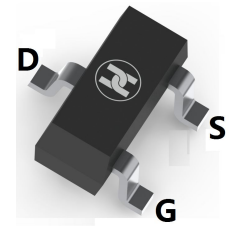
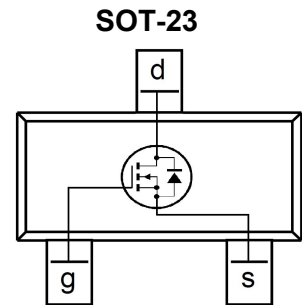


**MOSFET (N-CHANNEL)**
**FEATURES**

- $V_{DS}=60V$ ,  $I_D=2.7A$ ,  $R_{DS(ON)}<92m\Omega@V_{GS}=10V$
- Fast switching
- Ultra Low On-Resistance
- Surface Mount device


**MECHANICAL DATA**

- Case: SOT-23
- Case Material: Molded Plastic. UL flammability
- Classification Rating: 94V-0
- Weight: 0.008 grams (approximate)


**MAXIMUM RATINGS ( $T_A = 25^\circ C$  unless otherwise noted)**

Parameter	Symbol	Value	Unit
Drain-source voltage	$V_{DS}$	60	V
Gate-source voltage	$V_{GS}$	$\pm 16$	V
Continuous drain current	$I_D$	$T_A=25^\circ C$	2.7
		$T_A=70^\circ C$	2.1
Pulsed drain current (Note 1)	$I_{DM}$	11	A
Power dissipation	$P_D$	$T_A=25^\circ C$	1.25
		$T_A=70^\circ C$	0.8
Linear Derating Factor		0.01	W/ $^\circ C$
Thermal resistance from Junction to ambient	$R_{\theta JA}^*$	100	$^\circ C/W$
Storage and Junction temperature	$T_J, T_{STG}$	-55 ~ +150	$^\circ C$

\*Surface mounted on 1 in square Cu board

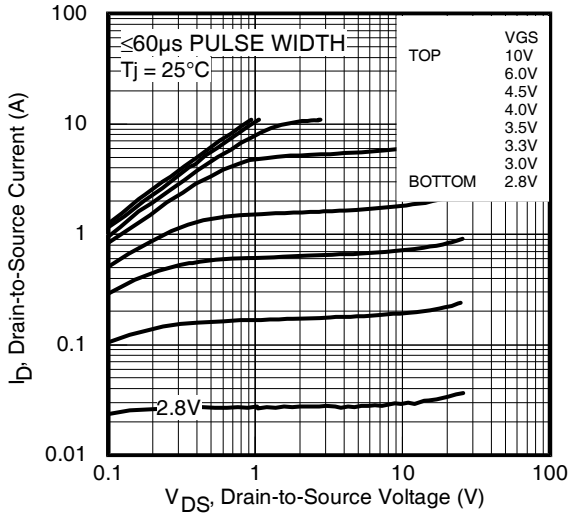
**ELECTRICAL CHARACTERISTICS ( $T_A = 25^\circ C$  unless otherwise specified)**

Parameter	Symbol	Min	Typ	Max	Unit	Conditions
Drain-Source breakdown voltage	$V_{(BR)DSS}$	60			V	$V_{GS}=0V, I_D=250\mu A$
Zero gate voltage drain current	$I_{DSS}$			20	$\mu A$	$V_{DS}=60V, V_{GS}=0V$
				250		$V_{DS}=60V, V_{GS}=0V, T_J=125^\circ C$
Gate-body leakage current	$I_{GSS}$			$\pm 100$	nA	$V_{DS}=0V, V_{GS}=\pm 16V$
Gate-threshold voltage (note 1)	$V_{GS(th)}$	0.8		1.8	V	$V_{DS}=V_{GS}, I_D=250\mu A$
Drain-source on-resistance(note 1)	$R_{DS(ON)}$		98	116	$m\Omega$	$V_{GS}=4.5V, I_D=2.2A$
			78	92	$m\Omega$	$V_{GS}=10V, I_D=2.7A$
Internal Gate Resistance	$R_G$		1.6		$\Omega$	
Forward transconductance(note 1)	$g_{FS}$		7.6		S	$V_{DS}=15V, I_D=2.0A$
Input capacitance	$C_{iss}$		290		pF	$V_{DS}=25V, V_{GS}=0V, f=1MHz$
Output capacitance	$C_{oss}$		37		pF	
Reverse transfer capacitance	$C_{rss}$		21		pF	
Turn-on delay time	$t_{d(on)}$		5.4		nS	
Turn-on rise time	$t_r$		6.3		nS	$V_{DD}=30V, I_D=1A, R_G=6.8\Omega, V_{GS}=4.5V$
Turn-off delay time	$t_{d(off)}$		6.8		nS	
Turn-off fall time	$t_f$		4.2		nS	
Total gate charge	$Q_g$		2.5		nC	$V_{DS}=30V, V_{GS}=4.5V, I_D=2.7A$
Gate-source charge	$Q_{gs}$		0.7		nC	
Gate-drain charge	$Q_{gd}$		1.3		nC	
Diode forward current(Body Diode)	$I_S$			1.6	A	$I_S=2.7A, V_{GS}=0V, T_J=25^\circ C$
Pulsed Source Current(Body Diode)	$I_{SM}$			11	A	
Diode forward voltage (note 1)	$V_{SD}$			1.3	V	$T_J=25^\circ C, V_R=30V, I_F=1.6A, di/dt=100A/\mu s$
Reverse Recovery Time	$t_{rr}$		14	21	nS	
Reverse Recovery Charge	$Q_{rr}$		13	20	nC	

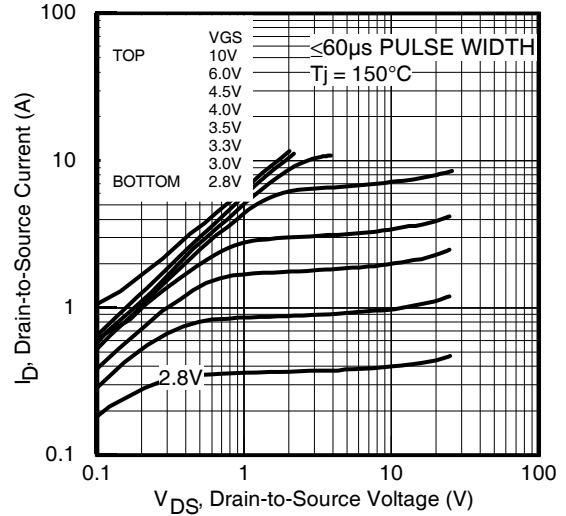
Note:1. Pulse test ; Pulse width  $\leq 400\mu s$ , Duty cycle  $\leq 2\%$  .

**MOSFET (N-CHANNEL)**

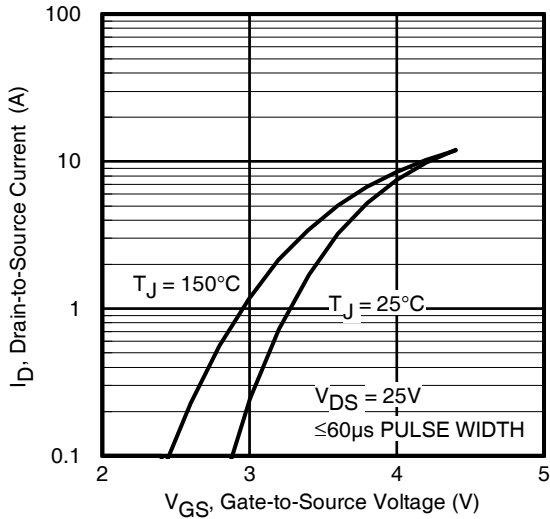
**Typical Characteristics**



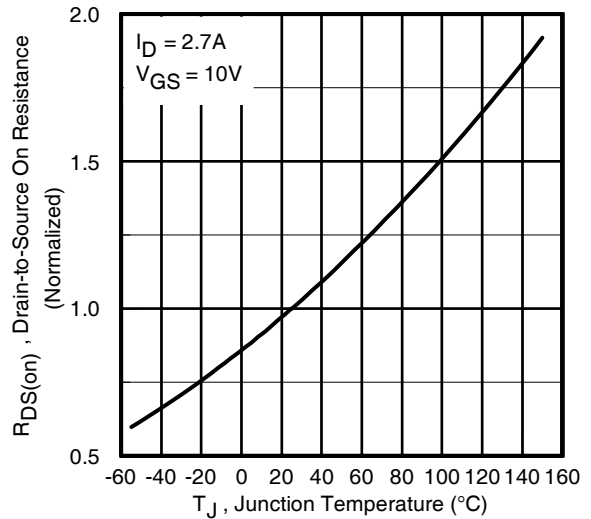
**Fig 1. Typical Output Characteristics**



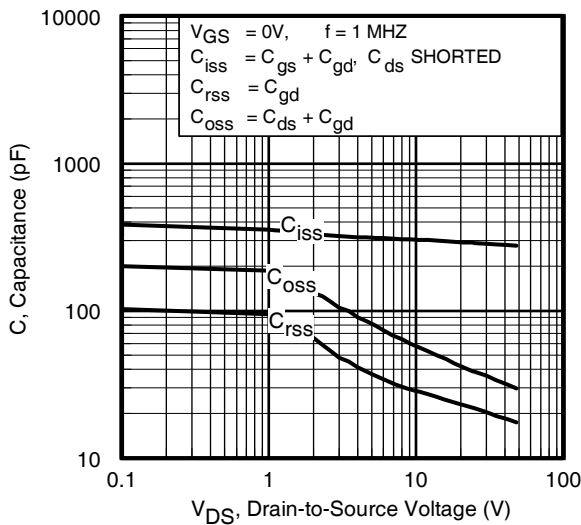
**Fig 2. Typical Output Characteristics**



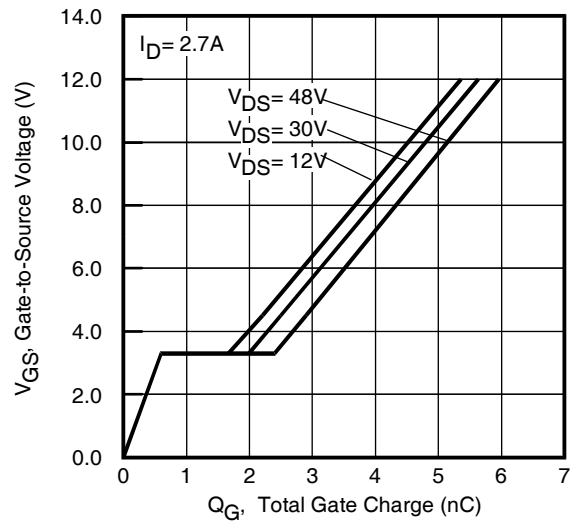
**Fig 3. Typical Transfer Characteristics**



**Fig 4. Normalized On-Resistance vs. Temperature**

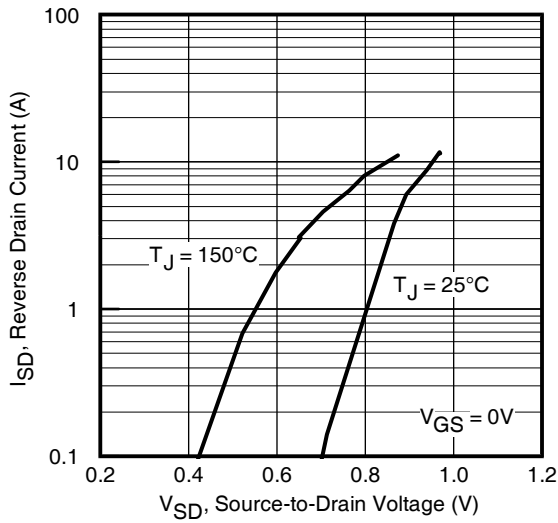


**Fig 5. Typical Capacitance vs. Drain-to-Source Voltage**

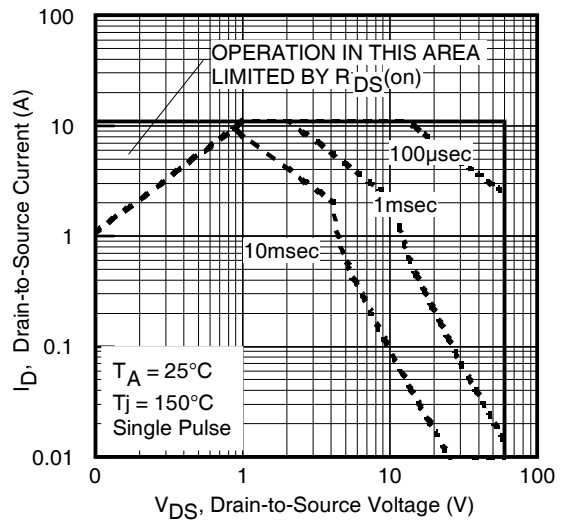


**Fig 6. Typical Gate Charge vs. Gate-to-Source Voltage**

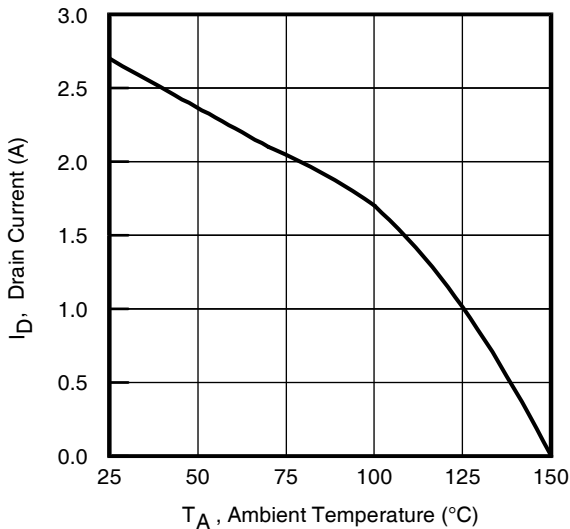
**MOSFET (N-CHANNEL)**



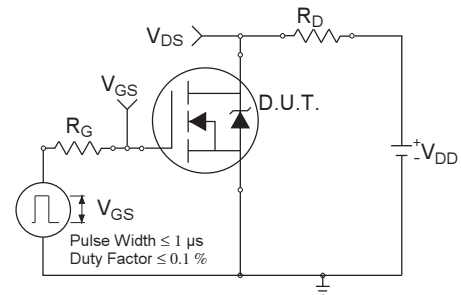
**Fig 7. Typical Source-Drain Diode Forward Voltage**



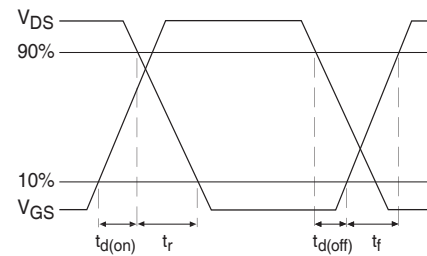
**Fig 8. Maximum Safe Operating Area**



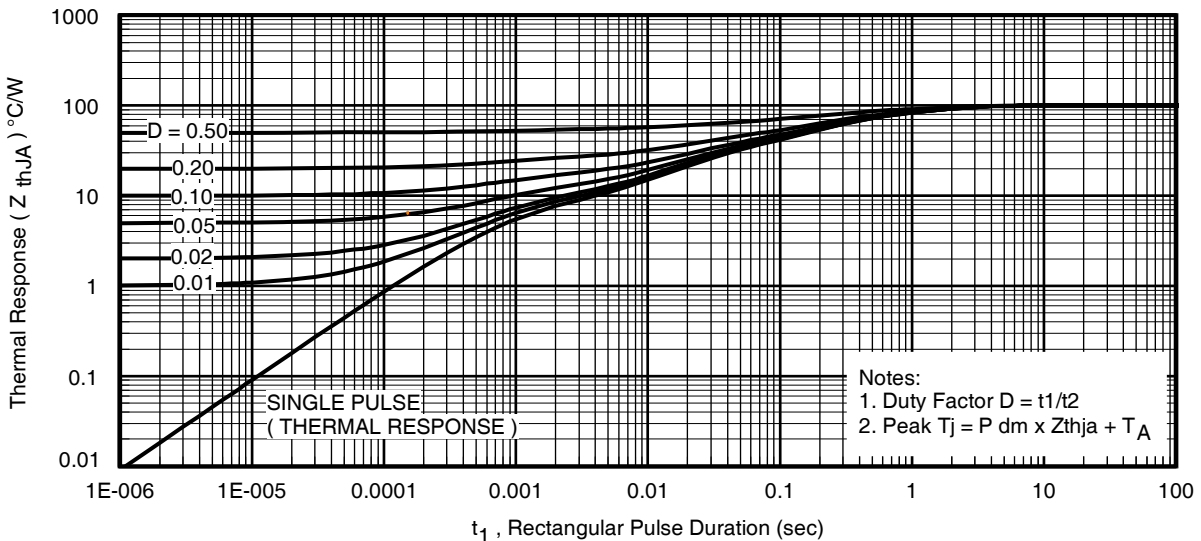
**Fig 9. Maximum Drain Current vs. Ambient Temperature**



**Fig 10a. Switching Time Test Circuit**

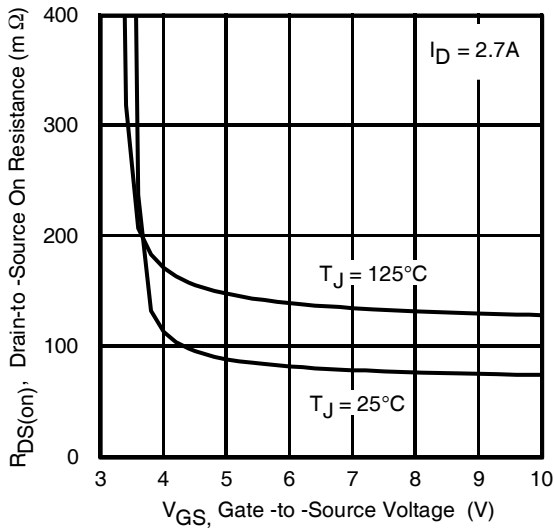


**Fig 10b. Switching Time Waveforms**

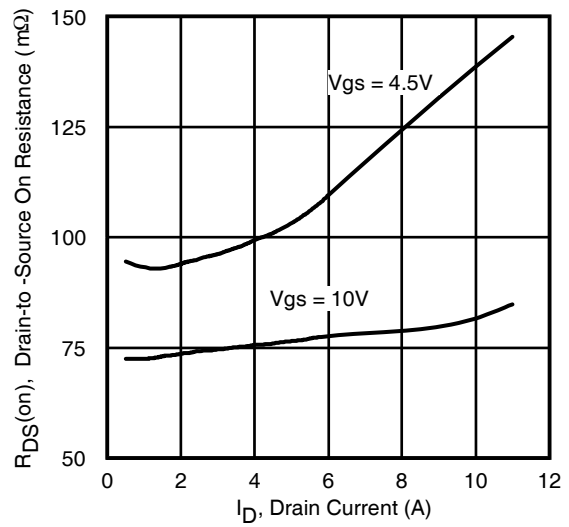


**Fig 11. Typical Effective Transient Thermal Impedance, Junction-to-Ambient**

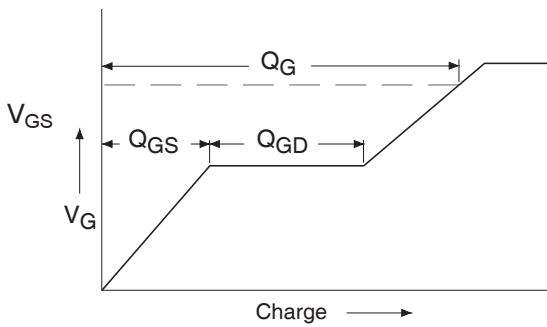
**MOSFET (N-CHANNEL)**



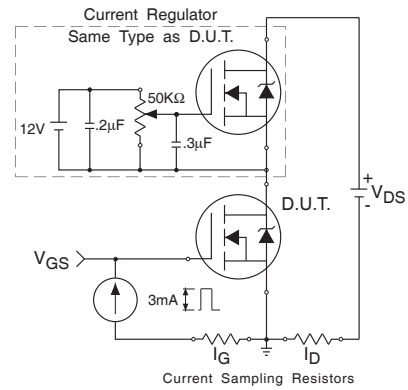
**Fig 12.** Typical On-Resistance vs. Gate Voltage



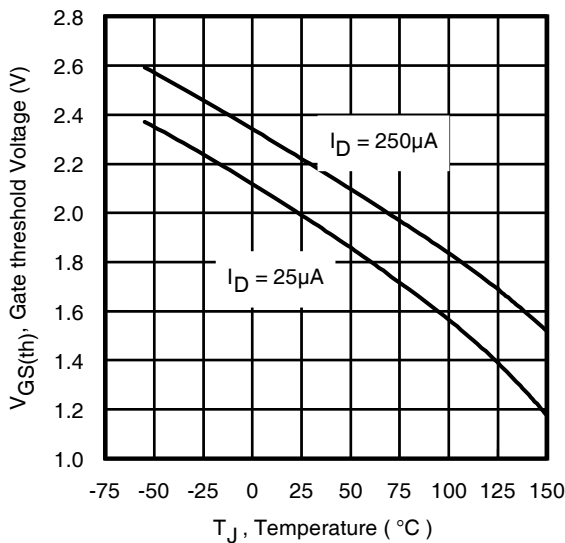
**Fig 13.** Typical On-Resistance vs. Drain Current



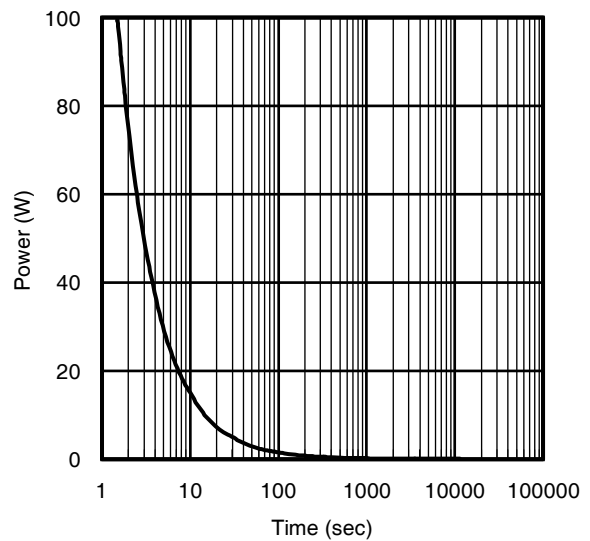
**Fig 14a.** Basic Gate Charge Waveform



**Fig 14b.** Gate Charge Test Circuit



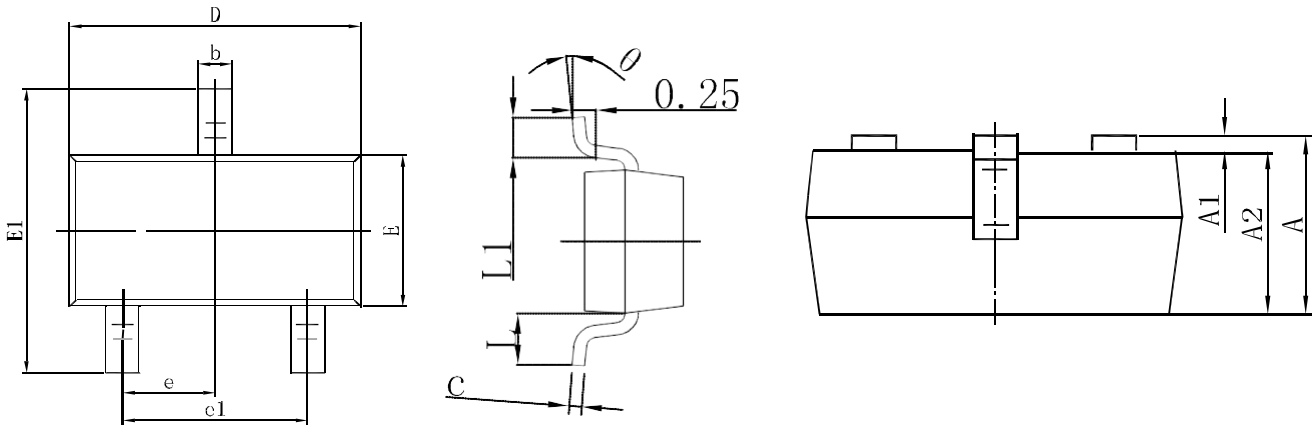
**Fig 15.** Typical Threshold Voltage vs. Junction Temperature



**Fig 16.** Typical Power vs. Time

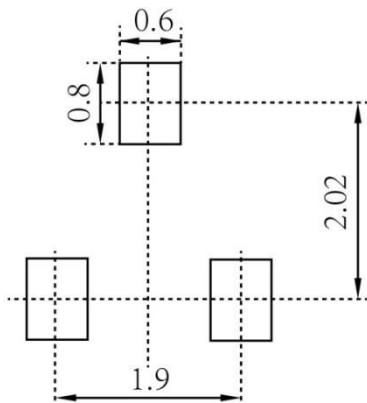
MOSFET (N-CHANNEL)

SOT-23 Package Outline Dimensions



Symbol	Dimensions In Millimeters		Dimensions In Inches	
	Min.	Max.	Min.	Max.
A	0.900	1.150	0.035	0.045
A1	0.000	0.100	0.000	0.004
A2	0.900	1.050	0.035	0.041
b	0.300	0.500	0.012	0.020
c	0.080	0.150	0.003	0.006
D	2.800	3.000	0.110	0.118
E	1.200	1.400	0.047	0.055
E1	2.250	2.550	0.089	0.100
e	0.950 TYP		0.037 TYP	
e1	1.800	2.000	0.071	0.079
L	0.550 REF		0.022 REF	
L1	0.300	0.500	0.012	0.020
θ	0°	8°	0°	8°

SOT-23 Suggested Pad Layout



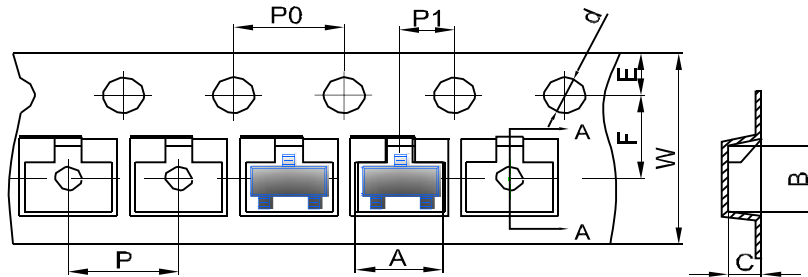
**Note:**

1. Controlling dimension: in millimeters
2. General tolerance: ±0.05mm
3. The pad layout is for reference purposes only

MOSFET (N-CHANNEL)

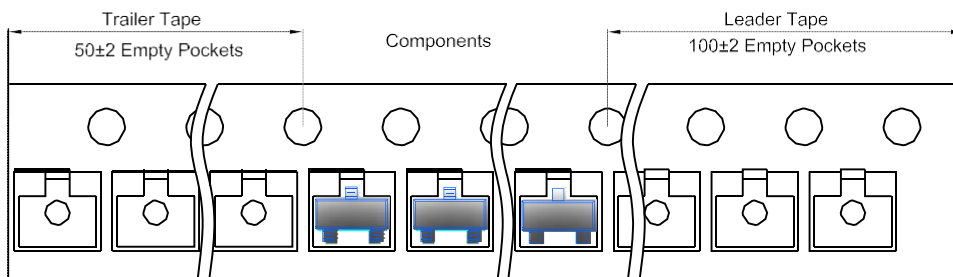
SOT-23 Tape and Reel

SOT-23 Embossed Carrier Tape

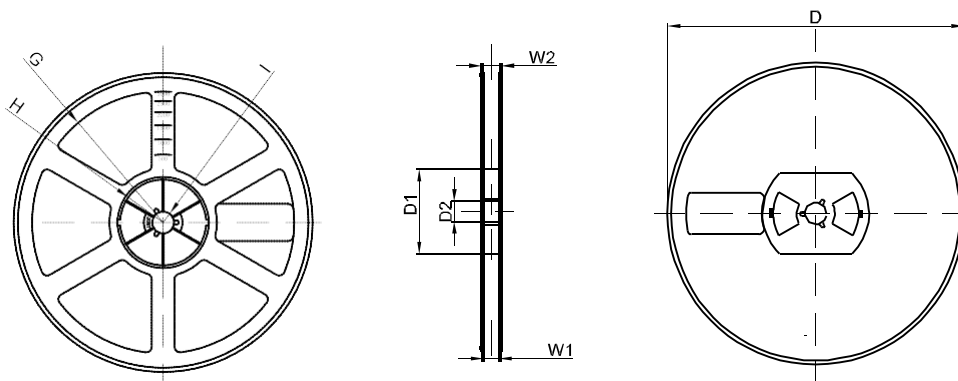


DIMENSIONS ARE IN MILLIMETER										
TYPE	A	B	C	d	E	F	P0	P	P1	W
SOT-23	3.15	2.77	1.22	Ø1.50	1.75	3.50	4.00	4.00	2.00	8.00
TOLERANCE	±0.1	±0.1	±0.1	±0.1	±0.1	±0.1	±0.1	±0.1	±0.1	±0.1

SOT-23 Tape Leader and Trailer



SOT-23 Reel



DIMENSIONS ARE IN MILLIMETER								
REEL OPTION	D	D1	D2	G	H	I	W1	W2
7" DIA	Ø178	54.40	13.00	R78	R25.60	R6.50	9.50	12.30
TOLERANCE	±2	±1	±1	±1	±1	±1	±1	±1

## X-ON Electronics

Largest Supplier of Electrical and Electronic Components

*Click to view similar products for [MOSFET](#) category:*

*Click to view products by [Hottech](#) manufacturer:*

Other Similar products are found below :

[IRFD120](#) [JANTX2N5237](#) [2SK2267\(Q\)](#) [BUK455-60A/B](#) [TK100A10N1,S4X\(S](#) [MIC4420CM-TR](#) [VN1206L](#) [NDP4060](#) [SI4482DY](#)  
[IRS2092STRPBF-EL](#) [IPS70R2K0CEAKMA1](#) [TK31J60W5,S1VQ\(O](#) [TK31J60W,S1VQ\(O](#) [TK16J60W,S1VQ\(O](#) [2SK2614\(TE16L1,Q\)](#)  
[DMN1017UCP3-7](#) [EFC2J004NUZTDG](#) [P85W28HP2F-7071](#) [NTE2384](#) [DMC2700UDMQ-7](#) [DMN2080UCB4-7](#) [DMN61D9UWQ-13](#)  
[US6M2GTR](#) [DMN31D5UDJ-7](#) [DMP22D4UFO-7B](#) [IPS60R3K4CEAKMA1](#) [DMN1006UCA6-7](#) [DMN16M9UCA6-7](#) [STF5N65M6](#)  
[IRF40H233XTMA1](#) [STU5N65M6](#) [DMN6022SSD-13](#) [DMN13M9UCA6-7](#) [DMTH10H4M6SPS-13](#) [IPS60R360PFD7SAKMA1](#)  
[DMN2990UFB-7B](#) [SSM3K35CT,L3F](#) [IPLK60R1K0PFD7ATMA1](#) [2N7002W-G](#) [MCAC30N06Y-TP](#) [IPWS65R035CFD7AXKSA1](#)  
[MCQ7328-TP](#) [SSM3J143TU,LXHF](#) [DMN12M3UCA6-7](#) [PJMF280N65E1\\_T0\\_00201](#) [PJMF380N65E1\\_T0\\_00201](#)  
[PJMF280N60E1\\_T0\\_00201](#) [PJMF600N65E1\\_T0\\_00201](#) [PJMF900N65E1\\_T0\\_00201](#) [PJMF900N60E1\\_T0\\_00201](#)