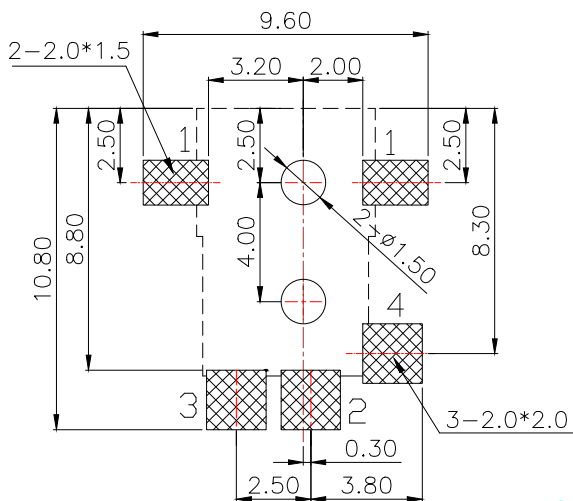
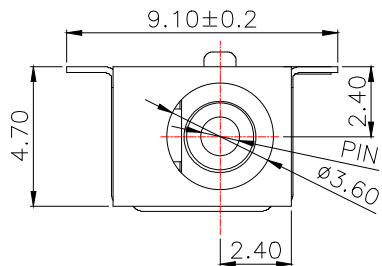
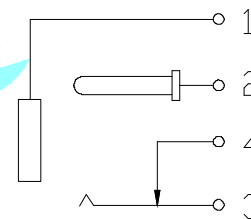
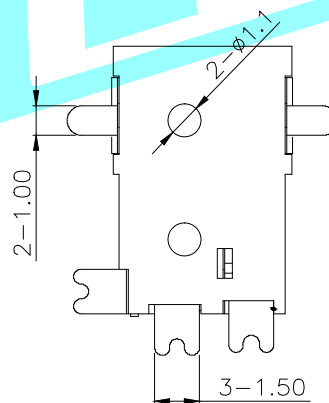
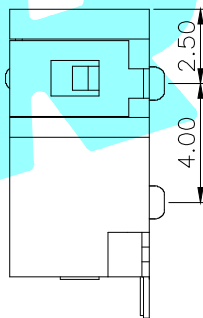
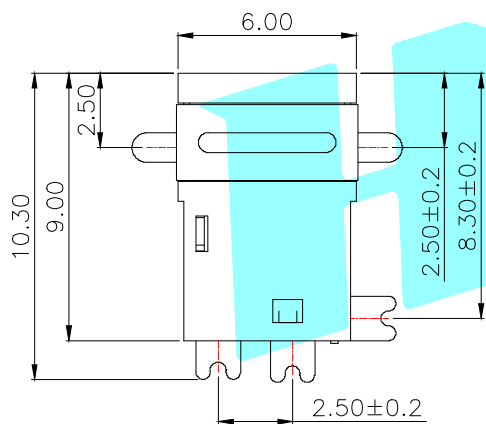


ROHS



| | | |
|-----------|------|------|
| Model No. | 1 | 2 |
| PIN | φ1.0 | φ1.3 |

P.C.B LAYOUT(Top view)



CIRCUIT DIAGRAM

Rating:0.5A 30V DC
 Contact Resistance:30 mΩ Max.
 Operating temperature:-30℃~70℃
 Operating force:3-20N
 Operating Life:5,000cycles

| | | | | | | |
|------|-----------|---------|-------|------------|-----------|--------|
| ② | Terminal | 5 | Brass | Ag Plating | | |
| ① | Housing | 1 | PPA | Black | | |
| ITEM | PART NAME | TER'NO. | QTY. | MATERIAL | FINISHING | REMARK |

| | | | | | | | | | |
|-----------|--------|-----------|--------------|-------------------------|---|-----------|-------------|--------------|--------------|
| APPROVALS | | DATE | | ELECTRONICS CO.,LTD | | | | | |
| DRAWN | LIUCAN | 2021.6.23 | | | | | TITLE: | PHONE JACKES | |
| CHECKED | | | | | | | PART NO. | DC-045B | |
| APPROVALS | | | | TOLERANCES ARE | 30~以上 ±0.30 10~30 ±0.20 5~10 ±0.15 ~ 5 ±0.10 | ANGLE ±2' | UNIT: mm | SCALE: 1:1 | PROJ: |
| ECN NO. | REV. | DATE. | DESCRIPTION. | CHANGE. | CHECK. | APPRO. | DRAWING NO. | | SHEET 1 OF 1 |

| | | | | | | |
|---------|------|-------|--------------|---------|--------|--------|
| _____ | A | _____ | NEW | _____ | _____ | _____ |
| ECN NO. | REV. | DATE. | DESCRIPTION. | CHANGE. | CHECK. | APPRO. |

X-ON Electronics

Largest Supplier of Electrical and Electronic Components

Click to view similar products for [DC Power Connectors](#) category:

Click to view products by [HRO parts](#) manufacturer:

Other Similar products are found below :

[B04P-VL-VN-1.8](#) [1600206-1](#) [163-0308-EX](#) [163-4012-EX](#) [163-4117-EX](#) [163-7421](#) [163-MJ22-EX](#) [171-0721-EX](#) [KLDX-SMT-0202-BPTR](#)
[163-0179-EX](#) [163-1000-EX](#) [163-4007-EX](#) [163-4015-EX](#) [171-0722-E](#) [171-7391](#) [K596](#) [KLD-0201-BC](#) [KPPX-D](#) [4C6831AX](#) [TS3PNJ](#)
[E16550-0008](#) [VLP-08V-1](#) [VLP-12V-1](#) [VLS-01V](#) [DC PLUG-P1M-P1MR](#) [09442](#) [AS120-M](#) [09760](#) [CP30240](#) [TAMIYA-M](#) [TAMIYA-MT1](#)
[TAMIYA-MT2](#) [4840.1200](#) [4840.2202](#) [C5080HI-04P-18 + C5080HI-C](#) [JC-138](#) [JC-210](#) [JPO-25 \(FC6814\)](#) [JYO-26 \(FC6811\)](#) [JYO-29](#)
[\(FC68102\)](#) [KLBPS 3](#) [KLS 10 SCHWARZ](#) [KLS 40 SCHWARZ](#) [KPJXHT-4S](#) [DC-10A FC68148](#) [DC-10B \(FC68149\)](#) [WKLS 2](#) [WKLS 40](#)
[FA67555](#) [XNES/J 210 SCHWARZ](#) [XNES/J 250 SCHWARZ](#)