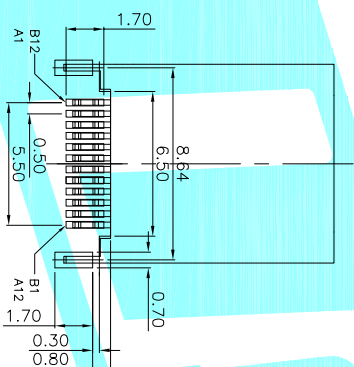
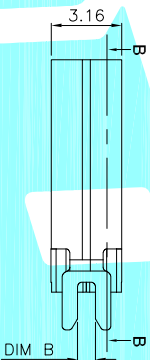
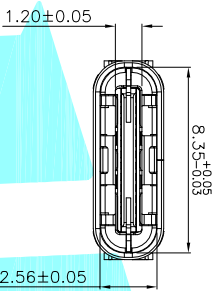
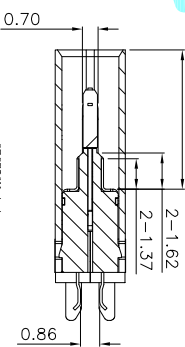
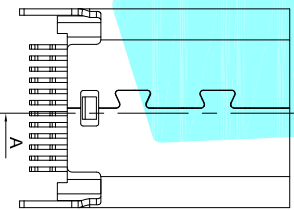


SECTION B-B
SCALE 1:1



RECOMMENDED P.C.B. LAYOUT (T:1.00mm)
TOLERANCE UNSPECIFIED ±0.05mm



SECTION A-A
SCALE 1:1

A	B
1 GND	12 GND
2 TX1+	11 RX1+
3 TX1-	10 RX1-
4 VBUS	9 VBUS
5 CC1	8 SBU2
6 D+	7 D-
7 D-	6 D+
8 SBU1	5 CC2
9 VBUS	4 VBUS
10 RX2-	3 TX2-
11 RX2+	2 TX2+
12 GND	1 GND

PART NO	DIM A	DIM B	DIM C	DIM D
TYPE-C-31-M-21	10.5	0.8	6.25	12.15
	10.5	1.0	6.25	12.15
	10.5	1.2	6.25	12.15
	9.3	0.8	5.10	11.05
TYPE-C-31-M-20	9.3	1.0	5.10	11.05
	9.3	1.2	5.10	11.05

- 备注:
- 1.材料:
 - 1-1. 胶料: LCP+30%GF; UL94V-0; 颜色: 黑色.
 - 1-2. 端子: C7025-TM02,T=0.12mm; 镀层:50u"MIN. 接触区镀金+u"MIN; 焊接区镀金 1u"MIN.
 - 1-3. 中铜片: SUS301-1/2H,T=0.20mm 清洗.
 - 1-4. EMI: SUS301-H T=0.1 清洗.
 - 1-5. 外壳: SUS304-1/2H T=0.30 镀镍.
 - 2.电气特性:
 - 2-1. 电压及额定电流: DC 30V MAX.&3A
 - 2-2. 接触阻抗: 40mΩ MAX.
 - 2-3. 绝缘阻抗: 100MΩ MIN.
 - 2-4. 耐电压: 100V AC FOR 1 MINUTE.
 - 2-5. 操作温度: -30C~+80C
 - 3.机械特性:
 - 3-1. 插入力: 5-20N.
 - 3-2. 拔出力: 8-20N.
 - 3-3. 耐久: 10000次

ITEM	PART NAME	TER'NO.	QTY.	MATERIAL	FINISHING
③	Shell	---	1	SUS	Ni Plated
②	Contact	---	24	COPPER ALLOY	Au Plated
①	Housing	---	1	LCP	Black

APPROVALS
DRAWN: JIANKUN.LIU 2018.08.01
DATE: _____
TITLE: USB CONNECTOR
ELECTRONICS CO.,LTD

ECN NO.	REV.	DATE.	DESCRIPTION.	CHANGE.	CHECK.	APPRO.
---	A	---	NEW	---	---	---

APPROVALS	DATE	TITLE	PART NO.	SCALE	PROJ.
CHECKED	---	---	---	1:1	---
APPROVALS	---	---	---	---	---
TOLERANCES ARE	30~以上 ±0.30	ANGLE	UNIT: mm	SCALE: 1:1	PROJ. 1 OF 1
	10~30 ±0.25				
	5~10 ±0.20	±2'	DRAWING NO.		
	~5 ±0.15				

X-ON Electronics

Largest Supplier of Electrical and Electronic Components

Click to view similar products for [USB Connectors](#) category:

Click to view products by [HRO parts manufacturer](#):

Other Similar products are found below :

[10033527-N3112MLF](#) [17-210561](#) [GMCB05B11124H1EU](#) [17-200931](#) [65-647-8-BK-BU](#) [690-010-295-484](#) [73725-1191BLF](#) [950](#) [E8144-B01021-L](#) [A-USB A-LP-SMT-C](#) [A-USB B-TOP-C](#) [MUSBA511N5](#) [MUSBB15131](#) [MUSBC111M5](#) [MUSBD11135](#) [217450-1](#) [CA 6 W LD](#)
[896-30-004-00-000000](#) [KUSBVX-BS1N-W30](#) [KUSBX-AP-KIT-SCBLK](#) [KUSBX-AS2N-W](#) [KUSBX-SMT2AP1S-W](#) [KUSBX-SMTAS1NBTR](#) [KUSBX-SMTBS1NBTR](#) [30-498-6](#) [SK-60A-2](#) [17-200261](#) [17-210051](#) [1734082-1](#) [FK-37-32SL](#) [30-1574](#) [30-470](#) [30-489](#) [30-541](#) [30-572-3](#) [30-9503](#) [M9177/2-1](#) [MAB 5 S](#) [MIKROE-1451](#) [33UBBR-04SW11R](#) [USBFTV2PEM2G](#) [USBFTVC6ZN](#) [USBFTVSCCG](#)
[KUSBX-AS2N-W30](#) [KUSBX-SLAS1N-W](#) [KUSBX-SLAS1N-W30](#) [1-1734084-2](#) [E8110-001-01](#) [MUSBC11135](#) [NK-27-32SL](#)