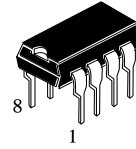


## Low-Power, Slew-Rate-Limited RS-485/RS-422 Transceivers

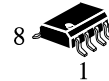
### Description

The HT6508 is low-power transceivers for RS-485 and RS-422 communication. IC contains one driver and one receiver. The driver slew rates of the HT6508 is not limited, allowing them to transmit up to 10Mbps.

These transceivers draw between 120 $\mu$ A and 500 $\mu$ A of supply current when unloaded or fully loaded with disabled drivers. All parts operate from a single 3.3V supply. Drivers are short-circuit current limited and are protected against excessive power dissipation by thermal shutdown circuitry that places the driver outputs into a high-impedance state. The receiver input has a fail-safe feature that guarantees a logic-high output if the input is open circuit.



DIP8-8 N SUFFIX  
HT6508ANZ



SOP-8 R SUFFIX  
HT6508ARZ



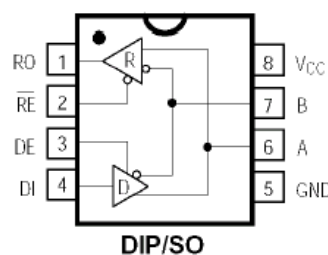
MSOP-8 M SUFFIX  
HT6508ARMZ

T<sub>A</sub> = -40° to 85°C for all packages.

### Features

- Low Quiescent Current: 120 $\mu$ A
- -7V to +12V Common-Mode Input Voltage Range
- Three-State Outputs
- 80ns Propagation Delays, 5ns Skew
- Half-Duplex Versions Available
- Operate from a Single 3.3V Supply
- Allows up to 32 Transceivers on the Bus
- Data rate: 10 Mbps
- Current-Limiting and Thermal Shutdown for Driver Overload Protection
- Enhanced ESD Specifications:
  - ±15kV IEC61000-4-2 Air Discharge
  - ±8kV IEC61000-4-2 Contact Discharge

### Pin Description



**ABSOLUTE MAXIMUM RATINGS**

|   |   |
|---|---|
| Supply Voltage ( $V_{CC}$ ) 7V                          | Continuous Power Dissipation ( $T_A = +70^\circ\text{C}$ )                            |
| Control Input Voltage -0.3V to 7V                       | 8-Pin Plastic DIP (derate 9.09mW/ $^\circ\text{C}$ above +70 $^\circ\text{C}$ ) 727mW |
| Driver Input Voltage (DI) -0.3V to 7V                   | 8-Pin SOP (derate 5.88mW/ $^\circ\text{C}$ above +70 $^\circ\text{C}$ ) 471mW         |
| Driver Output Voltage (A, B) -7.5V to +12.5V            | Operating Temperature Ranges -40 $^\circ\text{C}$ to +85 $^\circ\text{C}$             |
| Receiver Input Voltage (A, B) -7.5V to +12.5V           | Storage Temperature Range -65 $^\circ\text{C}$ to +160 $^\circ\text{C}$               |
| Receiver Output Voltage (RO) -0.3V to ( $V_{CC}+0.3V$ ) | Lead Temperature (soldering, 10sec) +300 $^\circ\text{C}$                             |

\* Stresses beyond those listed under "absolute maximum ratings" may cause permanent damage to the device. These are stress ratings only and functional operation of the device at these or any other conditions beyond those indicated under "recommended operating conditions" is not implied. Exposure to absolute-maximum-rated conditions for extended periods may affect device reliability.

**DC ELECTRICAL CHARACTERISTICS**

( $V_{CC} = 3.3V \pm 0.3V$ ,  $T_A = T_{MIN}$  to  $T_{MAX}$ , unless otherwise noted.) (Notes 1, 2)

| PARAMETER   | SYMBOL          | CONDITIONS                                      | MIN            | TYP | MAX     | UNITS         |
|---|-----------------|---|----------------|-----|---------|---------------|
| Differential Driver Output (no load)  | $V_{OD1}$       |   |                |     | 3       | V             |
| Differential Driver Output (with load)  | $V_{OD2}$       | R = 100 $\Omega$ (RS-422)                       | 1              |     |         | V             |
|   |                 | R = 54 $\Omega$ (RS-485), Figure 4              | 0.8            |     |         |               |
| Change in Magnitude of Driver Differential Output Voltage for Complementary Output States | $\Delta V_{OD}$ | R = 54 $\Omega$ or 50 $\Omega$ , Figure 4       |                |     | 0.2     | V             |
| Driver Common-Mode Output Voltage   | $V_{OC}$        | R = 54 $\Omega$ or 100 $\Omega$ , Figure 4      |                |     | 2       | V             |
| Change in Magnitude of Driver Common-Mode Output Voltage for Complementary Output States  | $\Delta V_{OC}$ | R = 54 $\Omega$ or 100 $\Omega$ , Figure 4      |                |     | 0.2     | V             |
| Input High Voltage  | $V_{IH}$        | DE, DI, RE                                      | 2.0            |     |         | V             |
| Input Low Voltage   | $V_{IL}$        | DE, DI, RE                                      |                |     | 0.8     | V             |
| Input Current   | $I_{IN1}$       | DE, DI, RE                                      |                |     | $\pm 2$ | $\mu\text{A}$ |
| Input Current (A, B)  | $I_{IN2}$       | DE = 0V;<br>$V_{CC} = 0V$ or 3.35V              | $V_{IN} = 12V$ |     | 1.0     | mA            |
|   |                 |   | $V_{IN} = -7V$ |     | -0.8    |               |
| Receiver Differential Threshold Voltage   | $V_{TH}$        | $-7V \leq V_{CM} \leq 12V$                      | -0.2           |     | 0.2     | V             |
| Receiver Input Hysteresis   | $\Delta V_{TH}$ | $V_{CM} = 0V$                                   |                | 70  |         | mV            |
| Receiver Output High Voltage  | $V_{OH}$        | $I_o = -1.5\text{mA}$ , $V_{ID} = 200\text{mV}$ | 2.5            |     |         | V             |
| Receiver Output Low Voltage   | $V_{OL}$        | $I_o = 2.5\text{mA}$ , $V_{ID} = -200\text{mV}$ |                |     | 0.4     | V             |
| Three-State (high impedance) Output Current at Receiver                                   | $I_{OZR}$       | $0.4V \leq V_o \leq 2.4V$                       |                |     | $\pm 1$ | $\mu\text{A}$ |
| Receiver Input Resistance   | $R_{IN}$        | $-7V \leq V_{CM} \leq 12V$                      | 12             |     |         | k $\Omega$    |

**DC ELECTRICAL CHARACTERISTICS (continued)**

 ( $V_{CC} = 3.3V \pm 0.3V$ ,  $T_A = T_{MIN}$  to  $T_{MAX}$ , unless otherwise noted.) (Notes 1, 2)

| PARAMETER  | SYMBOL     | CONDITIONS  | MIN       | TYP      | MAX | UNITS   |
|--|------------|---|-----------|----------|-----|---------|
| No-Load Supply Current<br>(Note 3)                   | $I_{CC}$   | $DE = V_{CC}$                                     |           | 500      | 800 | $\mu A$ |
|  |            | $\overline{RE} = 0V$ or $V_{CC}$                  |           | 300      | 400 |         |
|  |            | $DE = 0V$   |           |          |     |         |
| Driver Short-Circuit Current,                        | $I_{OSD1}$ | $-7V \leq V_O \leq 12V$ (Note 4)                  |           |          | 250 | mA      |
| $V_O = \text{High}$<br>Driver Short-Circuit Current  | $I_{OSD2}$ | $-7V \leq V_O \leq 12V$ (Note 4)                  |           |          | 250 | mA      |
| $V_O = \text{Low}$<br>Receiver Short-Circuit Current | $I_{OSR}$  | $0V \leq V_O \leq V_{CC}$                         | $\pm 6.5$ |          | 95  | mA      |
| ESD Protection                                       |            | A, B, Y and Z pins, tested using Human Body Model |           | $\pm 15$ |     | kV      |

**SWITCHING CHARACTERISTICS**

 ( $V_{CC} = 3.3V \pm 0.3V$ ,  $T_A = T_{MIN}$  to  $T_{MAX}$ , unless otherwise noted.) (Notes 1, 2)

| PARAMETER                           | SYMBOL     | CONDITIONS  | MIN | TYP | MAX | UNITS |
|-------------------------------------|------------|---|-----|-----|-----|-------|
| Driver Input to Output              | $t_{PLH}$  | $R_{DIFF} = 54\Omega$                             | 10  | 80  | 100 | ns    |
|                                     | $t_{PHL}$  | $C_{L1} = C_{L2} = 100pF$                         | 10  | 80  | 100 |       |
| Driver Output Skew to Output        | $t_{SKEW}$ | $R_{DIFF} = 54\Omega$ , $C_{L1} = C_{L2} = 100pF$ |     | 5   | 10  | ns    |
| Driver Enable to Output High        | $t_{ZH}$   | $C_L = 100pF$ , S2 closed                         |     | 55  | 80  | ns    |
| Driver Enable to Output Low         | $t_{ZL}$   | $C_L = 100pF$ , S1 closed                         |     | 55  | 80  | ns    |
| Driver Disable Time from Low        | $t_{LZ}$   | $C_L = 15pF$ , S1 closed                          |     | 60  | 90  | ns    |
| Driver Disable Time from High       | $t_{HZ}$   | $C_L = 15pF$ , S2 closed                          |     | 60  | 90  | ns    |
| $ t_{PLH} - t_{PHL} $ Differential  | $t_{SKD}$  | $R_{DIFF} = 54\Omega$                             |     | 13  | 20  | ns    |
| Receiver Input to Output            | $t_{PLH}$  | $R_{DIFF} = 54\Omega$                             | 20  | 120 | 200 | ns    |
|                                     | $t_{PHL}$  | $C_{L1} = C_{L2} = 100pF$                         | 20  | 120 | 200 |       |
| Receiver Skew $ t_{PLH} - t_{PHL} $ |            | $C_{L1} = C_{L2} = 100pF$                         |     | 5   | 10  |       |
| Receiver Enable to Output Low       | $t_{ZL}$   | $C_{RL} = 15pF$ , S1 closed                       |     | 50  | 90  | ns    |
| Receiver Enable to Output High      | $t_{ZH}$   | $C_{RL} = 15pF$ , S2 closed                       |     | 50  | 90  | ns    |
| Receiver Disable Time from Low      | $t_{LZ}$   | $C_{RL} = 15pF$ , S1 closed                       |     | 40  | 80  | ns    |
| Receiver Disable Time from High     | $t_{HZ}$   | $C_{RL} = 15pF$ , S2 closed                       |     | 40  | 80  | ns    |
| Maximum Data Rate                   | $f_{MAX}$  |   | 2.5 | 5   | 10  | Mbps  |

Note 1: All currents into device pins are positive; all currents out of device pins are negative. All voltages are referenced to device ground unless otherwise specified.

Note 2: All typical specifications are given for  $V_{CC}=3.3V$  and  $T_A=+25^\circ C$ .

Note 3: Supply current specification is valid for loaded transmitters when  $DE=0V$ .

Note 4: Applies to peak current.

TEST CIRCUITS

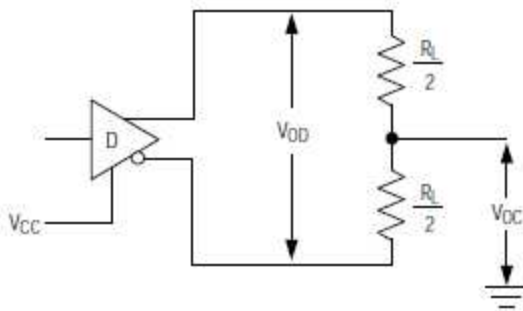


Figure 1. Driver  $V_{OD}$  and  $V_{CC}$

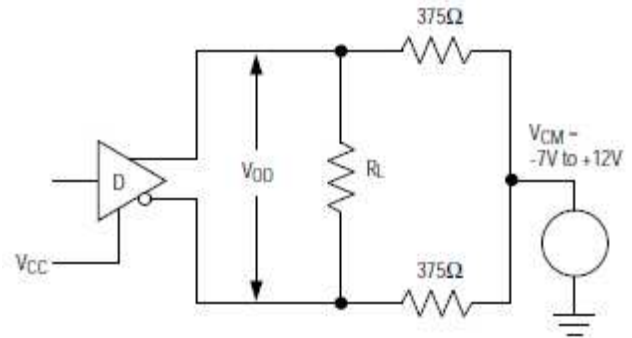


Figure 2. Driver  $V_{OD}$  with Varying Common-Mode Voltage

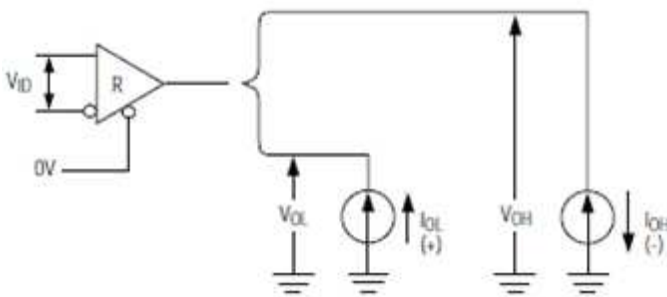


Figure 3. Receiver  $V_{OH}$  and  $V_{OL}$

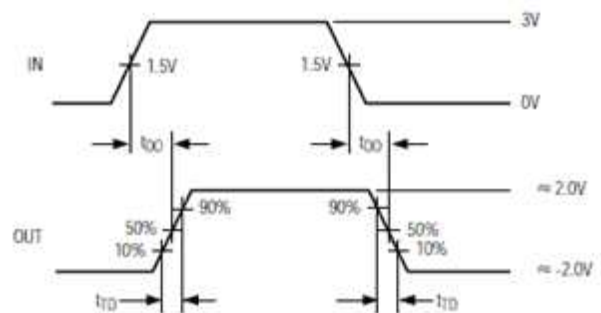
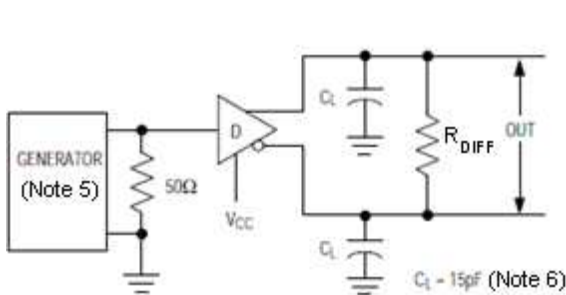


Figure 4. Driver Differential Output Delay and Transition Times

**TEST CIRCUITS (continue)**

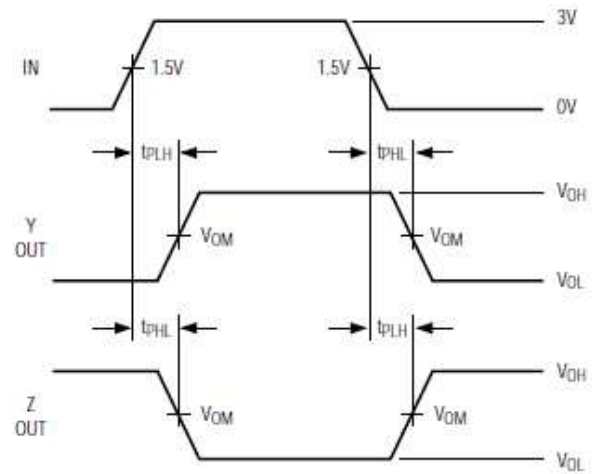
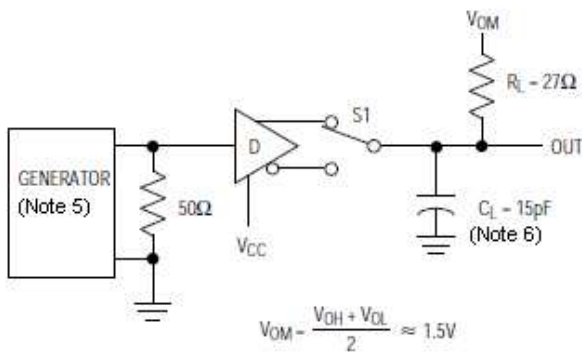


Figure 5. Driver Propagation Times

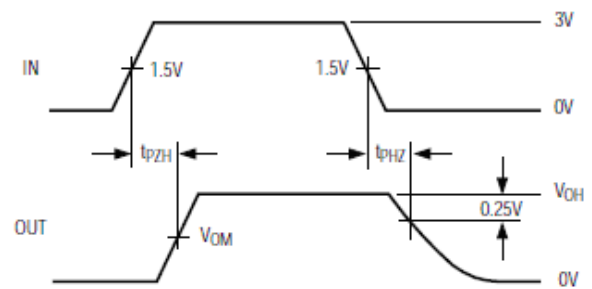
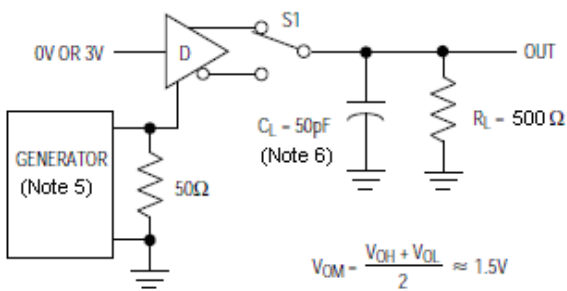


Figure 6. Driver Enable and Disable Times ( $t_{PZH}$ ,  $t_{PSH}$ ,  $t_{PHZ}$ )

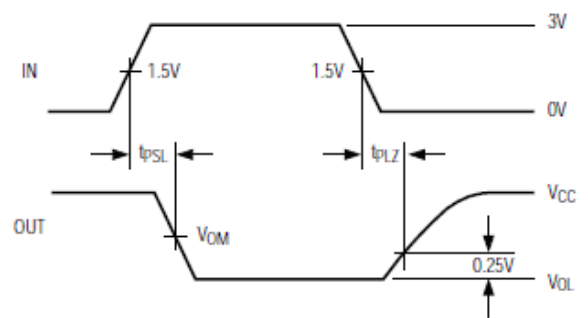
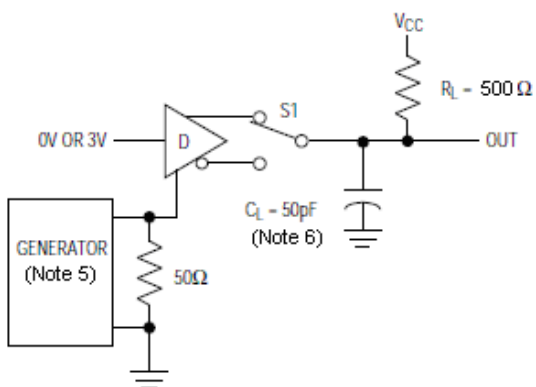


Figure 7. Driver Enable and Disable Times ( $t_{PZL}$ ,  $t_{PSL}$ ,  $t_{PLZ}$ )

**TEST CIRCUITS (continue)**

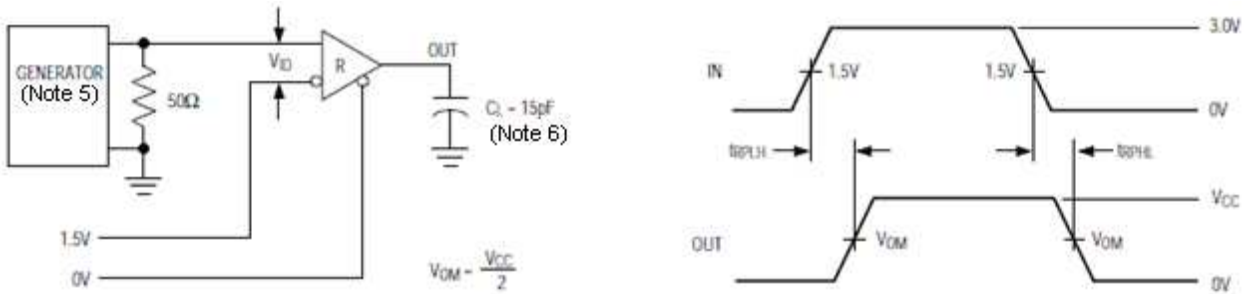


Figure 8. Receiver Propagation Delay

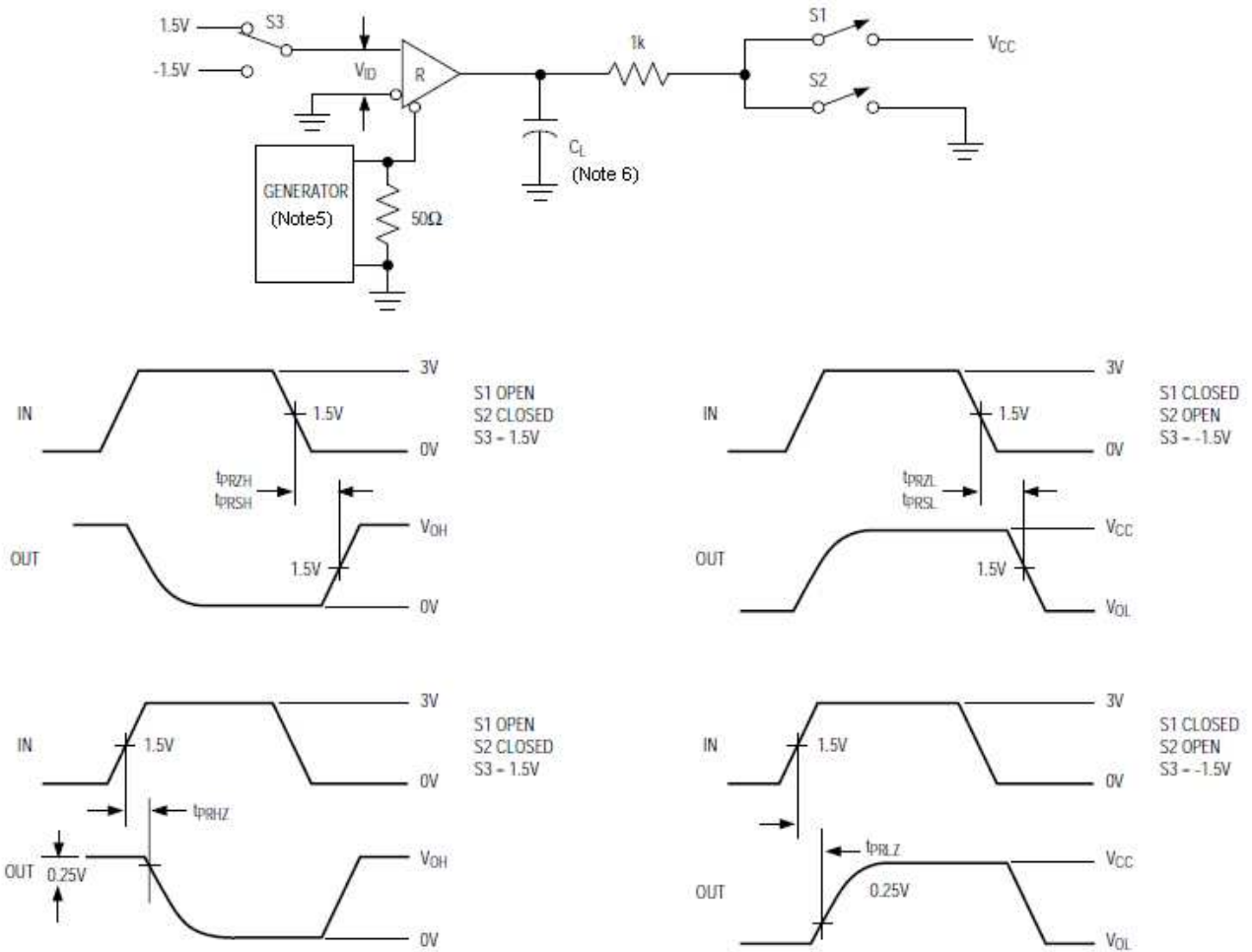


Figure 9. Receiver Enable and Disable Times

**Note 5:** The input pulse is supplied by a generator with the following characteristics: PRR = 250kHz, 50% duty cycle,  $t_r \leq 6.0\text{ns}$ ,  $Z_o = 50\Omega$ .

**Note 6:**  $C_L$  includes probe and stray capacitance.

**Function Tables**

| Transmitting |    |    |           |   |
|--------------|----|----|-----------|---|
| INPUTS       |    |    | OUTPUTS X |   |
| RE           | DE | DI | Z         | Y |
| X            | 1  | 1  | 0         | 1 |
| X            | 1  | 0  | 1         | 0 |
| 0            | 0  | X  | Z         | Z |
| 1            | 0  | X  | Z         | Z |

| Receiving |    |       |         |
|-----------|----|-------|---------|
| INPUTS    |    |       | OUTPUTS |
| RE        | DE | A-B   | RO      |
| 0         | 0  | +0.2V | 1       |
| 0         | 0  | -0.2V | 0       |
| 0         | 0  | open  | 1       |
| 1         | 0  | X     | Z       |

X-don't care  
 Z-high impedance

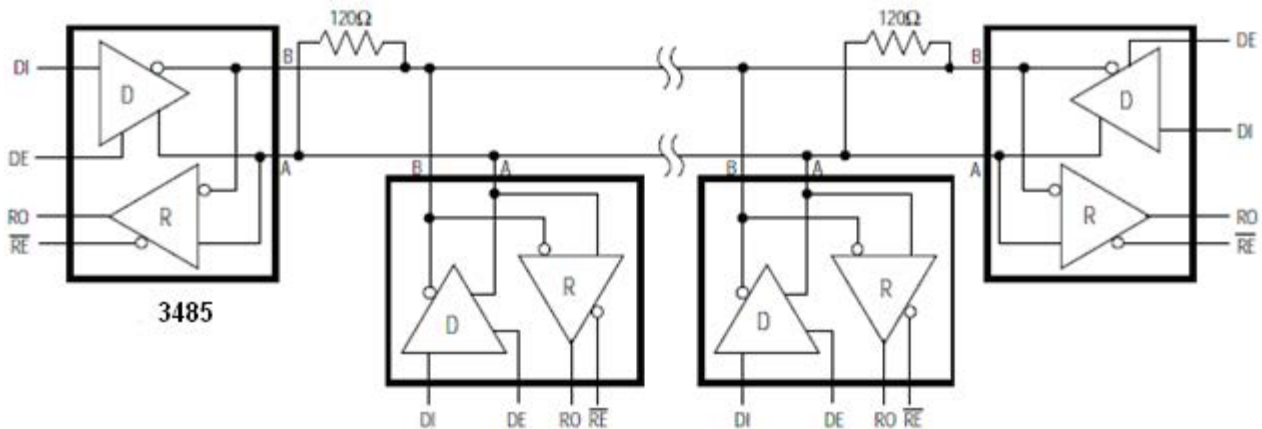
**Typical Information**


Figure 10. HT6508 Typical RS-485 Network

**Driver Output Protection**

Excessive output current and power dissipation caused by faults or by bus contention are prevented by two mechanisms. A foldback current limit on the output stage provides immediate protection against short circuits over the whole common-mode voltage range. In addition, a thermal shutdown circuit forces the driver outputs into a high-impedance state if the die temperature rises excessively.

**Propagation Delay**

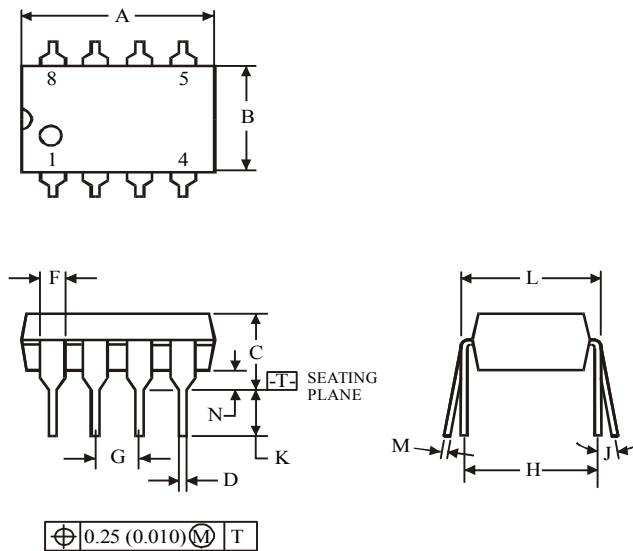
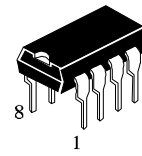
Skew time is simply the difference between the low-to-high and high-to-low propagation delay. Small driver/receiver skew times help maintain a symmetrical mark-space ratio (50% duty cycle).

The receiver skew time,  $|t_{PRLH} - t_{PRHL}|$ , is under 10ns. The driver skew times are 5ns for the HT6508.

**Typical Applications**

HT6508 transceivers are designed for bidirectional data communications on multipoint bus transmission lines. Figure 10 shows typical network applications circuits. These parts can also be used as line repeaters, with cable lengths longer than 4000 feet.

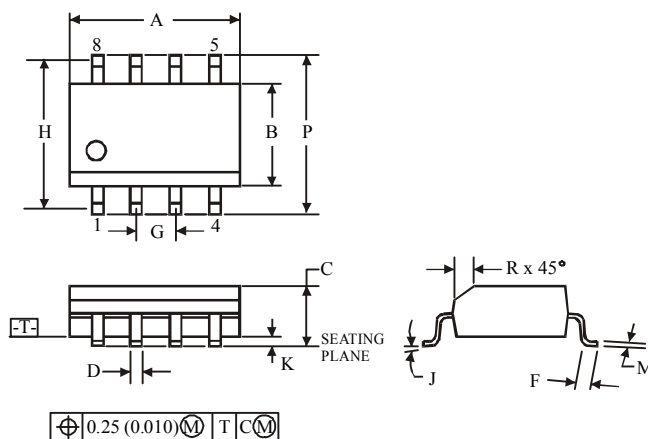
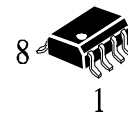
To minimize reflections, the line should be terminated at both ends in its characteristic impedance, and stub lengths off the main line should be kept as short as possible.

**(DIP8)**


| Symbol | Dimension, mm |       |
|--------|---------------|-------|
|        | MIN           | MAX   |
| A      | 8.51          | 10.16 |
| B      | 6.1           | 7.11  |
| C      |               | 5.33  |
| D      | 0.36          | 0.56  |
| F      | 1.14          | 1.78  |
| G      | 2.54          |       |
| H      | 7.62          |       |
| J      | 0°            | 10°   |
| K      | 2.92          | 3.81  |
| L      | 7.62          | 8.26  |
| M      | 0.2           | 0.36  |
| N      | 0.38          |       |

**NOTES:**

- Dimensions "A", "B" do not include mold flash or protrusions.  
Maximum mold flash or protrusions 0.25 mm (0.010) per side.

**(SOP8)**


| Symbol | Dimension, mm |      |
|--------|---------------|------|
|        | MIN           | MAX  |
| A      | 4.8           | 5    |
| B      | 3.8           | 4    |
| C      | 1.35          | 1.75 |
| D      | 0.33          | 0.51 |
| F      | 0.4           | 1.27 |
| G      | 1.27          |      |
| H      | 5.72          |      |
| J      | 0°            | 8°   |
| K      | 0.1           | 0.25 |
| M      | 0.19          | 0.25 |
| P      | 5.8           | 6.2  |
| R      | 0.25          | 0.5  |

**NOTES:**

- Dimensions A and B do not include mold flash or protrusion.
- Maximum mold flash or protrusion 0.15 mm (0.006) per side for A; for B - 0.25 mm (0.010) per side.



## X-ON Electronics

Largest Supplier of Electrical and Electronic Components

*Click to view similar products for [RS-422/RS-485 Interface IC category](#):*

*Click to view products by [HTCSEMI manufacturer](#):*

Other Similar products are found below :

[SP3494CN-L/TR](#) [CA-IS3082WX](#) [CA-IS3088WX](#) [CA-IS3092W](#) [XR33038IDTR-F](#) [SIT3485ISO](#) [XR3077XID-F](#) [ADM2687EBRIZ-RL7](#)  
[SP483EEN-L/TR](#) [SN75LBC175ADR](#) [SN65ALS1176DR](#) [MAX489CPD+](#) [MAX3080CPD+](#) [MXL1535EEWI+](#) [SP483EN-L/TR](#) [SP483CN-](#)  
[L/TR](#) [XR3072XID-F](#) [DS16F95J/883](#) [SP1485EEN-L/TR](#) [MAX490ESA+T](#) [ISL3179EIUZ-T7A](#) [ISL3179EIRZ-T7A](#) [ISL3179EFRZ-T7A](#)  
[XR33193ESBTR](#) [XR33194ESBTR](#) [XR3074XID-F](#) [XR3082XID-F](#) [SP3490EN-L](#) [ADM485JN](#) [ADM1485JNZ](#) [ADM2687EBRIZ](#)  
[ADM3491ARZ-REEL7](#) [ADM489ABRZ](#) [ADM3073EARZ](#) [ADM4850ACPZ-REEL7](#) [ADM4853ACPZ-REEL7](#) [ADM485ANZ](#)  
[ADM3072EARZ-REEL7](#) [ADM3075EARZ-REEL7](#) [ADM3486EARZ-REEL7](#) [ADM3493ARZ-REEL7](#) [ADM4856ARZ-REEL7](#)  
[ADM487EARZ-REEL7](#) [ADM1485JRZ-REEL](#) [ADM3490ARZ-REEL7](#) [ADM3490EARZ-REEL7](#) [ADM1485ARZ-REEL](#) [ADM3071EARZ](#)  
[ADM3483EARZ-REEL7](#) [ADM3485EARZ-REEL7](#)