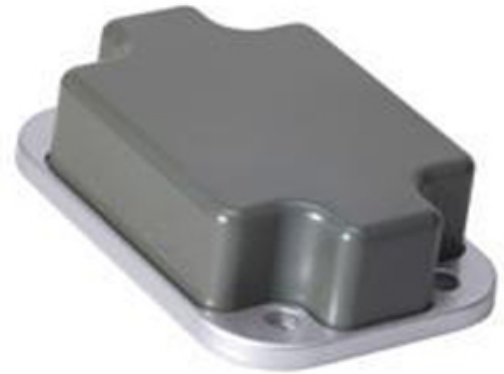


## SENCITY® Rail Low Profile Antenna 1399.99.0037

### Description

Railway rooftop antenna for 2G/3G/4G cellular and Wi-Fi 4/Wi-Fi 6 bands.  
Multiple Antenna installations support Cellular and Wi-Fi MIMO.  
Embedded GNSS antenna with integrated LNA.  
Supports GPS L1, Galileo E1, BeiDou B1 and GLONASS G1.  
Rugged design, meets EN 50155 railway standard.  
Fire retardant according to EN 45545-2.  
Extremely low profile (40mm).



### Product Configuration

#### Technical Data

##### Electrical Data

	Band 1	Band 2	Band 3	Band 4
Frequency (MHz)	790 - 806	806 - 870	870 - 960	1350 - 2700
VSWR	2.2	1.8	1.5	2
Impedance (Ohm)	50	50	50	50
Gain (dBi)	5	5	5	5
Composite power max (W)	80	80	80	80
Ambient temperature (°C)	25	25	25	25

	Band 5	Band 6
Band Name		GNSS
Frequency (MHz)	4900 - 6425	1559 - 1610
VSWR	2.1	1.8
Impedance (Ohm)	50	50
Gain (dBi)	8	
Composite power max (W)	80	
Ambient temperature (°C)	25	

##### Ports

	Port 1	Port 2
Connector	N, jack (female)	TNC, plug (male)
Polarization	vertical	circular right
DC grounded	Yes	Yes

##### Connections

	Band 1	Band 2	Band 3	Band 4	Band 5	Band 6
Port 1	X	X	X	X	X	
Port 2						X

##### General Data

Indicated VSWR values are valid for a metallic ground plane of 0.2 x 0.2m or larger. Indicated gain values will be achieved on a metallic ground plane of 1 x 1 m or larger.

##### Electrical Data LNA

LNA noise figure dB	1.8
LNA current consumption (mA)	30
LNA is connected to	Port 2

## SENCITY® Rail Low Profile Antenna 1399.99.0037

This Antenna is compliant with the Radio Equipment Directive 2014/53/EU

EMC: EN50121-3-2 (2016)

ETSI EN 303 413 V.1.1.1 (2017-06)

ETSI EN 301 489-1 V2.2.3 (2019-03)

ETSI EN 301 489-19 V2.1.1 (2019-04)

LNA input voltage range: 3...5V

Total gain @90° elevation: 30 dBiC

Values for LNA power consumption, noise figure and gain are given for a 5V operating voltage and may differ slightly for a lower voltage.

Antennas with production date prior to 01-Oct-2020 support only GPS bands between 1574.397 - 1576.443

MHz.

### Mechanical Data

Dimensions (mm)	40 x 100 x 145 (Height x Width x Depth)
Weight (kg)	0.535

High-voltage-protection: no voltage on RF port, if catenary line touches antenna (EN 50124-1, 24 kVAC/1min).

High-current-protection: Designed acc. to UIC 533, DC-grounded antenna element protection against lightning and short circuit with catenary lines (EN50388, EN 50122-1, 40kA/0.1sec)

Corrosion Low corrosion design acc. to MIL-F-14072(E).

Mounting Shall be installed in longitudinal position to the wind/driving direction.

Suitable for installation on high speed trains with a maximum speed of 500 km/hr.

4x composite sealing washers included for silicone-free sealing of the mounting screws.

### Environmental Data

Environmental conditions	outdoor
Operation temperature (°C)	-40 to 85
Storage temperature (°C)	-55 to 85
IP rating	IP69
Flammability rating	EN 45545-2
Solar radiation	DIN 75220
2011/65/EU (RoHS - including 2015/863 and 2017/2102)	compliant acc. Annex III
Lead-free soldered	yes
WEEE 2012/19/EU	no special marking needed
ELV 2000/53/EC	compliant
REACH 1907/2006/EC	compliant

Environmental tests: EN 50155:2007

Flammability rating: EN 45545-2.

### Material Data

Radome colour	RAL 7043 (dark grey)
Radome material	ASA (acrylic ester-styrene-acrylonitrile)
Back plate/base plate colour	grey
Back plate/base plate material	Aluminium
Plating	Passivated (Plating)

### Related Products

9090.99.0062 Sencity Rail Mounting plate xxxCustomer specificxxx

9091.99.0257 Sencity Rail - M10 sealing washer kit

### Related Documents

Mounting instruction	DOC-0000897030
Painting instruction	DOC-0000256180
Security instruction	DOC-0000278984
Outline drawing	DOU-00144558
3D-model	DOC-0000329807
CE compliancy	DOC-0000896953

### Additional Information

This product meets the Deutsche Bahn specifications for rolling stock equipment.

## SENCITY® Rail Low Profile Antenna 1399.99.0037

## X-ON Electronics

Largest Supplier of Electrical and Electronic Components

*Click to view similar products for [Antennas](#) category:*

*Click to view products by [Huber & Suhner](#) manufacturer:*

Other Similar products are found below :

[GAN30084EU](#) [930-033-R](#) [GW17.07.0250E](#) [1513563-1](#) [EXE902SM](#) [APAMPG-117](#) [MAF94383](#) [W3908B0100](#) [W6102B0100](#) [YE572113-30RSMM](#) [108-00014-50](#) [66089-2406](#) [SPDA17RP918](#) [A09-F8NF-M](#) [A09-F5NF-M](#) [RGFRA1903041A1T](#) [W3593B0100](#) [W3921B0100](#) [SIMNA-868](#) [SIMNA-915](#) [SIMNA-433](#) [W1044](#) [W1049B090](#) [A75-001](#) [WTL2449CQ1-FRSMM](#) [CPL9C](#) [EXB148BN](#) [0600-00060](#) [TRA9020S3PBN-001](#) [Y4503](#) [GD5W-28P-NF](#) [MA9-7N](#) [GD53-25](#) [GD5W-21P-NF](#) [C37](#) [MAF94051](#) [MA9-5N](#) [EXD420PL](#) [B1322NR](#) [QWFTB120](#) [MAF94271](#) [MAF94300](#) [GPSMB301](#) [FG4403](#) [AO-AGSM-OM54](#) [5200232](#) [MIKROE-2349](#) [WCM.01.0111](#) [MIKROE-2393](#) [MIKROE-2352](#)