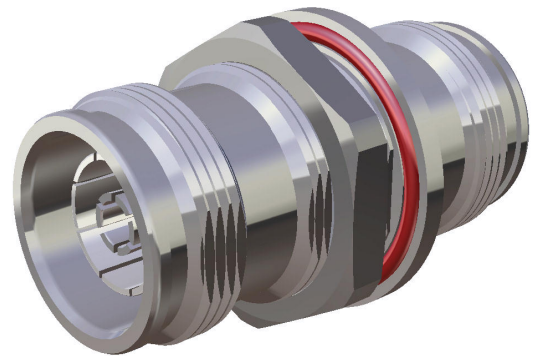


Within Series Adaptor 34_4310-50-0-1/003_-

Description

Bulkhead adaptor jack/jack
4.3-10 jack (female) / 4.3-10 jack (female)

Interface standard
Series 4.3-10 - IEC 61169-54



Technical Data

Electrical Data

Impedance 50 Ω
Interface frequency max. 12 GHz

Mechanical Data

Number of matings 100
Weight 0.076 kg

Environmental Data

Operating temperature -55 °C to 90 °C
2011/65/EU (RoHS - including
2015/863 and 2017/2102) compliant

Material Data

Interface - 4.3-10 jack (female)

Piece Parts	Material	Surface Plating
Centre contact	Copper Beryllium Alloy	Silver Plating
Outer contact	Bronze	Silver Plating
Body	Brass	SUCOPLATE (R) Plating
Insulator	PTFE (Polytetrafluoroethylene)	
Gasket	VMQ (Silicone rubber)	

Interface - 4.3-10 jack (female)

Piece Parts	Material	Surface Plating
Centre contact	Copper Beryllium Alloy	Silver Plating
Outer contact	Bronze	Silver Plating
Body	Brass	SUCOPLATE (R) Plating
Insulator	PTFE (Polytetrafluoroethylene)	

Related Documents

Outline drawing DOU-00284058
Mounting hole DCA-00292686

Ordering Information

Single package 34_4310-50-0-1/003_-E

Remarks

PIM typ. -166 dBc at 2 x 20 W / 43 dBm

Within Series Adaptor

34_4310-50-0-1/003_-

X-ON Electronics

Largest Supplier of Electrical and Electronic Components

Click to view similar products for [RF Adapters - In Series](#) category:

Click to view products by [Huber & Suhner](#) manufacturer:

Other Similar products are found below :

[5916-1103-603](#) [5919-1503-000](#) [5919-9503-000](#) [651A505](#) [82-5552](#) [9030-9523-502](#) [PN2C](#) [A0407000](#) [R114703000W](#) [R125771001](#)
[R127871001](#) [R141710000W](#) [R141723161](#) [R141730000](#) [R143730700](#) [R143770000](#) [R161703000W](#) [R161753000W](#) [R161791530W](#)
[R201705000](#) [R222705200](#) [R222M40010W](#) [R222M40050](#) [R223703180](#) [R316754000](#) [R405006000](#) [R443162000](#) [AD78TL](#) [HRM-513S](#)
[1996352-2](#) [2157155-1](#) [252169-75](#) [AD158](#) [2101130-1](#) [252186](#) [R114704000W](#) [R114720000W](#) [R125705001](#) [R125705701](#) [R125771000](#)
[R125771001W](#) [R127704001](#) [R127.870.001](#) [R127872001](#) [R141717000](#) [R142710000](#) [R142723000](#) [R143703000](#) [R143704000](#) [R143705700](#)