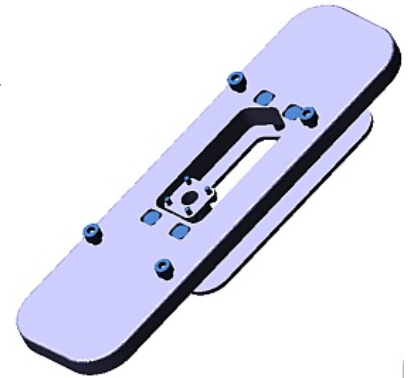


Sencity Rail antenna mounting plate 9091.99.0261

Description

Mounting plate for a Sencity Rail medium or high profile antenna.
Provides optimal mechanical stability for the antenna mounting.
Allows the antenna mounting on a metal or non-metal train roof with a thickness of 0.5 to 12 mm .
Easy mounting procedure without welding.



Technical Data

Mechanical Data

Weight	2.2 kg
Dimensions (mm)	20 x 108 x 360 (Height x Width x Depth)
Wind speed	survival: 500km/h
Material	Aluminium

Screws to mount the antennas are included.
Grounding kit type 9091.99.0235 included.

Environmental Data

IP rating	IP69
2011/65/EU (RoHS - including 2015/863 and 2017/2102)	compliant

Using this product slightly influences the performance of the antenna: Type 1399.99.0130: VSWR 2.3:1 in band 1350 - 1710 MHz, if mounted onto a large metal ground plane OK for smaller ground plane or if no ground plane is present.

Related Documents

Mounting instruction	DOC-0000756067
Painting instruction	DOC-0000256180
Security instruction	DOC-0000278984
Outline drawing1	DOU-00317385
3D-model (Step)	DOC-0000778659

Additional Information

This product is not compatible to all Sencity Rail antennas. Please check the datasheet of the antenna.

Sencity Rail antenna mounting plate 9091.99.0261



X-ON Electronics

Largest Supplier of Electrical and Electronic Components

Click to view similar products for [Antenna Accessories](#) category:

Click to view products by [Huber & Suhner](#) manufacturer:

Other Similar products are found below :

[HKIT-MTA9101-001](#) [YMST4](#) [NMOHPCN518](#) [MB830](#) [MB825](#) [MB820](#) [GRO](#) [W9909](#) [HKIT-MTA9100-001](#) [HKIT-LPx-001](#) [GPS-17519](#)
[MABT8M](#) [KH-IPEX3-0.81](#) [HJ-IPEX1-1.13-SMA-L=100mm](#) [3C0224M01-003](#) [KHA\(RG1.37\)-TX300B-IPEX](#) [KHA\(RG1.37\)-TX80B-IPEX](#)
[KHA\(RG1.37\)-TX140B-IPEX](#) [KH-IPEXA-SMAKWE-B060H](#) [KHA\(RG1.37\)-TX90B-IPEX](#) [KH-IPEX-SMA-RG137-120MM](#) [KH-SMAKW-](#)
[IPEX4-RG1.13-B300](#) [KH-SMAKW-IPEX4-RG0.81-B90](#) [KH-SMAKW-IPEX4-RG1.37-B80](#) [KH-SMAKW-IPEX4-RG1.37-B160](#) [KH-](#)
[SMAKW-IPEX-RG0.81-B70](#) [KH-SMAKW-IPEX-RG0.81-B140](#) [KHA-\(RG1.13\)-TX120-IPEX-221](#) [KHA\(RG1.37\)-TX70B-IPEX](#) [KH-](#)
[SMAKW-IPEX-RG1.78-250](#) [KH-SMAKW-IPEX4-RG0.81-B200](#) [KH-SMAKW-IPEX4-RG1.13-B70](#) [KH-SMAKW-IPEX4-RG1.37-B90](#) [KH-](#)
[SMAJ-221-RG1.78-160](#) [KH-SMAJ-IPEX-RG1.37-B70](#) [KH-SMAJ-IPEX-RG1.37-B60](#) [KH-FL2SMAK-IPEX3-RG0.81-B160](#) [KH-FL2SMAK-](#)
[IPEX4-RG0.81-B100](#) [KH-FL2SMAK-IPEX-RG1.13-B70](#) [KH-FL2SMAK-IPEX4-RG1.13-B90](#) [KH-FL2SMAK-IPEX-RG1.37-B60](#) [KH-](#)
[FL2SMAK-IPEX-RG1.37-B120](#) [KH-FL2SMAK-IPEX4-RG1.37-B80](#) [KH-FL2SMAK-IPEX4-RG1.37-B160](#) [KH-FL2SMAK-IPEX-RG178-](#)
[100](#) [KH-FL2SMAK-IPEX-RG178-200](#) [KH-SMAJ-221-RG1.13-B70](#) [KH-SMAJ-221-RG1.37-B90](#) [KH-FL2SMAK-IPEX-RG0.81-B50](#) [KH-](#)
[FL2SMAK-IPEX3-RG0.81-B300](#)