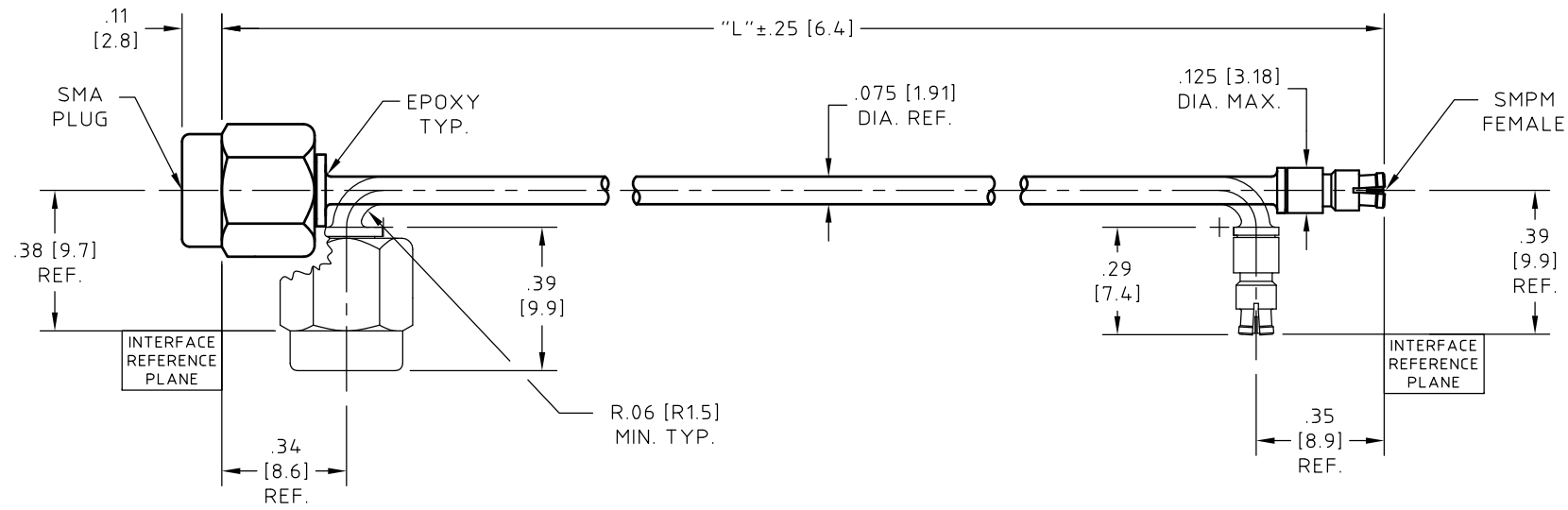


CONTROL DRAWING

microbend MR-XX

M



NOTES:

- DESCRIPTION,
CABLE ASSEMBLY, SMA PLUG TO SMPM FEMALE,
RUGGEDIZED AND SUITABLE FOR COMPLEX,
CONGESTED INSTALLATIONS.
WHEN INSTALLED AND BEND AT THE MINIMUM BEND
RADIUS, CABLE ASSEMBLY WILL TOLERATE MULTIPLE
±90° ROTATIONS AT THE CABLE CONNECTOR JUNCTION.
- CABLE,
COAXIAL CABLE HUBER+SUHNER Astrolab P/N 32041E.
MEETS OR EXCEEDS MIL-DTL-17.
SEE HUBER+SUHNER Astrolab CONTROL DRAWING
FOR MATERIALS AND FINISHES.
- CONNECTOR -A-, SMA PLUG:
HUBER+SUHNER Astrolab P/N 29094CR-32-41
INTERFACE DIMENSIONS IAW MIL-STD-348.
SEE HUBER+SUHNER Astrolab CONTROL DRAWING
FOR MATERIALS AND FINISHES.
- CONNECTOR -B-, SMPM FEMALE:
HUBER+SUHNER Astrolab P/N 29971CR-32-41
INTERFACE DIMENSIONS IAW MIL-STD-348.
SEE HUBER+SUHNER Astrolab CONTROL DRAWING
FOR MATERIALS AND FINISHES.

NOTES CONTINUED:

- MARKING:
ALL MARKING WILL BE DONE ON PACKAGING.
- ELECTRICAL CHARACTERISTICS:
IMPEDANCE,
50.0 Ohms NOMINAL.
FREQUENCY, INSERTION LOSS AND VSWR
SEE CHART.
- MECHANICAL:
OPERATING TEMPERATURE RANGE,
-55° C TO +125° C.
PULL STRENGTH TO 10.0 LBS. [44.5 N].
- ATTENUATION FORMULAS:
8A. CALCULATE AT 18.0 GHz
(dB) = 1.45 dB/FT. X L(ft.)+.36 dB
8B. CALCULATE AT 26.5 GHz
(dB) = 1.80 dB/FT. X L(ft.)+.43 dB

HUBER+SUHNER Astrolab PART NUMBER	DIMENSION "L"	2.0 GHz		18.0 GHz		26.5 GHz	
		VSWR	I.L. dB	VSWR	I.L. dB	VSWR	I.L. dB
microbend MR-2.5	2.50 (63.5)	1.25:1	0.26	1.45:1	0.66	1.50:1	0.81
microbend MR-3	3.00 (76.2)	1.25:1	0.28	1.45:1	0.72	1.50:1	0.88
microbend MR-3.5	3.50 (88.9)	1.25:1	0.29	1.45:1	0.78	1.50:1	0.96
microbend MR-4	4.00 (101.6)	1.25:1	0.31	1.45:1	0.84	1.50:1	1.03
microbend MR-4.5	4.50 (114.3)	1.25:1	0.33	1.45:1	0.90	1.50:1	1.11
microbend MR-5	5.00 (127.0)	1.25:1	0.35	1.45:1	0.96	1.50:1	1.18
microbend MR-5.5	5.50 (139.7)	1.25:1	0.37	1.45:1	1.02	1.50:1	1.26
microbend MR-6	6.00 (152.4)	1.25:1	0.39	1.45:1	1.09	1.50:1	1.33
microbend MR-7	7.00 (177.8)	1.25:1	0.43	1.45:1	1.21	1.50:1	1.48
microbend MR-8	8.00 (203.2)	1.25:1	0.47	1.45:1	1.33	1.50:1	1.63
microbend MR-9	9.00 (228.6)	1.25:1	0.51	1.45:1	1.45	1.50:1	1.78
microbend MR-10	10.00 (254.0)	1.25:1	0.54	1.45:1	1.57	1.50:1	1.93
microbend MR-11	11.00 (279.4)	1.25:1	0.58	1.45:1	1.69	1.50:1	2.08
microbend MR-12	12.00 (304.8)	1.25:1	0.62	1.45:1	1.81	1.50:1	2.23
microbend MR-		1.25:1		1.45:1		1.50:1	

SEE NOTE 8

NOT RoHS COMPLIANT

UNLESS OTHERWISE SPECIFIED
CONCENTRICITY .004 T.I.R.
CORNERS AND FILLETS .005
MAX. RADIUS OR CHAMFER.
SURFACE FINISH 63 RMS
MICROINCHES OR BETTER.

FRACTIONS	± 1/16
X	± .030
XX	± .015
XXX	± .005
ANGLES	± 1°
DO NOT SCALE DRAWING	

NAME	DATE
PREP. AP	11/20/03
ELEC. RF	11/21/03
MECH. GSG	11/21/03
Q.C. AG	11/21/03

HUBER+SUHNER
Astrolab

THIS DRAWING CONTAINS PATENTABLE AND PROPRIETARY INFORMATION. THE DESIGN CANNOT BE USED WITHOUT WRITTEN PERMISSION OF HUBER + SUHNER ASTROLAB.

TITLE	CABLE ASSEMBLY, SMA PLUG TO SMPM FEMALE		
THDS. TO BE IN ACCORD WITH U.S. DEPT. OF COMM. SCREW THD. STDS. FOR FEDERAL SERVICES 1950 SUPL. TO HANDBOOK H 28.	SCALE	CODE IDENT.	DWG NO.
	2:1	16301	microbend MR-XX
REV	M		

M	RoHS STATUS UPDATE	12/12/17	GS	
REV.	DESCRIPTION	DATE	BY	APPROVED

X-ON Electronics

Largest Supplier of Electrical and Electronic Components

Click to view similar products for [RF Cable Assemblies](#) category:

Click to view products by [Huber & Suhner](#) manufacturer:

Other Similar products are found below :

[73-6352-10](#) [73-6353-3](#) [73-6364-6](#) [R285001001](#) [R288940004](#) [145111-05-12.00](#) [1661-C-24](#) [1801171170914KE](#) [24P104C24J1-012](#)
[24P104C24P1-006](#) [24P104C24P1-018](#) [24P204C24J1-003](#) [172-2150-EX](#) [1800920920914PJ](#) [FCB-3030-ALT](#) [21117-046](#) [21117-050](#) [PCX-24-](#)
[50](#) [24P103C24P2-003](#) [25P203C25P2-003](#) [PTWY-24-78](#) [R284008001](#) [R285001021](#) [R285426000](#) [R288940003](#) [R288940008](#) [4814-BB-24](#)
[5260-72](#) [JT2N1-CL1-1F](#) [DLP-COAX1](#) [4814-K-48](#) [115101-09-06.00](#) [MXHT83QE3000](#) [CCNTN2-MM-LL335-26](#) [73-6351-25](#) [73-6352-3](#) [73-](#)
[6353-25](#) [1800920920610PJ](#) [GD0BQ0BQ024.0](#) [1-3636-600-5210](#) [TL8A-11SMA-11SMA-01500-51](#) [R284C0351060](#) [R288940009](#)
[R284C0351028](#) [R288940002](#) [9702-1SL-1](#) [PT82NSMA](#) [73-6353-10](#) [R285020301W](#) [PCX-18-50](#)