

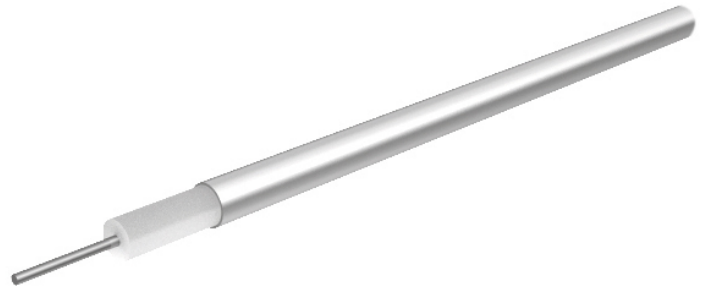
## Formable microwave cable

SR\_250\_AL\_TP Item: 22810708

### Description

Semi-rigid: Semi-rigid, formable microwave cables

RG401 dimension, 50 Ohm, 18 GHz, 100°C, ø6.35 mm, no jacket



### Technical Data

#### Construction

	Material	Detail	Diameter
Centre conductor	Copper, Silver plated	Wire	1.63 mm
Dielectric	PTFE (Polytetrafluoroethylene)		5.31 mm
Outer conductor	Aluminum / TP	Tube, 100%	6.35 mm

#### Electrical Data

Impedance	50 Ω +/- 0.5
Operating Frequency	18 GHz
Capacitance	97.1 pF/m
Velocity of signal propagation	69.5 %
Signal delay	4.8 ns/m
Screening effectiveness	≥ 120 dB (up to 18 GHz)
Operating voltage	≤ 3 kV <sub>rms</sub> (at sea level)
Test voltage	7.5 kV <sub>rms</sub> (50 Hz/1 min)

#### Mechanical Data

Weight		8.86 kg/100 m
Min. bending radius	static	6.35 mm

#### Environmental Data

Temperature range	-55 °C ... +100 °C
Installation temperature	-20 °C... +60 °C
Halogen free	No
2011/65/EU (RoHS - including 2015/863 and 2017/2102)	compliant
1907/2006/EC (REACH)	compliant
2000/53/EC (ELV)	compliant
2012/19/EU (WEEE)	no special marking needed

### Additional Information

#### Remarks

(For details refer to the HUBER+SUHNER RF CABLES GENERAL CATALOGUE or contact your nearest HUBER+SUHNER partner)

#### Suitable Connectors

Cable group	Y7 5 mm / 50 Ohm
-------------	------------------

## Formable microwave cable

SR\_250\_AL\_TP Item: 22810708

**Matrix** typical Attenuation [ formula:  $(a \cdot f^{0.5} + b \cdot f)$  ] and maximum Power CW [ formula:  $(p/f^{0.5})$  ]

Coefficients:

a = 0.1963

b = 0.03967

f<sub>max</sub> = 18

P at 1GHz = 1400

Frequency (GHz)	Nom. attenuation (dB / m) sea level 25° C ambient temperature	Nom. attenuation (dB / ft) sea level 25° C ambient temperature	Max. CW power (W) sea level 40° C ambient temperature
0.9	0.22	0.068	1476
1.8	0.33	0.102	1043
2.7	0.43	0.131	852
3.6	0.52	0.157	738
4.5	0.59	0.181	660
5.4	0.67	0.204	602
6.3	0.74	0.226	558
7.2	0.81	0.248	522
8.1	0.88	0.268	492
9.0	0.95	0.288	467
9.9	1.01	0.308	445
10.8	1.07	0.327	426
11.7	1.14	0.346	409
12.6	1.2	0.365	394
13.5	1.26	0.383	381
14.4	1.32	0.401	369
15.3	1.37	0.419	358
16.2	1.43	0.437	348
17.1	1.49	0.454	339
18.0	1.55	0.471	330

## X-ON Electronics

Largest Supplier of Electrical and Electronic Components

*Click to view similar products for [RF Cable Assemblies](#) category:*

*Click to view products by [Huber & Suhner](#) manufacturer:*

Other Similar products are found below :

[73-6352-10](#) [73-6353-3](#) [73-6364-6](#) [R285001001](#) [R288940004](#) [145111-05-12.00](#) [1661-C-24](#) [1801171170914KE](#) [24P104C24J1-012](#)  
[24P104C24P1-006](#) [24P104C24P1-018](#) [24P204C24J1-003](#) [172-2150-EX](#) [1800920920914PJ](#) [FCB-3030-ALT](#) [21117-046](#) [21117-050](#) [PCX-24-](#)  
[50](#) [24P103C24P2-003](#) [25P203C25P2-003](#) [PTWY-24-78](#) [R284008001](#) [R285001021](#) [R285426000](#) [R288940003](#) [R288940008](#) [4814-BB-24](#)  
[5260-72](#) [JT2N1-CL1-1F](#) [DLP-COAX1](#) [4814-K-48](#) [115101-09-06.00](#) [MXHT83QE3000](#) [CCNTN2-MM-LL335-26](#) [73-6351-25](#) [73-6352-3](#) [73-](#)  
[6353-25](#) [1800920920610PJ](#) [GD0BQ0BQ024.0](#) [1-3636-600-5210](#) [TL8A-11SMA-11SMA-01500-51](#) [R284C0351060](#) [R288940009](#)  
[R284C0351028](#) [R288940002](#) [9702-1SL-1](#) [PT82NSMA](#) [73-6353-10](#) [R285020301W](#) [PCX-18-50](#)