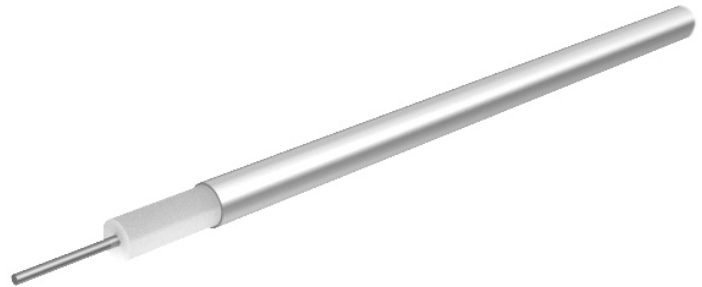


Formable microwave cable SR_86_75_TP Item: 22810164

Description

Semi-rigid: Semi-rigid, formable microwave cables
75 Ohm, 63 GHz, 140°C, ø2.2 mm, no jacket



Technical Data

Construction

	Material	Detail	Diameter
Centre conductor	Steel, Copper+Silver plated	Wire	0.29 mm
Dielectric	PTFE (Polytetrafluoroethylene)		1.73 mm
Outer conductor	Copper, Tin plated	Tube, 100%	2.2 mm

Electrical Data

Impedance	75 Ω +/- 2
Operating Frequency	63 GHz
Velocity of signal propagation	69.5 %
Screening effectiveness	≥ 120 dB (up to 18 GHz)
Operating voltage	≤ 1.2 kV _{rms} (at sea level)
Test voltage	2.5 kV _{rms} (50 Hz/1 min)

Mechanical Data

Weight	0.27 kg/100 m
Min. bending radius	static 3.18 mm

Environmental Data

Temperature range	-55 °C ... +140 °C
Halogen free	No
2011/65/EU (RoHS - including 2015/863 and 2017/2102)	compliant
1907/2006/EC (REACH)	compliant
2000/53/EC (ELV)	compliant
2012/19/EU (WEEE)	no special marking needed

Additional Information

Remarks

(For details refer to the HUBER+SUHNER RF CABLES GENERAL CATALOGUE or contact your nearest HUBER+SUHNER partner)

Suitable Connectors

Cable group	Y4 2 mm / 75 Ohm
-------------	------------------

Formable microwave cable SR_86_75_TP Item: 22810164

Matrix typical Attenuation [formula: $(a \cdot f^{0.5} + b \cdot f)$] and maximum Power CW [formula: $(p/f^{0.5})$]

Coefficients:

a =	b =	$f_{\max} = 63$	P at 1GHz =
-----	-----	-----------------	-------------

Frequency (GHz)	Nom. attenuation (dB / m) sea level 25° C ambient temperature	Nom. attenuation (dB / ft) sea level 25° C ambient temperature	Max. CW power (W) sea level 40° C ambient temperature
3.15			
6.3			
9.45			
12.6			
15.75			
18.9			
22.05			
25.2			
28.35			
31.5			
34.65			
37.8			
40.95			
44.1			
47.25			
50.4			
53.55			
56.7			
59.85			
63.0			

X-ON Electronics

Largest Supplier of Electrical and Electronic Components

Click to view similar products for [RF Cable Assemblies](#) category:

Click to view products by [Huber & Suhner](#) manufacturer:

Other Similar products are found below :

[73-6352-10](#) [73-6353-3](#) [73-6364-6](#) [R285001001](#) [R288940004](#) [145111-05-12.00](#) [1661-C-24](#) [1801171170914KE](#) [24P104C24J1-012](#)
[24P104C24P1-006](#) [24P104C24P1-018](#) [24P204C24J1-003](#) [172-2150-EX](#) [1800920920914PJ](#) [FCB-3030-ALT](#) [21117-046](#) [21117-050](#) [PCX-24-](#)
[50](#) [24P103C24P2-003](#) [25P203C25P2-003](#) [PTWY-24-78](#) [R284008001](#) [R285001021](#) [R285426000](#) [R288940003](#) [R288940008](#) [4814-BB-24](#)
[5260-72](#) [JT2N1-CL1-1F](#) [DLP-COAX1](#) [4814-K-48](#) [115101-09-06.00](#) [MXHT83QE3000](#) [CCNTN2-MM-LL335-26](#) [73-6351-25](#) [73-6352-3](#) [73-](#)
[6353-25](#) [1800920920610PJ](#) [GD0BQ0BQ024.0](#) [1-3636-600-5210](#) [TL8A-11SMA-11SMA-01500-51](#) [R284C0351060](#) [R288940009](#)
[R284C0351028](#) [R288940002](#) [9702-1SL-1](#) [PT82NSMA](#) [73-6353-10](#) [R285020301W](#) [PCX-18-50](#)