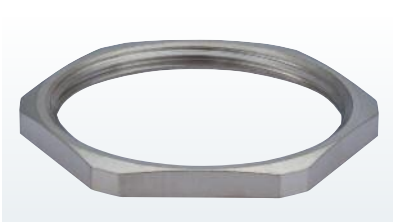
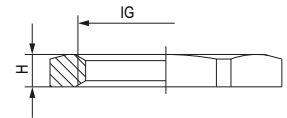


Locknut GM-Ms Metr., PG, G

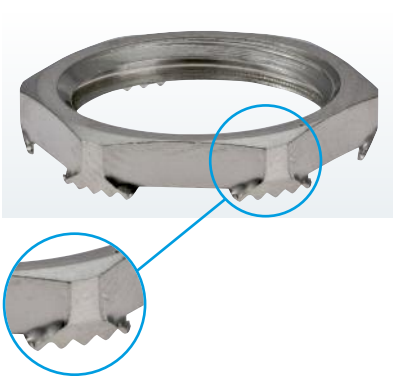


Material Nickel plated brass

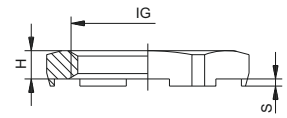


IG	H mm	mm	Number	IG	H mm	mm	Number	IG	H mm	mm	Number
M 12 x 1,5	2,8	15	1.161.1200.50	M 100 x 2	11	115	1.161.1000.50	PG 42	5,0	60	1.161.4200.01
M 16 x 1,5	2,8	19	1.161.1600.50	M 110 x 2	11	125	1.161.1100.50	PG 48	5,5	64	1.161.4800.01
M 20 x 1,5	3,0	23	1.161.2000.50	PG 7	2,8	15	1.161.0700.01	G 2 1/2"	7	80	1.106.5200.99
M 25 x 1,5	3,5	29	1.161.2500.50	PG 9	2,8	18	1.161.0900.01	G 3"	8	95	1.106.3000.99
M 32 x 1,5	4,0	36	1.161.3200.50	PG 11	3,0	21	1.161.1100.01	G 4"	11	125	1.106.4000.99
M 40 x 1,5	4,5	45	1.161.4000.50	PG 13,5	3,0	23	1.161.1300.01				
M 50 x 1,5	5,5	55	1.161.5000.50	PG16	3,0	26	1.161.1600.01				
M 63 x 1,5	6,0	70	1.161.6300.50	PG 21	3,5	32	1.161.2100.01				
M 75 x 1,5	8,0	85	1.161.7500.50	PG 29	4,0	41	1.161.2900.01				
M 80 x 2	8,0	90	1.161.8000.50	PG 36	5,0	51	1.161.3600.01				
M 90 x 2	8,0	100	1.161.9000.50								

Locknut GM-EMC Metr., PG



Material Nickel plated brass



IG	H mm	mm	S mm	Number	IG	H mm	mm	S mm	Number
M 12 x 1,5	2,8	15	0,7	1.167.1200.50	PG 7	2,8	15	0,7	1.167.0700.01
M 16 x 1,5	2,8	19	0,7	1.167.1600.50	PG 9	2,8	18	0,7	1.167.0900.01
M 20 x 1,5	3,0	24	0,7	1.167.2000.50	PG 11	3,0	21	0,7	1.167.1100.01
M 25 x 1,5	3,5	30	0,7	1.167.2500.50	PG 13,5	3,0	23	0,7	1.167.1300.01
M 32 x 1,5	4,5	36	0,7	1.167.3200.50	PG 16	3,0	26	0,7	1.167.1600.01
M 40 x 1,5	5,0	46	0,7	1.167.4000.50	PG 21	3,5	32	0,7	1.167.2100.01
M 50 x 1,5	5,0	60	0,7	1.167.5000.50	PG 29	4,0	41	0,7	1.167.2900.01
M 63 x 1,5	6,0	70	0,7	1.167.6300.50	PG 36	5,0	51	0,7	1.167.3600.01
					PG 42	5,0	60	0,7	1.167.4200.01
					PG 48	5,5	64	0,7	1.167.4800.01

X-ON Electronics

Largest Supplier of Electrical and Electronic Components

Click to view similar products for [Hummel](#) manufacturer:

Other Similar products are found below :

[1321160057](#) [1.209.4002.31](#) [1.293.3800.70](#) [1.209.6301.51](#) [1.209.6400.71](#) [1.676.2500.50](#) [1.106.6375.50](#) [1.740.3203.51](#) [1.052.2001.50](#)
[1.272.3225.50](#) [1.587.2018.50](#) [1.631.5000.50](#) [1.693.4000.50](#) [1.695.4000.51](#) [2 253 3434 01](#) [1.209.2901.15](#) [1.209.6300.30](#) [1.209.6301.31](#)
[1.209.2100.61](#) [1.609.1300.61](#) [1.097.2520.50](#) [1.161.1100.01](#) [1.239.2013.50](#) [1695.2900.01](#) [1.262.3600.11](#) [1.609.3600.15](#) [1.676.3200.51](#)
[1.292.1612.51](#) [1.605.2000.52](#) [7.R20.408.000](#) [7.R41.008.000](#) [1.167.4800.01](#) [1.313.3201.51](#) [1.750.3200.50](#) [1.292.5002.31](#) [1.693.2500.50](#) [2](#)
[531 1400 01](#) [2 552 1234 01](#) [1.209.1200.70](#) [1.209.4002.30](#) [1.209.6302.31](#) [1.209.5000.30](#) [1.209.6302.30](#) [7.010.942.001](#) [1.209.6300.51](#)
[1.272.2016.50](#) [1.609.4000.52](#) [1.209.6400.70](#) [1.609.5000.51](#) [1.609.6300.50](#)