

EcoTec

CABLE GLANDS

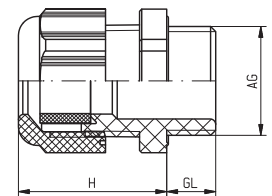


CABLE GLANDS

EcoTec-PA



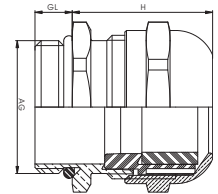
Material	PA
Seal	Buna-N
Protection	IP 68 – 5 bar (NEMA 6 – 150 PSIG) with additional O-Ring
Operating Temperature	-40 °C – 100 °C (-40 °F – 212 °F) (static) -20 °C – 80 °C (-4 °F – 176 °F) (dynamic)
Colors	grey (RAL 7035), black (RAL 9005) (other colours on request)



AG	\varnothing mm	GL mm	H mm		Number grey	Number black
M 12 x 1,5	3 – 6,5	8	21	15	LCM12G	LCM12B
M 16 x 1,5	4 – 8	8	22	19	LCM16G	LCM16B
M 16 x 1,5	5 – 10	8	25	22	LCM16GE	LCM16BE
M 20 x 1,5	6 – 12	9	27	24	LCM20G	LCM20B
M 20 x 1,5	10 – 14	10	28,5	27	LCM20GE	LCM20BE
M 25 x 1,5	13 – 18	11	31,5	33	LCM25G	LCM25B
M 32 x 1,5	18 – 25	11	40	42	LCM32G	LCM32B
M 40 x 1,5	22 – 32	13	48	53	LCM40G	LCM40B
M 50 x 1,5	32 – 38	13	49	60	LCM50G	LCM50B
M 63 x 1,5	37 – 44	14	49	65	LCM63G	LCM63B
Pg 7	3 – 6,5	8	21	15	LCP07G	LCP07B
Pg 9	4 – 8	8	22	19	LCP09G	LCP09B
Pg 11	5 – 10	8	25	22	LCP11G	LCP11B
Pg 13,5	6 – 12	9	27	24	LCP13G	LCP13B
Pg 16	10 – 14	10	28,5	27	LCP16G	LCP16B
Pg 21	13 – 18	11	31,5	33	LCP21G	LCP21B
Pg 29	18 – 25	11	40	42	LCP29G	LCP29B



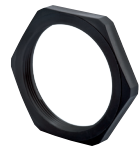
Material	Nickel plated brass
Clamping insert	Polyamide
Seal	NBR
O-Ring	Buna-N
Protection	IP 68 – 5 bar
Operating Temperature	-40 °C – 100 °C (-40 °F – 212 °F) (static) -20 °C – 80 °C (-4 °F – 176 °F) (dynamic)



AG	∅ mm	GL mm	H mm	mm	Number	GL mm	Number elongated
M 12 x 1,5	3 – 6,5	6	18	14	MLCM12	10	MLCM12 L
M 16 x 1,5	4,5 – 10	6	22	19	MLCM16	10	MLCM16 L
M 20 x 1,5	6 – 12	6	23,5	22	MLCM2013	10	MLCM2013 L
M 20 x 1,5	7,5 – 14	6	24,5	24	MLCM20	10	MLCM20 L
M 25 x 1,5	9 – 17	7	26,5	29	MLCM25	12	MLCM25 L
M 32 x 1,5	11 – 21	8	34	34	MLCM32	12	MLCM32 L
M 40 x 1,5	19 – 28	8	36,5	44	MLCM40	15	MLCM40 L
M 50 x 1,5	27 – 35	9	45	55	MLCM50	15	MLCM50 L
M 63 x 1,5	34 – 48	10	48	68	MLCM63	15	MLCM63 L

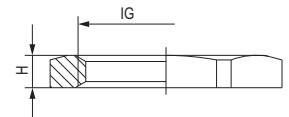
Locknut GM-FS


Metr., PG, NPT



Material	Polyamide
Operating Temperature	-40 °C – 100 °C (-40 °F – 212 °F)
Colors	grey (RAL 7035), black (RAL 9005)

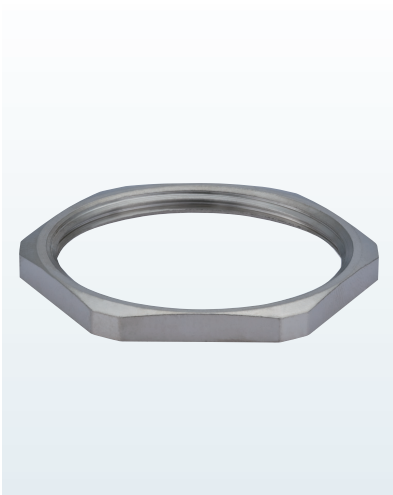
// Other colors on request



IG	H mm	 mm	Number PA grey	Number PA black
M 12 x 1,5	5	17	1.261.1200.50	1.261.1201.50
M 16 x 1,5	5	22	1.261.1600.50	1.261.1601.50
M 20 x 1,5	6	27	1.261.2000.50	1.261.2001.50
M 25 x 1,5	6,5	32	1.261.2500.50	1.261.2501.50
M 32 x 1,5	7	41	1.261.3200.50	1.261.3201.50
M 40 x 1,5	7	50	1.261.4000.50	1.261.4001.50
M 50 x 1,5	8	60	1.261.5000.50	1.261.5001.50
M 63 x 1,5	8	75	1.261.6300.50	1.261.6301.50
PG 7	5	19	1.261.0700.10	1.261.0701.10
PG 9	5	22	1.261.0900.10	1.261.0901.10
PG 11	5	24	1.261.1100.10	1.261.1101.10
PG 13,5	6	27	1.261.1300.10	1.261.1301.10
PG 16	6	30	1.261.1600.10	1.261.1601.10
PG 21	7	36	1.261.2100.10	1.261.2101.10
PG 29	7	46	1.261.2900.10	1.261.2901.10

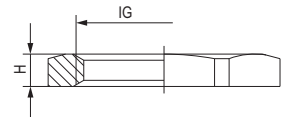
Locknut GM-Ms


Metr., PG, G



Material

Nickel plated brass

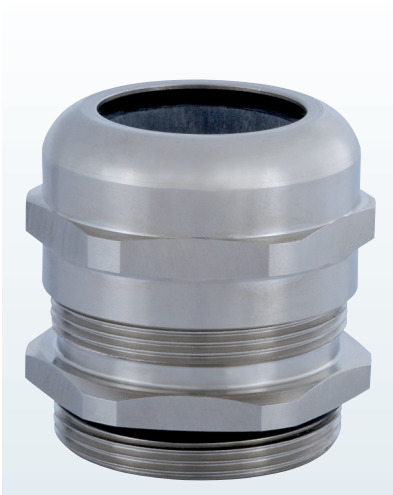


IG	H mm	 mm	Number
M 12 x 1,5	2,8	15	1.162.1200.50
M 16 x 1,5	2,8	19	1.162.1600.50
M 20 x 1,5	3,0	23	1.162.2000.50
M 25 x 1,5	3,5	29	1.162.2500.50
M 32 x 1,5	4,0	36	1.162.3200.50
M 40 x 1,5	4,5	45	1.162.4000.50
M 50 x 1,5	5,5	55	1.162.5000.50
M 63 x 1,5	6,0	70	1.162.6300.50

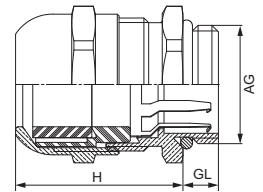
CABLE GLANDS


EcoTec-Ms-EMC

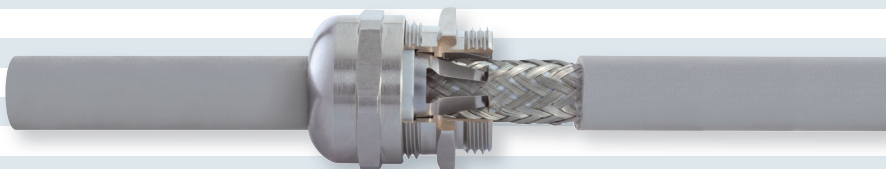
Metr.



Material	Nickel plated brass
Clamping insert	Polyamide
Seal	Buna-N
O-Ring	Buna-N
Protection	IP 68 – 5 bar
Operating Temperature	-40 °C – 100 °C (-40 °F – 212 °F)



AG	\varnothing mm	GL mm	H mm	 mm	Number
M 12 x 1,5	3–6,5	6	19,4	14	MLCM12EMV
M 16 x 1,5	4,5–10	6	24,4	19	MLCM16EMV
M 20 x 1,5	6–12	6	25,4	22	MLCM2013EMV
M 20 x 1,5	7,5–14	6	28,3	24	MLCM20EMV
M 25 x 1,5	9–17	7	29,3	29	MLCM25EMV
M 32 x 1,5	11–21	8	37,7	34	MLCM32EMV
M 40 x 1,5	19–28	8	40,7	44	MLCM40EMV
M 50 x 1,5	27–35	9	50,7	55	MLCM50EMV
M 63 x 1,5	34–48	10	55,7	68	MLCM63EMV



X-ON Electronics

Largest Supplier of Electrical and Electronic Components

Click to view similar products for [Hummel](#) manufacturer:

Other Similar products are found below :

[1.209.6300.30](#) [1.152.4000.50](#) [1.209.6400.70](#) [1.209.6400.71](#) [1.609.3600.15](#) [1.609.5000.51](#) [1.106.6375.50](#) [7.R52.408.000](#) [1.292.2016.31](#)
[1.292.3202.30](#) [1.610.4000.50](#) [1.633.2000.51](#) [1.878.4025.50](#) [1.895.6300.50](#) [1.587.1000.71](#) [1.676.2000.50](#) [1.693.4000.50](#) [1.695.4000.51](#) [2 500](#)
[1400 01](#) [2 253 3434 01](#) [1.209.6301.31](#) [1.609.1200.71](#) [1.609.4800.01](#) [1.609.6300.50](#) [1.676.3200.51](#) [1.740.2503.50](#) [1.292.5001.30](#)
[1.292.5002.31](#) [1.292.6301.51](#) [1.628.3200.50](#) [1.640.6300.51](#) [1.879.4020.50](#) [1.022.5000.50](#) [1.022.6300.50](#) [1.313.2901.14](#) [1.587.5000.50](#)
[1.693.2500.50](#) [2 531 1400 01](#) [2 730 3412 03](#) [2 552 1234 01](#) [1.209.1200.70](#) [1.209.6302.31](#) [1.209.5000.30](#) [1.209.6302.30](#) [1.209.6301.51](#)
[1.609.6300.31](#) [1.676.2000.51](#) [1.691.4000.50](#) [1.740.1603.50](#) [A712-7.K10.400.000](#)