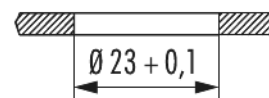
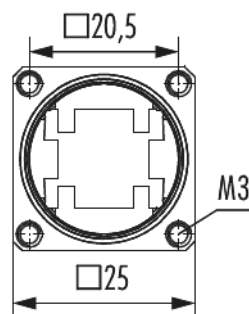
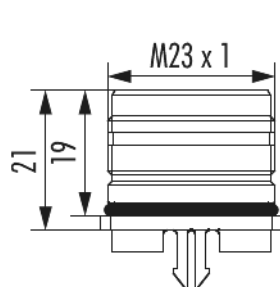


# Housing panel connector M23 RJ45 PCB mounting

Item number 7R45008000



## Technical data

**Material housing** brass , Zinc Die Cast

**Material housing surface** Nickel

**Insert** RJ45

**Installation type** Rear wall

**Version** with vibration protection

**External thread plug-in side** M23 x 1

**Internal thread plug-in side** -

**Locking type** Screw

**Shield** unshielded

**Seal type** O-Ring

**Material seals/o-rings** FKM (FPM) , NBR

## Coding position

**Panel hole** Ø 23 + 0,1 mm

**Drill form** - mm

**Flange** 25 x 25 mm

**Hole distance** 20.5 mm

# Housing panel connector M23 RJ45 PCB mounting

Item number 7R45008000

Hole diameter	4 x M3 mm
Length (L)	21 mm
Allen key/Torx	-
Protection class	IP 67 , IP 69 K
Temperature range	-40°C to +125°C
suitable contact inserts	7MRJ450007 , A7RJ-081M41 , A7RJ-081M6A , A7RJ-821M51

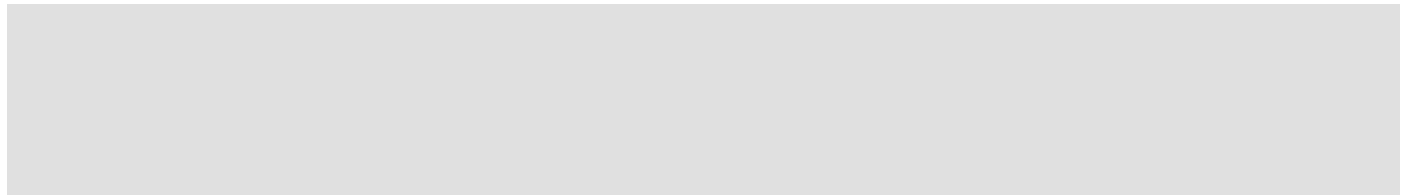
# Housing panel connector M23 RJ45 PCB mounting

Item number 7R45008000

## Commercial data

Packaging Unit	25
EAN code	4033878505120
Weight	0.02018 kg
ETIM 7	EC003556
ETIM 8	EC003556
eCl@ss 10.1	27440224
Customs tariff number	85366990

Note:



## X-ON Electronics

Largest Supplier of Electrical and Electronic Components

*Click to view similar products for [Circular MIL Spec Connector](#) category:*

*Click to view products by [Hummel](#) manufacturer:*

Other Similar products are found below :

[89075GULPR](#) [0025-262-542](#) [0025-263-3014](#) [0025-264-3014](#) [0031-065-002](#) [0031-071-002](#) [0134-201-1007](#) [0134-202-0800](#) [0134-202-1200](#)  
[0134-202-2407](#) [0134-207-1206](#) [0134-207-1800](#) [0134-207-2207](#) [0134-213-0806](#) [0134-213-1007](#) [0134-213-1009](#) [0134-213-1200](#) [0134-213-1208](#) [0134-213-1800](#) [0134-213-2209](#) [0025-258-000](#) [0025-259-542](#) [0031-066-002](#) [0031-068-002](#) [0031-069-002](#) [0031-070-002](#) [0031-072-002](#)  
[015-9516-002](#) [020313-0043](#) [020340-0009](#) [020418-0036](#) [020419-0080](#) [020419-0120](#) [020420-0108](#) [60-042022-07P](#) [60-042022-23P](#) [60-042217-10P](#) [60-042217-11P](#) [60-042722-19P](#) [0104-201-2402](#) [0114-201-1278](#) [024251-0015](#) [602GB06EG1832SN](#) [0134-201-1207](#) [0134-201-1410](#) [0134-201-1806](#) [0134-201-2006](#) [0134-201-2007](#) [0134-201-2010](#) [0134-201-2200](#)