



Features

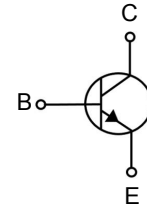
- Collector Current Capability $I_c=0.2A$
- Collector Emitter Voltage $V_{CE0}=40V$

Package Marking and Ordering Information

Product ID	Pack	Marking	Qty(PCS)
MMST3904	SOT-323	K2N	3000



SOT-323



Maxmim Ratings (Ta=25 unless otherwise noted)

Parameter	Symbol	Rating	Unit
Collector - Base Voltage	V_{CB0}	60	V
Collector - Emitter Voltage	V_{CE0}	40	
Emitter - Base Voltage	V_{EB0}	5	
Collector Current - Continuous	I_c	200	mA
Collector Power Dissipation	P_c	200	mW
Thermal Resistance From Junction To Ambient	$R_{\theta JA}$	625	$^{\circ}C/W$
Junction Temperature	T_J	150	$^{\circ}C$
Storage Temperature Range	T_{stg}	-55 to 150	

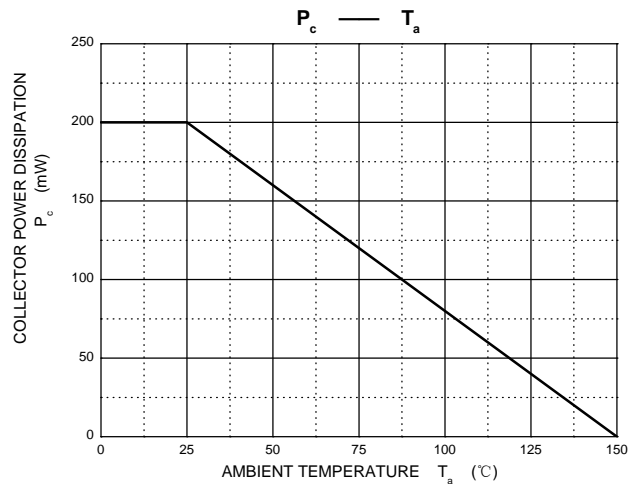
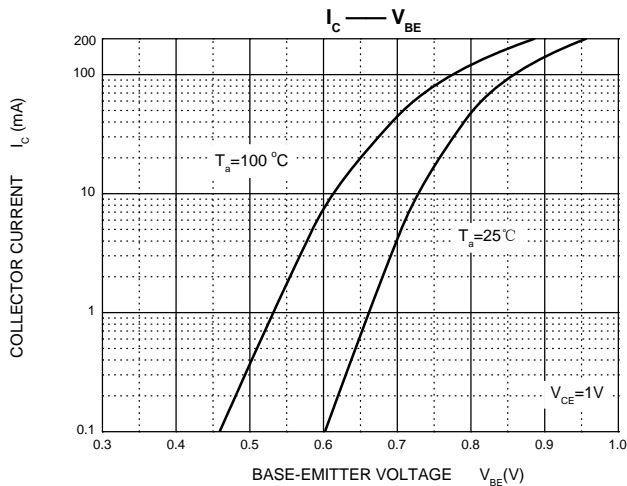
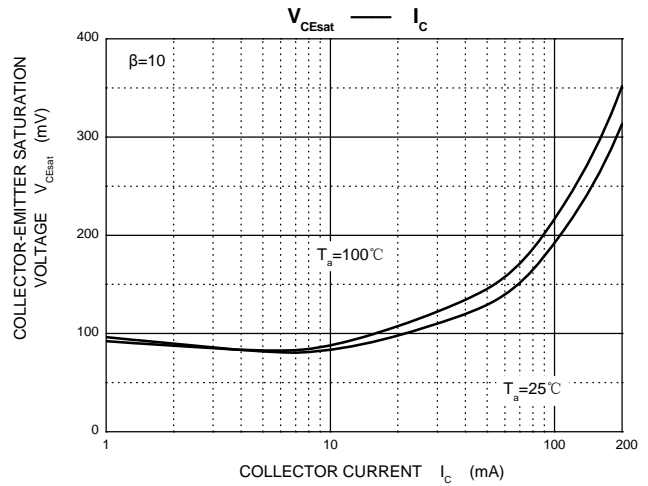
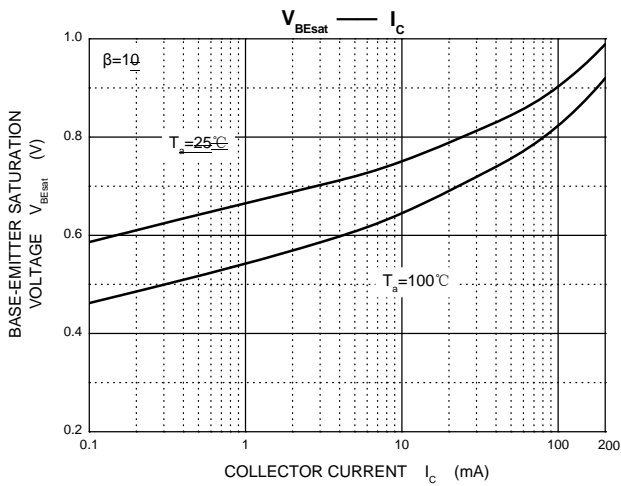
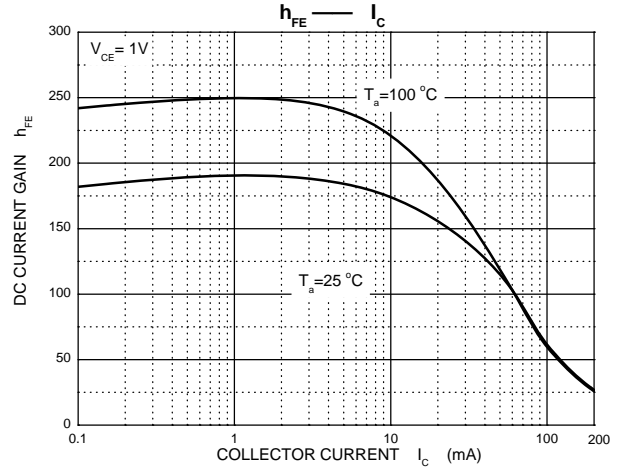
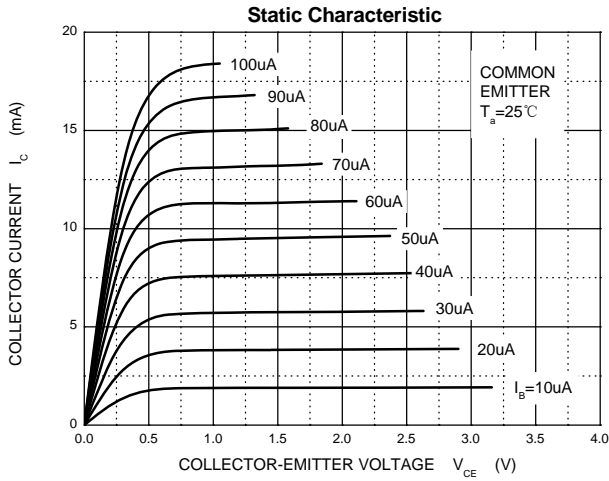
Electrcal Characteristics (Ta=25 unless otherwise specified)

Parameter	Symbol	Test Conditions	Min	Typ	Max	Unit
Collector- base breakdown voltage	V_{CB0}	$I_c=100\mu A, I_E=0$ (Note.1)	60			V
Collector- emitter breakdown voltage	V_{CE0}	$I_c=1mA, I_B=0$ (Note.1)	40			
Emitter - base breakdown voltage	V_{EB0}	$I_E=100\mu A, I_C=0$ (Note.1)	5			
Collector-base cut-off current	I_{CBO}	$V_{CB}=60V, I_E=0$ (Note.1)			60	nA
Collector- emitter cut-off current	I_{CEO}	$V_{CE}=40V, I_E=0$ (Note.1)			700	
Collector- emitter cut-off current	I_{CEX}	$V_{CE}=30V, V_{BE(off)}=3V$			50	
Emitter cut-off current	I_{EBO}	$V_{EB}=5V, I_C=0$			100	
Collector-emitter saturation voltage (Note.1)	$V_{CE(sat)}$	$I_C=10mA, I_B=1mA$			0.25	V
		$I_C=50mA, I_B=5mA$			0.3	
Base - emitter saturation voltage (Note.1)	$V_{BE(sat)}$	$I_C=10mA, I_B=1mA$			0.85	
		$I_C=50mA, I_B=5mA$			0.95	
DC current gain (Note.1)	$h_{FE(1)}$	$V_{CE}=1V, I_C=100\mu A$	40			
	$h_{FE(2)}$	$V_{CE}=1V, I_C=1mA$	70			
	$h_{FE(3)}$	$V_{CE}=1V, I_C=10mA$	100		300	
	$h_{FE(4)}$	$V_{CE}=1V, I_C=50mA$	60			
Delay time	t_d	$V_{CC}=3V, V_{BE(off)}=0.5V, I_C=10mA, I_{B1}=1mA$			35	nS
Rise time	t_r				35	
Storage time	t_s	$V_{CC}=3V, I_C=10mA, I_{B1}=I_{B2}=1mA$			225	
Fall time	t_f				75	
Collector input capacitance	C_{ib}	$V_{EB}=0.5V, I_E=0, f=1MHz$			8	pF
Collector output capacitance	C_{ob}	$V_{CB}=5V, I_E=0, f=1MHz$			4	
Transition frequency	f_T	$V_{CE}=20V, I_C=10mA, f=100MHz$	300			MHz

Note.1: Pulse test: pulse width $\leq 300\mu s$ duty cycle $\leq 2.0\%$.

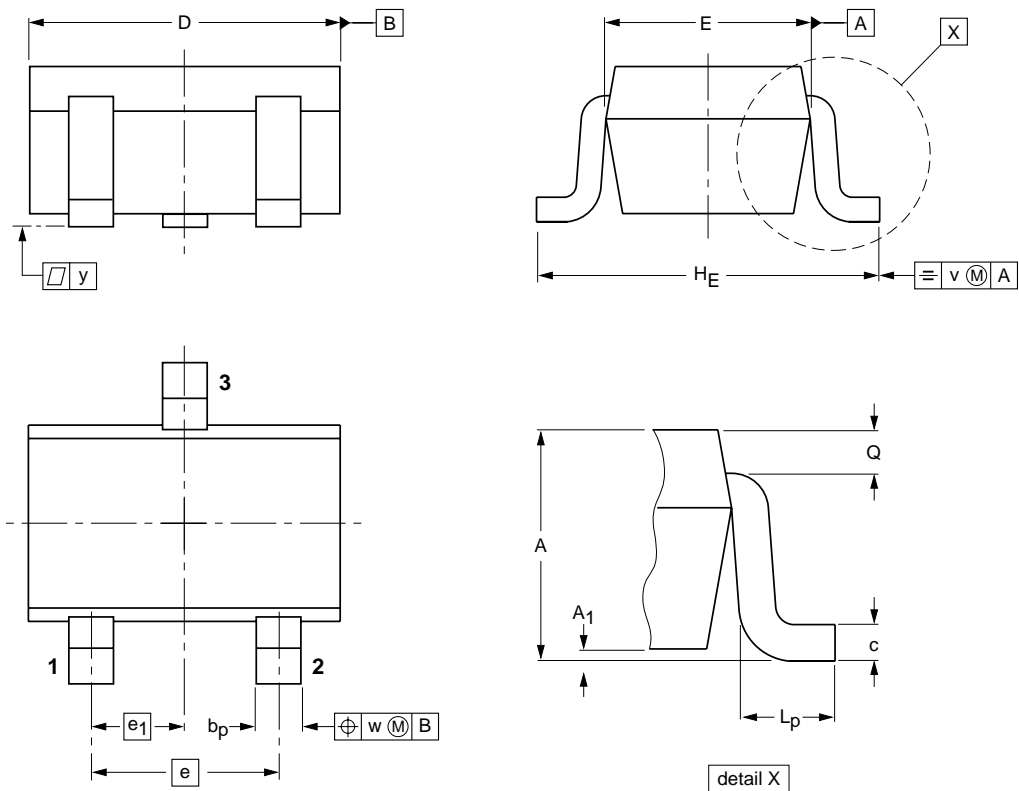


Typical Characteristics





SOT-323 Package Outline Dimensions



DIMENSIONS (mm are the original dimensions)

UNIT	A	A ₁ max	b _p	c	D	E	e	e ₁	H _E	L _p	Q	v	w
mm	1.1 0.8	0.1	0.4 0.3	0.25 0.10	2.2 1.8	1.35 1.15	1.3	0.65	2.2 2.0	0.45 0.15	0.23 0.13	0.2	0.2



Attention

- Any and all HUA XUAN YANG ELECTRONICS products described or contained herein do not have specifications that can handle applications that require extremely high levels of reliability, such as life-support systems, aircraft's control systems, or other applications whose failure can be reasonably expected to result in serious physical and/or material damage. Consult with your HUA XUAN YANG ELECTRONICS representative nearest you before using any HUA XUAN YANG ELECTRONICS products described or contained herein in such applications.
- HUA XUAN YANG ELECTRONICS assumes no responsibility for equipment failures that result from using products at values that exceed, even momentarily, rated values (such as maximum ratings, operating condition ranges, or other parameters) listed in products specifications of any and all HUA XUAN YANG ELECTRONICS products described or contained herein.
- Specifications of any and all HUA XUAN YANG ELECTRONICS products described or contained herein stipulate the performance, characteristics, and functions of the described products in the independent state, and are not guarantees of the performance, characteristics, and functions of the described products as mounted in the customer's products or equipment. To verify symptoms and states that cannot be evaluated in an independent device, the customer should always evaluate and test devices mounted in the customer's products or equipment.
- HUA XUAN YANG ELECTRONICS CO.,LTD. strives to supply high-quality high-reliability products. However, any and all semiconductor products fail with some probability. It is possible that these probabilistic failures could give rise to accidents or events that could endanger human lives, that could give rise to smoke or fire, or that could cause damage to other property. When designing equipment, adopt safety measures so that these kinds of accidents or events cannot occur. Such measures include but are not limited to protective circuits and error prevention circuits for safe design, redundant design, and structural design.
- In the event that any or all HUA XUAN YANG ELECTRONICS products(including technical data, services) described or contained herein are controlled under any of applicable local export control laws and regulations, such products must not be exported without obtaining the export license from the authorities concerned in accordance with the above law.
- No part of this publication may be reproduced or transmitted in any form or by any means, electronic or mechanical, including photocopying and recording, or any information storage or retrieval system, or otherwise, without the prior written permission of HUA XUAN YANG ELECTRONICS CO.,LTD.
- Information (including circuit diagrams and circuit parameters) herein is for example only ; it is not guaranteed for volume production. HUA XUAN YANG ELECTRONICS believes information herein is accurate and reliable, but no guarantees are made or implied regarding its use or any infringements of intellectual property rights or other rights of third parties.
- Any and all information described or contained herein are subject to change without notice due to product/technology improvement, etc. When designing equipment, refer to the "Delivery Specification" for the HUA XUAN YANG ELECTRONICS product that you intend to use.

X-ON Electronics

Largest Supplier of Electrical and Electronic Components

Click to view similar products for [Bipolar Transistors - BJT category](#):

Click to view products by [HXY MOS manufacturer](#):

Other Similar products are found below :

[BC559C](#) [MCH4017-TL-H](#) [MMBT-2369-TR](#) [BC546/116](#) [NJVMJD148T4G](#) [NTE16](#) [NTE195A](#) [IMX9T110](#) [2N4401-A](#) [2N4403](#) [2N6728](#)
[2SA1419T-TD-H](#) [2SA2126-E](#) [2SB1204S-TL-E](#) [FMC5AT148](#) [2N2369ADCSM](#) [2N2907A](#) [2N3904-NS](#) [2N5769](#) [2SC4618TLN](#) [CPH6501-](#)
[TL-E](#) [MCH4021-TL-E](#) [Jantx2N5416](#) [US6T6TR](#) [BAX18/A52R](#) [BC556/112](#) [IMZ2AT108](#) [MMST8098T146](#) [UMX21NTR](#) [MCH6102-TL-E](#)
[TTA1452B,S4X\(S](#) [2N3879](#) [NTE13](#) [NTE282](#) [NTE323](#) [NTE350](#) [NTE81](#) [JANTX2N2920L](#) [JANTX2N3735](#) [JANSR2N2222AUB](#)
[CMLT3946EG TR](#) [SNSS40600CF8T1G](#) [CMLT3906EG TR](#) [GRP-DATA-JANS2N2907AUB](#) [GRP-DATA-JANS2N2222AUA](#)
[MMDT3946FL3-7](#) [2N4240](#) [MSB30KH-13](#) [2N2221AUB](#) [2SD1815T-TL-E](#)