



### Description

The NTD4860N uses advanced trench technology to provide excellent RDS(ON), low gate charge and operation with gate voltages as low as 4.5V. This device is suitable for use as a Battery protection or in other Switching application.

### General Features

$V_{DS} = 30V$   $I_D = 80A$

$R_{DS(ON)} < 6.8m\Omega @ V_{GS} = 10V$

### Application

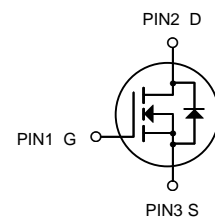
Battery protection

Load switch

Uninterruptible power supply



**TO-252-2L**



N-Channel MOSFET

### Package Marking and Ordering Information

| Product ID | Pack      | Brand      | Qty(PCS) |
|------------|-----------|------------|----------|
| NTD4860N   | TO-252-2L | HXY MOSFET | 2500     |

### Absolute Maximum Ratings ( $T_C = 25^\circ C$ unless otherwise noted)

| Symbol          | Parameter  | Rating     | Units         |
|-----------------|--|------------|---------------|
| $V_{DS}$        | Drain-Source Voltage                               | 30         | V             |
| $V_{GS}$        | Gate-Source Voltage                                | $\pm 20$   | V             |
| $I_D$           | Drain Current – Continuous ( $T_C = 25^\circ C$ )  | 80         | A             |
|                 | Drain Current – Continuous ( $T_C = 100^\circ C$ ) | 51         | A             |
| $I_{DM}$        | Drain Current – Pulsed <sup>1</sup>                | 320        | A             |
| EAS             | Single Pulse Avalanche Energy <sup>2</sup>         | 88         | mJ            |
| IAS             | Single Pulse Avalanche Current <sup>2</sup>        | 42         | A             |
| $P_D$           | Power Dissipation ( $T_C = 25^\circ C$ )           | 54         | W             |
|                 | Power Dissipation – Derate above $25^\circ C$      | 0.43       | W/ $^\circ C$ |
| $T_{STG}$       | Storage Temperature Range                          | -55 to 150 | $^\circ C$    |
| $T_J$           | Operating Junction Temperature Range               | -55 to 150 | $^\circ C$    |
| $R_{\theta JA}$ | Thermal Resistance Junction to ambient             | 62         | $^\circ C/W$  |
| $R_{\theta JC}$ | Thermal Resistance Junction to Case                | 2.3        | $^\circ C/W$  |



**Electrical Characteristics (T<sub>J</sub>=25°C, unless otherwise noted)**

| Symbol                 | Parameter                                      | Conditions  | Min.   | Typ. | Max. | Unit  |
|------------------------|--|---|--|------|------|-------|
| BVDSS                  | Drain-Source Breakdown Voltage                 | V <sub>GS</sub> =0V, I <sub>D</sub> =250uA  | 30   | ---  | ---  | V     |
| ΔBVDSS/ΔT <sub>J</sub> | BV <sub>DSS</sub> Temperature Coefficient      | Reference to 25°C, I <sub>D</sub> =1mA  | ---  | 0.04 | ---  | V/°C  |
| IDSS                   | Drain-Source Leakage Current                   | V <sub>DS</sub> =30V, V <sub>GS</sub> =0V, T <sub>J</sub> =25°C                         | ---  | ---  | 1    | uA    |
|                        |  | V <sub>DS</sub> =24V, V <sub>GS</sub> =0V, T <sub>J</sub> =125°C                        | ---  | ---  | 10   | uA    |
| IGSS                   | Gate-Source Leakage Current                    | V <sub>GS</sub> =±20V, V <sub>DS</sub> =0V  | ---  | ---  | ±100 | nA    |
| RDS(ON)                | Static Drain-Source On-Resistance <sup>3</sup> | V <sub>GS</sub> =10V, I <sub>D</sub> =20A   | ---  | 5    | 6.8  | mΩ    |
|                        |  | V <sub>GS</sub> =4.5V, I <sub>D</sub> =10A  | ---  | 6.5  | 9    | mΩ    |
| VGS(th)                | Gate Threshold Voltage                         | V <sub>GS</sub> =V <sub>DS</sub> , I <sub>D</sub> =250uA                                | 1  | 1.6  | 2.5  | V     |
| ΔV <sub>GS(th)</sub>   | V <sub>GS(th)</sub> Temperature Coefficient    |   | ---  | -4   | ---  | mV/°C |
| gfs                    | Forward Transconductance                       | V <sub>DS</sub> =10V, I <sub>D</sub> =10A   | ---  | 18   | ---  | S     |
| Q <sub>g</sub>         | Total Gate Charge <sup>3,4</sup>               | V <sub>DS</sub> =15V, V <sub>GS</sub> =4.5V, I <sub>D</sub> =20A                        | ---  | 11.1 | ---  | nC    |
| Q <sub>gs</sub>        | Gate-Source Charge <sup>3,4</sup>              |   | ---  | 1.85 | ---  |       |
| Q <sub>gd</sub>        | Gate-Drain Charge <sup>3,4</sup>               |   | ---  | 6.8  | ---  |       |
| Td(on)                 | Turn-On Delay Time <sup>3,4</sup>              | V <sub>DD</sub> =15V, V <sub>GS</sub> =10V, R <sub>G</sub> =3.3Ω<br>I <sub>D</sub> =15A | ---  | 7.5  | ---  | ns    |
| T <sub>r</sub>         | Rise Time <sup>3,4</sup>                       |   | ---  | 14.5 | ---  |       |
| Td(off)                | Turn-Off Delay Time <sup>3,4</sup>             |   | ---  | 35.2 | ---  |       |
| T <sub>f</sub>         | Fall Time <sup>3,4</sup>                       |   | ---  | 9.6  | ---  |       |
| Ciss                   | Input Capacitance                              | V <sub>DS</sub> =25V, V <sub>GS</sub> =0V, F=1MHz                                       | ---  | 1160 | ---  | pF    |
| Coss                   | Output Capacitance                             |   | ---  | 200  | ---  |       |
| Crss                   | Reverse Transfer Capacitance                   |   | ---  | 180  | ---  |       |
| R <sub>g</sub>         | Gate resistance                                |   | V <sub>GS</sub> =0V, V <sub>DS</sub> =0V, F=1MHz | ---  | 2.5  |       |
| EAS                    | Single Pulse Avalanche Energy                  | V <sub>DD</sub> =25V, L=0.1mH, IAS=20A  | 20   | ---  | ---  | mJ    |
| IS                     | Continuous Source Current                      | V <sub>G</sub> =V <sub>D</sub> =0V, Force Current                                       | ---  | ---  | 80   | A     |
| ISM                    | Pulsed Source Current <sup>3</sup>             |   | ---  | ---  | 320  | A     |
| VSD                    | Diode Forward Voltage <sup>3</sup>             | V <sub>GS</sub> =0V, I <sub>S</sub> =1A, T <sub>J</sub> =25°C                           | ---  | ---  | 1    | V     |
| trr                    | Reverse Recovery Time                          | V <sub>GS</sub> =0V, I <sub>S</sub> =1A, di/dt=100A/μs T <sub>J</sub> =25°C             | ---  | ---  | ---  | ns    |
| Q <sub>rr</sub>        | Reverse Recovery Charge                        |   | ---  | ---  | ---  | nC    |



### Typical Characteristics

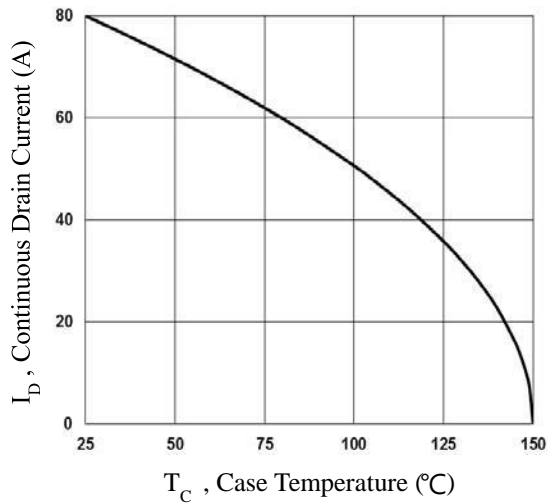


Fig.1 Continuous Drain Current vs. T<sub>C</sub>

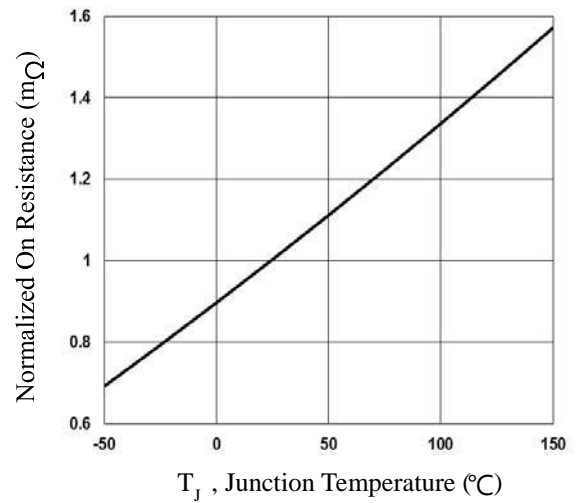


Fig.2 Normalized R<sub>DS(on)</sub> vs. T<sub>J</sub>

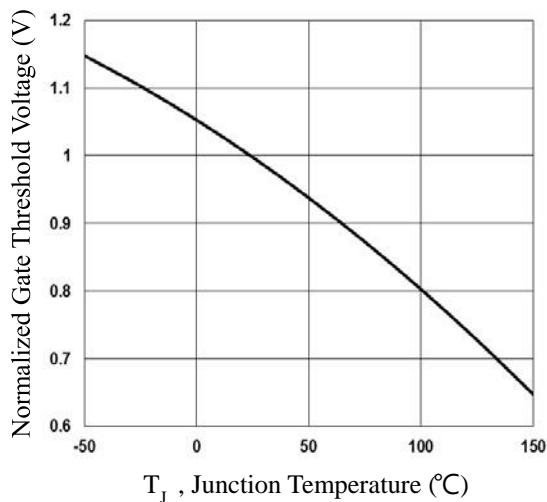


Fig.3 Normalized V<sub>th</sub> vs. T<sub>J</sub>

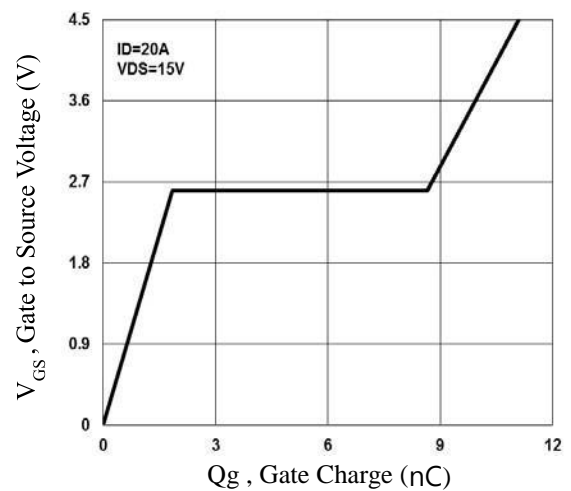


Fig.4 Gate Charge Waveform

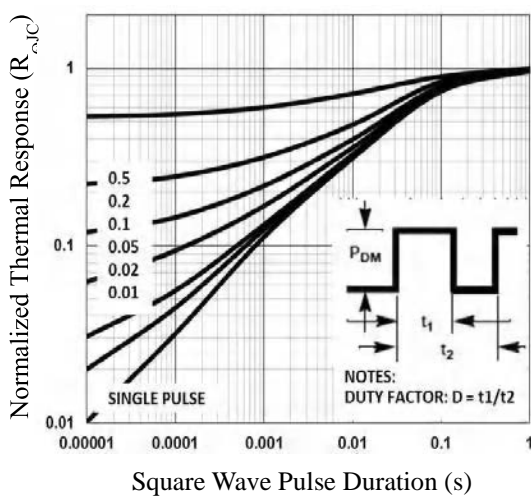


Fig.5 Normalized Transient Impedance

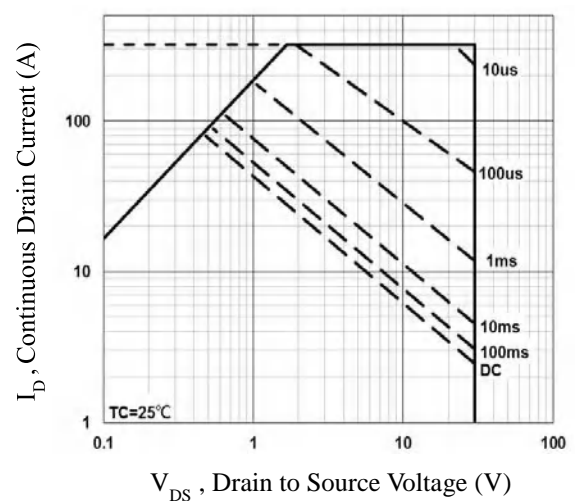


Fig.6 Maximum Safe Operation Area

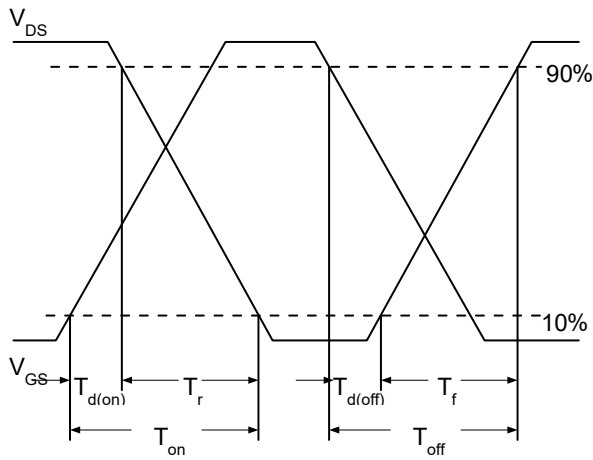


Fig.7 Switching Time Waveform

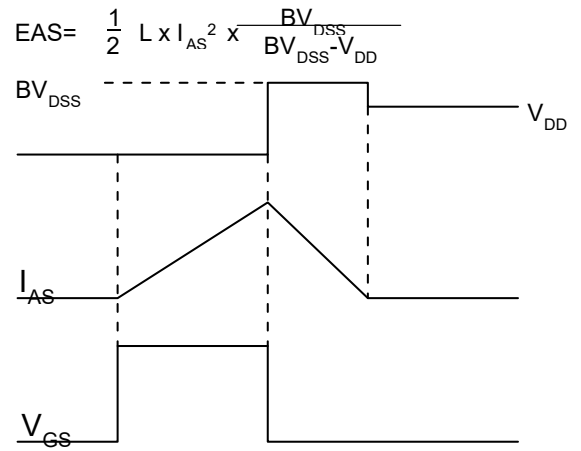
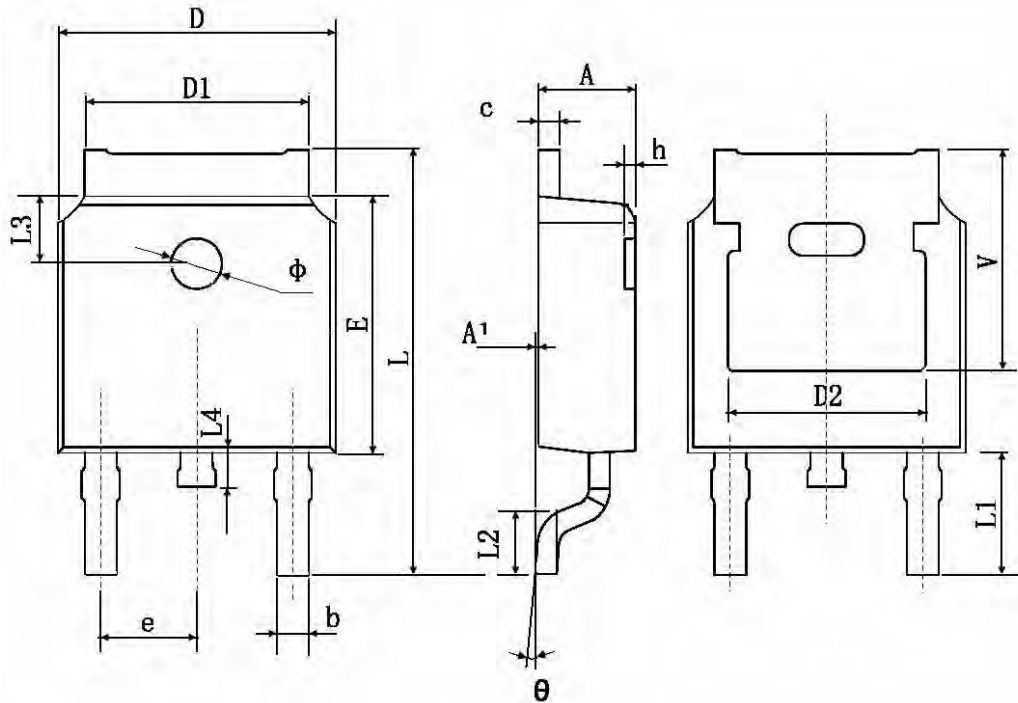


Fig.8 EAS Waveform



### TO-252-2L Package Information



| Symbol | Dimensions In Millimeters |        | Dimensions In Inches |       |
|--------|---------------------------|--------|----------------------|-------|
|        | Min.                      | Max.   | Min.                 | Max.  |
| A      | 2.200                     | 2.400  | 0.087                | 0.094 |
| A1     | 0.000                     | 0.127  | 0.000                | 0.005 |
| b      | 0.660                     | 0.860  | 0.026                | 0.034 |
| c      | 0.460                     | 0.580  | 0.018                | 0.023 |
| D      | 6.500                     | 6.700  | 0.256                | 0.264 |
| D1     | 5.100                     | 5.460  | 0.201                | 0.215 |
| D2     | 0.483 TYP.                |        | 0.190 TYP.           |       |
| E      | 6.000                     | 6.200  | 0.236                | 0.244 |
| e      | 2.186                     | 2.386  | 0.086                | 0.094 |
| L      | 9.800                     | 10.400 | 0.386                | 0.409 |
| L1     | 2.900 TYP.                |        | 0.114 TYP.           |       |
| L2     | 1.400                     | 1.700  | 0.055                | 0.067 |
| L3     | 1.600 TYP.                |        | 0.063 TYP.           |       |
| L4     | 0.600                     | 1.000  | 0.024                | 0.039 |
| Φ      | 1.100                     | 1.300  | 0.043                | 0.051 |
| θ      | 0°                        | 8°     | 0°                   | 8°    |
| h      | 0.000                     | 0.300  | 0.000                | 0.012 |
| V      | 5.350 TYP.                |        | 0.211 TYP.           |       |



### Attention

- Any and all HUA XUAN YANG ELECTRONICS products described or contained herein do not have specifications that can handle applications that require extremely high levels of reliability, such as life-support systems, aircraft's control systems, or other applications whose failure can be reasonably expected to result in serious physical and/or material damage. Consult with your HUA XUAN YANG ELECTRONICS representative nearest you before using any HUA XUAN YANG ELECTRONICS products described or contained herein in such applications.
- HUA XUAN YANG ELECTRONICS assumes no responsibility for equipment failures that result from using products at values that exceed, even momentarily, rated values (such as maximum ratings, operating condition ranges, or other parameters) listed in products specifications of any and all HUA XUAN YANG ELECTRONICS products described or contained herein.
- Specifications of any and all HUA XUAN YANG ELECTRONICS products described or contained herein stipulate the performance, characteristics, and functions of the described products in the independent state, and are not guarantees of the performance, characteristics, and functions of the described products as mounted in the customer's products or equipment. To verify symptoms and states that cannot be evaluated in an independent device, the customer should always evaluate and test devices mounted in the customer's products or equipment.
- HUA XUAN YANG ELECTRONICS CO.,LTD. strives to supply high-quality high-reliability products. However, any and all semiconductor products fail with some probability. It is possible that these probabilistic failures could give rise to accidents or events that could endanger human lives, that could give rise to smoke or fire, or that could cause damage to other property. When designing equipment, adopt safety measures so that these kinds of accidents or events cannot occur. Such measures include but are not limited to protective circuits and error prevention circuits for safe design, redundant design, and structural design.
- In the event that any or all HUA XUAN YANG ELECTRONICS products(including technical data, services) described or contained herein are controlled under any of applicable local export control laws and regulations, such products must not be exported without obtaining the export license from the authorities concerned in accordance with the above law.
- No part of this publication may be reproduced or transmitted in any form or by any means, electronic or mechanical, including photocopying and recording, or any information storage or retrieval system, or otherwise, without the prior written permission of HUA XUAN YANG ELECTRONICS CO.,LTD.
- Information (including circuit diagrams and circuit parameters) herein is for example only ; it is not guaranteed for volume production. HUA XUAN YANG ELECTRONICS believes information herein is accurate and reliable, but no guarantees are made or implied regarding its use or any infringements of intellectual property rights or other rights of third parties.
- Any and all information described or contained herein are subject to change without notice due to product/technology improvement, etc. When designing equipment, refer to the "Delivery Specification" for the HUA XUAN YANG ELECTRONICS product that you intend to use.

## X-ON Electronics

Largest Supplier of Electrical and Electronic Components

*Click to view similar products for [MOSFET](#) category:*

*Click to view products by [HXY MOS](#) manufacturer:*

Other Similar products are found below :

[IRFD120](#) [JANTX2N5237](#) [BUK455-60A/B](#) [MIC4420CM-TR](#) [VN1206L](#) [NDP4060](#) [SI4482DY](#) [IPS70R2K0CEAKMA1](#) [SQD23N06-31L-GE3](#)  
[TK16J60W,S1VQ\(O](#) [2SK2614\(TE16L1,Q\)](#) [DMN1017UCP3-7](#) [DMN1053UCP4-7](#) [SQJ469EP-T1-GE3](#) [NTE2384](#) [DMC2700UDMQ-7](#)  
[DMN2080UCB4-7](#) [DMN61D9UWQ-13](#) [US6M2GTR](#) [DMN31D5UDJ-7](#) [DMP22D4UFO-7B](#) [DMN1006UCA6-7](#) [DMN16M9UCA6-7](#)  
[STF5N65M6](#) [IRF40H233XTMA1](#) [STU5N65M6](#) [DMN6022SSD-13](#) [DMN13M9UCA6-7](#) [DMTH10H4M6SPS-13](#) [DMN2990UFB-7B](#)  
[IPB80P04P405ATMA2](#) [2N7002W-G](#) [MCAC30N06Y-TP](#) [MCQ7328-TP](#) [NTMC083NP10M5L](#) [BXP7N65D](#) [BXP4N65F](#) [AOL1454G](#)  
[WMJ80N60C4](#) [BXP2N20L](#) [BXP2N65D](#) [BXT1150N10J](#) [BXT1700P06M](#) [TSM60NB380CP](#) [ROG](#) [RQ7L055BGTGR](#) [DMNH15H110SK3-13](#)  
[SLF10N65ABV2](#) [BSO203SP](#) [BSO211P](#) [IPA60R230P6](#)