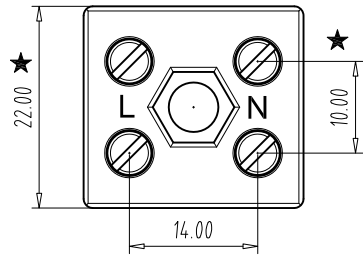


REV	E.C.N NO.	CONTENT	CHK	DATE
V0.0		ORIGINAL	WG	13.10.26
V0.1		TOLERANCE ACCORDING TO DIN 40680	WG	14.03.18



技术参数/technical data :

额定电压/Rated voltage: 750V (VDE,CE,CQC) , 300V (UL,CUL,CSA)

额定电流/Rated current: 41A (VDE,CE) , 30A (UL,CUL,CSA)

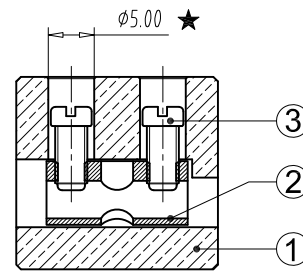
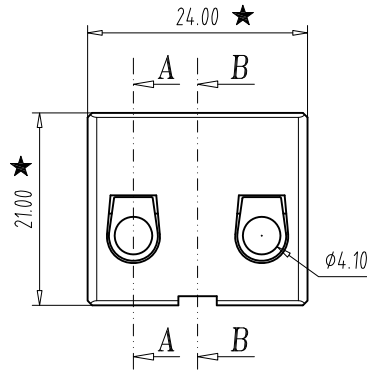
接线容量/Wire range: 1.5mm²-6mm² Max10mm² Sol , 20-10AWG

剥线长度/Strip length: 6.0-7.0mm

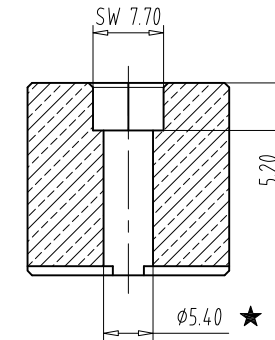
螺纹及扭力/Srew&torque: M3.5 screw ; Torque 0.8Nm /7.2lb-in

工作温度/Operating temp. : -40°C ~ +200°C

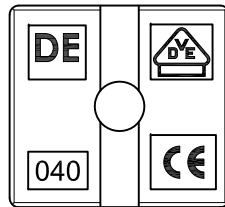
RoHS compliance



Section A--A



Section B--B



3	Screw	TLS00057	4	Steel	Zn plated
2	Block	TL011B0001	2	Brass	Ni plated
1	HOUSING	TLB34A1002	1	Porcelain	
ITEM	NAME OF PART	NO. OF PART	Q'TY	MATERIAL	NOTE
DWG.	WG	DATE	13.10.26	UNITS	MM
CHK.		DATE		SCALE	1:1
APP.		DATE			
			NAME		
			DWGNO.	DESTB-0402	

Nominal dimension range in mm



⊥		≡		-		//	
over 0	over 4	over 6	over 8	over 10	over 13	over 16	over 20
to 4	to 6	to 8	to 10	to 13	to 16	to 20	to 25
±0.15	±0.20	±0.25	±0.3	±0.35	±0.40	±0.45	±0.50
±0.55	±0.60	±0.70	±0.90	±1.20	±1.60	±2.00	±2.50
±3.00	±4.20	0.3	0.5	0.4	0.4	0.6	0.9

X-ON Electronics

Largest Supplier of Electrical and Electronic Components

Click to view similar products for [hylec manufacturer](#):

Other Similar products are found below :

[LN167001](#) [50.625 PA/3X7](#) [50.620 PA/R](#) [DESTB-1003](#) [THB.406.A1G](#) [THB.387.A4A.R](#) [K150-1032-00](#) [GHG9601955R0004](#) [K151-1032-00](#)
[HYKS-07612PP](#) [THB.382.A1A-KIT](#) [THB.390.A1AKIT](#) [THK.404.X2A00-F](#) [50.216 ES](#) [50.616M/EMVDL-F](#) [50.625 ES](#) [PA244SKIT](#)
[THB.387.A3A](#) [THB.405.A2A](#) [50.220 M-F](#) [HY435/12 FV](#) [THB110A6B-F](#) [50.216 M-F](#) [THB.387.B5A](#) [5625////1121](#) [THB.380.3ASSY](#)
[THB.405.A2G](#) [THA.209.A1A](#) [DESTB-1002](#) [THB.384.A1A](#) [K257-1012-00](#) [6000302CC](#) [TTK25BK-SD-F](#) [TTK20GY-SD-F](#) [DESTB-0403](#)
[THB.384.B1A](#) [50.625 PA/RSW](#) [HY508/3 V/3F](#) [5665/221](#) [THB.387.D4A](#) [THB.387.B4A](#) [THR.405.S5A](#) [THB.381.M2A](#) [THB.387.A5A](#)
[THB.387.C5A](#) [THB.387.D3A](#) [50.625 M/EMVDL-F](#) [THK.200.3T](#) [THB.381.A2A](#) [K160-1040-00](#)