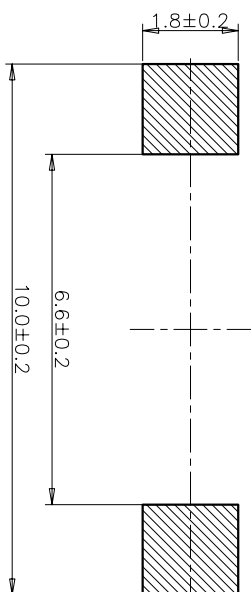


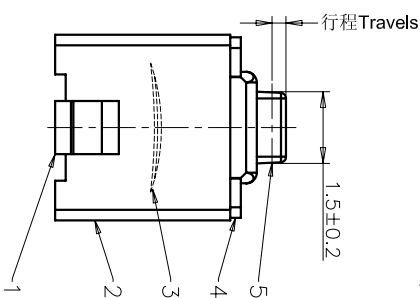
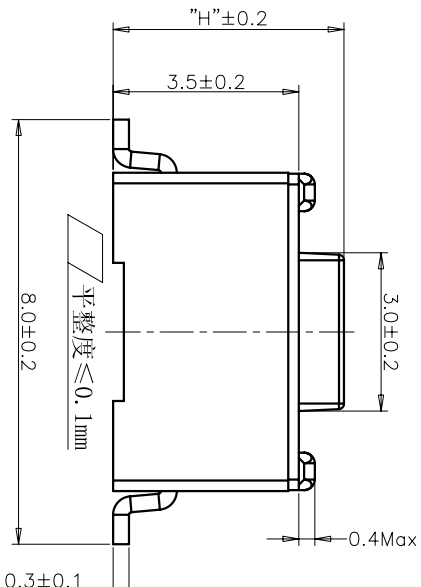
CIRCUIT DIAGRAM  
回路图



RECOMMENDED P.C.B. LAYOUT  
安装尺寸图

规格 Specifications

额定负荷 Rating	DC 12V/50mA
接触电阻 Contact Resistance	100mΩ max.
绝缘电阻 Insulation resistance	DC100V 60S 100MΩ min.
抗电强度 Dielectric strength	AC250V(50~60HZ) 60S min.
操作力 Operation force	160±30gf
寿命试验 Operating Life	150,000 cycles
行程 Travels	0.25±0.1mm



PRODUCT NO.: 1TS002B\*\*\*-\*\*\*A2 - CT

- 轻触开关
- 3X6系列
- 外形:
- A=插脚
  - B=贴片
  - C=贴片带柱
  - E=贴片2.5高
  - K=贴片带柱8.8
  - L=贴片10.2
- 按钮颜色:
- 底座颜色:
- 盖板颜色:
- 操作力度:
- 130=130gf
  - 160=160gf
  - 180=180gf
  - 220=220gf
  - 250=250gf
  - 260=260gf
  - 300=300gf
- 初始颜色
- 则不启用
- 手感:
- 0=常规
  - 1=大手感
  - 2=小手感
  - 3=特殊手感
- 材料:
- 0=PA66
  - 1=LCP+PPA
  - 2=LCP
  - 3=LCP+PPA(双弹片)
  - 4=新增材质
- 依次增加
- 产品高度(H):
- 430=4.3mm
  - 500=5.0mm
- 非编带
- 编带

ITEM	PART NAME	QUANTITY	MATERIAL	FINISH
5	ACTUATOR	1	LCP	WHITE
4	COVER	1	STAINLESS STEEL	NATURAL
3	DOME	1	STAINLESS STEEL	Ag-PLATED
2	HOUSING	1	PPA	WHITE
1	TERMINAL	1	BRASS	Ag-PLATED

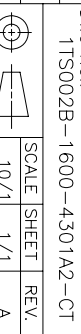
  

UNITS	MM	FINISH
X. ± 0.3	X' ± 3'	.XXX' ± 0.5'
X ± 0.2	X' ± 2'	.XX ± 1'
.XX ± 0.1	.XX' ± 1'	.XX ± 0.5'
.XXX ± 0.05	.XXX' ± 0.5'	.XXX ± 0.05

NAME(INTENDED USE)	3X6 SMT SERIES TACT SWITCH	HON YUAN
HON YUAN PRECISION IND. CO.,LTD.	SHENZHEN, CHINA, R.O.C.	
TITLE:	PRODUCT DRAWING	
DWG NO.:	1TS002B-1600-4301A2-CT	
CHKD:	M.H.Li 2012/2/12	
DR:	WP Lu 2012/2/12	

THESE DRAWINGS AND SPECIFICATIONS ARE THE PROPERTY OF HON YUAN PRECISION IND. CO., LTD. AND SHALL NOT BE REPRODUCED, COPIED OR USED IN ANY MANNER WITHOUT THE PRIOR WRITTEN CONSENT OF HON YUAN PRECISION IND. CO., LTD.



SCALE	SHEET	REV.
10/1	1/1	A

## X-ON Electronics

Largest Supplier of Electrical and Electronic Components

*Click to view similar products for [Tactile Switches](#) category:*

*Click to view products by [HYP](#) manufacturer:*

Other Similar products are found below :

[6407-250V-25273P](#) [ADTSA62NV](#) [B3F-3123](#) [1977177-8](#) [1977266-1](#) [ADTSA63NV](#) [ADTSM21NSVTR](#) [ADTSM25RVTR](#) [ADTSM32NVTR](#)  
[ADTSMW64RV](#) [1977120-6](#) [FSMRA4JHA04](#) [GS4.70F300QP](#) [KSC241J SP DELTA LFS](#) [3FTL600RAS](#) [3FTL640RAS](#) [6407-250V-25343P](#)  
[ADTSM31NVTR](#) [2-1977120-7](#) [TSJW-5.2-260-TR](#) [Y651050400P](#) [KMT011MNGJLHS](#) [70-201.0](#) [ADTSG648NV](#) [ADTSM62KSVTR](#)  
[ADTSM648NV](#) [95C06E3RAT](#) [3ATH9Q](#) [FSMRA8JHA04](#) [HARS0073](#) [Y33R411N9FPLFT](#) [Y33R51139FPLFT](#) [Y31C01402FPLFS](#)  
[PTS645SK50SMTR92](#) [ADTSM32NVB](#) [KMS233GPWTLFG](#) [Y78B64124FP](#) [Y31CJ244KFP LFS](#) [Y96D113G0FP LFS](#) [Y33A812C5FP LFT](#)  
[Y56B2D120FP LFS](#) [Y31C5144KFP LFS](#) [PTS645 DVM83-BN125-2 LFS](#) [B3W 1000G](#) [KSC621G OL LFS](#) [B3F 1002C](#) [B3F 0047H](#) [B3W](#)  
[1002C](#) [B3F 5001G](#) [B3W 1100C](#)