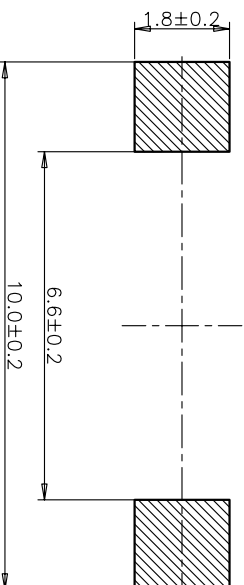
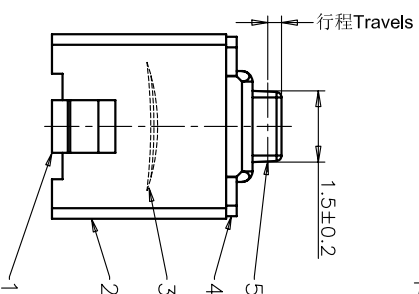
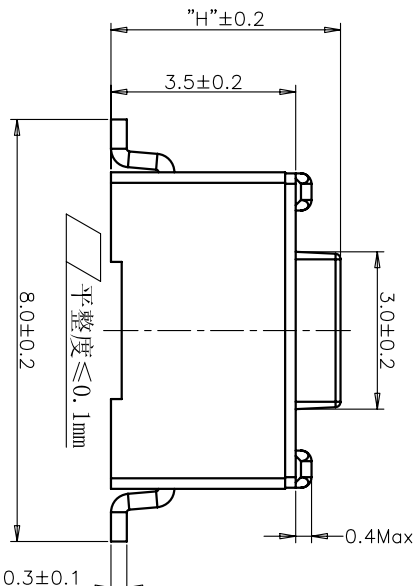


CIRCUIT DIAGRAM  
回路图



RECOMMENDED P.C.B. LAYOUT  
安装尺寸图



| REV | ECN NO.    | APPD    |
|-----|------------|---------|
| A   | HC-11-0025 | PRI0J0M |
| B   | HC-11-0061 | PRI0J0M |
| C   | HC-12-0060 | PRI0J0M |
| D   | HC-15-0062 | PRI0J0M |

规格 Specifications

|                            |                          |               |
|----------------------------|--------------------------|---------------|
| 额定负荷 Rating                | DC 12V/50mA              |               |
| 接触电阻 Contact Resistance    | 100mΩ max.               |               |
| 绝缘电阻 Insulation resistance | DC100V 60S 100MΩ min.    |               |
| 抗电强度 Dielectric strength   | AC250V(50-60HZ) 60S min. |               |
| 操作力 Operation force        | ≤180±30gf                | ≤300±50gf     |
| 寿命试验 Operating Life        | 50,000 cycles            | 30,000 cycles |
| 行程 Travels                 | 0.25±0.1mm               |               |

PRODUCT NO.: 1TS002\*\*\*\*\*-CT

轻触开关  
3X6系列  
外形:  
A=插脚  
B=贴片  
C=贴片带柱  
E=贴片2.5高  
K=贴片带柱8.8  
L=贴片10.2

按钮颜色:  
底座颜色:  
盖板颜色:

操作力度:  
130=130±20gf  
160=160±30gf  
180=180±30gf  
220=220±40gf  
250=250±50gf  
300=300±50gf

初始颜色  
则不启用

手感:  
0=常规  
1=大手感  
2=小手感  
3=特殊手感

产品高度(H):  
430=4.3mm  
500=5.0mm

材质:  
0=PA66  
1=LCP+PPA  
2=LCP  
3=PA66+PPA  
4=新增材质  
依次增加

非编带, 不启用

| ITEM | PART NAME | QUANTITY | MATERIAL        | FINISH          |
|------|-----------|----------|-----------------|-----------------|
| 5    | ACTUATOR  | 1        | PA66            | WHITE           |
| 4    | COVER     | 1        | STAINLESS STEEL | NATURAL         |
| 3    | DOME      | 1        | STAINLESS STEEL | Ag-PLATED       |
| 2    | HOUSING   | 1        | PA66            | WHITE           |
| 1    | TERMINAL  | 1        | BRASS           | Ag-PLATED/0.2μm |

| X. ± 0.3    | X' ± 3'      | UNITS  | MM |
|-------------|--------------|--------|----|
| .X ± 0.2    | X' ± 2'      | MATL   |    |
| .XX ± 0.1   | .XX' ± 1'    | FINISH |    |
| .XXX ± 0.05 | .XXX' ± 0.5' |        |    |

| NAME(INTENDED USE)         | HON YUAN   |
|----------------------------|--|
| 3X6 SMT SERIES TACT SWITCH | HON YUAN PRECISION IND. CO.,LTD.<br>SHENZHEN, CHINA. |
| PART NO.(INTENDED USE)     | PRODUCT DRAWING                                      |
| 1TS002B****-*****0         |  |
| APPD: ZO 2015/11/13        | DWG NO.: 1TS002B                                     |
| CHKD: M.H.LI 2015/11/13    |  |
| DR: WP.LU 2015/11/12       |  |

| SCALE | SHEET | REV. |
|-------|-------|------|
| 10/1  | 1/4   | D    |

THESE DRAWINGS AND SPECIFICATIONS ARE THE PROPERTY OF HON YUAN PRECISION IND. CO., LTD. AND SHALL NOT BE REPRODUCED, COPIED OR USED IN ANY MANNER WITHOUT PERMISSION IN WRITING FROM HON YUAN PRECISION IND. CO., LTD.

## X-ON Electronics

Largest Supplier of Electrical and Electronic Components

*Click to view similar products for [Tactile Switches](#) category:*

*Click to view products by [HYP](#) manufacturer:*

Other Similar products are found below :

[5GTH92001](#) [5GTH9202242](#) [6407-250V-25273P](#) [ADTSA62NV](#) [ADTSA62RV](#) [B3F-3123](#) [1977177-8](#) [1977266-1](#) [ADTSA63NV](#)  
[ADTSM21NSVTR](#) [ADTSM25RVTR](#) [ADTSM32NVTR](#) [ADTSMW64RV](#) [FSMRA4JHA04](#) [GS4.70F300QP](#) [3ESH9R](#) [KSC241J](#) [SP DELTA](#)  
[LFS](#) [3FTL600RAS](#) [3FTL640RAS](#) [Y96K132V0FPLFS](#) [5GTH9658222](#) [ADTSM31NVTR](#) [2-1977120-7](#) [TSJW-5.2-260-TR](#)  
[KMT011MNGJLHS](#) [70-201.0](#) [ADTSG648NV](#) [ADTSM62KSVTR](#) [ADTSM648NV](#) [95C06E3RAT](#) [5GTH96561](#) [3ATH9Q](#) [FSM4JSMLXTR](#)  
[FSM4JSMXL](#) [FSMRA8JHA04](#) [HARS0073](#) [Y97HS12A5RAFP](#) [Y97BT23B2HAFP](#) [Y33R411N9FPLFT](#) [Y31C01402FPLFS](#)  
[PTS645SK50SMTR92](#) [ADTSM32NVB](#) [KMS233GPWTLFG](#) [Y78B42324FP](#) [Y33R21116FPLFT](#) [Y31B43131FPLFG](#) [Y78B64124FP](#)  
[Y71243251FP](#) [Y33R31119FPLFT](#) [Y97HS12A5TAFP](#)