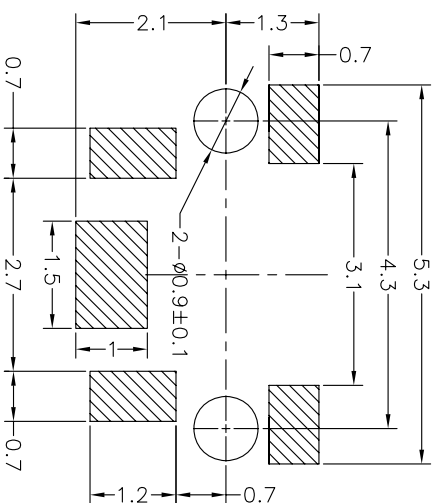
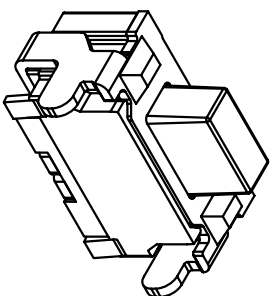
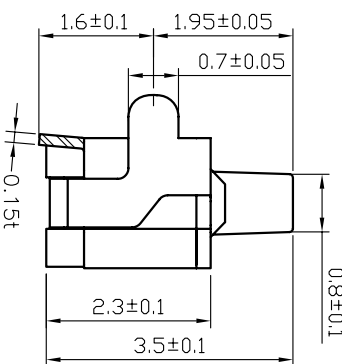
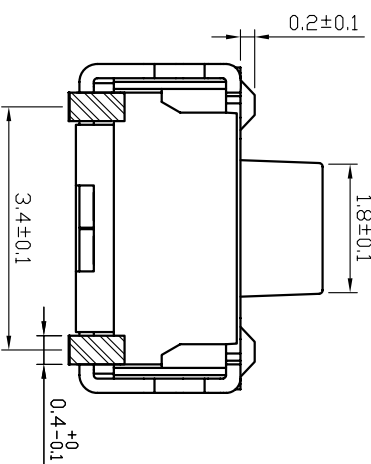


CIRCUIT DIAGRAM
回路图



RECOMMENDED P.C.B. LAYOUT
安装尺寸图



规格 Specifications

| | | | |
|----------------------------|--------------------------|---------------|---------------|
| 额定负荷 Rating | DC 12V/50mA | | |
| 接触电阻 Contact Resistance | 100mΩ max. | | |
| 绝缘电阻 Insulation resistance | DC100V 60S 100MΩ min. | | |
| 抗电强度 Dielectric strength | AC250V(50~60HZ) 60S min. | | |
| 操作力 Operation force | ≤160±30gf | 180±30gf | 250±50gf |
| 寿命试验 Operating Life | 100,000 cycles | 50,000 cycles | 15,000 cycles |
| 行程 Travels | 0.2±0.1mm | | |

PRODUCT NO. : 1TS003A***-***-***B - CT

- 轻触开关
- 2X4系列
- 外形:
- A=单层全包
- B=单层带柱
- C=双层全包
- 按钮颜色:
- 底座颜色:
- 盖板颜色:
- 操作力度:
- 140=140gf
- 160=160gf
- 180=180gf
- 250=250gf
- 初始颜色
- 则不启用
- 产品高度(H):
- 350=3.5mm
- 材料:
- 0=初始材质
- 1=新增材质
- 依次增加
- 编织带
- 非编织带, 不启用
- 手感:
- 0=常规
- 1=大手感
- 2=小手感
- 3=特殊手感

| ITEM | PART NAME | QUANTITY | MATERIAL | FINISH |
|------|-----------|----------|-----------------|-----------|
| 5 | ACTUATOR | 1 | LCP | BLACK |
| 4 | COVER | 1 | BRASS | Ag-PLATED |
| 3 | DOME | 2 | STAINLESS STEEL | Ag-PLATED |
| 2 | HOUSING | 1 | LCP | BLACK |
| 1 | TERMINAL | 2 | BRASS | Ag-PLATED |

| X: ± | 0.3 | X: ± | 3 | UNITS | MM |
|--------|------|--------|-----|--------|----|
| X ± | 0.2 | X: ± | 2 | MAT'L | |
| .XX ± | 0.1 | .XX ± | 1 | FINISH | |
| .XXX ± | 0.05 | .XXX ± | 0.5 | | |

| | | |
|------------------------|------------------------|----------------------------------|
| NAME(INTENDED USE) | 2X4 SERIES TACT SWITCH | HON YUAN |
| PART NO.(INTENDED USE) | 1TS003A***-***-***0B | HON YUAN PRECISION IND. CO.,LTD. |
| APPD: | ZD 2017-1-12 | SHENZHEN, CHINA. |
| CHKD: | LI 2017-1-12 | TITLE: PRODUCT DRAWING |
| DR: | S.LLI 2017-1-12 | DWG NO.: 1TS003A |

| | | |
|-------|-------|------|
| SCALE | SHEET | REV. |
| 15/1 | 1/1 | B |

THESE DIMENSIONS AND SPECIFICATIONS ARE THE PROPERTY OF HON YUAN PRECISION IND. CO., LTD. AND SHALL NOT BE REPRODUCED, COPIED OR USED IN ANY MANNER WITHOUT THE WRITTEN CONSENT OF HON YUAN PRECISION IND. CO., LTD.

X-ON Electronics

Largest Supplier of Electrical and Electronic Components

Click to view similar products for [Tactile Switches](#) category:

Click to view products by [HYP](#) manufacturer:

Other Similar products are found below :

[5GTH92001](#) [5GTH9202242](#) [6407-250V-25273P](#) [ADTSA62NV](#) [ADTSA62RV](#) [B3F-3123](#) [1977177-8](#) [1977266-1](#) [ADTSA63NV](#)
[ADTSM21NSVTR](#) [ADTSM25RVTR](#) [ADTSM32NVTR](#) [ADTSMW64RV](#) [FSMRA4JHA04](#) [GS4.70F300QP](#) [3ESH9R](#) [KSC241J](#) [SP DELTA](#)
[LFS](#) [3FTL600RAS](#) [3FTL640RAS](#) [Y96K132V0FPLFS](#) [5GTH9658222](#) [ADTSM31NVTR](#) [EVQ-P1D05K](#) [2-1977120-7](#) [TSJW-5.2-260-TR](#)
[KMT011MNGJLHS](#) [70-201.0](#) [ADTSG648NV](#) [ADTSM62KSVTR](#) [ADTSM648NV](#) [95C06E3RAT](#) [5GTH96561](#) [3ATH9Q](#) [FSM4JSMLXTR](#)
[FSM4JSMXL](#) [FSMRA8JHA04](#) [HARS0073](#) [Y97HS12A5RAFP](#) [Y97BT23B2HAFP](#) [Y33R411N9FPLFT](#) [Y31C01402FPLFS](#)
[PTS645SK50SMTR92](#) [ADTSM32NVB](#) [KMS233GPWTLFG](#) [Y78B42324FP](#) [Y33R21116FPLFT](#) [Y31B43131FPLFG](#) [Y78B64124FP](#)
[Y71243251FP](#) [Y33R31119FPLFT](#)