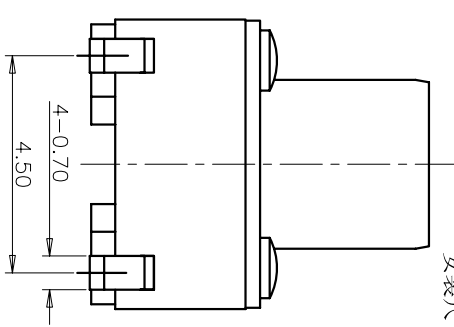
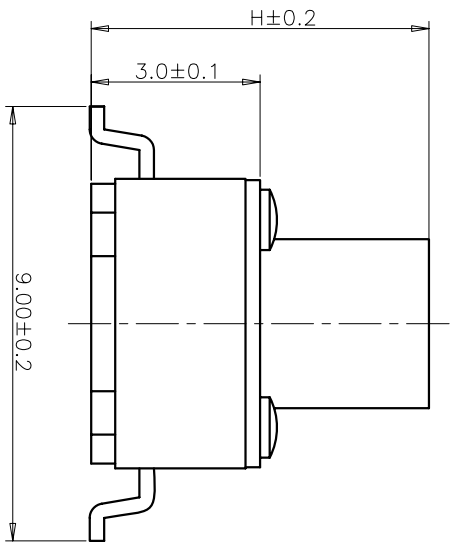
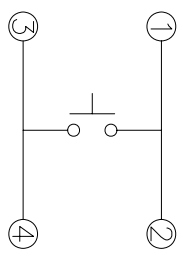


规格 Specifications

| | |
|----------------------------|--------------------------|
| 额定负荷 Rating | DC 12V/50mA |
| 接触电阻 Contact Resistance | 100mΩ max. |
| 绝缘电阻 Insulation resistance | DC100V 60S 100MΩ min. |
| 抗电强度 Dielectric strength | AC250V(50~60HZ) 60S min. |
| 操作力 Operation force | 260±50gf |
| 寿命试验 Operating Life | 100,000 cycles |
| 行程 Travels | 0.25±0.1mm |



安装尺寸图



回路图
CIRCUIT DIAGRAM

| ITEM | PART NAME | QUANTITY | MATERIAL | FINISH |
|------|-----------|----------|--------------------|-----------|
| 5 | COVER | 1 | BRASS | Ni-PLATED |
| 4 | ACTUATOR | 1 | PPA | BLACK |
| 3 | DOME | 1 | Stainless Steel/Ag | Ag-PLATED |
| 2 | TERMINAL | 1 | BRASS | Ag-PLATED |
| 1 | HOUSING | 1 | PPA | BLACK |

| UNITS | MM | NAME(INTENDED USE) | FINISH |
|-------------|--------------|--------------------|--------|
| X. ± 0.3 | X' ± 3' | 6X6 SERIES | MAT'L |
| X ± 0.2 | X' ± 2' | TACT SWITCH | |
| .XX ± 0.1 | .XX' ± 1' | | |
| .XXX ± 0.05 | .XXX' ± 0.5' | | |

PRODUCT NO.: 1TS005F***-***0-***0A2 - CT

轻触开关
系列:
外形:
按钮颜色:
底座颜色:
盖板颜色:
初始颜色, 则不启用

操作力度:
120=120gf
160=160gf
200=200gf
260=260gf

手感:
0=常规(薄片)

材料:
0=初始材质
1=新增材质
依次增加

产品高度(H):
430=4.3mm
500=5.0mm
600=6.0mm
700=7.0mm
800=8.0mm
900=9.0mm

编带
非编带, 不启用

| UNITS | MM | NAME(INTENDED USE) | FINISH |
|-------------|--------------|--------------------|--------|
| X. ± 0.3 | X' ± 3' | 6X6 SERIES | MAT'L |
| X ± 0.2 | X' ± 2' | TACT SWITCH | |
| .XX ± 0.1 | .XX' ± 1' | | |
| .XXX ± 0.05 | .XXX' ± 0.5' | | |

| UNITS | MM | NAME(INTENDED USE) | FINISH |
|-------------|--------------|--------------------|--------|
| X. ± 0.3 | X' ± 3' | 6X6 SERIES | MAT'L |
| X ± 0.2 | X' ± 2' | TACT SWITCH | |
| .XX ± 0.1 | .XX' ± 1' | | |
| .XXX ± 0.05 | .XXX' ± 0.5' | | |

| REV | ECN NO. | APPD |
|-----|------------|--------|
| A | HS-18-0041 | PROJOM |

| | |
|----------|------------------------|
| DWG NO.: | 1TS005F-2600-8000A2-CT |
| CHKD: | S.L.Li 2018.3.31 |
| DR: | Y.Y.Chen 2018.3.31 |
| SCALE | 10/1 |
| SHEET | 1/2 |
| REV. | A |

| | |
|----------|------------------------|
| DWG NO.: | 1TS005F-2600-8000A2-CT |
| CHKD: | S.L.Li 2018.3.31 |
| DR: | Y.Y.Chen 2018.3.31 |
| SCALE | 10/1 |
| SHEET | 1/2 |
| REV. | A |

X-ON Electronics

Largest Supplier of Electrical and Electronic Components

Click to view similar products for [Tactile Switches](#) category:

Click to view products by [HYP](#) manufacturer:

Other Similar products are found below :

[6407-250V-25273P](#) [ADTSA62NV](#) [B3F-3123](#) [1977177-8](#) [1977266-1](#) [ADTSA63NV](#) [ADTSM21NSVTR](#) [ADTSM25RVTR](#) [ADTSM32NVTR](#)
[ADTSMW64RV](#) [1977120-6](#) [FSMRA4JHA04](#) [GS4.70F300QP](#) [KSC241J SP DELTA LFS](#) [3FTL600RAS](#) [3FTL640RAS](#) [6407-250V-25343P](#)
[ADTSM31NVTR](#) [2-1977120-7](#) [TSJW-5.2-260-TR](#) [Y651050400P](#) [KMT011MNGJLHS](#) [70-201.0](#) [ADTSG648NV](#) [ADTSM62KSVTR](#)
[ADTSM648NV](#) [95C06E3RAT](#) [3ATH9Q](#) [FSMRA8JHA04](#) [HARS0073](#) [Y33R411N9FPLFT](#) [Y33R51139FPLFT](#) [Y31C01402FPLFS](#)
[PTS645SK50SMTR92](#) [ADTSM32NVB](#) [KMS233GPWTLFG](#) [Y78B64124FP](#) [Y31CJ244KFP LFS](#) [Y96D113G0FP LFS](#) [Y33A812C5FP LFT](#)
[Y56B2D120FP LFS](#) [Y31C5144KFP LFS](#) [PTS645 DVM83-BN125-2 LFS](#) [B3W 1000G](#) [KSC621G OL LFS](#) [B3F 1002C](#) [B3F 0047H](#) [B3W](#)
[1002C](#) [B3F 5001G](#) [B3W 1100C](#)