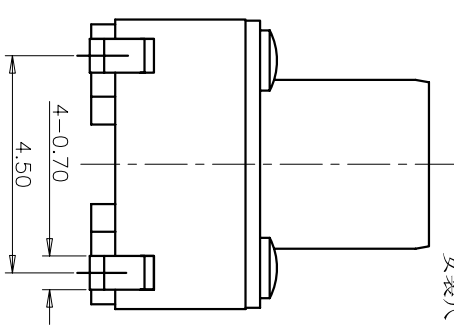
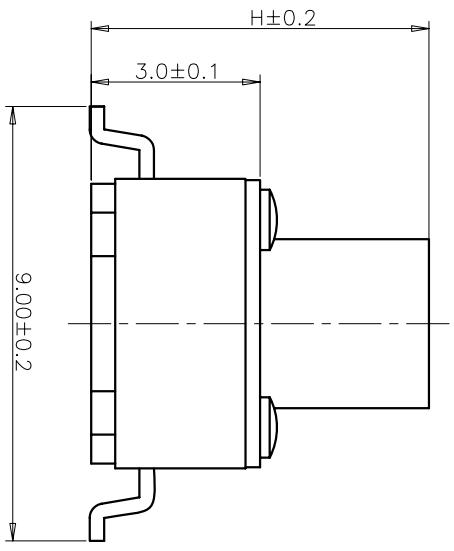


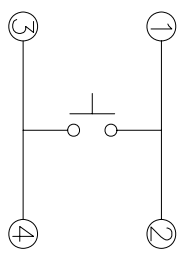
RECOMMENDED P.C.B. LAYOUT

规格 Specifications

额定负荷 Rating	DC 12V/50mA
接触电阻 Contact Resistance	100mΩ max.
绝缘电阻 Insulation resistance	DC100V 60S 100MΩ min.
抗电强度 Dielectric strength	AC250V(50~60HZ) 60S min.
操作力 Operation force	260±50gf
寿命试验 Operating Life	100,000 cycles
行程 Travels	0.25±0.1mm



安装尺寸图



CIRCUIT DIAGRAM
回路图

ITEM	PART NAME	QUANTITY	MATERIAL	FINISH
5	COVER	1	BRASS	Ni-PLATED
4	ACTUATOR	1	PPA	BLACK
3	DOME	1	Stainless Steel/Ag	Ag-PLATED
2	TERMINAL	1	BRASS	Ag-PLATED
1	HOUSING	1	PPA	BLACK

UNITS	MM	NAME(INTENDED USE)	FINISH
X. ± 0.3	X' ± 3'	6X6 SERIES	HON YUAN HON YUAN PRECISION IND. CO.,LTD. SHENZHEN, CHINA.
X ± 0.2	X' ± 2'	TACT SWITCH	
.XX ± 0.1	.XX' ± 1'	PART NO.(INTENDED USE)	TITLE: PRODUCT DRAWING
.XXX ± 0.05	.XXX' ± 0.5'	1TS005F-2600-9000A2	DWG NO.: 1TS005F-2600-9000A2-CT

APPD:	CHKD:	DR:
W.P.Lu 2018.3.31	S.L.Li 2018.3.31	Y.Y.Chen 2018.3.31

SCALE	SHEET	REV.
10/1	1/2	A

PRODUCT NO.: 1TS005F***-***0-***0A2 - CT

- 接触开关
- 系列
- 外形
- 按钮颜色:
- 底座颜色:
- 盖板颜色:
- 初始颜色, 则不启用
- 操作力度:
 - 120=120gf
 - 160=160gf
 - 200=200gf
 - 260=260gf
- 手感:
 - 0=常规(薄片)
- 材料:
 - 0=初始材质
 - 1=新增材质
 - 依次增加
- 产品高度(H):
 - 430=4.3mm
 - 500=5.0mm
 - 600=6.0mm
 - 700=7.0mm
 - 800=8.0mm
 - 900=9.0mm
- 非编带
- 编带, 不启用

THESE DRAWINGS AND SPECIFICATIONS ARE THE PROPERTY OF HON YUAN PRECISION IND. CO., LTD. AND SHALL NOT BE REPRODUCED, COPIED OR USED IN ANY MANNER WITHOUT THE PRIOR WRITTEN CONSENT OF HON YUAN

X-ON Electronics

Largest Supplier of Electrical and Electronic Components

Click to view similar products for [Tactile Switches](#) category:

Click to view products by [HYP](#) manufacturer:

Other Similar products are found below :

[6407-250V-25273P](#) [ADTSA62NV](#) [B3F-3123](#) [1977177-8](#) [1977266-1](#) [ADTSA63NV](#) [ADTSM21NSVTR](#) [ADTSM25RVTR](#) [ADTSM32NVTR](#)
[ADTSMW64RV](#) [1977120-6](#) [FSMRA4JHA04](#) [GS4.70F300QP](#) [KSC241J SP DELTA LFS](#) [3FTL600RAS](#) [3FTL640RAS](#) [6407-250V-25343P](#)
[ADTSM31NVTR](#) [2-1977120-7](#) [TSJW-5.2-260-TR](#) [Y651050400P](#) [KMT011MNGJLHS](#) [70-201.0](#) [ADTSG648NV](#) [ADTSM62KSVTR](#)
[ADTSM648NV](#) [95C06E3RAT](#) [3ATH9Q](#) [FSMRA8JHA04](#) [HARS0073](#) [Y33R411N9FPLFT](#) [Y33R51139FPLFT](#) [Y31C01402FPLFS](#)
[PTS645SK50SMTR92](#) [ADTSM32NVB](#) [KMS233GPWTLFG](#) [Y78B64124FP](#) [Y31CJ244KFP LFS](#) [Y96D113G0FP LFS](#) [Y33A812C5FP LFT](#)
[Y56B2D120FP LFS](#) [Y31C5144KFP LFS](#) [PTS645 DVM83-BN125-2 LFS](#) [B3W 1000G](#) [KSC621G OL LFS](#) [B3F 1002C](#) [B3F 0047H](#) [B3W](#)
[1002C](#) [B3F 5001G](#) [B3W 1100C](#)