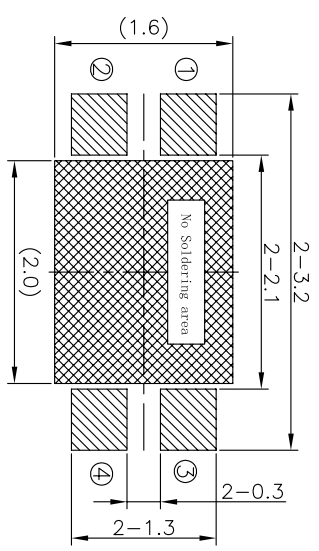
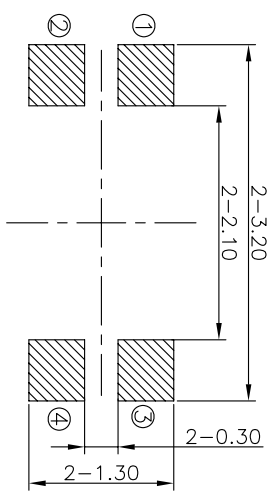
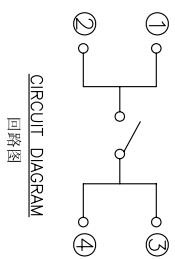
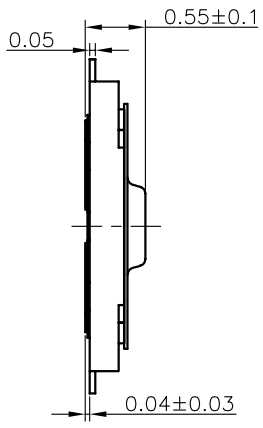
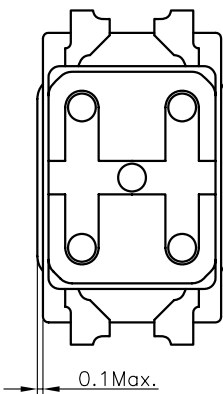
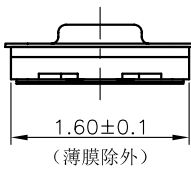
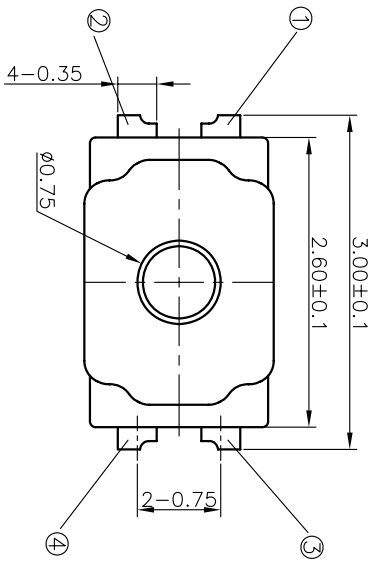


REV	ECN NO.	APPD
A	HC180073	ZO

规格 Specifications

额定负荷 Rating	DC 12V/50mA
接触电阻 Contact Resistance	500mΩ max.
绝缘电阻 Insulation resistance	DC100V 60S 100MΩ min.
抗电强度 Dielectric strength	AC250V(50-60HZ) 60S min.
操作力 Operation force	≥100±30gf    ≤140±30gf
寿命试验 Operating Life	200,000 cycles
行程 Travels	0.11±0.05mm



RECOMMENDED P.C.B. LAYOUT  
安装尺寸图

LAND PATTERN PLAN  
印刷电路板焊盘参考图

PRODUCT NO.: 1TS026A\*\*\*\*\*

- 轻触开关
- 2.6X1.6系列
- 外形:
- A=四脚
- B=四脚无接柄
- 按点颜色:
- 底座颜色:
- 贴膜颜色:
- 操作力度:
- 100=100gf
- 160=160gf
- 180=180gf
- 225=225gf
- 240=240gf
- 初始颜色
- 则不启用
- 手感:
- 0=常规(弹片)
- 1=大手感(弹片)
- 2=小手感(弹片)
- 3=特殊手感(弹片)
- 产品高度(H):
- 050=0.50mm
- 035=0.35mm
- 060=0.60mm
- 依次增加
- 材质:
- 0=初始材质
- 1=新理材质
- 3=3个弹片
- 依次增加
- 其它:
- CT=编带(非编带,不启用)

X. ± 0.2	X' ± 3'	ITEM	PART NAME	QUANTITY	MATERIAL	FINISH
.X ± 0.1	.X' ± 2'	5	KNOB	1	POLYAMIDE	BLACK
.XX ± 0.05	.XX' ± 1'	4	FILM	1	POLYAMIDE	WHITE
.XXX ± 0.03	.XXX' ± 0.5'	3	DOVE	2	STAINLESS STEEL	Ag-PLATED
		2	HOUSING	1	POLYAMIDE	BLACK
		1	TERMINAL	1	PHOSPHOR BRONZE	Ag-PLATED
NAME(INTENDED USE)		HON YUAN				
TACT SWITCHES		HON YUAN PRECISION IND. CO.,LTD.				
PART NO.(INTENDED USE)		SHENZHEN, CHINA.				
1TS026A*****		TITLE:				
APPD: ZO 6/05/2018		PRODUCT DRAWING				
CHKD: M.H.LI 6/05/2018		DWG NO.:				
DR: WP.LIU 6/05/2018		1TS026A				
		SCALE SHEET		REV.		
		25/1		A		

D C B A

1 2 3 4 5 6 7

## X-ON Electronics

Largest Supplier of Electrical and Electronic Components

*Click to view similar products for [Tactile Switches](#) category:*

*Click to view products by [HYP](#) manufacturer:*

Other Similar products are found below :

[5GTH92001](#) [5GTH9202242](#) [6407-250V-25273P](#) [ADTSA62NV](#) [ADTSA62RV](#) [B3F-3123](#) [1977177-8](#) [1977266-1](#) [ADTSA63NV](#)  
[ADTSM21NSVTR](#) [ADTSM25RVTR](#) [ADTSM32NVTR](#) [ADTSMW64RV](#) [FSMRA4JHA04](#) [GS4.70F300QP](#) [KSC241J SP DELTA LFS](#)  
[3FTL600RAS](#) [3FTL640RAS](#) [Y96K132V0FPLFS](#) [5GTH9658222](#) [6407-250V-25343P](#) [ADTSM31NVTR](#) [2-1977120-7](#) [TSJW-5.2-260-TR](#)  
[KMT011MNGJLHS](#) [B3WN6002S](#) [70-201.0](#) [ADTSG648NV](#) [ADTSM62KSVTR](#) [ADTSM648NV](#) [95C06E3RAT](#) [5GTH96561](#) [3ATH9Q](#)  
[FSMRA8JHA04](#) [HARS0073](#) [Y97HS12A5RAFP](#) [Y97BT23B2HAFP](#) [Y33R411N9FPLFT](#) [Y31C01402FPLFS](#) [PTS645SK50SMTR92](#)  
[ADTSM32NVB](#) [KMS233GPWTLFG](#) [Y78B64124FP](#) [PTS638SK25SMTR2LFS](#) [Y96D113G0FP LFS](#) [Y33A812C5FP LFT](#) [Y56B2D120FP](#)  
[LFS](#) [PTS645 DVM83-BN125-2 LFS](#) [B3W 1000G](#) [KSC621G OL LFS](#)