

### Features

- Supports Intel® Core™2 Duo processors 667/800/1066MHz FSB
- 2x DDR2 SO-DIMM, Max. 8GB
- Onboard dual Gigabit LAN
- Integrated VGA for CRT & LVDS
- 4x SATA II, 8x USB 2.0, 4x COM, 1x IDE, 1x CF
- 1x PCI, 1x PCI-E(x1), 1x Mini PCI-E



### System

CPU Socket	Socket P for Intel® Core™ 2 Duo processors
System Memory	2x DDR2 SO-DIMM, 667/800MHz, Max. 8GB
System Chipset	Intel® GM45 + ICH9M (MI945F) / ICH9ME (MI945RF/MI945AF), 667/800/1066MHz FSB
BIOS	Award (MI945F/MI945RF) / AMI (MI945AF)
Watchdog Timer	256 levels
SSD	CF socket (solder side)
H/W Monitor	Yes
Expansion Slots	1x PCI, 1x PCI-E(x1), 1x Mini PCI-E

### Graphics

VGA Controller	Intel® GM45 integrated GMA 4500MHD
VGA Memory	Supports DDMT 5.0; Max. shared memory - 1GB
Display Interface	Supports CRT & 18-bit/24-bit dual channel LVDS, optional daughter card supports 2nd CRT and single/dual DVI

### LAN

Controller	ICH9M integrated Intel® 82567LM Gigabit LAN Intel® 82574L PCI-E Gigabit LAN for 2nd LAN
Connector	RJ-45 on board

### Multi I/O

I/O Chipset	Winbond W83627DHG-P + Fintek 81216AD 1x IDE, 1x KB, 1x mouse, 3x RS232, 1x RS-232/422/485, 4x SATA II
USB	4 ports on board Pin header for 4 ports (USB 2.0)
Audio	Intel® ICH9M built-in HD audio w/ Realtek ALC892 codec for 7.1CH
Others	Digital I/O (4 in, 4 out)

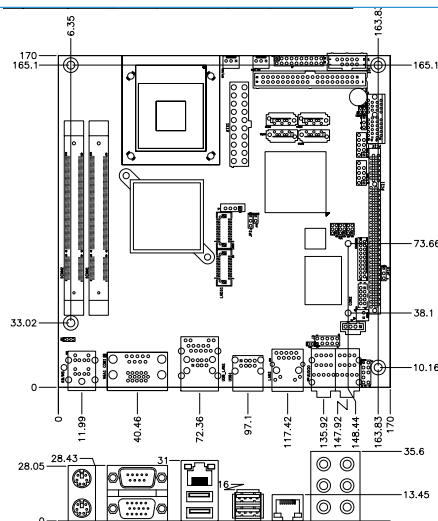
### Mechanical and Environmental

Dimensions	170mm x 170mm (6.7" x 6.7")
Max. Power Requirement	Intel® Core™2 Duo T9400 2.53GHz w/ 2GB DDR2-667 +12V: 2.01A, +5V: 0.45A, +3.3V: 0.82A
Operating Temperature	0°C~60°C (32°F~140°F)
Storage Temperature	-20°C~80°C (-4°F~176°F)
Relative Humidity	10%~90% (non-condensing)

### Ordering Information

MI945F	Socket P GM45 Mini-ITX motherboard with VGA and dual Gigabit LAN (ICH9M)
MI945AF	Socket P GM45 Mini-ITX motherboard with VGA, dual Gigabit LAN, RAID, iAMT 4.0 (ICH9ME)
MI945RF	Socket P GM45 Mini-ITX motherboard with VGA, dual Gigabit LAN and RAID (ICH9ME)

### Dimensions Drawing



Remarks: 1. Specifications are subject to change without prior notice.  
2. ODM/OEM is available.  
3. For user's manual & datasheet download, visit [www.ibase.com.tw](http://www.ibase.com.tw).

## X-ON Electronics

Largest Supplier of Electrical and Electronic Components

*Click to view similar products for [Single Board Computers](#) category:*

*Click to view products by [Ibase](#) manufacturer:*

Other Similar products are found below :

[MANO882VPGGA-H81](#) [SSD3200W-S-SLC-INN 20-101-0738](#) [MVME61006E-2173R](#) [SHB230DGGA-RC](#) [CM2-BT2-E3825-ETT](#)  
[IMB210VGGA](#) [IB915F-3955](#) [MI958F-16C](#) [S2600WFT](#) [S2600STB](#) [BBS2600BPS](#) [BLKNUC7I3DNHNC1978015](#) [DEV-17745](#)  
[BEAGLEBOARD POCKET](#) [MICROSOM I2 + WIFI/BT](#) [HUMMINGBOARD-I2EX BASE + WIFI/BT](#) [HUMMINGBOARD-I4 PRO +](#)  
[WIFI/BT](#) [VAB-600-B](#) [MITX-440-DVI-2E](#) [ATCA-7365-D-24GB](#) [NITX-315-DEVKIT](#) [A13-SOM-512](#) [NITX-315](#) [BANANA PI BPI-M1+](#)  
[A13-SOM-WIFI-4GB](#) [AM3359-SOM-EVB-IND](#) [UPS-APLC2-A10-0432](#) [DFR0419](#) [UPS-APLP4-A10-0864](#) [UPS-APLP4-A10-0432](#) [UPS-](#)  
[APLP4-A10-08128](#) [MI977F-Q27](#) [BBBLUE](#) [IB811F-I30](#) [DFR0470-ENT](#) [Nit6Q\\_i](#) [M2M \(TELIT\)](#) [RELAY](#) [PROFESSIONAL](#)  
[GCS22.2.080.2.2.I](#) [GCS22.8.100.4.2.I](#) [GLS11.2.053.2.2.E](#) [A20-OLINUXINO-LIME-E16GS16M](#) [A20-OLINUXINO-LIME-S16M](#) [A20-](#)  
[OLINUXINO-LIME2-E16GS16M](#) [A20-OLINUXINO-MICRO-S16M](#) [BANANA PI BPI-W2](#) [T2-OLINUXINO-LIME2-S16M-IND](#) [T2-](#)  
[OLINUXINO-MICRO-E8GS16M-IND](#)