

CT07-1000 Current Sense Xfmr



Features

- Rated to 200A
- PCB Mount
- Encapsulated Construction
- 47Hz to 2.5kHz Freq. Range

Applications

- Switching Power Supplies
- Motor Controls

Packaging

- 60 Pcs./Tray
- 9 Trays/Box
- 540 Pcs./Box

Terminating Resistor Options

I _{Pri}	Terminating Resistor	E _o
10	140	1.4
20	70	1.4
50	28	1.4
100	14	1.4
150	8	1.2
200	6	1.2

$$E-T = (E_o * 1/f)/2 \text{ (Bi-Polar Only)}$$

$$E_o = I_p * (R_b/Tr)$$

E_o = Output V I_p = Pri. Current Tr = Turns Ratio
 f = frequency R_b = Term Res.

Electrical Specifications

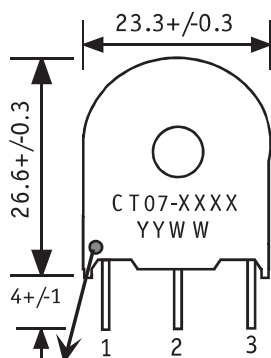
- Secondary Turns: 1,000
- Current Range: Up to 200A
- Hi-Pot: 3,750 Vac Pri:Sec (60Hz, 1mA max, 1 min)
- Operating Temp. Range: -40C to +105C
- Secondary Inductance: 8H min.
- Secondary DCR: 26 Ohms max.
- E-T Rating: 6,000 V-uSec at 100C (Bi-Polar Only)
- Electrical specifications at 25C
- Frequency Range: 47Hz to 2.5kHz

Material Specifications

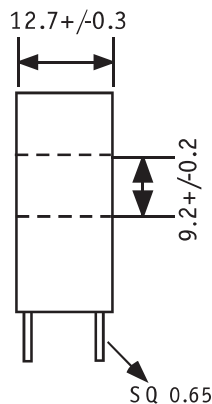
- Meets UL94V-0
- RoHS Compliant
- Material Rating: Meets requirements for UL Class A temperature rating. Ambient + Temp. Rise + Hot Spot Allowance ≤ 105C.



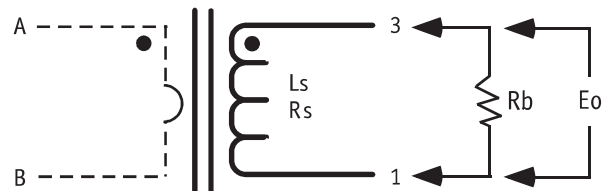
Front View



Side View

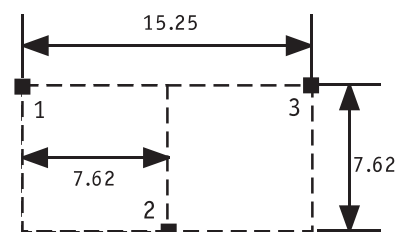


Schematic



Footprint

TOP VIEW



units: mm

X-ON Electronics

Largest Supplier of Electrical and Electronic Components

Click to view similar products for [Current Transformers](#) category:

Click to view products by [ICE](#) manufacturer:

Other Similar products are found below :

[L595100](#) [ACST-260](#) [AKW4802C](#) [MP3500](#) [L595050](#) [E54CT1L](#) [CTD-KIT](#) [44021](#) [44104](#) [44176](#) [44248](#) [45041](#) [45071](#) [PA3828NL](#) [CT16-1-50A/50MA](#) [SPCT 100/60 1200/5A VA 15 CL 0.5](#) [SPCT 100/60 1000/5A VA 15 CL 0.5](#) [SPCT 100/60 600/5 A VA 7.5 CL 1](#) [SPCT 100/60 600/5 A VA 5 CL 0.5](#) [SPCT 100/60 800/5 A VA 10 CL 0.5](#) [SPCT 140/100 1200/5A VA 15 CL 0.5](#) [SPCT 140/100 1250/5A VA 15 CL 0.5](#) [SPCT 140/100 1500/5A VA 15 CL 0.5](#) [SPCT 140/100 1600/5A VA 15 CL 0.5](#) [SPCT 140/100 1000/5A VA 15 CL 0.5](#) [SPCT 140/100 2500/5A VA 15 CL 0.5](#) [SPCT 140/100 2000/5A VA 15 CL 0.5](#) [SPCT 140/100 3000/5A VA 15 CL 0.5](#) [SPCT 140/100 800/5A VA 15 CL 0.5](#) [SPCT 62/30 50/5A VA1 CL 3](#) [SPCT 62/30 60/5A VA1 CL 3](#) [SPCT 62/30 75/5A VA1 CL 3](#) [SPCT 62/30 75/5A VA3 CL 3](#) [SPCT 62/40 100/5 A VA 1 CL 1](#) [SPCT 62/40 125/5 A VA 1 CL 1](#) [SPCT 62/40 150/5 A VA 3 CL 1](#) [SPCT 62/40 160/5 A VA 1.5 CL 1](#) [SPCT 62/40 200/5 A VA 3 CL 1](#) [SPCT 62/40 250/5 A VA 2.5 CL 0.5](#) [SPCT 62/40 250/5 A VA 3 CL 1](#) [SPCT 62/40 300/5 A VA 3 CL 0.5](#) [SPCT 62/40 400/5 A VA 3.75 CL 0.5](#) [2CSM029000R1211](#) [HPT205NBJ-1](#) [HCT204KFH](#) [HCT20K-QD](#) [HPT205A/F](#) [HCT-1\(80\)AH](#) [HCT916HBT-1W](#) [CT100A](#)