

Data Sheet



Helping Engineer the Technology of Power

ICE Components, Inc.

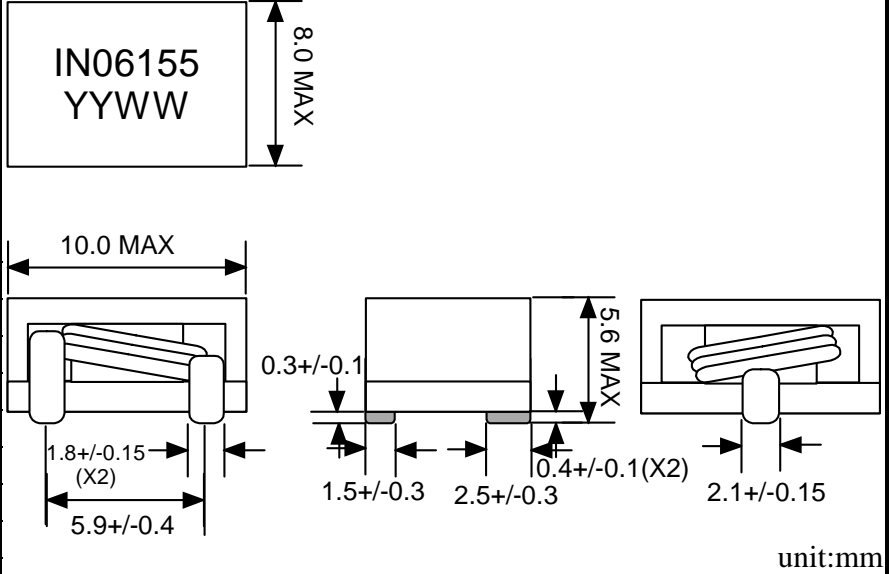
Tel 678-560-9172 Fax 678-560-9304

cust.serv@icecomp.com

www.icecomponents.com

1165 Allgood Rd., Ste. #20, Marietta, GA 30062

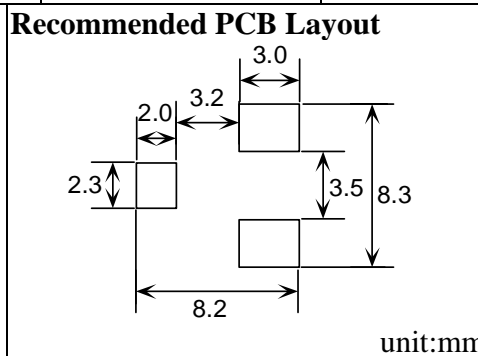
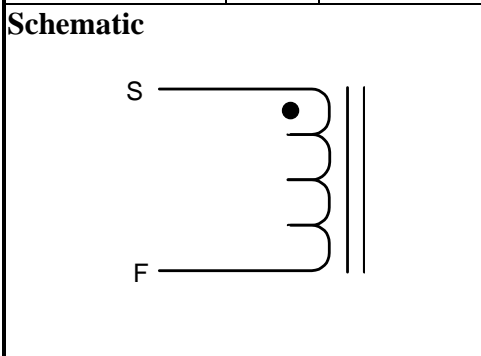
Mechanical Drawing



General Information	
Customer	
Part Number	IN06155
Revision	0
Description	Inductor
Date	AUG-07-2009
Reference	--
Doc Control #	--
Issue(For ICE use only)	--

Specification			Sample Test Data
Item	Pins	Spec	Test Condition
Inductance @0Adc	S - F	1.0 uH +/- 15%	500 kHz, 0.1Vrms, series
Inductance @Isat at 25degC	S - F	0.75 uH min	500 k Hz, 0.1Vrms, series (19Adc)
DCR	S - F	2.3 mOhm typical (3.5 mOhm max)	+25 deg C
Isat at 25degC	S - F	19 Adc max	

Specification			Sample Test Data
Item	Pins	Spec	Test Condition
Inductance @0Adc	S - F	1.0 uH +/- 15%	500 kHz, 0.1Vrms, series
Inductance @Isat at 25degC	S - F	0.75 uH min	500 k Hz, 0.1Vrms, series (19Adc)
DCR	S - F	2.3 mOhm typical (3.5 mOhm max)	+25 deg C
Isat at 25degC	S - F	19 Adc max	



Remark

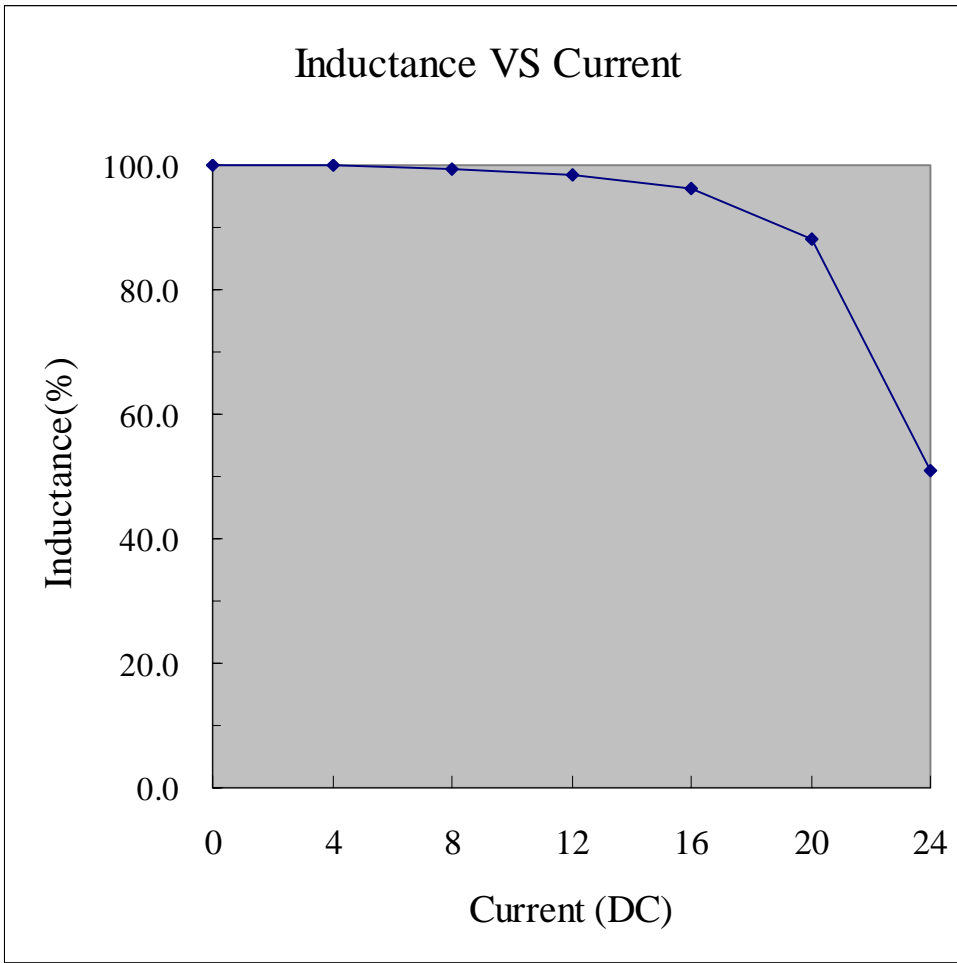
- 1) This is RoHS compliant product.
- 2) Isat is the current at which the inductance drops by 15%.
- 3) Inductance vs. Current Curve as attached.
- 4) The max operating temperature is 130degC (ambient + temperature rise).

Sample approval is required before release to production. Sample specifications take precedence over customer specifications.

Customer Signature

Rev.	Description	PRD	CHK	APP	Date	NTFY
0	Initial release	Emily	Gary	L. L. Chou	2009/8/7	2009/8/7

P/N: IN06155



X-ON Electronics

Largest Supplier of Electrical and Electronic Components

Click to view similar products for [Fixed Inductors](#) category:

Click to view products by [ICE](#) manufacturer:

Other Similar products are found below :

[CR32NP-100KC](#) [CR43NP-680KC](#) [CR54NP-820KC](#) [CR54NP-8R5MC](#) [CTX32CT-100](#) [70F224AI](#) [MGDQ4-00004-P](#) [MHL1ECTTP18NJ](#)
[MHL1JCTTD12NJ](#) [PE-51506NL](#) [PE-53601NL](#) [PE-53602NL](#) [PE-53630NL](#) [PE-53824SNLT](#) [PE-62892NL](#) [PE-92100NL](#) [PG0434.801NLT](#)
[PG0936.113NLT](#) [9310-16](#) [PM06-2N7](#) [PM06-39NJ](#) [A01TK](#) [1206CS-471XJ](#) [HC2-2R2TR](#) [HC2LP-R47-R](#) [HC3-2R2-R](#) [1206CS-151XG](#)
[RCH664NP-140L](#) [RCH664NP-4R7M](#) [RCH8011NP-221L](#) [RCP1317NP-332L](#) [RCP1317NP-391L](#) [RCR1010NP-470M](#) [RCR110DNP-331L](#)
[DH2280-4R7M](#) [DS1608C-106](#) [ASPI-4020HI-R10M-T](#) [B10TJ](#) [B82477P4333M](#) [B82498B3101J000](#) [B82498B3680J000](#) [ELJ-RE27NJF2](#)
[1812CS-153XJ](#) [1812CS-183XJ](#) [1812CS-223XJ](#) [1812LS-104XJ](#) [1812LS-105XJ](#) [1812LS-124XJ](#) [1812LS-154XJ](#) [1812LS-223XJ](#)