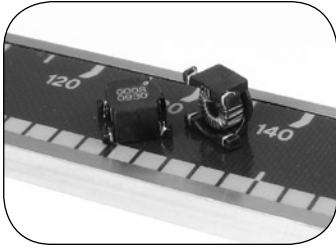


# X-Coil

## Gate and Signal Transformer



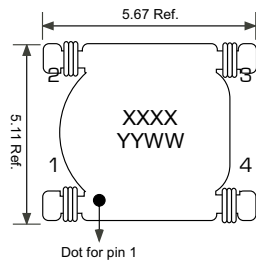
### Features

- Small Footprint
- Low Profile
- Flat Top Surface Suitable for Pick-and-Place
- RoHS Compliant

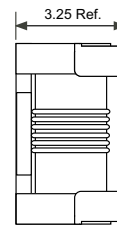
### Applications

- Gate Drive Transformer
- Isolated Pulse and Signal Transformers
- DC/DC and AC/DC Converters

Top View



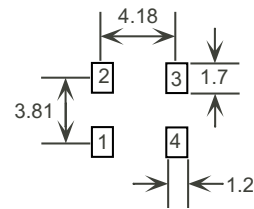
Side View



Schematic



Footprint



units: mm

### Electrical Specifications

Part No.	$L_s^1$ ( $\mu\text{H Min.}$ )	$L_{LKG}^1$ ( $\text{nH Max.}$ )	DCR ( $\text{mOhms Max.}$ )	E-T ( $\text{V}\cdot\mu\text{Sec}$ )	Turns Ratio	Hi-Pot ( $V_{DC}$ )
XT01	100	150	320	10.0	1:1	2,250
XT02	140	150	350	12.8	1:1	120
XT03	31	600	120	3.75	1:1	2,350
XT04	86	100	140	6.25	1:1	2,350

#### Notes:

1. Tested at 100kHz, 0.1Vrms.
2. Electrical specifications at 25°C.
3. Operating range: -40°C to +130°C. This is a combination of ambient plus temperature rise.
4. All products are RoHS-compliant.



Specifications subject to change without notice.

## X-ON Electronics

Largest Supplier of Electrical and Electronic Components

*Click to view similar products for [Pulse Transformers](#) category:*

*Click to view products by [ICE](#) manufacturer:*

Other Similar products are found below :

[E4001NLT](#) [1879401-1](#) [IF-18-0269-N](#) [T1049NL](#) [PE-68023NL](#) [PH0905NL](#) [PT4163S](#) [PT5010](#) [PA0173NLT](#) [CTX02-14608](#) [PE-65457NLT](#)  
[T60403-D4721-X088](#) [H1183NLT](#) [CTX33-18971-R](#) [HM2108NLT](#) [HM0068ANLT](#) [PG1427.001NLT](#) [750313723](#) [750031353](#)  
[PH9400.566NLT](#) [PH9400.655ANLT](#) [PH9400.655NLT](#) [PH9385.013NLT](#) [HX6096FNL](#) [HX6106NLT](#) [P0926NL](#) [HX6096NL](#) [PA3493NLT](#)  
[P0585ANL](#) [H1183NL](#) [HU4102NL](#) [PH9385.012NLT](#) [78601/9JC-R](#) [PH9400.111NLT](#) [PH9400.211NLT](#) [PH9400.233ANLT](#) [SMQC1553-6](#)  
[SMQ1553-45](#) [Q1553-45](#) [Q1553-22](#) [Q1553-21](#) [PH9400.211ANLT](#) [TGMR-1450V6LF](#) [TGMR-360V6LF](#) [P0544](#) [PA0264NLT](#) [T60403-](#)  
[D4215-X014](#) [T60403-F4185-X035](#) [CTX02-13400](#) [CTX02-14121](#)