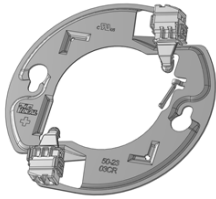




MODEL 50-23

CHIP-LOK™
COB ARRAY HOLDER

FEATURES/BENEFITS:



- METAL HOLDER BASE IS RESISTANT TO CREEP TO PREVENT THERMAL AND ELECTRICAL ISSUES TYPICAL AT ELEVATED OPERATING TEMPERATURES OVER TIME
- COB HOLDING ARM SECURES ARRAY TO HOLDER FOR EASE OF INSTALLATION
- KEYWAYS ALLOW FOR PRE-INSTALLATION OF SCREWS TO EASE ASSEMBLY AND MINIMIZE DAMAGE TO PHOSPHOR
- TOUCH-SAFE DESIGN IS UL RECOGNIZED FOR 250V TO ALLOW USE IN DAISY CHAINED APPLICATIONS
- STAINLESS STEEL BODY PROVIDES ADDITIONAL HEAT SINKING PATHS TO ALLOW ARRAY TO RUN COOLER COMPARED WITH SCREWS AND PLASTIC HOLDERS.

ELECTRICAL:

VOLTAGE: 250 V MAX
CURRENT: 4 A MAX

MECHANICAL:

DIAMETER: 2.56 in (65.0 mm)
HEIGHT: 0.27 in (6.98 mm) MAX
WEIGHT: 0.39 oz (10.3 grams)
SCREW SIZE: #5-40 (M3)
SCREW TORQUE: 5 in-lb(0.5 Nm) MAX
SCREW CIRCLE DIA: 1.97 in (50.0 mm)
WIRE STRIP LENGTH: 1/4"-5/16" (7 mm)

PHYSICAL:

BASE PLATE: 301 SS
CONTACT HOUSING: THERMOPLASTIC
ELECTRICAL CONTACTS: COPPER ALLOY
PLATING: SILVER OVER NICKEL
TEMPERATURE: 110°C

RoHS AND REACH COMPLIANT
HALOGEN FREE, NON-CHLORINATED & NON-BROMINATED FLAME RETARDANT

STANDARDS & SPECIFICATIONS:

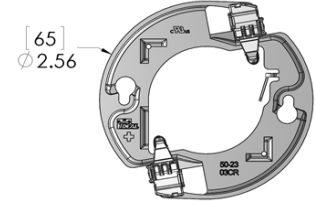
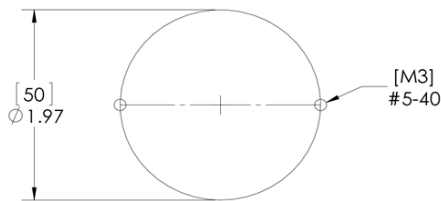
RECOGNIZED COMPONENT UL 496 (US/CANADA)
EIA -364-1000 (THERMAL CYCLING)
EIA-364-31 (THERMAL SHOCK & HUMIDITY)
EIA-364-17 (ELEVATED TEMPERATURE - LIFE)
UL 2459 (CURRENT CYCLING - TEMP RISE)
IEC 60068-2-7 (VIBRATION)

US & FOREIGN PATENTS PENDING

WIRE RANGE:

	AWG (UL 496)	METRIC
SOLID	18-24 AWG	0,75 - 0,25 mm2
STRANDED	18-22 AWG	0,75 - 0,25 mm2
TIN BONDED	18-24 AWG	0,75 - 0,25 mm2

DIMENSIONS:



ORDERING INFO:

CATALOG #	MANUFACTURER	COB ARRAY		CARTON QTY:	WEIGHT LBS (KG):
50-2303CR	CREE	CXA35		320	8.0 (3,6)

FACTORY CONTACT:

ENGINEERED SOLUTIONS
IDEAL INDUSTRIES, INC.
1375 PARK AVENUE SYCAMORE IL USA 60178
P: 1-800-324-9571
F: 1-888-222-6140
E: oem@idealindustries.com

SALES CONTACT:

X-ON Electronics

Largest Supplier of Electrical and Electronic Components

Click to view similar products for [ideal manufacturer](#):

Other Similar products are found below :

[30-696](#) [74-027](#) [45-292](#) [45-098](#) [L-5361](#) [45-093](#) [45-177](#) [45-1987-1](#) [41-990](#) [25HK-AY-090A266-DH](#) [15DYS6150-2400625P](#) [45-418](#) [30-503](#)
[35-020](#) [35-060](#) [35-516](#) [45-1633-1](#) [45-170](#) [45-1773-1](#) [45-1774](#) [45-1939-1](#) [45-2133-1](#) [45-298](#) [45-372](#) [K-6336](#) [K-8906R](#) [L-4866](#) [L-5210](#) [L-](#)
[5562](#) [L-9038](#) [LB-1091](#) [35-522](#) [61-775](#) [KB-0276R](#) [30-429](#) [30-587](#) [33-856](#) [45-672](#) [45-171](#) [45-144](#) [34-015](#) [33-864](#) [30-506](#) [25HK-AP-](#)
[060A100-CP-3A](#) [15DYS624-240125W-K](#) [15DYS6150-4800312P](#) [33-704](#) [45-092](#) [45-121](#) [45-1513](#)