

USB / RJ45 ports with flat stylish design

New product addition for the flush silhouette switches



Flush silhouette

Flush bezel projects only 2mm from the front of the panel. Ideal for applications where a safe and hygienic surface is required.

Cable attached

Plastic encapsulated structure of the rear part prevents the cable from falling off. (USB port only)

Accessories with IP65/67 protection

Rubber and transparent plastic covers available. Water- and dust-proof.

Specification / Performance



USB2.0

Part No.	CW1X-USB20-1M	CW4X-USB20-1M
Connector standard	USB2.0 compliant	
Operating temperature	-25 to +70°C (no freezing)	
Storage temperature	-25 to +70°C (no freezing)	
Storage temperature (when packaged)	-10 to +50°C (no freezing)	
Relative humidity	0 to 90%RH (Max) (no condensation)	
Connecting cycles	1,500 times	
Connecting force	35N max.	
Removal force	10N min.	
Locking screw recommended tightening torque	1.2 to 1.5 N·m	
Bezel material	PBT	
Cable	AWG28, USB2.0, Standard cable, PVC shield (black)	
Protection degree	IP20 IP65/67 (accessory attached)	

RJ45

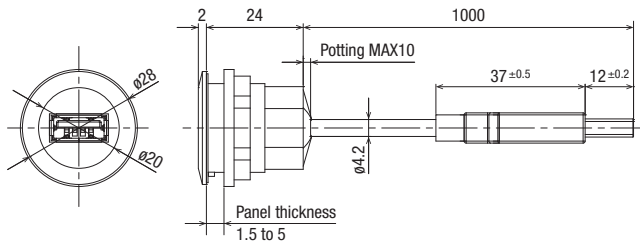
Part No.	CW1X-RJ45	CW4X-RJ45
No. of contacts	8 pin	
Operating temperature	-25 to +70°C (no freezing)	
Storage temperature	-25 to +70°C (no freezing)	
Storage temperature (when packaged)	-10 to +50°C (no freezing)	
Relative humidity	0 to 90%RH (Max) (no condensation)	
Connecting cycles	750 times	
Transmission performance	ISO/IEC 11 801: 2002 EN 50 173-1: Cat.6 Class EA 10/100 Mbit Ethernet 1/10 Gbit Ethernet	
Locking screw recommended tightening torque	1.2 to 1.5 N·m	
Bezel material	PBT	
Protection degree	IP20 IP65/67 (accessory attached)	

Ports



Shape	Bezel color	Part No.	Remarks
 USB2.0	Black	CW1X-USB20-1M	Cable length: 1m
	Metallic	CW4X-USB20-1M	USB2.0 TypeA
 RJ45	Black	CW1X-RJ45	No. of contacts: 8 pin
	Metallic	CW4X-RJ45	

Dimensions

USB2.0



Accessories

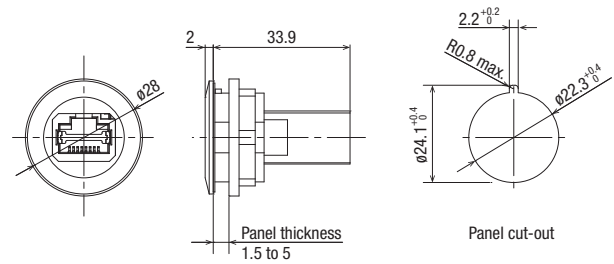
Name / Shape	Material	Color	Part No.	Protection Degree
 Rubber cap	TPE	Black	CW9Z-D1X1	IP65/67
 Plastic cover	[Lens] Polycarbonate [Main body] Polyamide [Gasket] NBR	Translucent	CW9Z-D1X2	IP65/67

Note 1) Accessories can only be used for CW series ports (CW1X / CW4X).
 Note 2) For the instruction sheet, read the QR code.



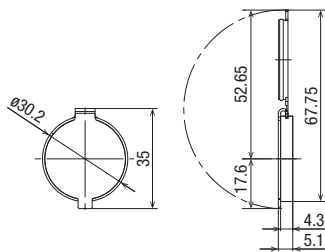
All dimensions in mm.

RJ45

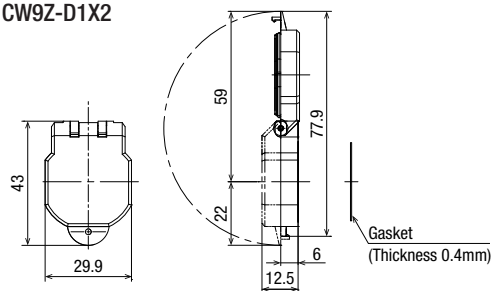


Dimensions for Accessories

Rubber cap CW9Z-D1X1



Plastic cover CW9Z-D1X2



• Panel thickness when CW9Z-D1X1/D1X2 is mounted: 1.5 to 5 mm

Recommended for use with the following products:

Flush Silhouette Switches

Flush Silhouette Switches

LB/LBW

Ø18.2 Ø22.3

□18.2 □22.5

18.2x24.2



LB series: Slim 2mm-thick bezels for stylish panels.
 LBW series: Projects only 2mm from the panel. Smart appearance with large surface for secure operation.

LW

Ø25.3

□24.5



Create stylish panel with flush bezels projecting only 2.0 mm from panel front. Easy to install/remove, and ideal for panels that require cleanliness and safety.

CW

Ø22



Flush bezel projecting only 2.5mm from panel front, with short, 39.9 mm depth behind the panel. Third-generation safety structure.

Programmable Logic Controller

Micro Smart FC6A Plus

FC6A

All-in-one

Plus



The MicroSmart FC6A series is available in two types of CPUs: Plus and All-in-One. The Plus type has a dual RJ45 Ethernet port, embedded web server functions and the capability to expand up to 2060 I/O, while the All-in-One type has an embedded serial port and RJ45 Ethernet port capable of expanding up to 520 I/O.

Operator Interface

HG

15 inch 8.4 inch

12.1 inch 5.7 inch

10.4 inch 4.3 inch



Excellent visibility by super-bright LED backlight. Withstands harsh environments, and suitable for use in a wide temperature range from cold to hot environment.

IDEC CORPORATION

Head Office

6-64, Nishi-Miyahara-2-Chome, Yodogawa-ku, Osaka 532-0004, Japan

 www.idec.com

USA	IDEC Corporation	Tel: +1-408-747-0550	opencontact@idec.com	Hong Kong	IDEC Izumi (H.K.) Co., Ltd.	Tel: +852-2803-8989	info@hk.idec.com
Singapore	IDEC Izumi Asia Pte. Ltd.	Tel: +65-6746-1155	info@sg.idec.com	China/Shanghai	IDEC (Shanghai) Corporation	Tel: +86-21-6135-1515	idec@cn.idec.com
Thailand	IDEC Asia (Thailand) Co., Ltd	Tel: +66-2-392-9765	sales@th.idec.com	China/Shenzhen	IDEC (Shenzhen) Corporation	Tel: +86-755-8356-2977	idec@cn.idec.com
Australia	IDEC Australia Pty. Ltd.	Tel: +61-3-8523-5900	sales@au.idec.com	China/Beijing	IDEC (Beijing) Corporation	Tel: +86-10-6581-6131	idec@cn.idec.com
Taiwan	IDEC Taiwan Corporation	Tel: +886-2-2577-6938	service@tw.idec.com	Japan	IDEC Corporation	Tel: +81-6-6398-2527	marketing@idec.co.jp

Specifications and other descriptions in this brochure are subject to change without notice.
 Information in this brochure is current as of September, 2019.
 2019 IDEC Corporation, All Rights Reserved.

EP1723-0



X-ON Electronics

Largest Supplier of Electrical and Electronic Components

Click to view similar products for [Pushbutton Switches](#) category:

Click to view products by [Idec](#) manufacturer:

Other Similar products are found below :

[8971K1133](#) [LW2L-M1C20M-A](#) [M22-D-R-GB0/K11](#) [701PB580](#) [7199K101](#) [810K12910](#) [810KSV30B](#) [FLT 2U EE 01A](#) [MML21EA2ADK](#)
[MML21KA3ABK](#) [MML23KA3AC05K-001](#) [MML23KW3AA01W](#) [8418K2](#) [8442K3](#) [8450K1](#) [860K11911T01A](#) [861901](#) [861K11911T01A07](#)
[861K13810T00A14](#) [861K13911](#) [8646AB6X718UL](#) [9533CD4+U574+U4922](#) [99-450.837](#) [99-453.837](#) [A2PMA1X03EC56](#) [A3A-7310](#) [A3A-](#)
[7340](#) [12037A2ULCSA](#) [1203A2UL](#) [ABGW410-R](#) [ABN400-R](#) [121382](#) [1213C3](#) [HE3B-M2](#) [121194](#) [1212MRA](#) [1241.1183.7047](#) [121489](#)
[1223A2ULCSA](#) [1241.1183.8000](#) [1241.1183.8029](#) [D5P-MT4](#) [13435AG](#) [13445AD29GX768](#) [AG23-L2](#) [AH165-2SGLG1TE3](#) [AH165-](#)
[TGFY22](#) [AH165-TGL5Y11E3](#) [AH165-TGLR11AA3](#) [AH165-TL5Y22E](#)