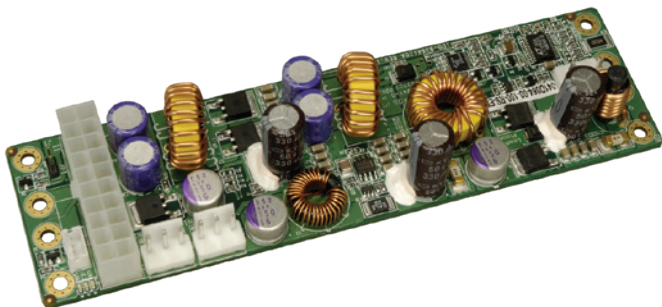


IDD-9364120A

120 W DC/DC Converter Module

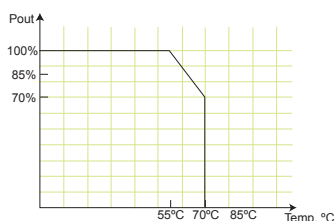


Features

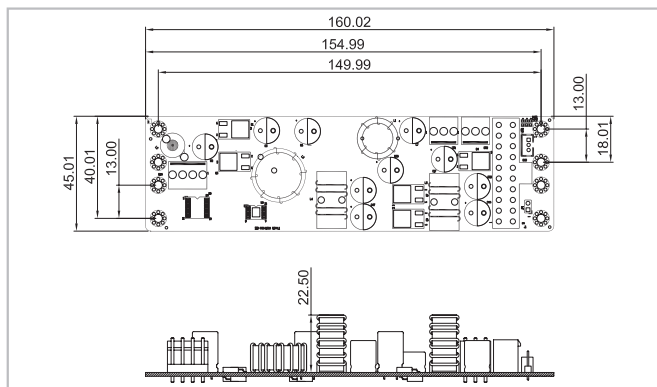
1. Wide input range: 9-36 VDC
2. AT or ATX mode on/off
3. Output voltage protection
4. Up to 90% efficiency
5. RoHS compliant
6. Compact size

Specifications

- Output (max.): 12 V@4 A, 5 V@10 A, 3.3 V@8 A, -12 V@0.3 A & 5VSB@2 A
- Max. total output: 120 W
- Input: 9 VDC to 36 VDC
- Performance characteristics
 - Noise & ripple: <240 mV
 - Line regulation: <50 mV
 - Load regulation: <100 mV
 - Efficiency: Up to 90%
- Dimensions (mm): 45 x 160
- Weight (NW): 104 g
- Operating temperature: -20°C ~ 70°C
- Storage temperature: -25°C ~ 75°C



Dimensions (Unit: mm)



Packing Information

- 1 x IDD-9364120A
- 1 x QIG

Ordering Information

Part No.	Description
IDD-9364120A-R11	120 W DC/DC 9~36 V input, 12 V, 5 V, 3.3 V, -12 V & 5VSB output
CB-3PSATA-RS	10 cm cable for SATA power
CB-3PIDE-RS	10 cm cable for IDE HDD power
CB-NOLP4-RS	20 cm cable for terminal block DC input
32102-021500-200-RS	30 cm 20-pin ATX to 20-pin ATX cable

Pin Assignments

Input Power Connector

CN4	Pin 1	Pin 2	Pin 3	Pin 4
	VIN	VIN	GND	GND

Output Power Connector

CN1, CN2	Pin 1	Pin 2	Pin 3
	+5 V	GND	+12 V

J1 Standard 2-pin ATX

ATX Mode Connector

CN3	Pin 1	Pin 2	Pin 3
	5VSB	GND	PS_ON

Wire Harness Selection Guide

DC Input (CN4)



- Option 1.**
PN: CB-NOLP4-RS
 Cable for terminal block

I/O Power (CN1 & CN2)



- Option 1.**
PN: CB-3PSATA-RS
 Cable for SATA

SBC Main Power (J1)



- Option 1.**
PN: 32102-021500-200-RS
 20-pin ATX to 20-pin ATX cable



- Option 2.**
PN: CB-3PIDE-RS
 Cable for IDE HDD or any STD 4-pin I/O devices

X-ON Electronics

Largest Supplier of Electrical and Electronic Components

Click to view similar products for [Isolated DC/DC Converters](#) category:

Click to view products by [IEI](#) manufacturer:

Other Similar products are found below :

[ESM6D044440C05AAQ](#) [FMD15.24G](#) [PSL486-7LR](#) [Q48T30020-NBB0](#) [JAHW100Y1](#) [SPB05C-12](#) [SQ24S15033-PS0S](#) [18952](#) [19-130041](#)
[CE-1003](#) [CE-1004](#) [GQ2541-7R](#) [RDS180245](#) [MAU228](#) [J80-0041NL](#) [DFC15U48D15](#) [XGS-0512](#) [XGS-1205](#) [XGS-1212](#) [XGS-2412](#) [XGS-](#)
[2415](#) [XKS-1215](#) [06322](#) [NCT1000N040R050B](#) [SPB05B-15](#) [SPB05C-15](#) [L-DA20](#) [DCG40-5G](#) [QME48T40033-PGB0](#) [XKS-2415](#) [XKS-2412](#)
[XKS-1212](#) [XKS-1205](#) [XKS-0515](#) [XKS-0505](#) [XGS-2405](#) [XGS-1215](#) [XGS-0515](#) [PS9Z-6RM4](#) [73-551-5038I](#) [AK1601-9RT](#) [VI-N61-CM](#) [VI-](#)
[R5022-EXWW](#) [PSC128-7iR](#) [RPS8-350ATX-XE](#) [DAS1004812](#) [PQA30-D24-S24-DH](#) [VI-M5F-CQ](#) [VI-LN2-EW](#) [VI-PJW01-CZY](#)