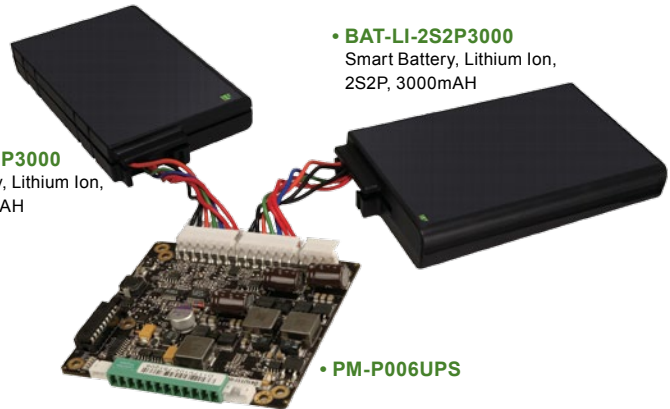
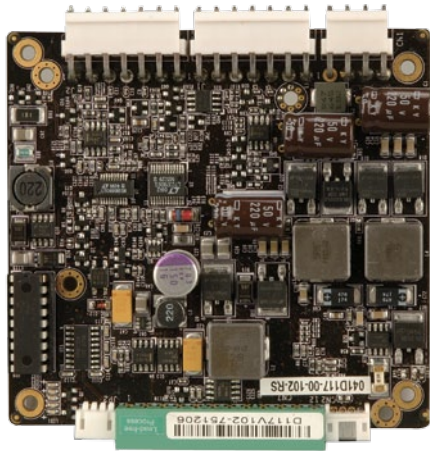


PM-P006UPS

65 W DC/DC Converter Module, with UPS



• **BAT-LI-2S2P3000**
Smart Battery, Lithium Ion,
2S2P, 3000mAH

• **BAT-LI-2S2P3000**
Smart Battery, Lithium Ion,
2S2P, 3000mAH

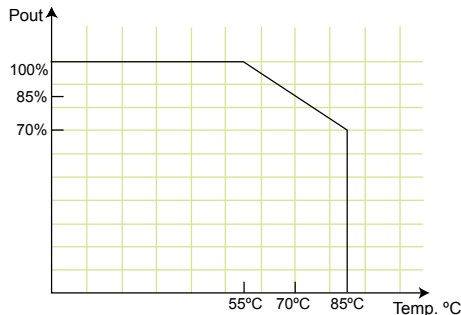
• **PM-P006UPS**

Features

1. Load down protection
2. Over voltage protection
3. Short circuit protection
4. Over current protection
5. Smart battery charger for Lithium Ion
6. I/O interface: SMBus/I2C & RS-232
7. Support up to two battery packs
8. AT/ATX modes
9. Utility program: pull data out through RS-232 to a system

Specifications

- Output (max.): 12 V@4 A, 5 V@10 A, 3.3 V@8 A, 5 VSB@1 A, & -12 V @0.1 A
Max. total output: 65 W
- Input: 6 VDC to 36 VDC
- Battery charge voltage: 12 V ~ 36 V
- Efficiency: up to 90%
- Dimensions: 90 mm x 96 mm
- Weight: NW: 178 g
- Operating temperature: -20°C ~ 85°C (without smart battery)
Operating temperature: -10°C ~ 60°C (w/With smart battery)
- Storage temperature: -35°C ~ 95°C



Applications



Battery backup system

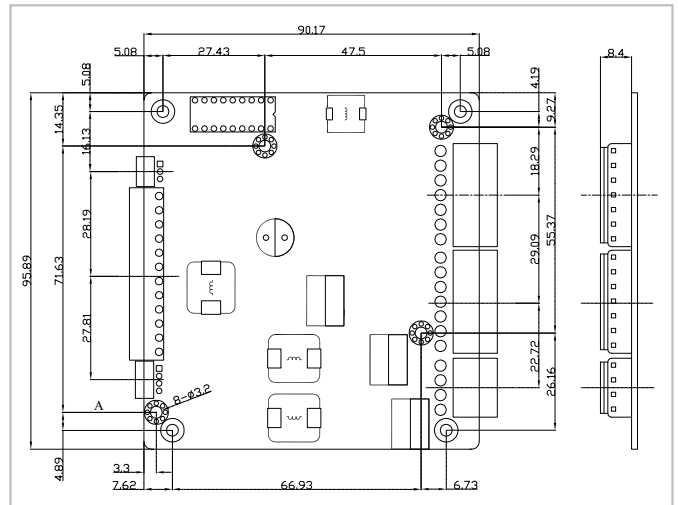


Portable equipment



Power sensitive equipment

Dimensions (Unit: mm)



Packing Information

- 1 x PM-P006UPS
- 1 x QIG
- 1 x Utility CD
- 1 x DB-9 pin connector cable (32100-157200-RS)

Ordering Information

Part No.	Description
PM-P006UPS-R10	65 W ATX DC/DC 6-36 VDC input, 12 V, 5 V, 3.3 V, -12 V and 5 VSB PC/104 power module with UPS
BAT-LI-2S2P3000-R10	Smart Battery, Lithium Ion, 2S2P, 3000 mAH
CB-JST3PSW001-RS	30 cm power on/off switch cable
CB-P1LP4-RS	20 cm cable for FSP0601AD101C 60 W/ UP0451E12P 45 W/ UP0251E12PL 25 W AC-DC adapter
CB-MD4P4-RS	16 cm cable for 63000-FSP120AAB-RS 120 W AC-DC adapter
CB-NOLP4-RS	20 cm cable for terminal block DC input

High Energy Density, Light Weight and Compact DC/DC UPS & Power Module

Protect your precious equipment from damage. Reduce the risk of losing valuable data.

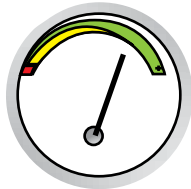
An uninterruptible power supply provides emergency backup power when the main power is lost.

Benefits:

- Provides power for a certain amount of time after a power failure has occurred.
- Provides stable power to equipment during line sags and spikes.
- Absorbs power surges and transients.
- Smooths out noisy power sources.

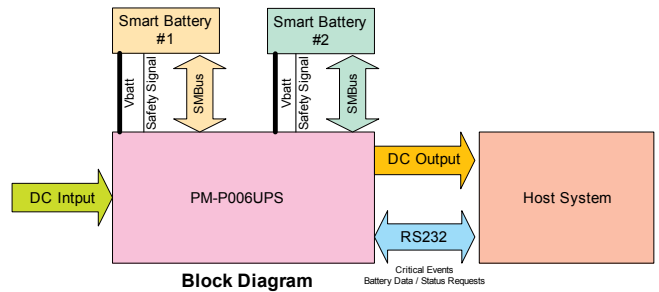
The utility software displays the following information:

- Current power source
- Battery status
- Charging status
- Remaining battery percentage

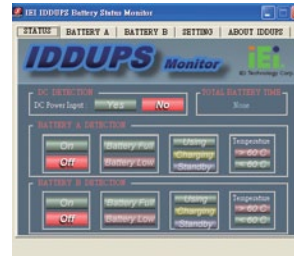


Battery Capacity Status

Level 2 Smart Battery Charger & Power Modules



Block Diagram



Battery Monitoring Utility



Battery Monitoring Connection Cable (PN: 32100-157200-RS)

Battery Pack (P/N: BAT-LI-2S2P3000)



Battery Type	Lithium Ion			
Pout (W)	100	80	60	40
Time (min)	8	14	18	27
Dimensions	148 x 89 x 20 mm			
Capacity	3000 mAH			

Pin Assignments

Input Power Connector

CN1	Pin 1	Pin 2	Pin 3	Pin 4
	VIN	VIN	Gnd	Gnd

I/O Interface RS-232 Connector

JP2	Pin 1	Pin 2	Pin 3
	Gnd	TX	RX

Output Power Connector

CN7	Pin 1	Pin 2	Pin 3	Pin 4	Pin 5	Pin 6	Pin 7	Pin 8	Pin 9	Pin 10	Pin 11	Pin 12
	N12V	Gnd	12 V	Gnd	3 V	3 V	Gnd	5 V	5 V	Gnd	5 VSB	Gnd

ATX Mode Connector

CN2	Pin 1	Pin 2	Pin 3	Pin 4
	PWROK	5 VSB	Gnd	PS_ON

Battery Connector

J1 J2	Pin 1	Pin 2	Pin 3	Pin 4	Pin 5	Pin 6	Pin 7
	BAT+	BAT+	Clock	Data	Temp	Gnd	Gnd

Wire Harness Selection Guide

DC Input



Options 1.
PN: CB-P1LP4-RS
 Cable for FSP0601AD101C 60 W / UP0451E12P 45 W/UP0251E12PL 25 W AC-DC adapter



Options 2.
PN: CB-MD4P4-RS
 Cable for 63000-FSP120AAB-RS 120 W AC-DC adapter



Options 3.
PN: CB-NOLP4-RS
 Cable for terminal block

Power On/Off



Options 1.
PN: CB-JST3PSW001-RS
 Cable to SBC(power ok & 5 VSB)
 Pin1= Power ok
 Pin2= 5 VSB
 Pin3, 4= Connector switch

X-ON Electronics

Largest Supplier of Electrical and Electronic Components

Click to view similar products for [Isolated DC/DC Converters](#) category:

Click to view products by [IEI](#) manufacturer:

Other Similar products are found below :

[ESM6D044440C05AAQ](#) [FMD15.24G](#) [PSL486-7LR](#) [Q48T30020-NBB0](#) [JAHW100Y1](#) [SPB05C-12](#) [SQ24S15033-PS0S](#) [18952](#) [19-130041](#)
[CE-1003](#) [CE-1004](#) [GQ2541-7R](#) [RDS180245](#) [MAU228](#) [J80-0041NL](#) [DFC15U48D15](#) [XGS-0512](#) [XGS-1205](#) [XGS-1212](#) [XGS-2412](#) [XGS-2415](#) [XKS-1215](#) [06322](#) [NCT1000N040R050B](#) [SPB05B-15](#) [SPB05C-15](#) [L-DA20](#) [DCG40-5G](#) [QME48T40033-PGB0](#) [XKS-2415](#) [XKS-2412](#)
[XKS-1212](#) [XKS-1205](#) [XKS-0515](#) [XKS-0505](#) [XGS-2405](#) [XGS-1215](#) [XGS-0515](#) [PS9Z-6RM4](#) [73-551-5038I](#) [AK1601-9RT](#) [VI-N61-CM](#) [VI-R5022-EXWW](#) [PSC128-7iR](#) [RPS8-350ATX-XE](#) [DAS1004812](#) [PQA30-D24-S24-DH](#) [VI-M5F-CQ](#) [VI-LN2-EW](#) [VI-PJW01-CZY](#)