

TANK

ACCELERATE TO THE FUTURE

AIoT Dev. Kit





The TANK AIoT Dev. Kit features rich I/O and dual PCIe x8 signals to support add-ons like the Acceleration cards (Mustang-F100-A10 & Mustang-V100-MX8) or the PoE card to enhance performance and function for various applications.

» Integrate AI into IOT applications



Open the door to faster deployments of Inference Systems with the TANK AIoT Dev. Kit via the Intel® Distribution of OpenVINO™ toolkit & Intel® Media SDK

TANK ACCELERATE TO THE FUTURE TANK-AIoT Dev. Kit

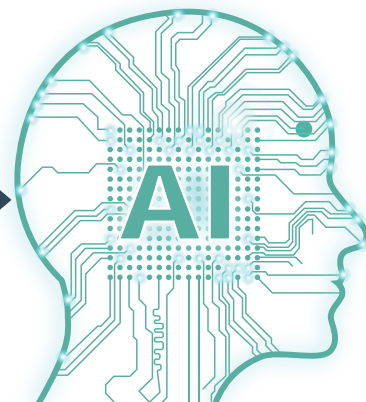


Mustang-F100-A10

Mustang-V100-MX8



- 6th/7th Gen Intel® Core™/Xeon® processor platform with Intel® Q170/C236 chipset and DDR4 memory
- Pre-install OpenVINO™ toolkit for AI inference acceleration
- Support Intel® CPU、GPU、FPGA、VPU acceleration

TANK AIoT Developer Kit

NEW



Feature

- 6th/7th Gen Intel® Core™/Xeon® processor platform with Intel® Q170/C236 chipset and DDR4 memory
- Dual independent display with high resolution support
- Rich high-speed I/O interfaces on one side for easy installation
- On-board internal power connector for providing power to add-on cards
- Great flexibility for hardware expansion
- Pre-installed Ubuntu 16.04 LTS
- Pre-installed Intel® Distribution of Open Visual Inference & Neural Network Optimization (OpenVINO™) toolkit, Intel® Media SDK, Intel® System Studio and Arduino® Create



Specifications

Model Name	TANK AIoT Dev. Kit
Chassis	
Color	Black C + Silver
Dimensions (WxDxH)	121.5 x 255.2 x 205 mm (4.7" x 10" x 8")
System Fan	Fan
Chassis Construction	Extruded aluminum alloys
Weight (Net/Gross)	4.2 kg (9.26 lbs) / 6.3 kg (13.89 lbs)
Motherboard	
CPU	Intel® Xeon® E3-1268LV5 2.4GHz (up to 3.4 GHz, Quad Core, TDP 35W) Intel® Core™ i7-7700T 2.9GHz (up to 3.8 GHz, Quad Core, TDP 35W) Intel® Core™ i5-7500T 2.7GHz (up to 3.3 GHz, Quad Core, TDP 35W) Intel® Core™ i7-6700TE 2.4 GHz (up to 3.4GHz, quad-core, TDP 35W) Intel® Core™ i5-6500TE 2.3 GHz (up to 3.3GHz, quad-core, TDP 35W)
Chipset	Intel® Q170/C236 with Xeon® E3 only
System Memory	2 x 260-pin DDR4 SO-DIMM, 8 GB pre-installed (for i5/i5KBL/i7 sku) 16 GB pre-installed (for i7KBL sku) 32 GB pre-installed (for E3 sku)
Storage	
Hard Drive	2 x 2.5" SATA 6Gb/s HDD/SSD bay, RAID 0/1 support (1x 2.5" 1TB HDD pre-installed)
I/O Interfaces	
USB 3.1 Gen 1	4
USB 2.0	4
Ethernet	2 x RJ-45 LAN1: Intel® I219LM PCIe controller with Intel® vPro™ support LAN2 (iRIS): Intel® I210 PCIe controller
COM Port	4 x RS-232 (2 x RJ-45, 2 x DB-9 w/2.5KV isolation protection) 2 x RS-232/422/485 (DB-9)

Digital I/O	8-bit digital I/O, 4-bit input / 4-bit output
Display	1 x VGA 1 x HDMI/DP 1 x iDP (optional)
Resolution	VGA: Up to 1920 x 1200@60Hz HDMI/DP: Up to 3840x2160@30Hz / 4096x2304@60Hz
Audio	1 x Line-out, 1 x Mic-in
TPM	1x Infineon TPM 2.0 Module
Expansions	
Backplane	2 x PCIe x8
PCIe Mini	1 x Half-size PCIe Mini slot 1 x Full-size PCIe Mini slot (supports mSATA, colay with SATA)
Power	
Power Input	DC Jack: 9 V~36 V DC Terminal Block: 9 V~36 V DC
Power Consumption	19 V@3.68 A (Intel® Core™ i7-6700TE with 8 GB memory)
Internal Power output	5V@3A or 12V@3A
Reliability	
Mounting	Wall mount
Operating Temperature	Xeon® E3 -20°C ~ 60°C with air flow (SSD), 10% ~ 95%, non-condensing i7-7700T -20°C ~ 35°C with air flow (SSD), 10% ~ 95%, non-condensing i5-7500T -20°C ~ 45°C with air flow (SSD), 10% ~ 95%, non-condensing i7-6700TE -20°C ~ 45°C with air flow (SSD), 10% ~ 95%, non-condensing i5-6500TE -20°C ~ 60°C with air flow (SSD), 10% ~ 95%, non-condensing
Operating Vibration	MIL-STD-810G 514.6 C-1 (with SSD)
Safety/EMC	CE/FCC/RoHS
OS	
Supported OS	Win10/Linux Ubuntu 16.04 LTS

Warning: DO NOT install the add-on card into the TANK AIoT Dev. Kit before shipment. It is recommended to ship them with their original boxes to prevent the add-on card from being damaged.

Ordering Information

Part No.	Description
TANK-870AI-E3/32G/2A-R11	Ruggedized embedded system with Intel® Xeon® E3-1268LV5 2.4GHz, (up to 3.4 GHz, Quad Core, TDP 35W), 32 GB DDR4 pre-installed memory, 2 x PCIe by 8 expansion, 2.5" 1TB HDD, TPM 2.0, 9~36V DC, 150W AC DC power adaptor, RoHS
TANK-870AI-E3/32G/2A/F-R11	Ruggedized embedded system with Intel® Xeon® E3-1268LV5 2.4GHz, (up to 3.4 GHz, Quad Core, TDP 35W), 32 GB DDR4 pre-installed memory, 2 x PCIe by 8 expansion, 2.5" 1TB HDD, TPM 2.0, 9~36V DC, 150W AC DC power adaptor, Mustang-F100, RoHS
TANK-870AI-E3/32G/2A/V-R11	Ruggedized embedded system with Intel® Xeon® E3-1268LV5 2.4GHz, (up to 3.4 GHz, Quad Core, TDP 35W), 32 GB DDR4 pre-installed memory, 2 x PCIe by 8 expansion, 2.5" 1TB HDD, TPM 2.0, 9~36V DC, 150W AC DC power adaptor, Mustang-V100, RoHS
TANK-870AI-i7KBL/16G/2A-R11	Ruggedized embedded system with Intel® Core™ i7-7700T 2.9GHz, (up to 3.8 GHz, Quad Core, TDP 35W), 16 GB DDR4 pre-installed memory, 2 x PCIe by 8 expansion, 2.5" 1TB HDD, TPM 2.0, 9~36V DC, 150W AC DC power adaptor, RoHS
TANK-870AI-i7KBL/16G/2A/F-R11	Ruggedized embedded system with Intel® Core i7-7700T 2.9GHz, (up to 3.8 GHz, Quad Core, TDP 35W), 16GB DDR4 pre-installed memory, 2 x PCIe by 8 expansion, 2.5" 1TB HDD, TPM 2.0, 9~36V DC, 150W AC DC power adaptor, Mustang-F100, RoHS
TANK-870AI-i7KBL/16G/2A/V-R11	Ruggedized embedded system with Intel® Core i7-7700T 2.9GHz, (up to 3.8 GHz, Quad Core, TDP 35W), 16GB DDR4 pre-installed memory, 2 x PCIe by 8 expansion, 2.5" 1TB HDD, TPM 2.0, 9~36V DC, 150W AC DC power adaptor, Mustang-V100, RoHS
TANK-870AI-i7/8G/2A-R11	Ruggedized embedded system with Intel® Core™ i7-6700TE 2.4GHz, (up to 3.4 GHz, Quad Core, TDP 35W), 8 GB DDR4 pre-installed memory, 2 x PCIe by 8 expansion, 2.5" 1TB HDD, TPM 2.0, 9~36V DC, 150W AC DC power adaptor, RoHS
TANK-870AI-i7/8G/2A/F-R11	Ruggedized embedded system with Intel® Core i7-6700TE 2.4GHz, (up to 3.4 GHz, Quad Core, TDP 35W), 8 GB DDR4 pre-installed memory, 2 x PCIe by 8 expansion, 2.5" 1TB HDD, TPM 2.0, 9~36V DC, 150W AC DC power adaptor, Mustang-F100, RoHS
TANK-870AI-i7/8G/2A/V-R11	Ruggedized embedded system with Intel® Core i7-6700TE 2.4GHz, (up to 3.4 GHz, Quad Core, TDP 35W), 8 GB DDR4 pre-installed memory, 2 x PCIe by 8 expansion, 2.5" 1TB HDD, TPM 2.0, 9~36V DC, 150W AC DC power adaptor, Mustang-V100, RoHS
TANK-870AI-i5KBL/8G/2A-R11	Ruggedized embedded system with Intel® Core™ i5-7500T 2.7GHz, (up to 3.3 GHz, Quad Core, TDP 35W), 8 GB DDR4 pre-installed memory, 2 x PCIe by 8 expansion, 2.5" 1TB HDD, TPM 2.0, 9~36V DC, 150W AC DC power adaptor, RoHS
TANK-870AI-i5KBL/8G/2A/F-R11	Ruggedized embedded system with Intel® Core i5-7500T 2.7GHz, (up to 3.3 GHz, Quad Core, TDP 35W), 8 GB DDR4 pre-installed memory, 2 x PCIe by 8 expansion, 2.5" 1TB HDD, TPM 2.0, 9~36V DC, 150W AC DC power adaptor, Mustang-F100, RoHS
TANK-870AI-i5KBL/8G/2A/V-R11	Ruggedized embedded system with Intel® Core i5-7500T 2.7GHz, (up to 3.3 GHz, Quad Core, TDP 35W), 8 GB DDR4 pre-installed memory, 2 x PCIe by 8 expansion, 2.5" 1TB HDD, TPM 2.0, 9~36V DC, 150W AC DC power adaptor, Mustang-V100, RoHS
TANK-870AI-i5/8G/2A-R11	Ruggedized embedded system with Intel® Core™ i5-6500TE 2.3GHz, (up to 3.3 GHz, Quad Core, TDP 35W), 8 GB DDR4 pre-installed memory, 2 x PCIe by 8 expansion, 2.5" 1TB HDD, TPM 2.0, 9~36V DC, 150W AC DC power adaptor, RoHS
TANK-870AI-i5/8G/2A/F-R11	Ruggedized embedded system with Intel® Core i5-6500TE 2.3GHz, (Up to 3.3 GHz, Quad Core, TDP 35W), 8 GB DDR4 pre-installed memory, 2 x PCIe by 8 expansion, 2.5" 1TB HDD, TPM 2.0, 9~36V DC, 150W AC DC power adaptor, Mustang-F100, RoHS
TANK-870AI-i5/8G/2A/V-R11	Ruggedized embedded system with Intel® Core i5-6500TE 2.3GHz, (Up to 3.3 GHz, Quad Core, TDP 35W), 8 GB DDR4 pre-installed memory, 2 x PCIe by 8 expansion, 2.5" 1TB HDD, TPM 2.0, 9~36V DC, 150W AC DC power adaptor, Mustang-V100, RoHS

AI Accelerator Card Options

Part No.	Description
Mustang-F100-A10-R10	PCIe FPGA Highest Performance Accelerator Card with Arria 10 1150GX support DDR4 2400Hz 8GB, PCIe Gen3 x8 interface, RoHS
Mustang-V100-MX8-R10	Computing Accelerator Card with 8 x Movidius Myriad X MA2485 VPU, PCIe Gen2 x4 interface, RoHS

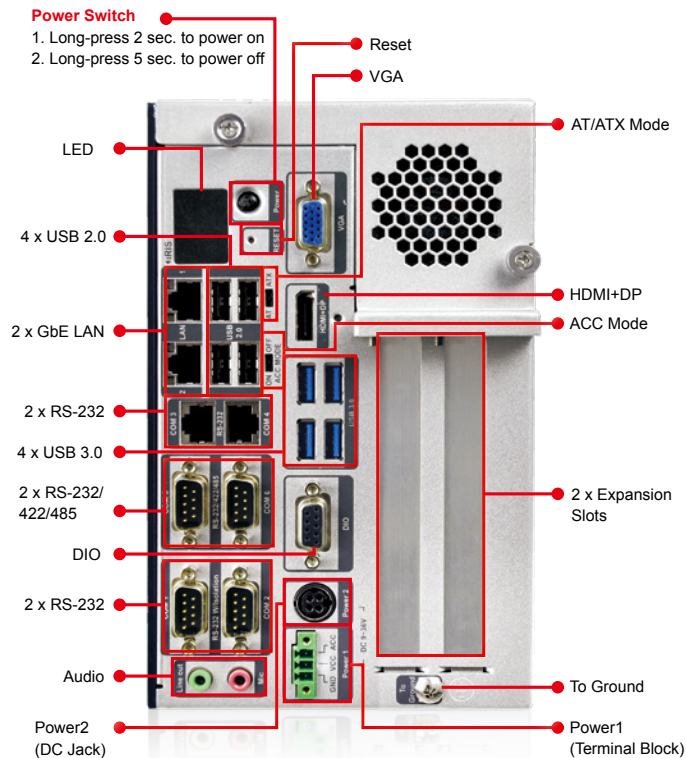
Peripheral Options

Part No.	Description
IPCIE-4POE-R10	PCI Express Power over ethernet card, 4-port 1000 Base(T), 802.3af compliant, RoHS
72213100-5010000-000-RS	2.5" HDD;WD;Caviar Blue;WD10SPZX;SATA3.0(6Gb/s, 600MB/s);1TB;128MB;5400 RPM;NoAssign;NoAssign;;CCL;RoHS

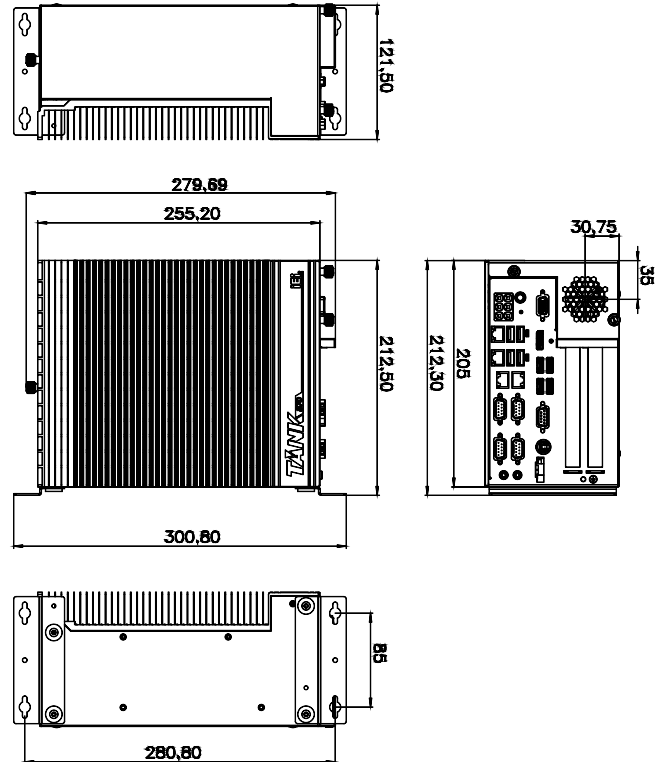
Packing List

1 x Chassis Screw	1 x 150W Adapter
1 x Mounting Bracket	1 x Power Cord
1 x QSG	

Fully integrated I/O



Dimensions (Unit:mm)



X-ON Electronics

Largest Supplier of Electrical and Electronic Components

Click to view similar products for [Embedded Box Computers](#) category:

Click to view products by [IEI](#) manufacturer:

Other Similar products are found below :

[tBOX312-870-FL-i7-DC](#) [tBOX313-835-FL-RJ-DC](#) [UPOS-3150-R0W0E](#) [ARK-20-S8A1E](#) [R2224WTTYSR](#) [BXNUC9i5QNX](#)
[BXNUC9i5QNX1](#) [BKNUC9V7QNX](#) [BKNUC9V7QNX1](#) [2-A0DF-2001](#) [BKCMB1ABB](#) [BKCMB1ABA](#) [EM3000-3845-8-128-WL-U-1](#)
[TANK-870AI-i5/8G/2A-R10](#) [PRFE21000038](#) [EM5000-I3-8-128-WL-W7-1](#) [EM3000-3845-8-128-WL-W7-1](#) [PRFE21000039](#) [AMOS-825-](#)
[1Q10A1](#) [UPS-EDAI-X70864-U01-DC01](#) [UPX-EDGEI7-A10-1664-F01](#) [MXE-211/M8G](#) [PXIe-3985/M16G](#) [PXIe-3987/M16G/SSD](#) [AIMB-](#)
[T1215DA-00Y0E](#) [AIMB-T12315A-00Y0E](#) [AMAX-5580-54000A](#) [APAX-5580-474AE](#) [ARK-6322-Q0A2E](#) [DS-100GF-S8A1E](#) [DS-100GL-](#)
[S8A1E](#) [EPC-R4680CQ-XAA1E](#) [ESRP-CSS-UNO2484](#) [ITA-1611-10A1E](#) [ITA-1711-10A1E](#) [MIC-710AI-00A1](#) [MIC-720AI-00A1](#) [UNO-247-](#)
[J1N1AE](#) [UTX-3115FS-S6A2E](#) [AMI220AF-4L-7500](#) [ELIT-1200](#) [AIE100-903-FL](#) [EBOX671-517-FL-DC](#) [MVS900-511-FL](#) [AMS200](#) [SE-92-](#)
[I7](#) [SI-606](#) [SI-60E](#) [TANK-760-HM86i-i5/4G-R10](#) [BKCM8i7CB8N](#)