

# TANK

ACCELERATE TO THE FUTURE

## AIoT Dev. Kit



The TANK AIoT Dev. Kit features rich I/O and dual PCIe x8 signals to support add-ons like the Acceleration cards (Mustang-F100-A10 & Mustang-V100-MX8) or the PoE card to enhance performance and function for various applications.

## » Integrate AI into IOT applications

Open the door to faster deployments of Inference Systems with the TANK AIoT Dev. Kit via the Intel® Distribution of OpenVINO™ toolkit & Intel® Media SDK

### TANK

ACCELERATE TO THE FUTURE

#### TANK-AIoT Dev. Kit

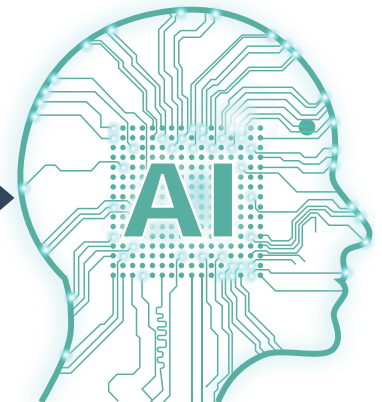





Mustang-F100-A10




Mustang-V100-MX8



- 6th/7th Gen Intel® Core™/Xeon® processor platform with Intel® Q170/C236 chipset and DDR4 memory
- Pre-install OpenVINO™ toolkit for AI inference acceleration
- Support Intel® CPU、GPU、FPGA、VPU acceleration

# TANK AIoT Developer Kit

NEW



## Feature

- 6th/7th Gen Intel® Core™/Xeon® processor platform with Intel® Q170/C236 chipset and DDR4 memory
- Dual independent display with high resolution support
- Rich high-speed I/O interfaces on one side for easy installation
- On-board internal power connector for providing power to add-on cards
- Great flexibility for hardware expansion
- Pre-installed Ubuntu 16.04 LTS
- Pre-installed Intel® Distribution of Open Visual Inference & Neural Network Optimization (OpenVINO™) toolkit, Intel® Media SDK, Intel® System Studio and Arduino® Create



## Specifications

Model Name	TANK AIoT Dev. Kit
<b>Chassis</b>	
Color	Black C + Silver
Dimensions (WxDxH)	121.5 x 255.2 x 205 mm (4.7" x 10" x 8")
System Fan	Fan
Chassis Construction	Extruded aluminum alloys
Weight (Net/Gross)	4.2 kg (9.26 lbs) / 6.3 kg (13.89 lbs)
<b>Motherboard</b>	
CPU	Intel® Xeon® E3-1268LV5 2.4GHz (up to 3.4 GHz, Quad Core, TDP 35W) Intel® Core™ i7-7700T 2.9GHz (up to 3.8 GHz, Quad Core, TDP 35W) Intel® Core™ i5-7500T 2.7GHz (up to 3.3 GHz, Quad Core, TDP 35W) Intel® Core™ i7-6700TE 2.4 GHz (up to 3.4GHz, quad-core, TDP 35W) Intel® Core™ i5-6500TE 2.3 GHz (up to 3.3GHz, quad-core, TDP 35W)
Chipset	Intel® Q170/C236 with Xeon® E3 only
System Memory	2 x 260-pin DDR4 SO-DIMM, 8 GB pre-installed (for i5/i5KBL/i7 sku) 16 GB pre-installed (for i7KBL sku) 32 GB pre-installed (for E3 sku)
<b>Storage</b>	
Hard Drive	2 x 2.5" SATA 6Gb/s HDD/SSD bay, RAID 0/1 support (1x 2.5" 1TB HDD pre-installed)
<b>I/O Interfaces</b>	
USB 3.1 Gen 1	4
USB 2.0	4
Ethernet	2 x RJ-45 LAN1: Intel® I219LM PCIe controller with Intel® vPro™ support LAN2 (iRIS): Intel® I210 PCIe controller
COM Port	4 x RS-232 (2 x RJ-45, 2 x DB-9 w/2.5KV isolation protection) 2 x RS-232/422/485 (DB-9)

Digital I/O	8-bit digital I/O, 4-bit input / 4-bit output
Display	1 x VGA 1 x HDMI/DP 1 x iDP (optional)
Resolution	VGA: Up to 1920 x 1200@60Hz HDMI/DP: Up to 3840x2160@30Hz / 4096x2304@60Hz
Audio	1 x Line-out, 1 x Mic-in
TPM	1x Infineon TPM 2.0 Module
<b>Expansions</b>	
Backplane	2 x PCIe x8
PCIe Mini	1 x Half-size PCIe Mini slot 1 x Full-size PCIe Mini slot (supports mSATA, colay with SATA)
<b>Power</b>	
Power Input	DC Jack: 9 V~36 V DC Terminal Block: 9 V~36 V DC
Power Consumption	19 V@3.68 A (Intel® Core™ i7-6700TE with 8 GB memory)
Internal Power output	5V@3A or 12V@3A
<b>Reliability</b>	
Mounting	Wall mount
Operating Temperature	Xeon® E3 -20°C ~ 60°C with air flow (SSD), 10% ~ 95%, non-condensing i7-7700T -20°C ~ 35°C with air flow (SSD), 10% ~ 95%, non-condensing i5-7500T -20°C ~ 45°C with air flow (SSD), 10% ~ 95%, non-condensing i7-6700TE -20°C ~ 45°C with air flow (SSD), 10% ~ 95%, non-condensing i5-6500TE -20°C ~ 60°C with air flow (SSD), 10% ~ 95%, non-condensing
Operating Vibration	MIL-STD-810G 514.6 C-1 (with SSD)
Safety/EMC	CE/FCC/RoHS
<b>OS</b>	
Supported OS	Win10/Linux Ubuntu 16.04 LTS

Warning: DO NOT install the add-on card into the TANK AIoT Dev. Kit before shipment. It is recommended to ship them with their original boxes to prevent the add-on card from being damaged.

## Ordering Information

Part No.	Description
TANK-870AI-E3/32G/2A-R11	Ruggedized embedded system with Intel® Xeon® E3-1268LV5 2.4GHz, (up to 3.4 GHz, Quad Core, TDP 35W), 32 GB DDR4 pre-installed memory, 2 x PCIe by 8 expansion, 2.5" 1TB HDD, TPM 2.0, 9~36V DC, 150W AC DC power adaptor, RoHS
TANK-870AI-E3/32G/2A/F-R11	Ruggedized embedded system with Intel® Xeon® E3-1268LV5 2.4GHz, (up to 3.4 GHz, Quad Core, TDP 35W), 32 GB DDR4 pre-installed memory, 2 x PCIe by 8 expansion, 2.5" 1TB HDD, TPM 2.0, 9~36V DC, 150W AC DC power adaptor, Mustang-F100, RoHS
TANK-870AI-E3/32G/2A/V-R11	Ruggedized embedded system with Intel® Xeon® E3-1268LV5 2.4GHz, (up to 3.4 GHz, Quad Core, TDP 35W), 32 GB DDR4 pre-installed memory, 2 x PCIe by 8 expansion, 2.5" 1TB HDD, TPM 2.0, 9~36V DC, 150W AC DC power adaptor, Mustang-V100, RoHS
TANK-870AI-i7KBL/16G/2A-R11	Ruggedized embedded system with Intel® Core™ i7-7700T 2.9GHz, (up to 3.8 GHz, Quad Core, TDP 35W), 16 GB DDR4 pre-installed memory, 2 x PCIe by 8 expansion, 2.5" 1TB HDD, TPM 2.0, 9~36V DC, 150W AC DC power adaptor, RoHS
TANK-870AI-i7KBL/16G/2A/F-R11	Ruggedized embedded system with Intel® Core i7-7700T 2.9GHz, (up to 3.8 GHz, Quad Core, TDP 35W), 16GB DDR4 pre-installed memory, 2 x PCIe by 8 expansion, 2.5" 1TB HDD, TPM 2.0, 9~36V DC, 150W AC DC power adaptor, Mustang-F100, RoHS
TANK-870AI-i7KBL/16G/2A/V-R11	Ruggedized embedded system with Intel® Core i7-7700T 2.9GHz, (up to 3.8 GHz, Quad Core, TDP 35W), 16GB DDR4 pre-installed memory, 2 x PCIe by 8 expansion, 2.5" 1TB HDD, TPM 2.0, 9~36V DC, 150W AC DC power adaptor, Mustang-V100, RoHS
TANK-870AI-i7/8G/2A-R11	Ruggedized embedded system with Intel® Core™ i7-6700TE 2.4GHz, (up to 3.4 GHz, Quad Core, TDP 35W), 8 GB DDR4 pre-installed memory, 2 x PCIe by 8 expansion, 2.5" 1TB HDD, TPM 2.0, 9~36V DC, 150W AC DC power adaptor, RoHS
TANK-870AI-i7/8G/2A/F-R11	Ruggedized embedded system with Intel® Core i7-6700TE 2.4GHz, (up to 3.4 GHz, Quad Core, TDP 35W), 8 GB DDR4 pre-installed memory, 2 x PCIe by 8 expansion, 2.5" 1TB HDD, TPM 2.0, 9~36V DC, 150W AC DC power adaptor, Mustang-F100, RoHS
TANK-870AI-i7/8G/2A/V-R11	Ruggedized embedded system with Intel® Core i7-6700TE 2.4GHz, (up to 3.4 GHz, Quad Core, TDP 35W), 8 GB DDR4 pre-installed memory, 2 x PCIe by 8 expansion, 2.5" 1TB HDD, TPM 2.0, 9~36V DC, 150W AC DC power adaptor, Mustang-V100, RoHS
TANK-870AI-i5KBL/8G/2A-R11	Ruggedized embedded system with Intel® Core™ i5-7500T 2.7GHz, (up to 3.3 GHz, Quad Core, TDP 35W), 8 GB DDR4 pre-installed memory, 2 x PCIe by 8 expansion, 2.5" 1TB HDD, TPM 2.0, 9~36V DC, 150W AC DC power adaptor, RoHS
TANK-870AI-i5KBL/8G/2A/F-R11	Ruggedized embedded system with Intel® Core i5-7500T 2.7GHz, (up to 3.3 GHz, Quad Core, TDP 35W), 8 GB DDR4 pre-installed memory, 2 x PCIe by 8 expansion, 2.5" 1TB HDD , TPM 2.0, 9~36V DC, 150W AC DC power adaptor, Mustang-F100, RoHS
TANK-870AI-i5KBL/8G/2A/V-R11	Ruggedized embedded system with Intel® Core i5-7500T 2.7GHz, (up to 3.3 GHz, Quad Core, TDP 35W), 8 GB DDR4 pre-installed memory, 2 x PCIe by 8 expansion, 2.5" 1TB HDD, TPM 2.0, 9~36V DC, 150W AC DC power adaptor, Mustang-V100, RoHS
TANK-870AI-i5/8G/2A-R11	Ruggedized embedded system with Intel® Core™ i5-6500TE 2.3GHz, (up to 3.3 GHz, Quad Core, TDP 35W), 8 GB DDR4 pre-installed memory, 2 x PCIe by 8 expansion, 2.5" 1TB HDD, TPM 2.0, 9~36V DC, 150W AC DC power adaptor, RoHS
TANK-870AI-i5/8G/2A/F-R11	Ruggedized embedded system with Intel® Core i5-6500TE 2.3GHz, (Up to 3.3 GHz, Quad Core, TDP 35W), 8 GB DDR4 pre-installed memory, 2 x PCIe by 8 expansion, 2.5" 1TB HDD, TPM 2.0, 9~36V DC, 150W AC DC power adaptor, Mustang-F100, RoHS
TANK-870AI-i5/8G/2A/V-R11	Ruggedized embedded system with Intel® Core i5-6500TE 2.3GHz, (Up to 3.3 GHz, Quad Core, TDP 35W), 8 GB DDR4 pre-installed memory, 2 x PCIe by 8 expansion, 2.5" 1TB HDD, TPM 2.0, 9~36V DC, 150W AC DC power adaptor, Mustang-V100, RoHS

### AI Accelerator Card Options

Part No.	Description
Mustang-F100-A10-R10	PCIe FPGA Highest Performance Accelerator Card with Arria 10 1150GX support DDR4 2400Hz 8GB, PCIe Gen3 x8 interface, RoHS
Mustang-V100-MX8-R10	Computing Accelerator Card with 8 x Movidius Myriad X MA2485 VPU, PCIe Gen2 x4 interface, RoHS

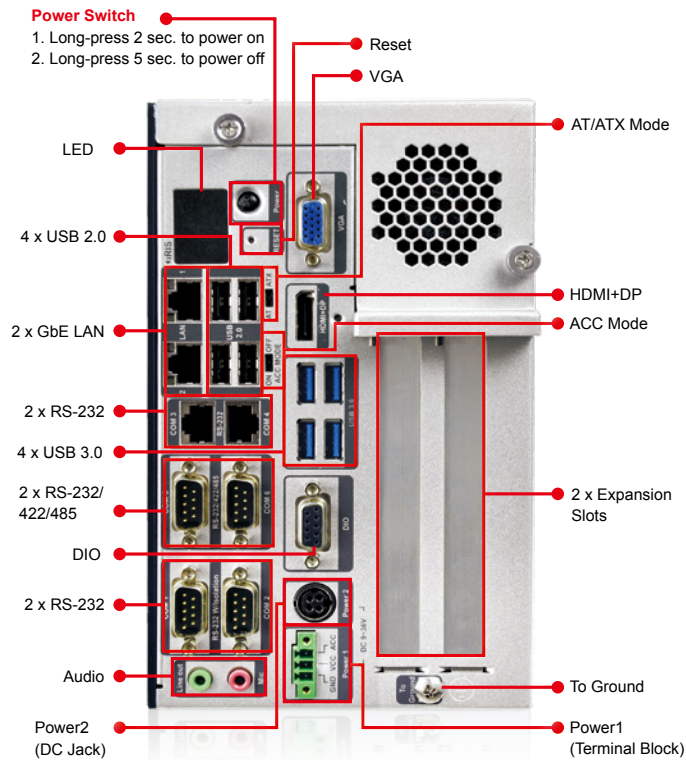
### Peripheral Options

Part No.	Description
IPCIE-4POE-R10	PCI Express Power over ethernet card, 4-port 1000 Base(T), 802.3af compliant, RoHS
72213100-5010000-000-RS	2.5" HDD;WD;Caviar Blue;WD10SPZX;SATA3.0(6Gb/s, 600MB/s);1TB;128MB;5400 RPM;NoAssign;NoAssign;;CCL;RoHS

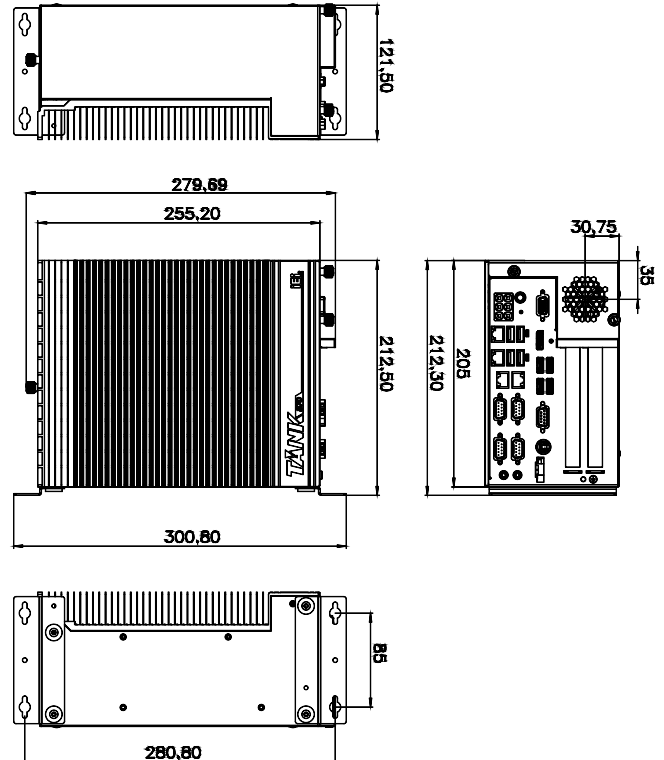
### Packing List

1 x Chassis Screw	1 x 150W Adapter
1 x Mounting Bracket	1 x Power Cord
1 x QSG	

### Fully integrated I/O



### Dimensions (Unit:mm)



## X-ON Electronics

Largest Supplier of Electrical and Electronic Components

*Click to view similar products for [Enclosures, Boxes, & Cases](#) category:*

*Click to view products by [IEI](#) manufacturer:*

Other Similar products are found below :

[CR-425 PAINTED](#) [585-R-WH-PK](#) [M-10-PLATED](#) [60221-01](#) [60566-01-000](#) [HPL-9VB BATT DOOR](#) [M-16-LID-PLATED](#) [M18-PLTD](#) [M-21-LID-PLATED](#) [M-21-PLATED](#) [M-23-PLATED](#) [CU-281-MB](#) [6711GSKT](#) [71884-29-028](#) [LH45-100 Black](#) [7200B](#) [72868-510-000](#) [CNS-0000 Black](#) [72883-510-000](#) [CNS-0101 Black](#) [72906-510-000](#) [CNS-0407 Black](#) [73091-510-000](#) [CNM-0000-BLACK Kit](#) [73092-510-000](#) [CNM-0101 Black](#) [73108-510-000](#) [CNL-0303 Black](#) [73395-510-039](#) [CNS-0006 Bone](#) [74257-510-000](#) [CNL-0004](#) [MDC-1183-PLAIN-ALUM](#) [MDC-1183-PTD](#) [MDC-13104-PLAIN-ALUM](#) [MDC-211 - PAINTED IVORY/BEIGE](#) [MDC-321-PTD](#) [MDC-432-PLAIN-ALUM](#) [MDC-973-PTD](#) [76](#) [77153-01-028](#) [FLX6030](#) [83535-01-508](#) [PS-11296-G](#) [PS-11298-B](#) [116-508](#) [120-407](#) [120-412](#) [120-909](#) [120-455](#) [R272-100-000](#) [120-910](#) [R501-001-010](#) [R508-080-000](#) [R508-160-000](#) [R530-120-000](#) [R530-122-000](#) [R530-200-000](#) [R531-160-000](#) [R531-200-000](#) [R582-080-100](#)