



## iglidur<sup>®</sup> maintenance-free flange bearings

Very good wear resistance

---

Maintenance-free dry running

---

Lightweight

---

Standard range from stock

---

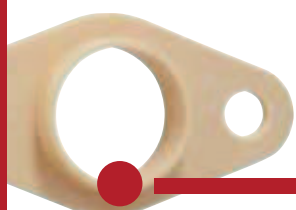


# iglidur® flange bearings | Advantages

## Maintenance-free dry running



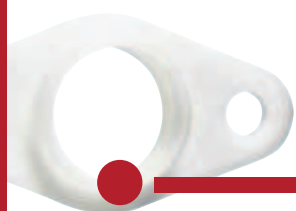
**iglidur® G:**  
Standard material for  
many applications



**iglidur® J:**  
Material for low wear



**iglidur® X:**  
Material for high tempe-  
rature applications



**iglidur® A180:**  
Material for use in the  
food sector

## iglidur® maintenance-free flange bearings

With this design it is possible to use iglidur® high performance plain bearings in locations where recommended housing bore tolerances are not possible. Due to the design of the bearing, high loads are possible although there is a minimal precision requirement of the housing.

- Very good wear resistance
- Lightweight
- Lubrication-free

### Installation

For low radial loads, it is sufficient to mount iglidur® flange bearings on one surface simply with two bolts. For higher radial loads, it is advisable to support the iglidur® flange bearing in a hole. For this hole, large tolerances are permitted, since it serves only as additional support for the iglidur® flange bearing. In order to achieve higher radial loads in the bearings, the iglidur® flange bearing can be press-fit into a recommended housing bore with H7 tolerances. The additional bolts ensure the fit of the bearing in the housing.



### Available from stock

Detailed information about delivery time online.



### Depending on material:

iglidur® G: -40 °C up to +130 °C  
 iglidur® J: -50 °C up to +90 °C  
 iglidur® X: -100 °C up to +250 °C  
 iglidur® A180: -50 °C up to +90 °C



### Material properties:

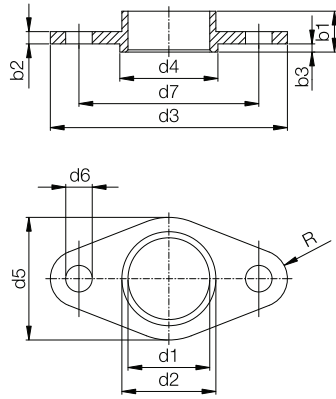
iglidur® G ▶ Page 79  
 iglidur® J ▶ Page 141  
 iglidur® X ▶ Page 237  
 iglidur® A180 ▶ Page 349



1 type, 4 materials  
 Ø 10–35 mm

More dimensions on request

## Flange bearings



### Order key

Type

Size [mm]

## G FL-10

iglidur® material

Flange bearings

Inner Ø

#### Options:

iglidur® material

G: iglidur® G

J: iglidur® J

X: iglidur® X

A180: iglidur® A180

### Dimensions [mm]

d1	d1-Tolerance <sup>3)</sup>	d2 <sup>13)</sup>	d3	d4	d5	d6	d7	b1	b2	b3	R	Part No.
											(±0.2)	
10	+0.025 +0.083	12	30	14	15	4.5	22	6	2	1	4	<b>GFL-10</b>
12	+0.032 +0.102	14	36	16	18	4.5	26	6	2	1	4.5	<b>GFL-12</b>
14	+0.032 +0.102	16	42	18	21	5.5	30	6	2	1	5	<b>GFL-14</b>
16	+0.032 +0.102	18	48	20	24	5.5	34	6	2	1	5.5	<b>GFL-16</b>
18	+0.032 +0.102	20	54	22	27	6.5	39	6	2	1	7	<b>GFL-18</b>
20	+0.040 +0.124	23	60	26	30	6.5	44	10	3	2	7	<b>GFL-20</b>
25	+0.040 +0.124	28	75	30	35	6.5	55	10	3	2	8.5	<b>GFL-25</b>
30	+0.040 +0.124	34	90	36	40	8.5	66	10	3	2	10	<b>GFL-30</b>
35	+0.050 +0.150	39	95	41	55	8.5	77	10	3	2	12	<b>GFL-35</b>
10	+0.025 +0.083	12	30	14	15	4.5	22	6	2	1	4	<b>JFL-10</b>
12	+0.032 +0.102	14	36	16	18	4.5	26	6	2	1	4.5	<b>JFL-12</b>
14	+0.032 +0.102	16	42	18	21	5.5	30	6	2	1	5	<b>JFL-14</b>
16	+0.032 +0.102	18	48	20	24	5.5	34	6	2	1	5.5	<b>JFL-16</b>
20	+0.040 +0.124	23	60	26	30	6.5	44	10	3	2	7	<b>JFL-20</b>
25	+0.040 +0.124	28	75	30	35	6.5	55	10	3	2	8.5	<b>JFL-25</b>
30	+0.040 +0.124	34	90	36	40	8.5	66	10	3	2	10	<b>JFL-30</b>
35	+0.050 +0.150	39	95	41	55	8.5	77	10	3	2	12	<b>JFL-35</b>
10	+0.013 +0.071	12	30	14	15	4.5	22	6	2	1	4	<b>XFL-10</b>
12	+0.016 +0.086	14	36	16	18	4.5	26	6	2	1	4.5	<b>XFL-12</b>
14	+0.016 +0.086	16	42	18	21	5.5	30	6	2	1	5	<b>XFL-14</b>
16	+0.016 +0.086	18	48	20	24	5.5	34	6	2	1	5.5	<b>XFL-16</b>
20	+0.020 +0.104	23	60	26	30	6.5	44	10	3	2	7	<b>XFL-20</b>
25	+0.020 +0.104	28	75	30	35	6.5	55	10	3	2	8.5	<b>XFL-25</b>
30	+0.020 +0.104	34	90	36	40	8.5	66	10	3	2	10	<b>XFL-30</b>
35	+0.025 +0.125	39	95	41	55	8.5	77	10	3	2	12	<b>XFL-35</b>
10	+0.025 +0.083	12	30	14	15	4.5	22	6	2	1	4	<b>A180FL-10</b>
12	+0.032 +0.102	14	36	16	18	4.5	26	6	2	1	4.5	<b>A180FL-12</b>
16	+0.032 +0.102	18	48	20	24	5.5	34	6	2	1	5.5	<b>A180FL-16</b>
20	+0.040 +0.124	23	60	26	30	6.5	44	10	3	2	7	<b>A180FL-20</b>
25	+0.040 +0.124	28	75	30	35	6.5	55	10	3	2	8.5	<b>A180FL-25</b>
30	+0.040 +0.124	34	90	36	40	8.5	66	10	3	2	10	<b>A180FL-30</b>
35	+0.050 +0.150	39	95	41	55	8.5	77	10	3	2	12	<b>A180FL-35</b>

<sup>3)</sup> After press-fit. Testing methods ► Page 57 <sup>13)</sup> Press-fit in H7 tolerance housing bore

## X-ON Electronics

Largest Supplier of Electrical and Electronic Components

*Click to view similar products for [Other Tools](#) category:*

*Click to view products by [Iigus](#) manufacturer:*

Other Similar products are found below :

[899-2-KT46](#) [568681-1](#) [CR-12FP4--260R](#) [5800-0090](#) [58061-1](#) [59085](#) [00-8273-RDPP](#) [593033](#) [593072](#) [593564100](#) [593575](#) [593593](#) [010-0003-0000](#) [011349-000](#) [CRCW08052740FRT1](#) [LUC-012S070DSM](#) [LUC-018S070DSP](#) [LUC-024S105DSP](#) [599-2021-3-NME](#) [599-JJ-2021-03](#) [CRCW2010331JR02](#) [601-JJ-06](#) [601-SPB](#) [601YSY](#) [602-JJ-03](#) [602SPB](#) [603-JJ-07-FP](#) [603-JJY-04](#) [CRTN1013](#) [CS16](#) [6-1579014-0](#) [62036240-1](#) [M43435 TY 1 SZ 3 FIN B BLK](#) [M43435 TY 2 SZ 3 FIN C BLK](#) [M-5Z](#) [M6816](#) [660-29ABT1](#) [662508-1](#) [CVHD-950X-93.333](#) [CW104-01X](#) [671-GP-04-KT39-73207](#) [CW307-01A](#) [CW30901A](#) [CW6211201A](#) [679793-1](#) [690191-1](#) [690191-3](#) [690317-2](#) [691409-4](#)