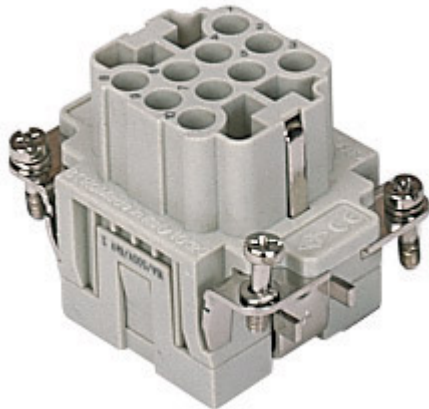




Item code

CQEF 10



Brief description:

female insert, 10 poles + PE, crimp connections, 16A, 500V, 6kV, 3, size "44.27", CLASS insert series

Product description		Approvals / Standards	
Model	female insert	Reference standard	EN 61984 (2001-11)
Version	crimp connections	Quality mark	 , EAC
Series	CQE	Conformity	CQC, CE
Product type	for female contacts 16A	General ordering information	
Family	CLASS inserts	EAN code	8015747037044
Size	size "44.27"	Tariff number	85369095
N° of poles	10 poles + 	Country of origin	Made in EU (IT)
Technical data		ETIM classification	EC000438
Current	16 A (A.C. and D.C.)	Packaging Information	
Voltage	500 V	Packaging length	210,00 mm
Sustained impulse voltage	6kV	Packaging height	130,00 mm
Pollution degree	3	Packaging width	240,00 mm
Operating temperature range (min, max)	-40°C ... +125°C	Packaging weight	2,52 kg
Plugging cycles	≥ 500	Packaging volume	6,55 dm ³
IP degree of protection	IP20 without enclosure; IP65/IP66/IP67/IP68 with enclosure	Packaging description	Carton box
Wire cross section PE	0,14 - 4 mm ² ; AWG 20 - 12	Packaging quantity	60 Pcs
Other technical details		Packaging EAN code	8015747208772
Characteristics according to EN61984	16A 500V 6kV 3; 16A 830V 8kV 2	Sub-packaging weight	0,42 kg
Insulation resistance	≥ 10 GΩ	Sub-packaging description	Carton
Rated voltage according to UL/CSA	600V	Sub-packaging quantity	10 Pcs
UL 94 flammability rating	V-0	Sub-packaging EAN barcode	8015747037051
Weight	42,00 g		

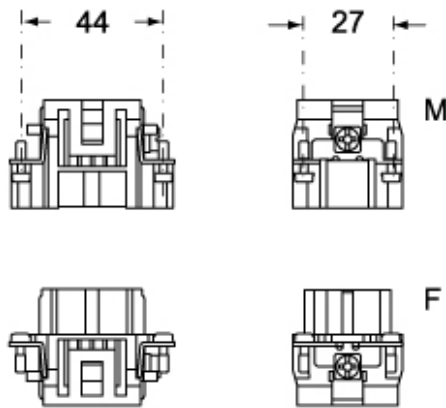
Item code

CQEF 10

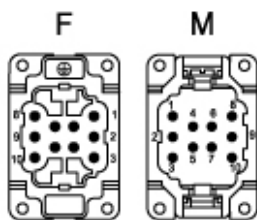


Catalogue drawings

CQEM 10

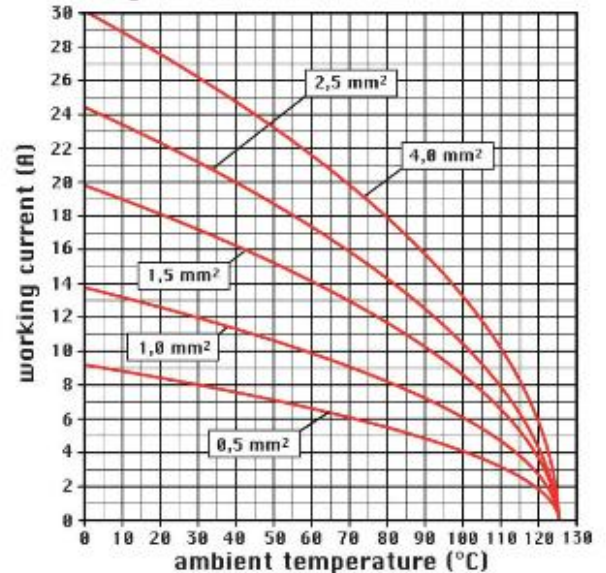


CQEF 10



Catalogue drawings

diagram CQE 10 poles



Notes

CQEF/M 10 inserts:

- characteristics according to EN 61984:
(16A 500V 6kV 3)
(16A 830V) 8kV 2)
- rated voltage according to UL/CSA: 600V
- insulation resistance: > 10 GOhm
- ambient temperature limit: -40 °C ... +125 °C
- are made of self-extinguishing thermoplastic resin UL 94 V0
- mechanical life: > 500 cycles
- contact resistance: < 1 mOhm
- for contact crimping instructions, please see the crimping tool section (16A contacts, CCF, CCM and CC...AN series) .
- enclosures: size "44.27":
C-TYPE IP65/IP66
C7 IP67 stainless steel lever
V-TYPE IP65/IP66
stainless steel lever
T-TYPE IP65 insulating
JEI zinc-plated steel lever
BIG hoods
W-TYPE aggressive environments
EMC

central lever
IP68
panel supports: page:COB

X-ON Electronics

Largest Supplier of Electrical and Electronic Components

Click to view similar products for [Heavy Duty Power Connectors](#) category:

Click to view products by [ILME](#) manufacturer:

Other Similar products are found below :

[6646058-2](#) [6646137-1](#) [6646138-1](#) [6646940-1](#) [6651091-1](#) [6651525-1](#) [6651529-1](#) [696475-1](#) [702-32-01109](#) [73000005059](#) [73080254296](#)
[73080965046](#) [7310205040001](#) [765-15-0080A](#) [765-16-0080B](#) [765-18-0080D](#) [PS00/A0620/6300](#) [129-1J](#) [E6374G1](#) [157-43GW8](#) [MS3117-](#)
[14AC](#) [1643543-1](#) [1766966-1](#) [1791340000](#) [NLDFT-3-BL-L-S120-M40A](#) [NLDFT-N-W-L-C240-M40B](#) [1926015-1](#) [NLS-N-W-C240-M40B](#) [2-](#)
[1589900-8](#) [2199314-1](#) [KA8102](#) [9300480317](#) [294-0091-01100](#) [296-0040-01100](#) [1648582-1](#) [A32595-0049](#) [1766249-1](#) [1766280-1](#) [1766818-1](#)
[AN0264023](#) [279-0841-10100A](#) [30-9717](#) [RMSB4](#) [4729](#) [492H414-9-01](#) [BSB5](#) [419-2083-301](#) [LCDX4/0-14B-X](#) [075-8519-001](#) [078238-1613](#)