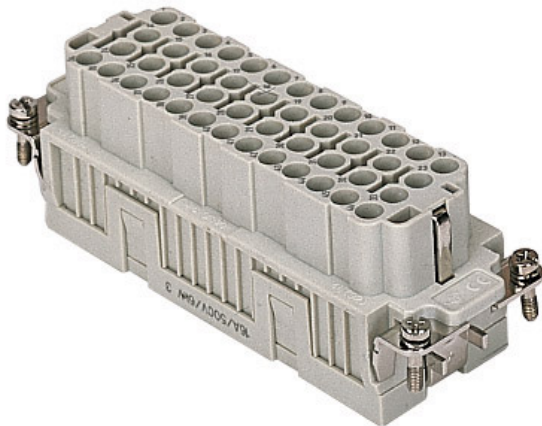


Item code


# CQEF 46



## Brief description:

female insert, 46 poles + PE, crimp connections, 16A 500V, 6kV, 3, size "104.27", CLASS insert series

### Product description

|                     |  |
|---------------------|--|
| <b>Model</b>        | female insert  |
| <b>Version</b>      | crimp connections  |
| <b>Series</b>       | CQE  |
| <b>Product type</b> | for female inserts 16A   |
| <b>Family</b>       | CLASS inserts  |
| <b>Size</b>         | size "104.27"  |
| <b>N° of poles</b>  | 46 poles +  |




### Technical data

|   |  |
|---|--|
| <b>Current</b>                                | 16 A (A.C. and D.C.)                                       |
| <b>Voltage</b>                                | 500 V  |
| <b>Sustained impulse voltage</b>              | 6kV  |
| <b>Pollution degree</b>                       | 3  |
| <b>Operating temperature range (min, max)</b> | -50°C ... +70°C  |
| <b>Plugging cycles</b>                        | ≥ 200  |
| <b>IP degree of protection</b>                | IP20 without enclosure; IP65/IP66/IP67/IP68 with enclosure |
| <b>Wire cross section PE</b>                  | 0,14 - 4 mm <sup>2</sup> ; AWG 20 - 12                     |

### Other technical details

|   |                                |
|---|--------------------------------|
| <b>Characteristics according to EN61984</b> | 16A 500V 6kV 3; 16A 830V 8kV 2 |
| <b>Insulation resistance</b>                | ≥ 1 GΩ                         |
| <b>Rated voltage according to UL/CSA</b>    | 600V                           |
| <b>UL 94 flammability rating</b>            | V-0                            |
| <b>Weight</b>                               | 85,00 g                        |

### Approvals / Standards

|                           |   |
|---------------------------|---|
| <b>Reference standard</b> | EN 61984 (2001-11)  |
| <b>Quality mark</b>       |    , EAC |
| <b>Conformity</b>         | CQC, CE   |

### General ordering information

|                            |                 |
|----------------------------|-----------------|
| <b>EAN code</b>            | 8015747037129   |
| <b>Tariff number</b>       | 85369095        |
| <b>Country of origin</b>   | Made in EU (IT) |
| <b>ETIM classification</b> | EC000438        |

### Packaging Information

|                                  |                      |
|----------------------------------|----------------------|
| <b>Packaging length</b>          | 210,00 mm            |
| <b>Packaging height</b>          | 130,00 mm            |
| <b>Packaging width</b>           | 240,00 mm            |
| <b>Packaging weight</b>          | 2,94 kg              |
| <b>Packaging volume</b>          | 6,55 dm <sup>3</sup> |
| <b>Packaging description</b>     | Carton box           |
| <b>Packaging quantity</b>        | 30 Pcs               |
| <b>Packaging EAN code</b>        | 8015747208833        |
| <b>Sub-packaging weight</b>      | 0,49 kg              |
| <b>Sub-packaging description</b> | Carton               |
| <b>Sub-packaging quantity</b>    | 5 Pcs                |
| <b>Sub-packaging EAN barcode</b> | 8015747037136        |

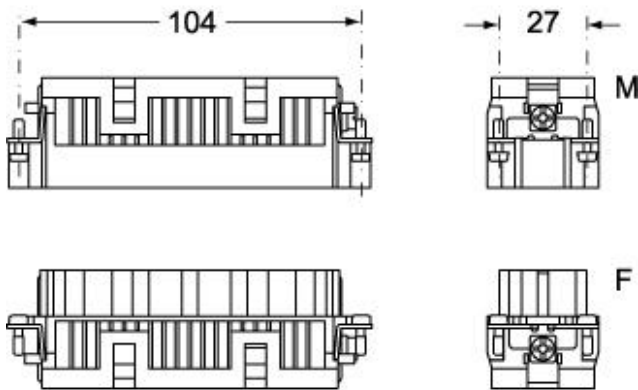
Item code

# CQEF 46

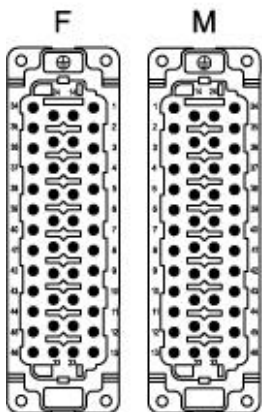


## Catalogue drawings

### CQEM 46

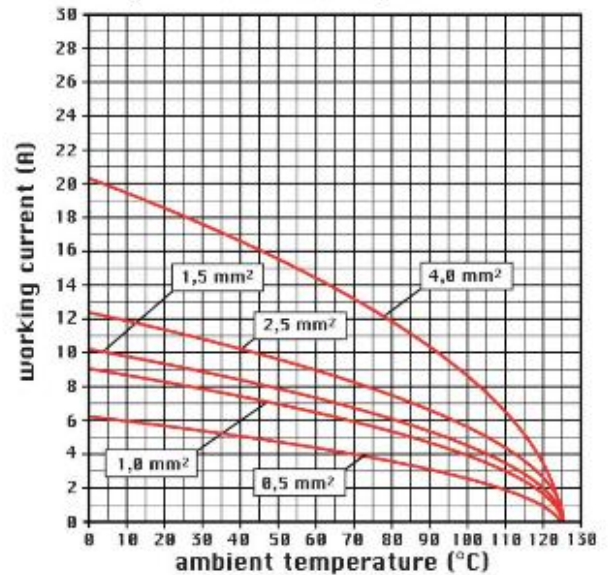


### CQEF 46



## Catalogue drawings

diagram CQE 46 and 92 poles



## Notes

CQEF/M 46 inserts:

- characteristics according to EN 61984:  
(16A 500V 6kV 3)  
(16A 830V) 8kV 2)
- rated voltage according to UL/CSA: 600V
- insulation resistance: > 10 GOhm
- ambient temperature limit: -40 °C ... +125 °C
- are made of self-extinguishing thermoplastic resin  
UL 94 V0
- mechanical life: > 500 cycles
- contact resistance: < 1 mOhm
- for contact crimping instructions, please see the crimping tool section (16A contacts, CCF, CCM and CC...AN series) .
- enclosures: size "104.27":  
C-TYPE IP65/IP66  
C7 IP67 stainless steel lever

- V-TYPE IP65/IP66  
stainless steel lever
- T-TYPE IP65 insulating
- JEI zinc-plated steel lever
- BIG hoods
- W-TYPE aggressive environments
- EMC
- central lever
- IP68
- panel supports: page:COB

## X-ON Electronics

Largest Supplier of Electrical and Electronic Components

*Click to view similar products for [Heavy Duty Power Connectors](#) category:*

*Click to view products by [ILME](#) manufacturer:*

Other Similar products are found below :

[6646058-2](#) [6646137-1](#) [6646138-1](#) [6646940-1](#) [6651091-1](#) [6651525-1](#) [6651529-1](#) [696475-1](#) [702-32-01109](#) [73000005059](#) [73080254296](#)  
[73080965046](#) [7310205040001](#) [765-15-0080A](#) [765-16-0080B](#) [765-18-0080D](#) [PS00/A0620/6300](#) [129-1J](#) [E6374G1](#) [157-43GW8](#) [MS3117-](#)  
[14AC](#) [1643543-1](#) [1766966-1](#) [1791340000](#) [NLDFT-3-BL-L-S120-M40A](#) [NLDFT-N-W-L-C240-M40B](#) [1926015-1](#) [NLS-N-W-C240-M40B](#) [2-](#)  
[1589900-8](#) [2199314-1](#) [KA8102](#) [9300480317](#) [294-0091-01100](#) [296-0040-01100](#) [1648582-1](#) [A32595-0049](#) [1766249-1](#) [1766280-1](#) [1766818-1](#)  
[AN0264023](#) [279-0841-10100A](#) [30-9717](#) [RMSB4](#) [4729](#) [492H414-9-01](#) [BSB5](#) [419-2083-301](#) [LCDX4/0-14B-X](#) [075-8519-001](#) [078238-1613](#)