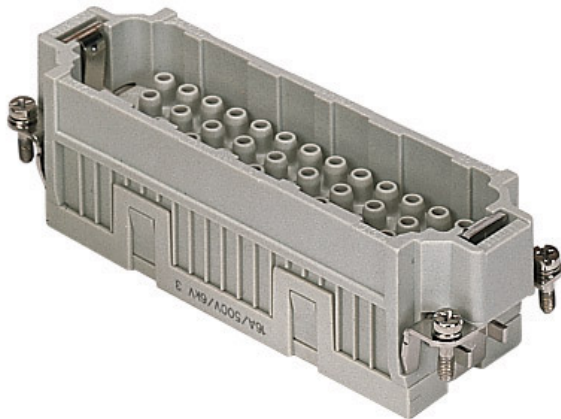


Item code

# CQEM 46



## Brief description:

male insert, 46 poles + PE, crimp connections, 16A 500V, 6kV, 3, size "104.27", CLASS insert series

### Product description

Model	male insert
Version	crimp connections
Series	CQE
Product type	for male contacts 16A
Family	CLASS inserts
Size	size "104.27"
N° of poles	46 poles +

### Technical data

Current	16 A (A.C. and D.C.)
Voltage	500 V
Sustained impulse voltage	6kV
Pollution degree	3
Operating temperature range (min, max)	-50°C ... +70°C
Plugging cycles	≥ 200
IP degree of protection	IP20 without enclosure; IP65/IP66/IP67/IP68 with enclosure
Wire cross section PE	0,14 - 4 mm <sup>2</sup> ; AWG 20 - 12

### Other technical details

Characteristics according to EN61984	16A 500V 6kV 3; 16A 830V 8kV 2
Insulation resistance	≥ 1 GΩ
Rated voltage according to UL/CSA	600V
UL 94 flammability rating	V-0
Weight	80,00 g

### Approvals / Standards

Reference standard	EN 61984 (2001-11)
Quality mark	, EAC
Conformity	CQC, CE

### General ordering information

EAN code	8015747037242
Tariff number	85369095
Country of origin	Made in EU (IT)
ETIM classification	EC000438

### Packaging Information

Packaging length	210,00 mm
Packaging height	130,00 mm
Packaging width	240,00 mm
Packaging weight	2,40 kg
Packaging volume	6,55 dm <sup>3</sup>
Packaging description	Carton box
Packaging quantity	30 Pcs
Packaging EAN code	8015747208840
Sub-packaging weight	0,40 kg
Sub-packaging description	Carton
Sub-packaging quantity	5 Pcs
Sub-packaging EAN barcode	8015747037259

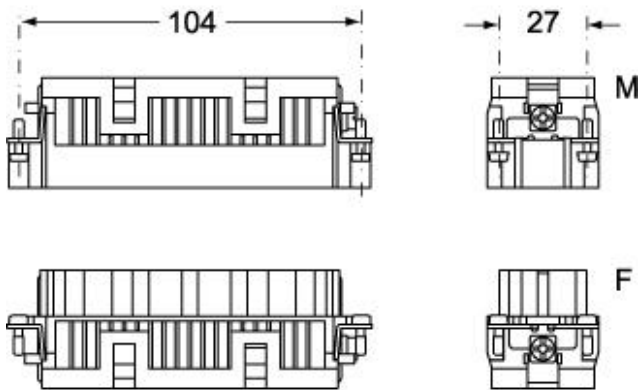
Item code

# CQEM 46

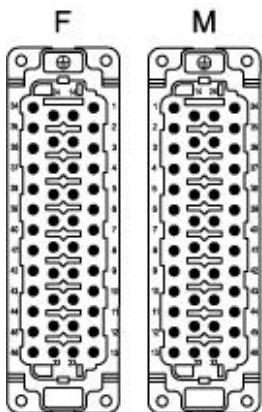


## Catalogue drawings

### CQEM 46

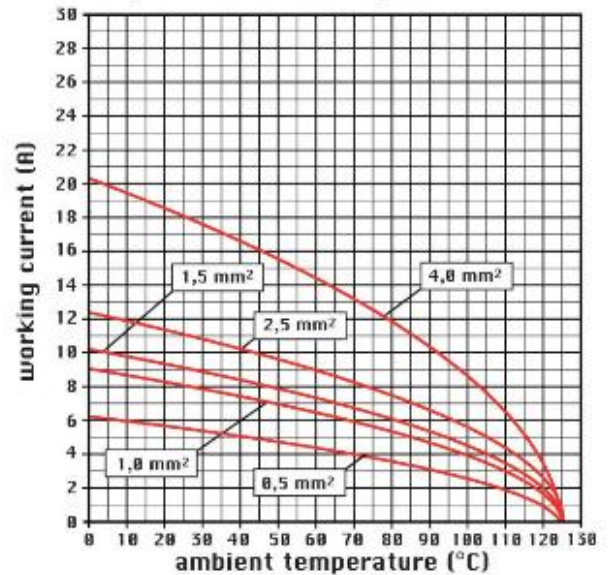


### CQEF 46



## Catalogue drawings

diagram CQE 46 and 92 poles



## Notes

CQEF/M 46 inserts:

- characteristics according to EN 61984:  
(16A 500V 6kV 3)  
(16A 830V) 8kV 2)
- rated voltage according to UL/CSA: 600V
- insulation resistance: > 10 GOhm
- ambient temperature limit: -40 °C ... +125 °C
- are made of self-extinguishing thermoplastic resin  
UL 94 V0
- mechanical life: > 500 cycles
- contact resistance: < 1 mOhm
- for contact crimping instructions, please see the crimping tool  
section (16A contacts, CCF, CCM and CC...AN series) .
- enclosures: size "104.27":  
C-TYPE IP65/IP66  
C7 IP67 stainless steel lever

- V-TYPE IP65/IP66  
stainless steel lever
- T-TYPE IP65 insulating
- JEI zinc-plated steel lever
- BIG hoods
- W-TYPE aggressive environments
- EMC
- central lever
- IP68
- panel supports: page:COB

## X-ON Electronics

Largest Supplier of Electrical and Electronic Components

*Click to view similar products for [Heavy Duty Power Connectors](#) category:*

*Click to view products by [ILME](#) manufacturer:*

Other Similar products are found below :

[6646058-2](#) [6646137-1](#) [6646138-1](#) [6646940-1](#) [6651091-1](#) [6651525-1](#) [6651529-1](#) [696475-1](#) [702-32-01109](#) [73000005059](#) [73080254296](#)  
[73080965046](#) [7310205040001](#) [765-15-0080A](#) [765-16-0080B](#) [765-18-0080D](#) [PS00/A0620/6300](#) [129-1J](#) [E6374G1](#) [157-43GW8](#) [MS3117-](#)  
[14AC](#) [1643543-1](#) [1766966-1](#) [1791340000](#) [NLDFT-3-BL-L-S120-M40A](#) [NLDFT-N-W-L-C240-M40B](#) [1926015-1](#) [NLS-N-W-C240-M40B](#) [2-](#)  
[1589900-8](#) [2199314-1](#) [KA8102](#) [9300480317](#) [294-0091-01100](#) [296-0040-01100](#) [1648582-1](#) [A32595-0049](#) [1766249-1](#) [1766280-1](#) [1766818-1](#)  
[AN0264023](#) [279-0841-10100A](#) [30-9717](#) [RMSB4](#) [4729](#) [492H414-9-01](#) [BSB5](#) [419-2083-301](#) [LCDX4/0-14B-X](#) [075-8519-001](#) [078238-1613](#)