

INDUSTRIAL SOCKET OUTLETS

Best quality-price balance



IB6/FC Series

- IP66 degree of protection
- mechanical resistance: IK 10
- insulating enclosure
- 16A, 32A, 63A models
- installation: single wall mount or with FC series
- cable entry: top or rear
- bottom plug entry
- versions: without fuses; with fuses; with transformer

page 32

Extremely robust



TM Series

- IP66/IP67 degree of protection
- mechanical resistance: IK 10
- insulating enclosure, robust construction
- 16A, 32A, 63A models
- installation: wall / flush mount
- cable entry: top, bottom or rear
- bottom plug entry
- versions: without fuses; with fuses; with transformer

page 47

SQV/FM Series



- IP44/IP55 degree of protection
- mechanical resistance: 6 J
- insulating enclosure
- 16A, 32A models
- installation: wall / flush mount
- cable entry: top or rear
- plug entry 15° angled
- versions: without fuses; with fuses; with transformer

page 73

TM Ex Series



- IP66/IP67 degree of protection
- mechanical resistance: IK 10
- insulating enclosure, robust construction
- 16A, 32A, 63A models
- installation: wall mount
- cable entry: top or rear
- bottom plug entry
- versions: without fuses; with fuses

page 64

FM PI/PQ Series



- IP44 and IP55 degree of protection
- mechanical resistance: 6 J
- insulating enclosure
- 16A, 32A, Schuko®
- modular

page 77

TM PI Series



- IP44 and IP66/IP67 degree of protection
- mechanical resistance: IK 10
- insulating enclosure, robust construction
- 16A, 32A models
- installation: wall / flush mount
- cable entry: top, bottom or rear
- plug entry 15° angled
- versions: standard PLUSO plugs

page 59

PB5 Series, die-cast aluminium alloy



- IP55 degree of protection
- mechanical resistance: IK 10
- die-cast aluminium alloy enclosure
- 16A, 32A, 63A, 125A models
- installation: wall mount
- cable entry: top or rear
- bottom plug entry
- versions: without fuses; with fuses; with transformer

page 39

BK Series



- IP66/IP67 degree of protection
- mechanical resistance: IK 10
- UL 94 V0 insulating enclosure
- 16A, 32A, 63A models
- installation: wall / flush mount
- cable entry: top, bottom or rear
- plug entry: front
- versions: without fuses; with fuses; with transformer

page 91



EB6 socket-outlets for industrial purposes low voltage

- in compliance with standards EN 60309-1, -2 and -4
- enclosures and inserts in insulating thermoplastic self-extinguishing material colour grey RAL 7035
- M25 threaded cable entry (16A/32A), M40 (63A)
- with bayonet lid

- double mechanical interlock that prevents: turning the switch to the "ON" position when the plug is not inserted and withdrawing the plug when the switch is at the "ON" position
- 63A: with pilot contact
- mechanical resistance to impacts: 20 J (IK 10 in compliance with EN 62262)
- with Italian Quality Mark

picture

ILME part No.

description

packaging

low voltage
interlocked switched socket-outlets without fuse carrier
insulating enclosure - IP66 (CEI EN 60529)



NEW



16A ○

NEW



32A ○

NEW



63A ●

100÷130V ~ - 50 and 60 Hz - yellow			
KI 1643 EB6	16A - 2P + ⊕	- 4h ● - M25 - ⊕	1
KI 1644 EB6	16A - 3P + ⊕	- 4h ● - M25 - ⊕	1
KI 1645 EB6	16A - 3P + N + ⊕	- 4h ● - M25 - ⊕	1
KI 3243 EB6	32A - 2P + ⊕	- 4h ● - M25 - ⊕	1
KI 3244 EB6	32A - 3P + ⊕	- 4h ● - M25 - ⊕	1
KI 3245 EB6	32A - 3P + N + ⊕	- 4h ● - M25 - ⊕	1
KI 6343 EB6	63A - 2P + ⊕	- 4h ● - M40 - ⊕	1
KI 6344 EB6	63A - 3P + ⊕	- 4h ● - M40 - ⊕	1
KI 6345 EB6	63A - 3P + N + ⊕	- 4h ● - M40 - ⊕	1
200÷250V ~ - 50 and 60 Hz - blue			
KI 1663 EB6	16A - 2P + ⊕	- 6h ● - M25 - ⊕◇	1
KI 1694 EB6	16A - 3P + ⊕	- 9h ● - M25 - ⊕	1
KI 1695 EB6	16A - 3P + N + ⊕	- 9h ● - M25 - ⊕	1
KI 3263 EB6	32A - 2P + ⊕	- 6h ● - M25 - ⊕◇	1
KI 3294 EB6	32A - 3P + ⊕	- 9h ● - M25 - ⊕	1
KI 3295 EB6	32A - 3P + N + ⊕	- 9h ● - M25 - ⊕	1
KI 6363 EB6	63A - 2P + ⊕	- 6h ● - M40 - ⊕◇	1
KI 6394 EB6	63A - 3P + ⊕	- 9h ● - M40 - ⊕	1
KI 6395 EB6	63A - 3P + N + ⊕	- 9h ● - M40 - ⊕	1
380÷415V ~ - 50 and 60 Hz - red			
KI 1693 EB6	16A - 2P + ⊕	- 9h ● - M25 - ⊕	1
KI 1664 EB6	16A - 3P + ⊕	- 6h ● - M25 - ⊕◇	1
KI 1665 EB6	16A - 3P + N + ⊕	- 6h ● - M25 - ⊕◇	1
KI 3293 EB6	32A - 2P + ⊕	- 9h ● - M25 - ⊕	1
KI 3264 EB6	32A - 3P + ⊕	- 6h ● - M25 - ⊕◇	1
KI 3265 EB6	32A - 3P + N + ⊕	- 6h ● - M25 - ⊕◇	1
KI 6393 EB6	63A - 2P + ⊕	- 9h ● - M40 - ⊕	1
KI 6364 EB6	63A - 3P + ⊕	- 6h ● - M40 - ⊕◇	1
KI 6365 EB6	63A - 3P + N + ⊕	- 6h ● - M40 - ⊕◇	1
480÷500V ~ - 50 and 60 Hz - black			
KI 1674 EB6	16A - 3P + ⊕	- 7h ● - M25 - ⊕	1
KI 1675 EB6	16A - 3P + N + ⊕	- 7h ● - M25 - ⊕	1
KI 3274 EB6	32A - 3P + ⊕	- 7h ● - M25 - ⊕	1
KI 3275 EB6	32A - 3P + N + ⊕	- 7h ● - M25 - ⊕	1
KI 6374 EB6	63A - 3P + ⊕	- 7h ● - M40 - ⊕	1
KI 6375 EB6	63A - 3P + N + ⊕	- 7h ● - M40 - ⊕	1

◇ The articles with hour position 6h refer to the rated voltage (2P+⊕/220÷250V ~ - 3P+⊕ and 3P+N+⊕/380÷415V ~)

spare switches

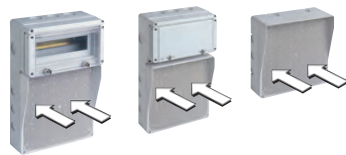
for KI...EB6 socket-outlets

PKR 432	4 x 32A - for 16A/32A socket-outlets - 3/4/5 poles	1
PKR 480 KI6	4 x 80A - for 63A socket-outlets - 3/4/5 poles	1



Accessories for box systems

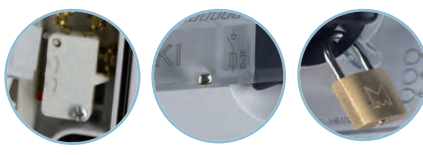
FC 2542 RAT FC 2542 RA FC 2525 MU



(page 86-87)

Accessories

KI MICRO KI SCREW KI BLC



(page 35)

Assembled modular bases

FC 2241 DT * (page 41) FC 2545 DT (page 41) FC 2853 DT ** (page 41)



*for 16A-32A

**

** for 63A

DT - Assembled modular bases

FC 2957 DTS FC 2957 DTM FC 2957 DTL



(page 35) 16A/32A 63A

DC - Assembled modular bases

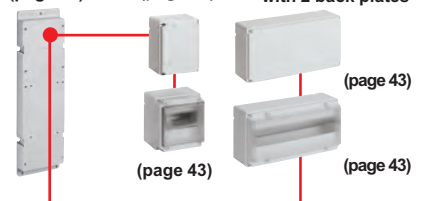
FC 2957 DCS FC 2957 DCM FC 2957 DCL



(page 35) 16A/32A 63A

Accessories for socket-outlet combinations

back plates (page 41) with 1 back plate (page 43) with 2 back plates (page 43)





IB6
socket-outlets
for industrial purposes
low voltage

- in compliance with standards EN 60309-1, -2 and -4
- enclosures and inserts in insulating thermoplastic self-extinguishing material colour grey RAL 7035
- M25 threaded cable entry (16A/32A), M40 (63A)
- with bayonet lid

- double mechanical interlock that prevents: turning the switch to the "ON" position when the plug is not inserted and withdrawing the plug when the switch is at the "ON" position
- 63A: with pilot contact
- mechanical resistance to impacts: 20 J (IK 10 in compliance with EN 62262)
- with Italian Quality Mark

picture ILME description packaging
part No.

interlocked switched socket-outlets with sectionable fuse carrier
insulating enclosure - IP66 (CEI EN 60529)

fuses not provided - padlockable switch
100÷130V ~ - 50 and 60 Hz - yellow

KI 1643 IB6	16A - 2P + ⊕ - 4h ● - fuse carrier 10 x 38 - M25 - ⊕	1
KI 1644 IB6	16A - 3P + ⊕ - 4h ● - fuse carrier 10 x 38 - M25 - ⊕	1
KI 1645 IB6	16A - 3P + N + ⊕ - 4h ● - fuse carrier 10 x 38 - M25 - ⊕	1
KI 3243 IB6	32A - 2P + ⊕ - 4h ● - fuse carrier 10 x 38 - M25 - ⊕	1
KI 3244 IB6	32A - 3P + ⊕ - 4h ● - fuse carrier 10 x 38 - M25 - ⊕	1
KI 3245 IB6	32A - 3P + N + ⊕ - 4h ● - fuse carrier 10 x 38 - M25 - ⊕	1
KI 6343 IB6	63A - 2P + ⊕ - 4h ● - fuse carrier 22 x 58 - M40 - ⊕	1
KI 6344 IB6	63A - 3P + ⊕ - 4h ● - fuse carrier 22 x 58 - M40 - ⊕	1
KI 6345 IB6	63A - 3P + N + ⊕ - 4h ● - fuse carrier 22 x 58 - M40 - ⊕	1

200÷250V ~ - 50 and 60 Hz - blue

KI 1663 IB6	16A - 2P + ⊕ - 6h ● - fuse carrier 10 x 38 - M25 - ⊕ ◇	15
KI 1694 IB6	16A - 3P + ⊕ - 9h ● - fuse carrier 10 x 38 - M25 - ⊕	1
KI 1695 IB6	16A - 3P + N + ⊕ - 9h ● - fuse carrier 10 x 38 - M25 - ⊕	1
KI 3263 IB6	32A - 2P + ⊕ - 6h ● - fuse carrier 10 x 38 - M25 - ⊕ ◇	8
KI 3294 IB6	32A - 3P + ⊕ - 9h ● - fuse carrier 10 x 38 - M25 - ⊕	1
KI 3295 IB6	32A - 3P + N + ⊕ - 9h ● - fuse carrier 10 x 38 - M25 - ⊕	1
KI 6363 IB6	63A - 2P + ⊕ - 6h ● - fuse carrier 22 x 58 - M40 - ⊕ ◇	1
KI 6394 IB6	63A - 3P + ⊕ - 9h ● - fuse carrier 22 x 58 - M40 - ⊕	1
KI 6395 IB6	63A - 3P + N + ⊕ - 9h ● - fuse carrier 22 x 58 - M40 - ⊕	1

380÷415V ~ - 50 and 60 Hz - red

KI 1693 IB6	16A - 2P + ⊕ - 9h ● - fuse carrier 10 x 38 - M25 - ⊕	1
KI 1664 IB6	16A - 3P + ⊕ - 6h ● - fuse carrier 10 x 38 - M25 - ⊕ ◇	15
KI 1665 IB6	16A - 3P + N + ⊕ - 6h ● - fuse carrier 10 x 38 - M25 - ⊕ ◇	15
KI 3293 IB6	32A - 2P + ⊕ - 9h ● - fuse carrier 10 x 38 - M25 - ⊕	1
KI 3264 IB6	32A - 3P + ⊕ - 6h ● - fuse carrier 10 x 38 - M25 - ⊕ ◇	8
KI 3265 IB6	32A - 3P + N + ⊕ - 6h ● - fuse carrier 10 x 38 - M25 - ⊕ ◇	8
KI 6393 IB6	63A - 2P + ⊕ - 9h ● - fuse carrier 22 x 58 - M40 - ⊕	1
KI 6364 IB6	63A - 3P + ⊕ - 6h ● - fuse carrier 22 x 58 - M40 - ⊕ ◇	1
KI 6365 IB6	63A - 3P + N + ⊕ - 6h ● - fuse carrier 22 x 58 - M40 - ⊕ ◇	1

480÷500V ~ - 50 and 60 Hz - black

KI 1674 IB6	16A - 3P + ⊕ - 7h ● - fuse carrier 10 x 38 - M25 - ⊕	1
KI 1675 IB6	16A - 3P + N + ⊕ - 7h ● - fuse carrier 10 x 38 - M25 - ⊕	1
KI 3274 IB6	32A - 3P + ⊕ - 7h ● - fuse carrier 10 x 38 - M25 - ⊕	1
KI 3275 IB6	32A - 3P + N + ⊕ - 7h ● - fuse carrier 10 x 38 - M25 - ⊕	1
KI 6374 IB6	63A - 3P + ⊕ - 7h ● - fuse carrier 22 x 58 - M40 - ⊕	1
KI 6375 IB6	63A - 3P + N + ⊕ - 7h ● - fuse carrier 22 x 58 - M40 - ⊕	1

◇ The articles with hour position 6h refer to the rated voltage (2P+⊕/220÷250V ~ - 3P+⊕ and 3P+N+⊕/380÷415V ~)



16A ○



32A ○



63A ●

NEW

NEW

NEW



16A - 32A



63A

spare switches

for KI...IB6 socket-outlets

PKR 432 ZF	4 x 32A - for 16A/32A socket-outlets - 3/4/5 poles (with fuse carrier)	1
-------------------	--	---

PKR 480 KI6	4 x 80A - for 63A socket-outlets - 3/4/5 poles (without fuse carrier)	1
--------------------	---	---



IB6L
socket-outlets
for industrial purposes
low voltage

- in compliance with standards EN 60309-1, -2 and -4
- enclosures and inserts in insulating thermoplastic self-extinguishing material colour grey RAL 7035
- M25 threaded cable entry (16A/32A), M40 (63A)
- with bayonet lid

- double mechanical interlock that prevents: turning the switch to the "ON" position when the plug is not inserted and withdrawing the plug when the switch is at the "ON" position
- 63A: with pilot contact
- mechanical resistance to impacts: 20 J (IK 10 in compliance with EN 62262)

picture

ILME
part No.

description

packaging



NEW



16A - 32A

interlocked switched socket-outlets with sectionable fuse carrier, with LEDs^(*)
insulating enclosure - IP66 (CEI EN 60529) protection of degree

fuses not provided - padlockable switch

200÷250V ~ - 50 and 60 Hz - blue

KI 1663 IB6L	16A - 2P + ⊕ - 6h ● - fuse carrier 10 x 38 - M25 ◇	15
KI 3263 IB6L	32A - 2P + ⊕ - 6h ● - fuse carrier 10 x 38 - M25 ◇	8
380÷415V ~ - 50 and 60 Hz - red		
KI 1664 IB6L	16A - 3P + ⊕ - 6h ● - fuse carrier 10 x 38 - M25 ◇	15
KI 1665 IB6L	16A - 3P + N + ⊕ - 6h ● - fuse carrier 10 x 38 - M25 ◇	15
KI 3264 IB6L	32A - 3P + ⊕ - 6h ● - fuse carrier 10 x 38 - M25 ◇	8
KI 3265 IB6L	32A - 3P + N + ⊕ - 6h ● - fuse carrier 10 x 38 - M25 ◇	8

◇ for fuses maintenance

◇ The articles with hour position 6h refer to the rated voltage (2P+⊕/220÷250V ~ - 3P+⊕ and 3P+N+⊕/380÷415V ~)



16A - 32A

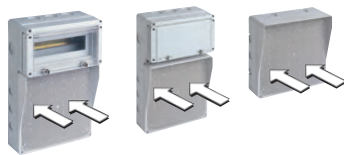
spare switches

for KI...IB6L socket-outlets

PKR 432 ZF	4 x 32A - for 16A/32A socket-outlets - 3/4/5 poles (with fuse carrier)	1
-------------------	--	---

Accessories for box systems

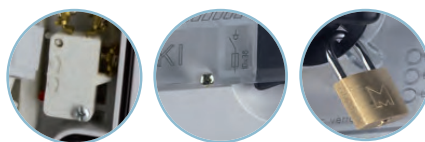
FC 2542 RAT FC 2542 RA FC 2525 MU



(page 86-87)

Accessories

KI MICRO KI SCREW KI BLC



(page 35)

Assembled modular bases

FC 2241 DT * (page 41) FC 2545 DT (page 41) FC 2853 DT ** (page 41)



*for 16A-32A

**

** for 63A

DT - Assembled modular bases

FC 2957 DTS FC 2957 DTM FC 2957 DTL



(page 35)

↔ 16A/32A

↔ 63A

DC - Assembled modular bases

FC 2957 DCS FC 2957 DCM FC 2957 DCL



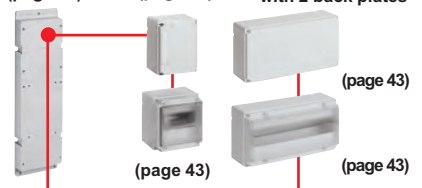
(page 35)

↔ 16A/32A

↔ 63A

Accessories for socket-outlet combinations

back plates (page 41) with 1 back plate (page 43) with 2 back plates



(page 43)

(page 43)



FC accessories for socket-outlet combinations

picture	ILME part No.	description	packaging
---------	---------------	-------------	-----------

NEW



accessories for the assembly of interlocked switched socket outlets with insulating enclosure

assembled modular bases for modular assembly

FC 2957 DTS	for socket-outlets (N. 2 IB6/EB6 16A-32A)	1
FC 2957 DTM	for socket-outlets (N. 1 IB6/EB6 16A-32A + N. 1 IB6/EB6 63A)	1
FC 2957 DTL	for socket-outlets (N. 2 IB6/EB6 63A)	1
composed of:		
- back-plates and box		
predisposed for the assembly of:		
- 16A/32A-63A interlocked switched socket-outlet IB6/EB6 series		
max. dimensions 290 x 532 x 145 mm		
insulating thermoplastic self-extinguishing material grey RAL 7035		
IP66 (CEI EN 60529)		
provided with:		
- sized DIN-rail EN 60715		
- a series of small plates to close unused spaces		
- metric junctions for fixing interlocked socket-outlets		

NEW



assembled modular bases with junction box

FC 2957 DCS	for socket-outlets (N. 2 IB6/EB6 16A-32A)	1
FC 2957 DCM	for socket-outlets (N. 1 IB6/EB6 16A-32A + N. 1 IB6/EB6 63A)	1
FC 2957 DCL	for socket-outlets (N. 2 IB6/EB6 63A)	1
composed of:		
- back-plates and box		
predisposed for the assembly of:		
- 16A/32A-63A interlocked switched socket-outlet IB6/EB6 series		
max. dimensions 290 x 532 x 145 mm		
insulating thermoplastic self-extinguishing material grey RAL 7035		
IP66 (CEI EN 60529)		
provided with:		
- metric junctions for fixing interlocked socket-outlets		



accessories

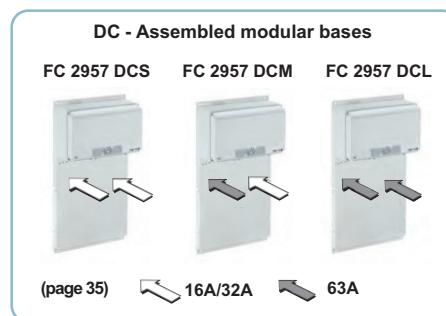
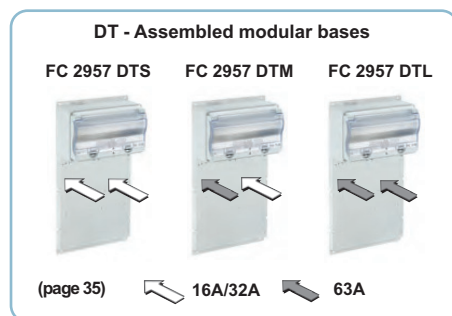
KI SCREW	screw for fuse carrier cover	50
KI MICRO	microswitch indicating insertion status of plug and/or socket-outlet switch	1
FC M25 6.5 ¹⁾	hole coupling kit - Pg/Metric - KI 16/32A IB6/EB6	1
FC M40 6.5 ¹⁾	hole coupling kit - Pg/Metric - KI 63A IB6/EB6	1

¹⁾ for adapting IB6/EB6 metric hole to DB5/GB5 boxes formerly installed and Pg holed



padlock kit

KI BLC 16	for 16A-32A-63A socket-outlets IB6/EB6 series	1
------------------	---	---



X-ON Electronics

Largest Supplier of Electrical and Electronic Components

Click to view similar products for [ILME manufacturer](#):

Other Similar products are found below :

[JCVI 10](#) [JCVP 06 L](#) [JNEF 06](#) [JNEF 10](#) [JNEF 16](#) [CAOR 06 L21](#) [CRM](#) [MAPR 16.32](#) [MAVR 10.32](#) [TAPC 06 L25](#) [MHV 06 L20](#) [MHV 10.20](#)
[JCVI 16](#) [JCVP 10](#) [JCVP 16](#) [JNEM 10](#) [TAPC 10.25](#) [TAPW 06 L25](#) [PE3264SV](#) [MHO24L25](#) [CNEF 24 T](#) [CKSHF 04](#) [COB 06 CMS](#) [MHV](#)
[10 L25](#) [MAO 16 L32](#) [MHO 06 L25](#) [MHP 48 LS50](#) [PEW3265PV](#) [CQEM18](#) [CCPZTP](#) [MHO 32 L40](#) [TAPH 10.32](#) [TAVC 24 G40](#) [MHO](#)
[16.25](#) [THCH 06 LG](#) [THIW 16](#) [PE1664SV](#) [CAP 24 CS29](#) [CDDM72](#) [CDDF72](#) [CQEF32](#) [CHO 16 X](#) [TAVC 10 G32](#) [TAPH 16.32](#) [THIH 06 L](#)
[PE3265PV](#) [CHC10LG](#) [AS C36T](#) [CDMD0.5](#) [CXM 4/8](#)