

Engineer Drawing

NOTES:

MATERIAL:

- 1: HOUSING: THERMO-PLASTIC. UL 94V-0 NATURE
- 2: CONTACT: PHOSPHOR BRONZE
- CONTACT: SEE ORDER INFORMATION;

SOLDER: GOLD FLASH

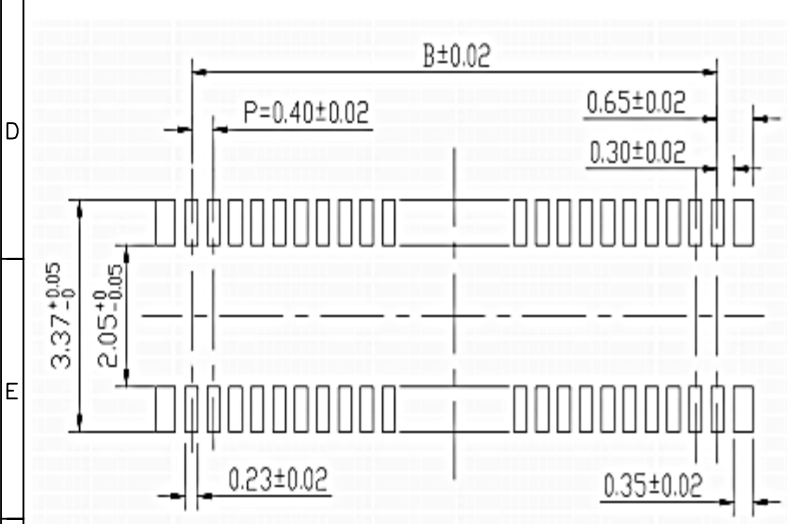
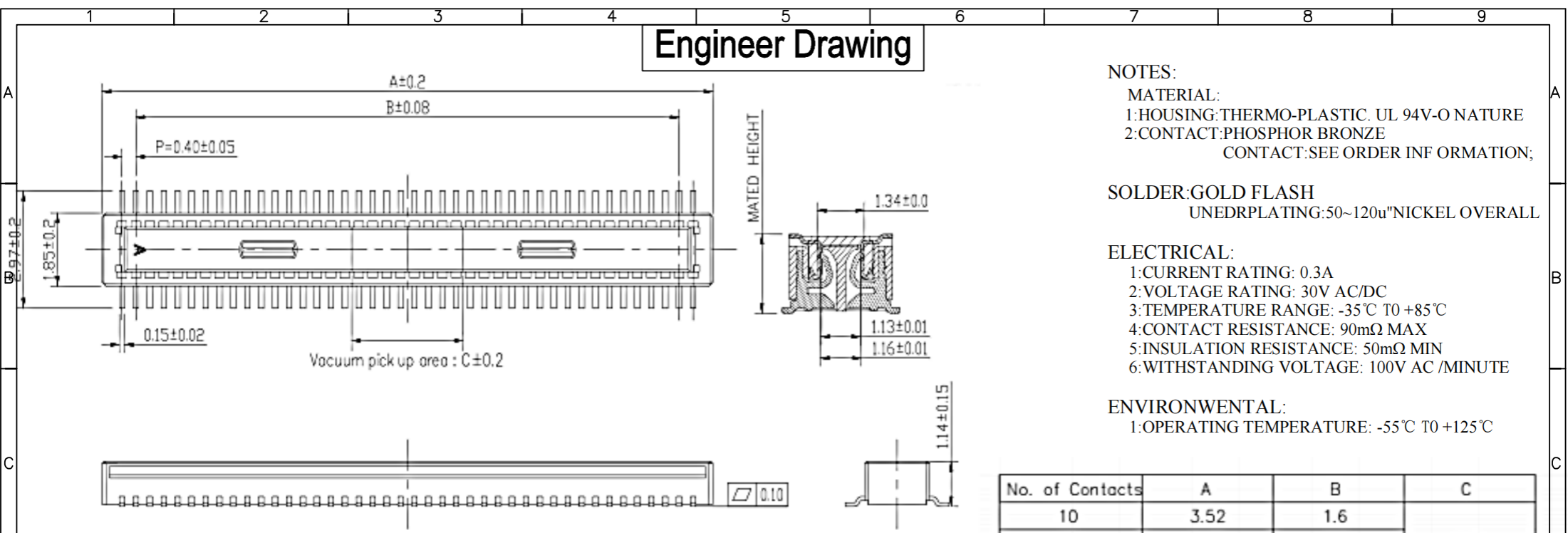
UNEDRPLATING: 50~120u" NICKEL OVERALL

ELECTRICAL:

- 1: CURRENT RATING: 0.3A
- 2: VOLTAGE RATING: 30V AC/DC
- 3: TEMPERATURE RANGE: -35°C TO +85°C
- 4: CONTACT RESISTANCE: 90mΩ MAX
- 5: INSULATION RESISTANCE: 50mΩ MIN
- 6: WITHSTANDING VOLTAGE: 100V AC /MINUTE

ENVIRONMENTAL:

- 1: OPERATING TEMPERATURE: -55°C TO +125°C



IPC B 04 * * * * * * *

- ①
- ②
- ③
- ④
- ⑤
- ⑥
- ⑦
- ⑧

- ① Series Type
- ② Pitch
- ③ Height
- ④ Serial Code
- ⑤ Connector Type
- ⑥ Pin Code
- ⑦ Internal Code
- ⑧ Other Code

No. of Contacts	A	B	C
10	3.52	1.6	1.0
12	3.92	2.0	
20	5.52	3.6	
24	6.32	4.4	1.2
30	7.52	5.6	1.5
34	8.32	6.4	2.3
40	9.52	7.6	3.2
44	10.32	8.4	
50	11.52	9.6	
60	13.52	11.6	
70	15.52	13.6	
80	17.52	15.6	
90	19.52	17.6	
100	21.52	19.6	

Recommended PC board pattern
(TOP VIEW)

GENERAL TOLERANCE

- .X : ± 0.35
- .XX : ± 0.25
- .XXX : ± 0.10
- ANGLES : $\pm 1^\circ$



www.i-ncp.com

PART NO:
IPC B04151M xx

NAME

Pitch 0.40mm BTB MALE

DRAWING NO
IPC B04xx1M 07



SHEET 1 OF 1

UNITS: mm

SCALE: 1:1

REV. 01

X-ON Electronics

Largest Supplier of Electrical and Electronic Components

Click to view similar products for [Board to Board & Mezzanine Connectors](#) category:

Click to view products by [INCP](#) manufacturer:

Other Similar products are found below :

[589158040000018](#) [MDF7C-18P-2.54DSA\(55\)](#) [FCN-268F036-G/BD](#) [FCN-268M012-G/0D](#) [FCN-268M024-G/1D](#) [MIS-048-01-F-D-DP-K](#)
[832-10-034-10-001000](#) [FX4C-80S-1.27DSA](#) [93696-330](#) [224393](#) [FCN-235D050-G/C](#) [210-93-314-41-105000](#) [MDF7-40DP-2.54DSA\(55\)](#)
[55323-1519](#) [069159702701000](#) [101A10019X](#) [105061100000861+](#) [75140-7012](#) [87471-650](#) [1744382-4](#) [063209](#) [10124054-515LF](#) [68685-603](#)
[8-1616154-3](#) [541371078](#) [IL-WX-10PB-HF-B-E1000E](#) [FX23-40P-0.5SV15B](#) [FCN-214J100-G/0](#) [354184](#) [P50-028-DDS-TG](#) [53309-2471](#)
[54546-2071](#) [1586617-1](#) [504248-1210](#) [504248-2010](#) [1-1437355-2](#) [9159005551906](#) [NDS100-004-BF](#) [93696-730LF](#) [91922-31141LF](#) [505274-](#)
[3440](#) [501493-2410](#) [504208-3410](#) [505006-0811](#) [505274-2040](#) [202436-1600](#) [202477-0414](#) [71660-7580](#) [73420-5192](#) [360-10-107-00-001000](#)