

Engineer Drawing

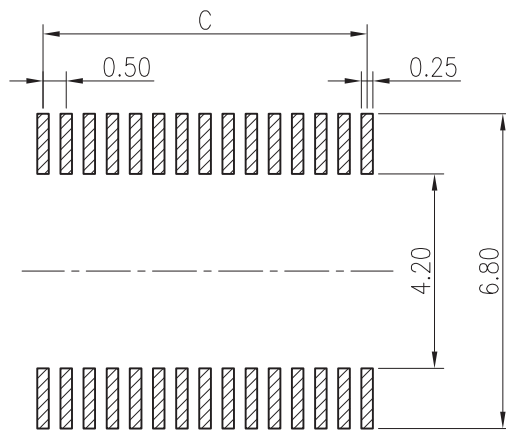
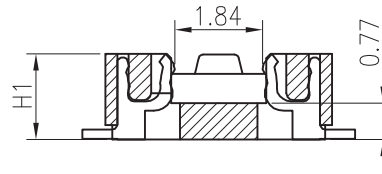
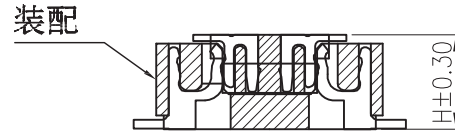
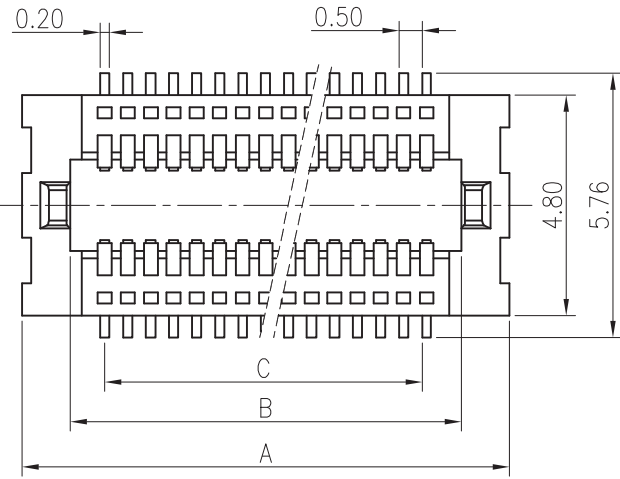
Electrical

Voltage: 50 V AC(rms)/DC
 Current: 0.5A AC(rms)/DC
 Contact Resistance: 40 mΩ max(initial)
 Dielectric Withstanding Voltage: 200 V AC/rms
 Insulation Resistance: 500 MΩ min
 Operating Temp: -40°C +105°C

MATERIAL:

HOUSING: LCP NATURE (UL94V-0)

TERMINAL: PHOSPHOR BRONZE C5191R-H



IPCB05XX1* ** * * *
 ① ② ③ ④ ⑤ ⑥
 ① Series Type ④ Serial code
 ② Type ⑤ Company code.
 ③ Pin code. ⑥ Serial code

P 数	尺 寸			P 数	尺 寸		
	A	B	C		A	B	C
10	5.60	3.50	2.00	54	16.60	14.50	13.00
12	6.10	4.00	2.50	56	17.10	15.00	13.50
14	6.60	4.50	3.00	58	17.60	15.50	14.00
16	7.10	5.00	3.50	60	18.10	16.00	14.50
18	7.60	5.50	4.00	62	18.60	16.50	15.00
20	8.10	6.00	4.50	64	19.10	17.00	15.50
22	8.60	6.50	5.00	66	19.60	17.50	16.00
24	9.10	7.00	5.50	68	20.10	18.00	16.50
26	9.60	7.50	6.00	70	20.60	18.50	17.00
28	10.10	8.00	6.50	72	21.10	19.00	17.50
30	10.60	8.50	7.00	74	21.60	19.50	18.00
32	11.10	9.00	7.50	76	22.1	20.00	18.50
34	11.60	9.50	8.00	78	22.60	20.50	19.00
36	12.10	10.00	8.50	80	23.10	21.00	19.50
38	12.60	10.50	9.00				
40	13.10	11.00	9.50				
42	13.60	11.50	10.00				
44	14.10	12.00	10.50				
46	14.60	12.50	11.00				
48	15.10	13.00	11.50				
50	15.60	13.50	12.00				
52	16.10	14.00	12.50				

HIGH	SOCKET (H1)
1.50	1.35
2.00	1.85
2.50	2.35

TOLERANCE X ±0.5 XX ±0.25 X ±0.35 XXX ±0.15 ANGLES ± 0.3°			www.i-ncp.com	
	PART NO. IPCB05XX1 xx		TITLE: 0.5mm Borad to Borad H=1.5/2.0/2.5mm Female	
	DRAWING NO. IPCB05XX1		SHEET 1 OF 1	
UNLESS OTHERWISE SPECIFIED		UNITS mm	SCALE 1:1	REV. 01

X-ON Electronics

Largest Supplier of Electrical and Electronic Components

Click to view similar products for [Board to Board & Mezzanine Connectors](#) category:

Click to view products by [INCP](#) manufacturer:

Other Similar products are found below :

[589158040000018](#) [MDF7C-18P-2.54DSA\(55\)](#) [FCN-268F036-G/BD](#) [FCN-268M012-G/0D](#) [FCN-268M024-G/1D](#) [MIS-048-01-F-D-DP-K](#)
[832-10-034-10-001000](#) [FX4C-80S-1.27DSA](#) [93696-330](#) [224393](#) [FCN-235D050-G/C](#) [210-93-314-41-105000](#) [MDF7-40DP-2.54DSA\(55\)](#)
[MIT-114-03-F-D-K](#) [55323-1519](#) [026-6203-PDB](#) [027-6203-PDB](#) [069159702701000](#) [101A10019X](#) [105061100000861+](#) [55650-0588-C](#) [75140-](#)
[7012](#) [87471-650](#) [YTW-30-07-H-Q-410-140](#) [YTT-112-01-H-Q](#) [063209](#) [10124054-515LF](#) [68685-603](#) [8-1616154-3](#) [MIS-019-01-F-D](#) [YTQ-](#)
[12103HQ](#) [541371078](#) [IL-WX-10PB-HF-B-E1000E](#) [FCN-214J100-G/0](#) [FCN-230C068-E/S](#) [354184](#) [MIT-019-04-F-D-K](#) [P50-028-DDS-TG](#)
[53309-2471](#) [54546-2071](#) [1586617-1](#) [504208-3010](#) [504208-5010](#) [504248-1010](#) [504248-1210](#) [504248-2010](#) [LST-115-07-S-D](#) [LST-105-07-G-](#)
[D](#) [9159005551906](#) [6258](#)