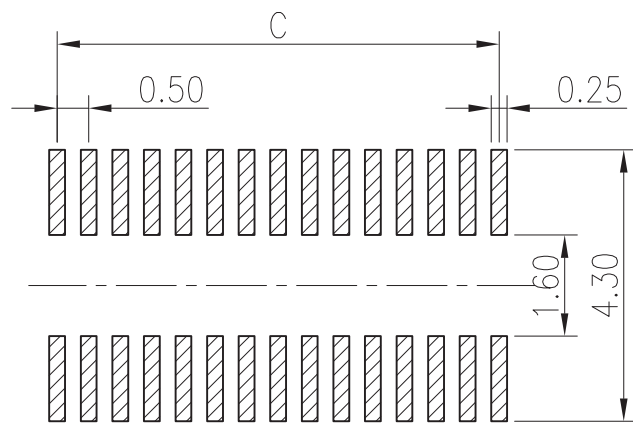
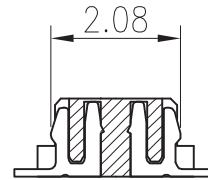
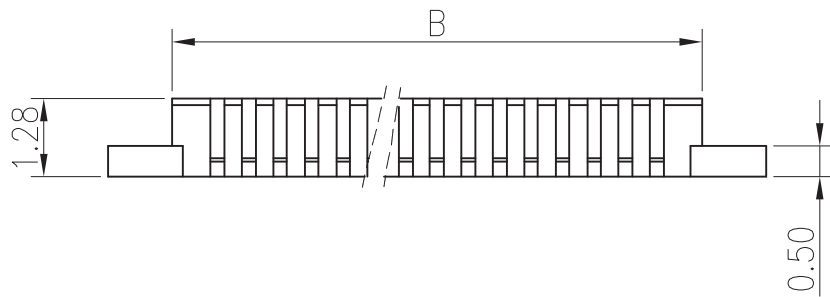
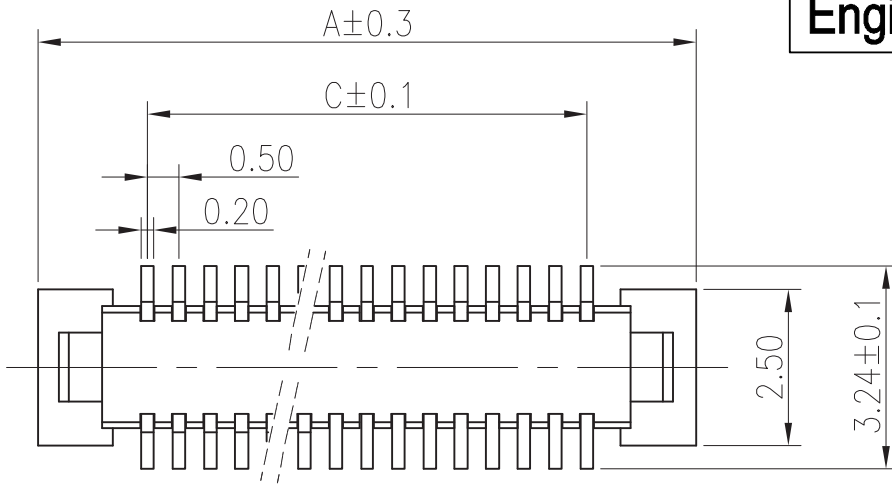


Engineer Drawing

Electrical

Voltage: 50 V AC(rms)/DC
 Current: 0.5A AC(rms)/DC
 Contact Resistance: 40 mΩ max(initial)
 Dielectric Withstanding Voltage: 200 V AC/rms
 Insulation Resistance: 500 MΩ min
 Operating Temp: -40°C +105°C



RECOMMENDED PCB PATTERN DIM.

TOLERANCE : ± 0.05

IPCB05XX1* ** * * *
 ① Series Type ② Type ③ Pin code. ④ Serial code ⑤ Company code. ⑥ Serial code

PIN	A	B	C	PIN	A	B	C
10	5.50	3.40	2.00	50	15.50	13.40	12.00
12	6.00	3.90	2.50	52	16.00	13.90	12.50
14	6.50	4.40	3.00	54	16.50	14.40	13.00
16	7.00	4.90	3.50	56	17.00	14.90	13.50
18	7.50	5.40	4.00	58	17.50	15.40	14.00
20	8.00	5.90	4.50	60	18.00	15.90	14.50
22	8.50	6.40	5.00	62	18.50	16.40	15.00
24	9.00	6.90	5.50	64	19.00	16.90	15.50
26	9.50	7.40	6.00	66	19.50	17.40	16.00
28	10.00	7.90	6.50	68	20.00	17.90	16.50
30	10.50	8.40	7.00	70	20.50	18.40	17.00
32	11.00	8.90	7.50	72	21.00	18.90	17.50
34	11.50	9.40	8.00	74	21.50	19.40	18.00
36	12.00	9.90	8.50	76	22.00	19.90	18.50
38	12.50	10.40	9.00	78	22.50	20.40	19.00
40	13.00	10.90	9.50	80	23.00	20.90	19.50
42	13.50	11.40	10.00				
44	14.00	11.90	10.50				
46	14.50	12.40	11.00				
48	15.00	12.90	11.50				

TOLERANCE

X ± 0.5 XX ± 0.25
 X ± 0.35 .XXX ± 0.15
 ANGLES $\pm 0.3^\circ$



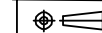
www.i-ncp.com

PART NO.
IPCB05XX1 xx

TITLE:
0.5mm Borad to Borad
H=1.5/2.0/2.5mm male

DRAWING NO.
IPCB05XX1

UNLESS OTHERWISE SPECIFIED



SHEET 1 OF 1

UNITS mm

SCALE 1:1

REV. 01

X-ON Electronics

Largest Supplier of Electrical and Electronic Components

Click to view similar products for [Board to Board & Mezzanine Connectors](#) category:

Click to view products by [INCP](#) manufacturer:

Other Similar products are found below :

[589158040000018](#) [MDF7C-18P-2.54DSA\(55\)](#) [FCN-268F036-G/BD](#) [FCN-268M012-G/0D](#) [FCN-268M024-G/1D](#) [MIS-048-01-F-D-DP-K](#)
[832-10-034-10-001000](#) [FX4C-80S-1.27DSA](#) [93696-330](#) [224393](#) [FCN-235D050-G/C](#) [210-93-314-41-105000](#) [MDF7-40DP-2.54DSA\(55\)](#)
[MIT-114-03-F-D-K](#) [55323-1519](#) [026-6203-PDB](#) [027-6203-PDB](#) [069159702701000](#) [101A10019X](#) [105061100000861+](#) [55650-0588-C](#) [75140-](#)
[7012](#) [87471-650](#) [YTW-30-07-H-Q-410-140](#) [YTT-112-01-H-Q](#) [063209](#) [10124054-515LF](#) [68685-603](#) [8-1616154-3](#) [MIS-019-01-F-D](#) [YTQ-](#)
[12103HQ](#) [541371078](#) [IL-WX-10PB-HF-B-E1000E](#) [FCN-214J100-G/0](#) [FCN-230C068-E/S](#) [354184](#) [MIT-019-04-F-D-K](#) [P50-028-DDS-TG](#)
[53309-2471](#) [54546-2071](#) [1586617-1](#) [504208-3010](#) [504208-5010](#) [504248-1010](#) [504248-1210](#) [504248-2010](#) [LST-115-07-S-D](#) [LST-105-07-G-](#)
[D](#) [9159005551906](#) [6258](#)