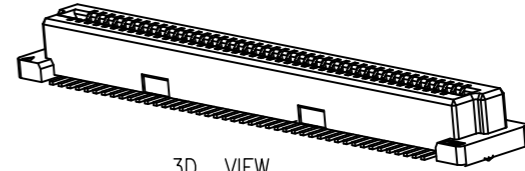


Engineer Drawing

NOTES:

- 1.HUOSING: LCP HIGH-TEMP THERMOPLASTIC UL94V-0 COLOR:BEIGE
- 2.TERMINAL:PHOSPHOR BRONZE

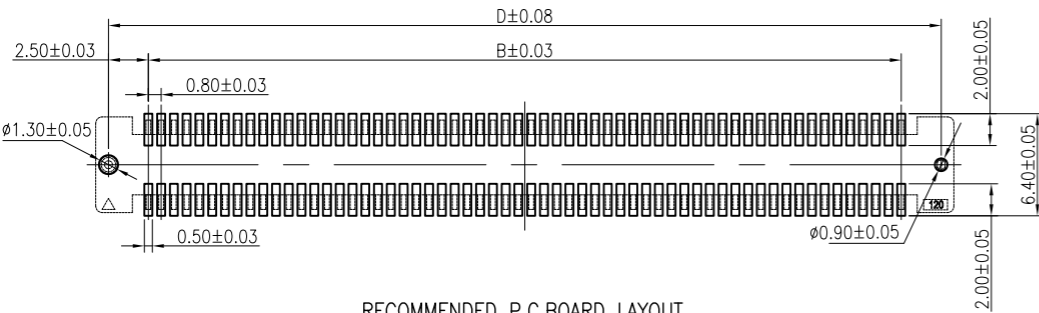
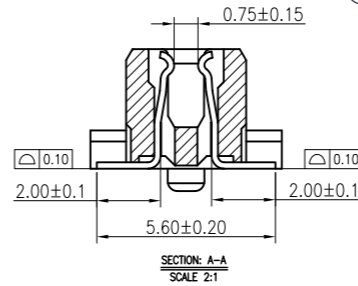
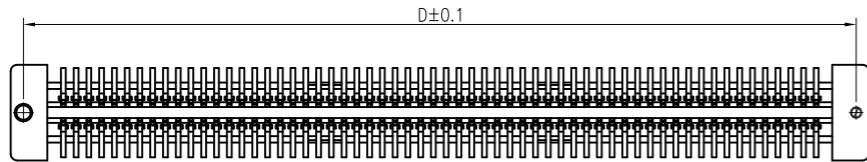
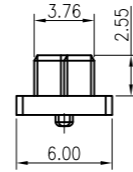
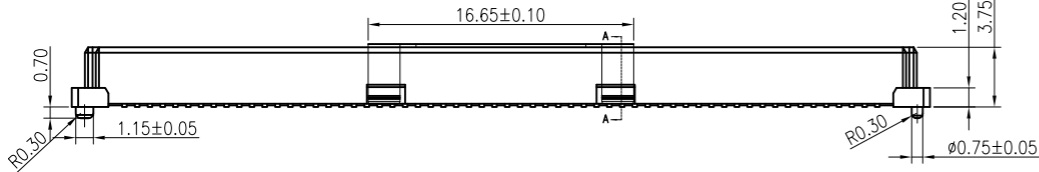
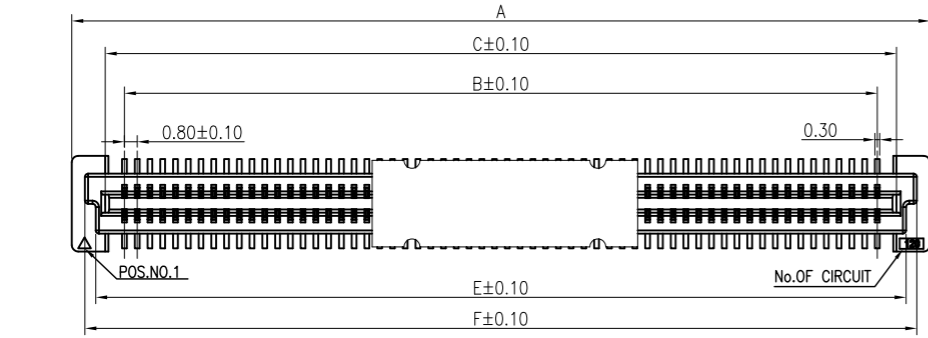


3D VIEW

IPC8 08 371 F XX X X X

① ② ③ ④ ⑤ ⑥ ⑦ ⑧

- ① Series Type
- ⑤ Pin Code: See Table 1
- ② Pitch: 0.8mm
- ⑥ Rows Code
- ③ Height
- ⑦ Serial Code
- ④ Connector Type
- ⑧ Other Code



RECOMMENDED P.C.BOARD LAYOUT

Table 1

Pin Code	NO.of contacts	Dimensions					
		A	B	C	D	E	F
40	40	21.80	15.20	17.60	20.20	18.80	20.15
50	50	25.80	19.20	21.60	24.20	22.80	24.15
60	60	29.80	23.20	25.60	28.20	26.80	28.15
80	80	37.80	31.20	33.60	36.20	34.80	36.15
A0	100	45.80	39.20	41.60	44.20	42.80	44.15
C0	120	53.80	47.20	49.60	52.20	50.80	52.15
E0	140	61.80	55.20	57.60	60.20	58.80	60.15
G0	160	69.80	63.20	65.60	68.20	66.80	68.15
I0	180	77.80	71.20	73.60	76.20	74.80	76.15
K0	200	85.80	79.20	81.60	84.20	82.80	84.15

TOLERANCES:
 X = ±0.25
 X.X = ±0.20
 X.XX = ±0.10
 GENERAL ANGLE
 X° = ±1°



www.i-ncp.com

PART NO:
IPC808371F xx S7V

DRAWING NO
IPC808371F07V

NAME:
0.8PH H3.7 BTB Female
Receptacle Assembly H5.0

☞ SHEET 1 OF 1

UNITS:mm SCALE:1:1 REV.02

X-ON Electronics

Largest Supplier of Electrical and Electronic Components

Click to view similar products for [Board to Board & Mezzanine Connectors](#) category:

Click to view products by [INCP](#) manufacturer:

Other Similar products are found below :

[589158040000018](#) [MDF7C-18P-2.54DSA\(55\)](#) [FCN-268F036-G/BD](#) [FCN-268M012-G/0D](#) [FCN-268M024-G/1D](#) [MIS-048-01-F-D-DP-K](#)
[832-10-034-10-001000](#) [FX4C-80S-1.27DSA](#) [93696-330](#) [224393](#) [FCN-235D050-G/C](#) [210-93-314-41-105000](#) [MDF7-40DP-2.54DSA\(55\)](#)
[55323-1519](#) [069159702701000](#) [101A10019X](#) [105061100000861+](#) [75140-7012](#) [87471-650](#) [1744382-4](#) [063209](#) [10124054-515LF](#) [68685-603](#)
[8-1616154-3](#) [541371078](#) [IL-WX-10PB-HF-B-E1000E](#) [FX23-40P-0.5SV15B](#) [FCN-214J100-G/0](#) [354184](#) [P50-028-DDS-TG](#) [53309-2471](#)
[54546-2071](#) [1586617-1](#) [504248-1210](#) [504248-2010](#) [1-1437355-2](#) [9159005551906](#) [NDS100-004-BF](#) [93696-730LF](#) [91922-31141LF](#) [505274-](#)
[3440](#) [501493-2410](#) [504208-3410](#) [505006-0811](#) [505274-2040](#) [202436-1600](#) [202477-0414](#) [71660-7580](#) [73420-5192](#) [360-10-107-00-001000](#)