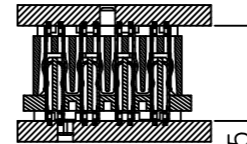
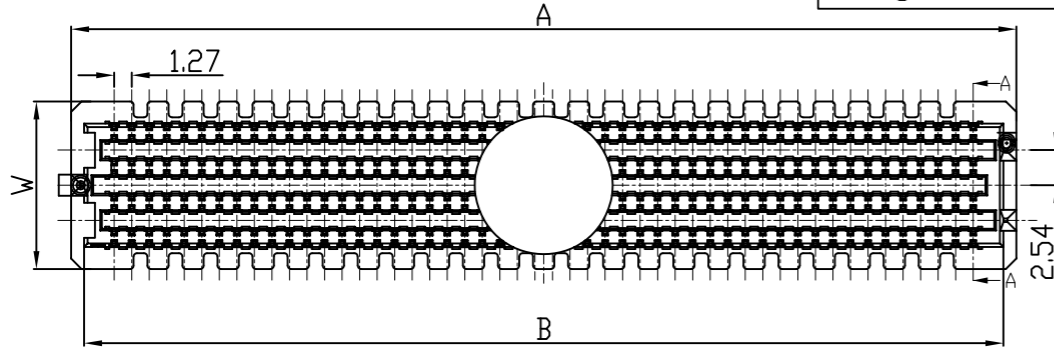
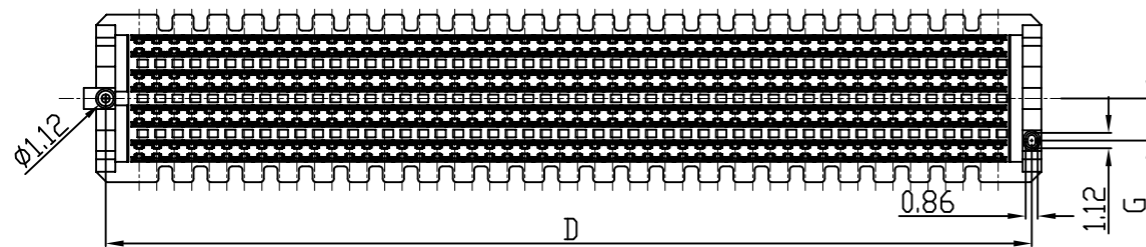
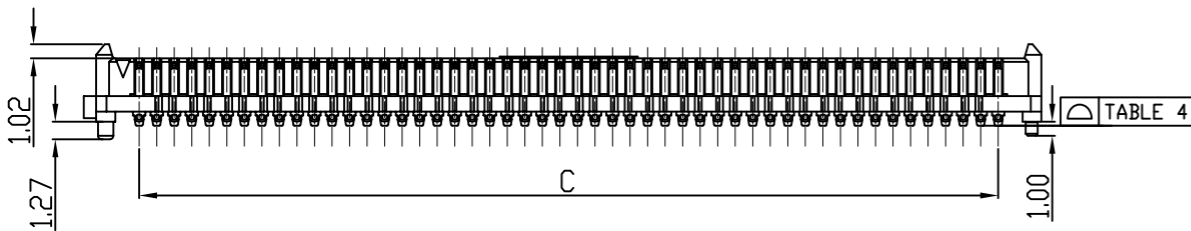
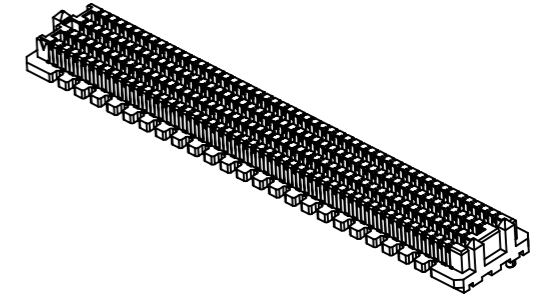


Engineer Drawing



SPECIFICATIONS
 1.CURRENT RATING: 1.0A
 2.VOLTAGE RATING 240VAC
 3.OPERATING TEMPERATURE RANGE:-55°C TO +125°C
 4.OPERATING HUMIDITY RANGE:90% TO 95%.
 5.WITHSTANDING VOLTAGE:700V AC/MINUTE.



IPCB 1A 20 1 M XX X X

① ② ③ ④ ⑤ ⑥ ⑦ ⑧ ⑨

- ① Series Type
- ② Pitch: 1.27mm
- ③ Height
- ④ Internal Code
- ⑤ Connector Type
- ⑥ Pin Code: See Table 6 (No. of Contacts: ≥ 100)
- ⑦ Rows Code
- ⑧ Serial Code
- ⑨ Other Code

| ROWS | W | G |
|--------|-------|------|
| 4 | 7.06 | 2.01 |
| 5 OR 6 | 9.60 | 3.05 |
| 8 | 12.14 | 3.05 |
| 10 | 14.68 | 3.05 |
| 12 | 17.22 | 3.05 |
| 14 | 19.76 | 3.05 |

| POSITION | COPLANARITY |
|----------|-------------|
| 10 PIN | 0.15 |
| 30 PIN | 0.20 |
| 40 PIN | 0.23 |
| 50 PIN | 0.23 |

| | 5.0 | 6.0 | 6.5 | 7.5 |
|-----|------|------|-------|-------|
| 2.0 | 7.00 | 8.00 | 8.50 | 9.50 |
| 3.0 | 8.00 | 9.00 | 9.50 | 10.50 |
| 3.5 | 8.50 | 9.50 | 10.00 | 11.00 |
| 5.5 | NA | NA | 12.00 | NA |

| No OF ROWS | A | B | C | D |
|------------|-------|-------|-------|-------|
| 10 | 17.68 | 15.80 | 11.43 | 16.28 |
| 15 | 24.03 | 22.15 | 17.78 | 22.63 |
| 19 | 29.11 | 27.23 | 22.86 | 27.71 |
| 20 | 30.38 | 28.50 | 24.13 | 28.98 |
| 25 | 36.73 | 34.85 | 30.13 | 35.33 |
| 30 | 43.08 | 41.20 | 36.83 | 41.68 |
| 40 | 55.78 | 53.90 | 49.53 | 54.38 |
| 50 | 68.48 | 66.60 | 62.23 | 67.08 |

| Pin Code | No. of Contacts | Pin Code | No. of Contacts | Pin Code | No. of Contacts |
|----------|-----------------|----------|-----------------|----------|-----------------|
| A0 | 100 | H0 | 170 | P0 | 240 |
| B0 | 110 | I0 | 180 | Q0 | 250 |
| C0 | 120 | J0 | 190 | R0 | 260 |
| D0 | 130 | K0 | 200 | S0 | 270 |
| E0 | 140 | L0 | 210 | T0 | 280 |
| F0 | 150 | N0 | 220 | U0 | 290 |
| G0 | 160 | M0 | 230 | V0 | 300 |

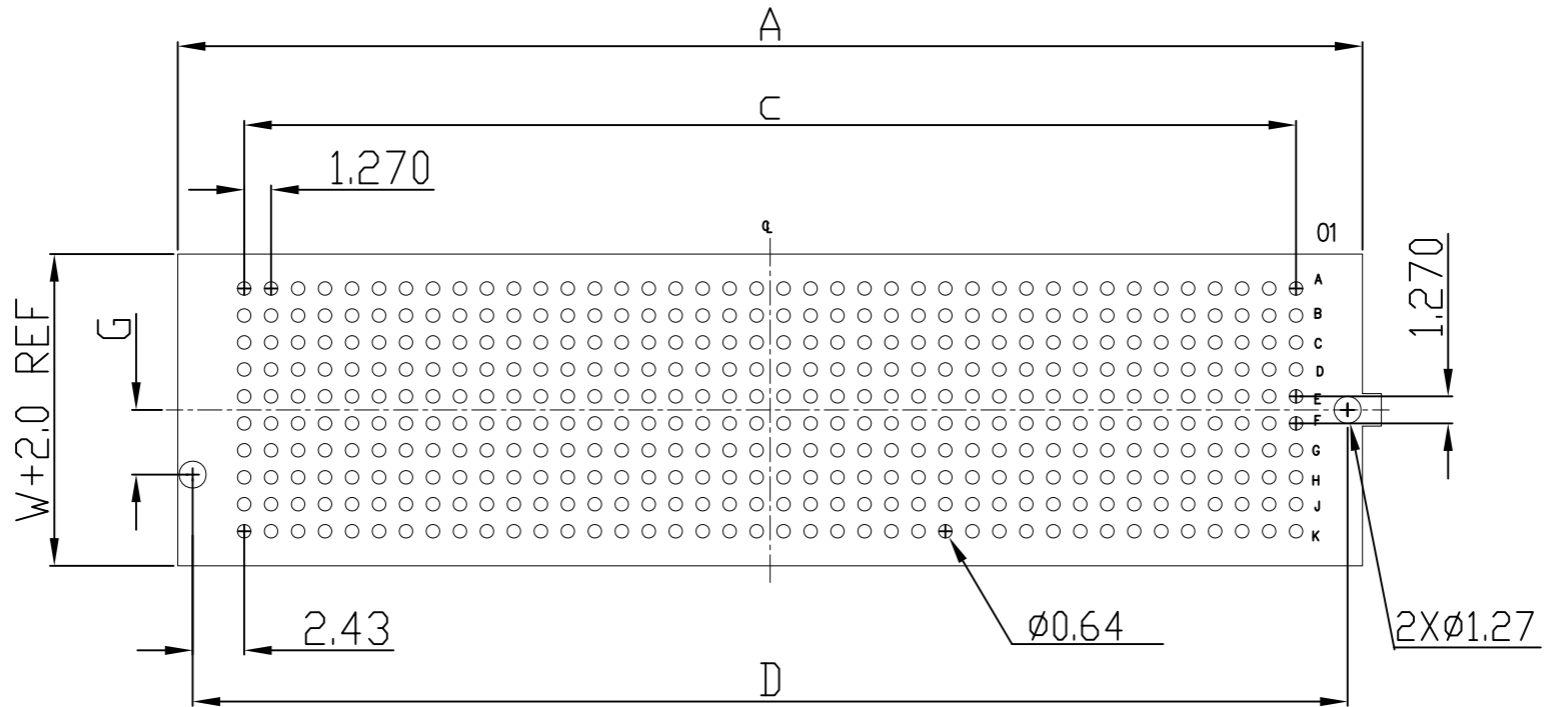
| HEIGHT | H1 |
|--------|------|
| 2.0 | 5.61 |
| 3.0 | 6.60 |
| 3.5 | 7.11 |
| 5.5 | 9.12 |



TOLERANCES:
 X = ±0.35
 X.X = ±0.25
 X.XX = ±0.10
GENERAL ANGLE
 X° = ±1°

| | | | |
|---|--|--|--|
| | | www.i-ncp.com | |
| PART NO: IPC <u>B</u> 1 <u>A</u> 2 <u>0</u> 1 <u>M</u> <u>xx</u> 7 <u>V</u> | | NAME: 1.27PH H2.0 BTB MALE | |
| DRAWING NO IPC <u>B</u> 1 <u>A</u> 2 <u>0</u> 1 <u>M</u> 0 <u>7</u> <u>V</u> | | | |
| SHEET 1 OF 2 | | UNITS:mm SCALE:1:1 REV.02 | |

Engineer Drawing



Recommended PC board pattern
(TOP VIEW)

| | | |
|--|--|--|
| <p>TOLERANCES: X.=±0.35 X.X=±0.25 X.XX=±0.10 GENERAL ANGLE X°=±1°</p> | iNCP | www.i-ncp.com |
| | PART NO: IPCB1A201M xx 7V | NAME: 1.27PH H2.0 BTB MALE |
| | DRAWING NO IPCB1A201M07V | |
| | SHEET 2 OF 2 | UNITS:mm SCALE:1:1 REV.02 |

X-ON Electronics

Largest Supplier of Electrical and Electronic Components

Click to view similar products for [Board to Board & Mezzanine Connectors](#) category:

Click to view products by [INCP](#) manufacturer:

Other Similar products are found below :

[589158040000018](#) [MDF7C-18P-2.54DSA\(55\)](#) [FCN-268F036-G/BD](#) [FCN-268M012-G/0D](#) [FCN-268M024-G/1D](#) [MIS-048-01-F-D-DP-K](#)
[832-10-034-10-001000](#) [FX4C-80S-1.27DSA](#) [93696-330](#) [224393](#) [FCN-235D050-G/C](#) [210-93-314-41-105000](#) [MDF7-40DP-2.54DSA\(55\)](#)
[55323-1519](#) [069159702701000](#) [101A10019X](#) [105061100000861+](#) [75140-7012](#) [87471-650](#) [1744382-4](#) [063209](#) [10124054-515LF](#) [68685-603](#)
[8-1616154-3](#) [541371078](#) [IL-WX-10PB-HF-B-E1000E](#) [FX23-40P-0.5SV15B](#) [FCN-214J100-G/0](#) [354184](#) [P50-028-DDS-TG](#) [53309-2471](#)
[54546-2071](#) [1586617-1](#) [504248-1210](#) [504248-2010](#) [1-1437355-2](#) [9159005551906](#) [NDS100-004-BF](#) [93696-730LF](#) [91922-31141LF](#) [505274-](#)
[3440](#) [501493-2410](#) [504208-3410](#) [505006-0811](#) [505274-2040](#) [202436-1600](#) [202477-0414](#) [71660-7580](#) [73420-5192](#) [360-10-107-00-001000](#)