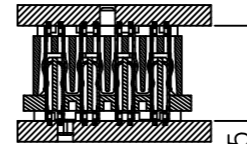
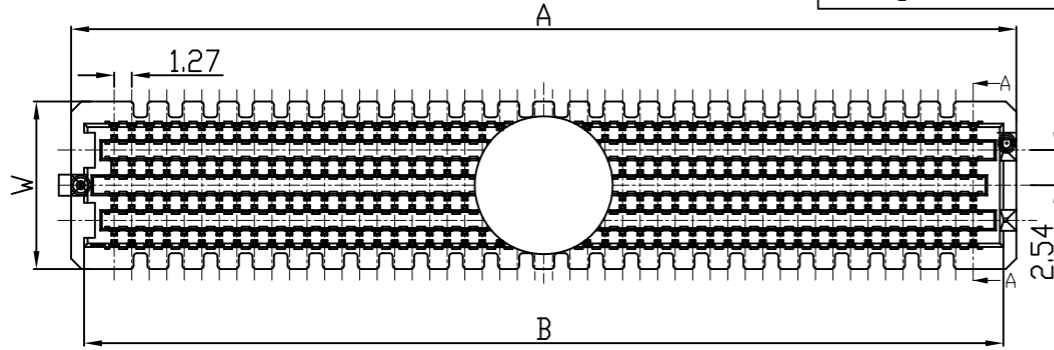
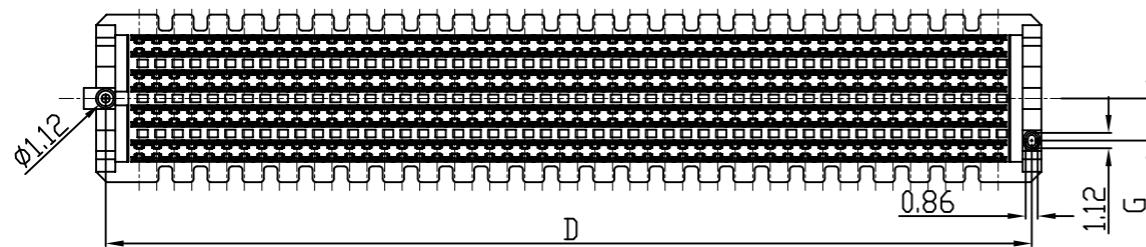
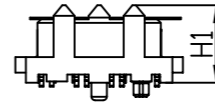
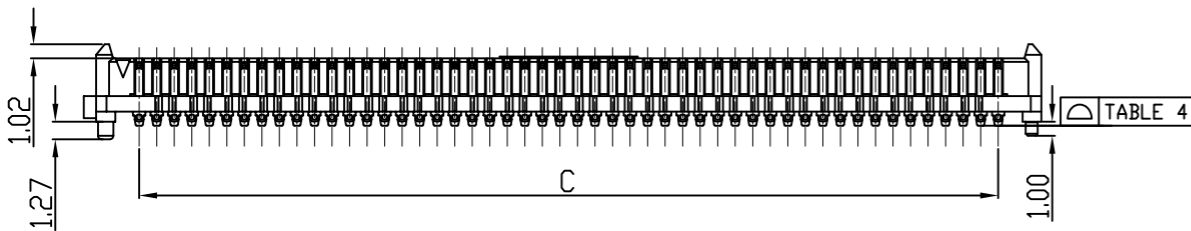
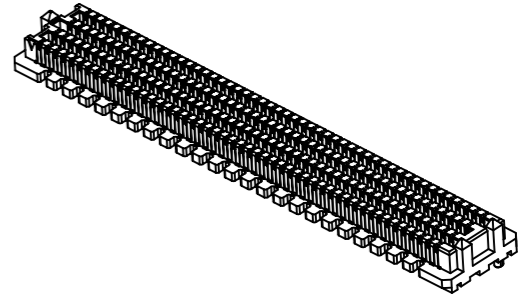


Engineer Drawing



- SPECIFICATIONS**
- CURRENT RATING: 1.0A
 - VOLTAGE RATING 240VAC
 - OPERATING TEMPERATURE RANGE:-55°C TO +125°C
 - OPERATING HUMIDITY RANGE:90% TO 95%.
 - WITHSTANDING VOLTAGE:700V AC/MINUTE.



IPCB 1A 20 1 M XX X X

① ② ③ ④ ⑤ ⑥ ⑦ ⑧ ⑨

- ① Series Type
- ② Pitch: 1.27mm
- ③ Height
- ④ Internal Code
- ⑤ Connector Type
- ⑥ Pin Code: See Table 6 (No. of Contacts: ≥ 100)
- ⑦ Rows Code
- ⑧ Serial Code
- ⑨ Other Code

ROWS	W	G
4	7.06	2.01
5 OR 6	9.60	3.05
8	12.14	3.05
10	14.68	3.05
12	17.22	3.05
14	19.76	3.05

POSITION	COPLANARITY
10 PIN	0.15
30 PIN	0.20
40 PIN	0.23
50 PIN	0.23

	5.0	6.0	6.5	7.5
2.0	7.00	8.00	8.50	9.50
3.0	8.00	9.00	9.50	10.50
3.5	8.50	9.50	10.00	11.00
5.5	NA	NA	12.00	NA

No OF ROWS	A	B	C	D
10	17.68	15.80	11.43	16.28
15	24.03	22.15	17.78	22.63
19	29.11	27.23	22.86	27.71
20	30.38	28.50	24.13	28.98
25	36.73	34.85	30.13	35.33
30	43.08	41.20	36.83	41.68
40	55.78	53.90	49.53	54.38
50	68.48	66.60	62.23	67.08

Pin Code	No. of Contacts	Pin Code	No. of Contacts	Pin Code	No. of Contacts
A0	100	H0	170	P0	240
B0	110	I0	180	Q0	250
C0	120	J0	190	R0	260
D0	130	K0	200	S0	270
E0	140	L0	210	T0	280
F0	150	N0	220	U0	290
G0	160	M0	230	V0	300

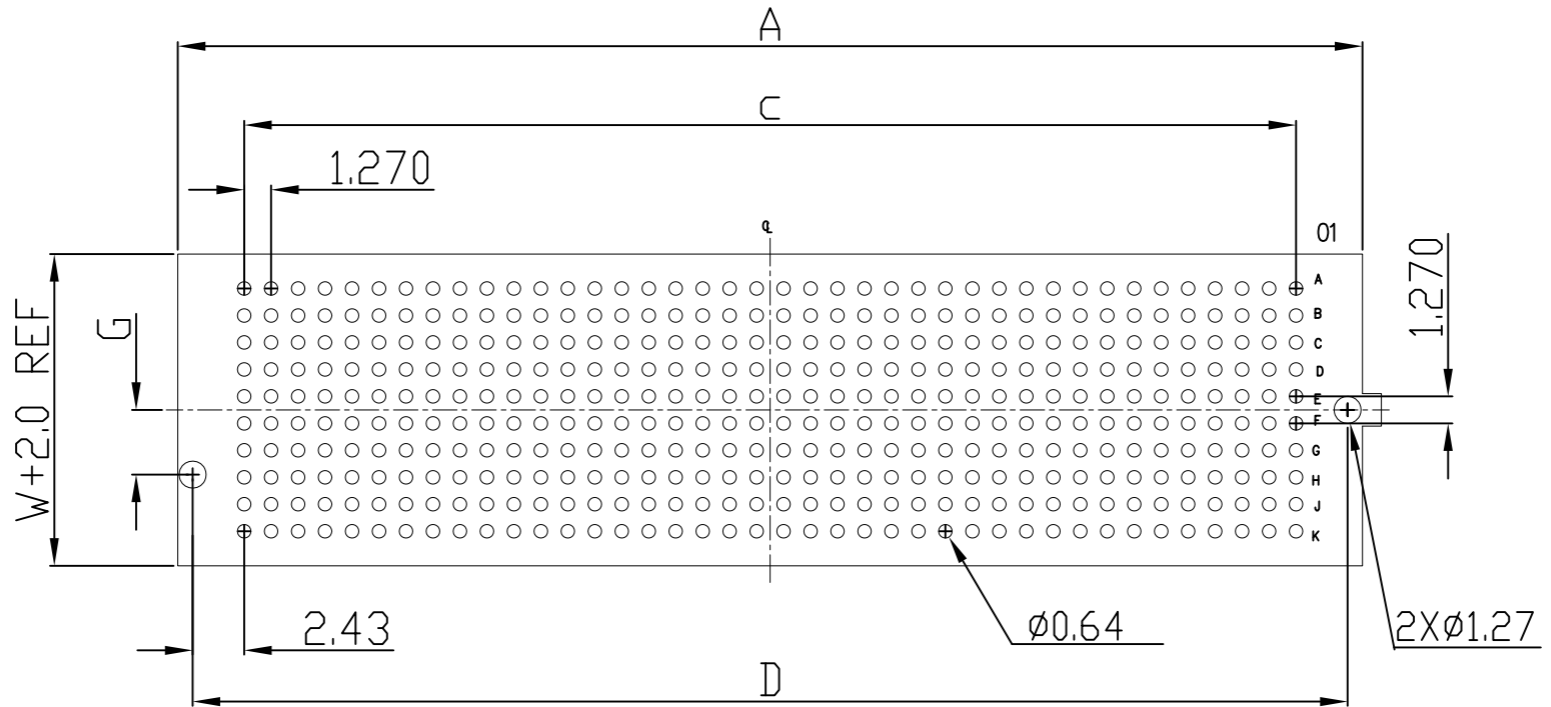
HEIGHT	H1
2.0	5.61
3.0	6.60
3.5	7.11
5.5	9.12



TOLERANCES:
 X = ±0.35
 X.X = ±0.25
 X.XX = ±0.10
GENERAL ANGLE
 X° = ±1°

		www.i-ncp.com	
PART NO: IPC <u>B</u> 1 <u>A</u> 2 <u>0</u> 1 <u>M</u> <u>xx</u> <u>7</u> <u>V</u>		NAME: 1.27PH H2.0 BTB MALE	
DRAWING NO IPC <u>B</u> 1 <u>A</u> 2 <u>0</u> 1 <u>M</u> 0 <u>7</u> <u>V</u>			
SHEET 1 OF 2		UNITS:mm SCALE:1:1 REV.02	

Engineer Drawing



Recommended PC board pattern
(TOP VIEW)

<p>TOLERANCES: X.=±0.35 X.X=±0.25 X.XX=±0.10 GENERAL ANGLE X°=±1°</p>		www.i-ncp.com
	PART NO: IPCB1A201M xx 7V	NAME: 1.27PH H2.0 BTB MALE
	DRAWING NO IPCB1A201M07V	
	SHEET 2 OF 2	UNITS:mm SCALE:1:1 REV.02

X-ON Electronics

Largest Supplier of Electrical and Electronic Components

Click to view similar products for [Board to Board & Mezzanine Connectors](#) category:

Click to view products by [INCP](#) manufacturer:

Other Similar products are found below :

[589158040000018](#) [MDF7C-18P-2.54DSA\(55\)](#) [FCN-268F036-G/BD](#) [FCN-268M012-G/0D](#) [FCN-268M024-G/1D](#) [MIS-048-01-F-D-DP-K](#)
[832-10-034-10-001000](#) [FX4C-80S-1.27DSA](#) [93696-330](#) [224393](#) [FCN-235D050-G/C](#) [210-93-314-41-105000](#) [MDF7-40DP-2.54DSA\(55\)](#)
[55323-1519](#) [069159702701000](#) [101A10019X](#) [105061100000861+](#) [75140-7012](#) [87471-650](#) [1744382-4](#) [063209](#) [10124054-515LF](#) [68685-603](#)
[8-1616154-3](#) [541371078](#) [IL-WX-10PB-HF-B-E1000E](#) [FX23-40P-0.5SV15B](#) [FCN-214J100-G/0](#) [354184](#) [P50-028-DDS-TG](#) [53309-2471](#)
[54546-2071](#) [1586617-1](#) [504248-1210](#) [504248-2010](#) [1-1437355-2](#) [9159005551906](#) [NDS100-004-BF](#) [93696-730LF](#) [91922-31141LF](#) [505274-](#)
[3440](#) [501493-2410](#) [504208-3410](#) [505006-0811](#) [505274-2040](#) [202436-1600](#) [202477-0414](#) [71660-7580](#) [73420-5192](#) [360-10-107-00-001000](#)