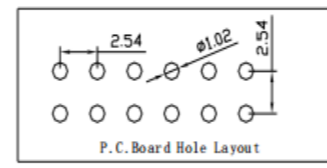
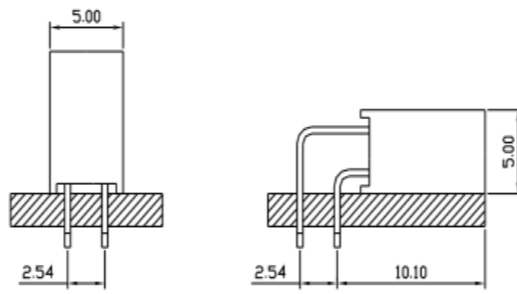
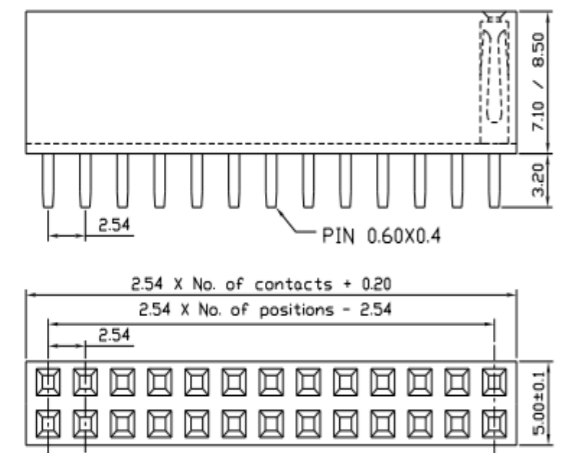
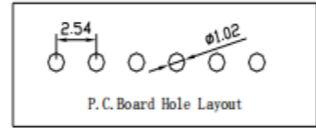
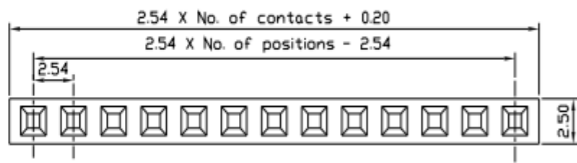
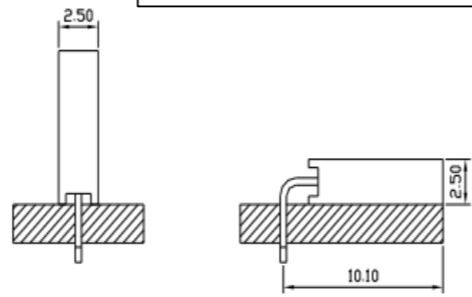
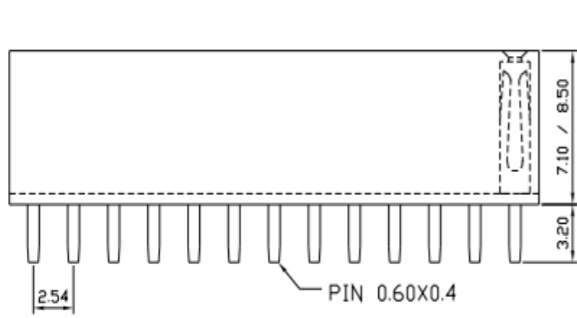
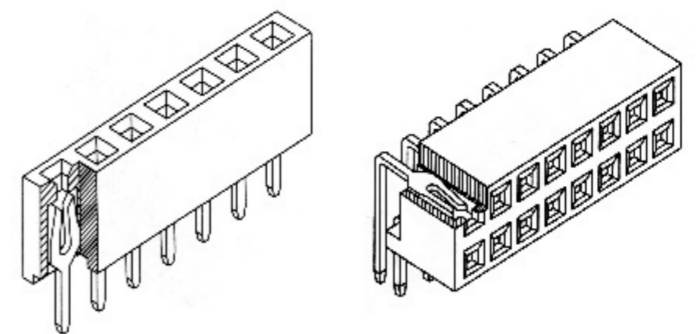


Engineer Drawing



SPECIFICATIONS:
 Current Rating: 3.0 AMP
 Contact Resistance: 30m Ω Max
 Insulation Resistance: 1000M Ω Min
 Withstand Voltage: 600VAC/minute
 Operation Temperature: -40°C to +105°C

MATERIALS:
 Contact Material: Copper Alloy
 Contact Plating: Gold or Tin over 50 μ Ni
 Insulator: Glass Filled Polyester(UL94V-0)
 Standard: PBT



IPCP 256 * * * * *
 ① ② ③ ④ ⑤ ⑥ ⑦ ⑧

- ① Series Type
- ② Pitch
- ③ Connector Code
- ④ Pin Code
- ⑤ Internal Code
- ⑥ Appereace Code
- ⑦ Serial Code
- ⑧ Other Code

		www.i-ncp.com	
PART NO IPCP256Fxx		NAME: HEADER FEMALE 2PIN 180° 90°	
DRAWING NO IPCP256F 07			
	SHEET 1 OF 1	UNITS:mm	SCALE:1:1
			REV.01

X-ON Electronics

Largest Supplier of Electrical and Electronic Components

Click to view similar products for [Headers & Wire Housings](#) category:

Click to view products by [INCP](#) manufacturer:

Other Similar products are found below :

[0015917161](#) [0022155065](#) [57102-F02-18ULF](#) [58102-G61-06LF](#) [582553-1](#) [01.001.5753.1](#) [0050291907](#) [02.125.8002.8](#) [609-3404](#) [61062-3](#)
[CSU011177004](#) [622-0430](#) [622-3653LF](#) [63453-116](#) [636-1030](#) [636-1427](#) [636-3427](#) [636-4007](#) [641938-9](#) [65495-038](#) [65692-001LF](#) [65781-018](#)
[65781-047](#) [65817-010LF](#) [65817-015LF](#) [67095-007LF](#) [67601157](#) [68631-112](#) [68645-018](#) [699319-000](#) [70.362.1628.0](#) [70-4210](#) [70-4226B](#) [70-](#)
[4853B](#) [71.350.2428.0](#) [733-134](#) [733-162](#) [760-3052](#) [MHR-64-VUAL](#) [80.063.4001.1](#) [800-90-001-10-001000](#) [801-43-002-10-013000](#)
[801-43-006-10-002000](#) [803-43-024-10-001000](#) [803-93-012-10-001000](#) [8-1437020-4](#) [819-22-004-30-001101](#) [820-22-006-30-001101](#)
[820-22-008-30-001101](#) [821-22-002-10-001101](#)