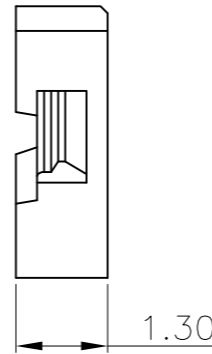
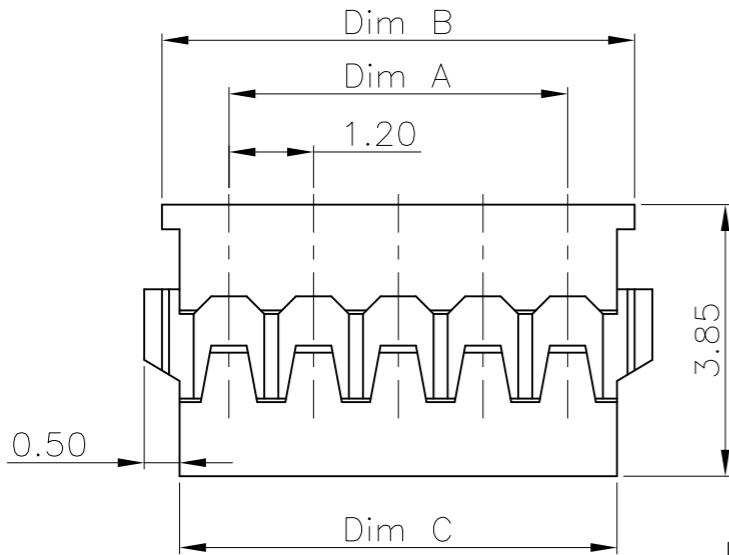


3D VIEW



NOTE:

- 1.MATERIAL SPECIFICATION:  
1-1.HOUSING: LCP,UL94V-0
- 2.MECHANICAL PERFORMANCE:  
2-1.RETENTIVITY FORCE: 0.05KGF/pin min  
2-2.DURABILITY: 10 CYCLES.
- 3.ELECTRICAL PERFORMANCE:  
3-1.CURRENT RATING: 1.5A AC/DC  
RATED VOLTAGE : 50V AC/DC  
3-2.CONTACT RESISTANCE: 20 mΩ MAX  
3-3.INSULATION RESISTANCE: 100MΩ Min  
3-4.DIELECTRIC WITHSTANDING : 500V
- 4.ENVIRONMENTAL PERFORMANCE:  
4-1.OPERATING TEMPERATURE: -25°C~+85°C.
- 5.PACKAGE SPEC: PE BAG

**IPCW 120 H XX X XX X**

① ② ③ ④ ⑤ ⑥ ⑦ ⑧

- ①Series Type
- ②Pitch
- ③H:Housing
- ④Pin Code
- ⑤Material Code
- ⑥Appereace Code
- ⑦Internal Code
- ⑧Company Code

Part No.	Dimensions (mm)		
	A	B	C
02P	1.20	3.10	2.60
03P	2.40	4.30	3.80
04P	3.60	5.50	5.00
05P	4.80	6.70	6.20
06P	6.00	7.90	7.40
07P	7.20	9.10	8.60
09P	9.60	11.50	11.00
10P	10.80	12.70	12.20

TOLERANCES:  
 0.0=±0.35  
 0.00=±0.25  
 0.000=±0.10  
 GENERAL ANGLE  
 X°REF=±6°  
 X°=±3°  
 X.X°=±2°

		<a href="http://www.i-ncp.com">www.i-ncp.com</a>
PART NO: IPCW120H xx 060		NAME: Pitch 1.20mm MX 180° Single row Housing
DRAWING NO IPCW120H06		
SHEET 1 OF 1		UNITS:mm SCALE:1:1 REV:01

## X-ON Electronics

Largest Supplier of Electrical and Electronic Components

*Click to view similar products for [Headers & Wire Housings](#) category:*

*Click to view products by [INCP](#) manufacturer:*

Other Similar products are found below :

[0015917161](#) [0022155065](#) [57102-F02-18ULF](#) [58102-G61-06LF](#) [582553-1](#) [01.001.5753.1](#) [0050291907](#) [02.125.8002.8](#) [609-3404](#) [61062-3](#)  
[CSU011177004](#) [622-0430](#) [622-3653LF](#) [63453-116](#) [636-1030](#) [636-1427](#) [636-3427](#) [636-4007](#) [641938-9](#) [65495-038](#) [65692-001LF](#) [65781-018](#)  
[65781-047](#) [65817-010LF](#) [65817-015LF](#) [67095-007LF](#) [67601157](#) [68631-112](#) [68645-018](#) [699319-000](#) [70.362.1628.0](#) [70-4210](#) [70-4226B](#) [70-](#)  
[4853B](#) [71.350.2428.0](#) [733-134](#) [733-162](#) [760-3052](#) [MHR-64-VUAL](#) [80.063.4001.1](#) [800-90-001-10-001000](#) [801-43-002-10-013000](#)  
[801-43-006-10-002000](#) [803-43-024-10-001000](#) [803-93-012-10-001000](#) [8-1437020-4](#) [819-22-004-30-001101](#) [820-22-006-30-001101](#)  
[820-22-008-30-001101](#) [821-22-002-10-001101](#)