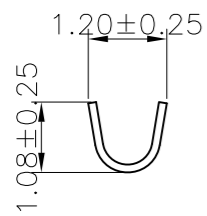


NOTE:  
 1.MATERIAL SPECIFICATION:  
 1-1.CONTACTS: PHOSPHOR BRONZE  
 2.PLATING SPECIFICATION:  
 2-1.CONTACTS:  
 TIN/GOLD FLASH PLATED OVER ALL.  
 3.MECHANICAL PERFORMANCE:  
 3-1.RETENTIVITY FORCE: 0.05KGF/pin min  
 3-2.DURABILITY: 10 CYCLES.  
 4.ELECTRICAL PERFORMANCE:  
 4-1.CURRENT RATING: 1.5A AC/DC  
 RATED VOLTAGE : 50V AC/DC  
 4-2.CONTACT RESISTANCE: 20 mΩ MAX  
 4-3.INSULATION RESISTANCE: 100MΩ Min  
 4-4.DIELECTRIC WITHSTANDING : 500V  
 5.ENVIRONMENTAL PERFORMANCE:  
 5-1.OPERATING TEMPERATURE: -25°C~+85°C.  
 6.PACKAGE SPEC : REEL

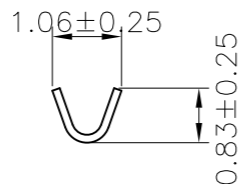
**IPCW 120 T F X X X X X X**

① ② ③ ④ ⑤ ⑥ ⑦ ⑧ ⑨ ⑩

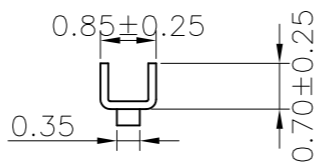
- ① Series Type
- ② Pitch
- ③ Terminal
- ④ Female
- ⑤ Serial Code
- ⑥ Material Code
- ⑦ Other Code
- ⑧ Packing
- ⑨ Internal Code
- ⑩ Plating



A-A



B-B



C-C

TOLERANCES:  
 0.0±0.35  
 0.00±0.25  
 0.000±0.10  
 GENERAL ANGLE  
 X°REF=±6°  
 X°=±3°  
 X.X°=±2°

	<a href="http://www.i-ncp.com">www.i-ncp.com</a>
PART NO: IPCW120TF xx06	NAME: Pitch 1.20mm MX Terminal Female AWG#28~#30
DRAWING NO IPCW120TF06	
SHEET 1 OF 1	UNITS:mm SCALE:1:1 REV:01

## X-ON Electronics

Largest Supplier of Electrical and Electronic Components

*Click to view similar products for [Headers & Wire Housings](#) category:*

*Click to view products by [INCP](#) manufacturer:*

Other Similar products are found below :

[0015917161](#) [0022155065](#) [57102-F02-18ULF](#) [58102-G61-06LF](#) [582553-1](#) [01.001.5753.1](#) [0050291907](#) [02.125.8002.8](#) [609-3404](#) [61062-3](#)  
[CSU011177004](#) [622-0430](#) [622-3653LF](#) [63453-116](#) [636-1030](#) [636-1427](#) [636-3427](#) [636-4007](#) [641938-9](#) [65495-038](#) [65692-001LF](#) [65781-018](#)  
[65781-047](#) [65817-010LF](#) [65817-015LF](#) [67095-007LF](#) [67601157](#) [68631-112](#) [68645-018](#) [699319-000](#) [70.362.1628.0](#) [70-4210](#) [70-4226B](#) [70-](#)  
[4853B](#) [71.350.2428.0](#) [733-134](#) [733-162](#) [MHR-64-VUAL](#) [80.063.4001.1](#) [800-90-001-10-001000](#) [801-43-002-10-013000](#) [801-43-006-10-](#)  
[002000](#) [803-43-024-10-001000](#) [803-93-012-10-001000](#) [8-1437020-4](#) [819-22-004-30-001101](#) [820-22-006-30-001101](#) [820-22-008-30-001101](#)  
[821-22-002-10-001101](#) [821-22-003-10-002101](#)