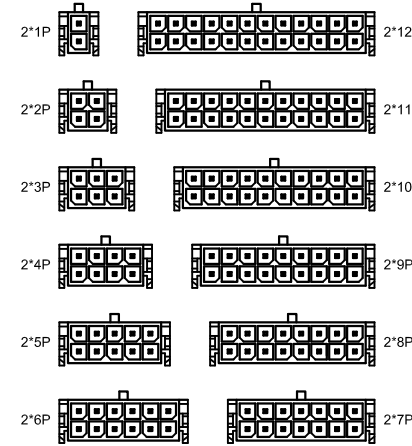
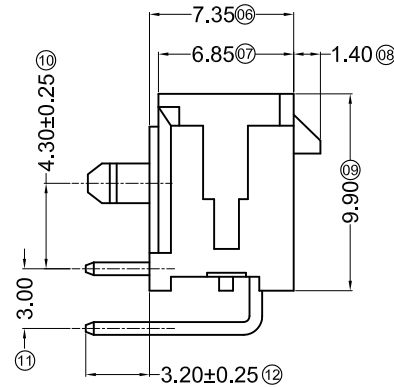
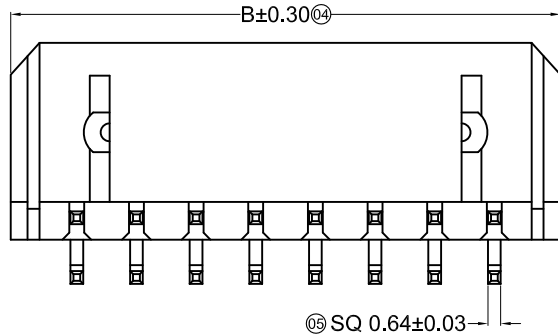
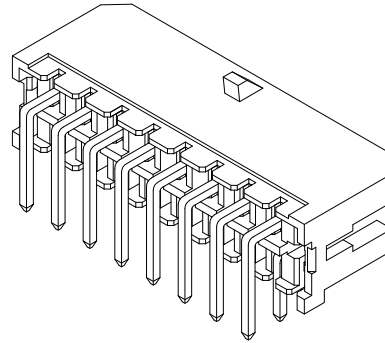
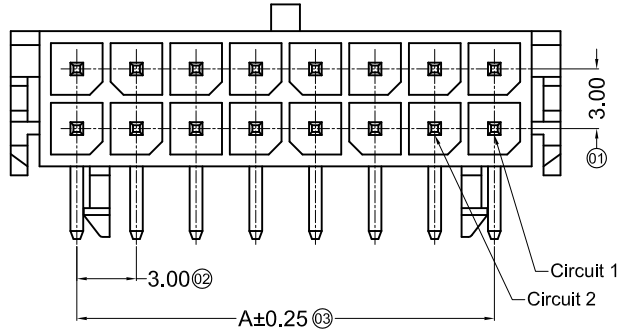


# Engineer Drawing

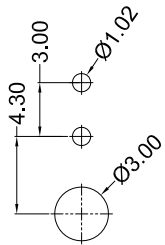
## Specifications :

- Voltage rating: 250V AC / DC
- Current rating: 5A AC / DC
- Withstanding voltage: 1000V AC/minute
- Temperature range: -25°C~+85°C
- Insulation resistance: ≥1000MΩ
- Contact resistance: ≤10mΩ
- After environmental testing: ≤20mΩ
- Plating category: G-Contact Gold Flash  
S-Bright plating
- Material: PT-PBT 94V-0

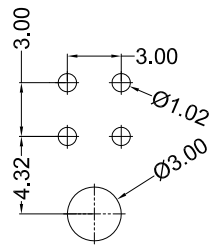


Poles	Dimensions (mm)	
	A	B
2*01	--	6.65
2*02	3.00	9.65
2*03	6.00	12.65
2*04	9.00	15.65
2*05	12.00	18.65
2*06	15.00	21.65
2*07	18.00	24.65
2*08	21.00	27.65
2*09	24.00	30.65
2*10	27.00	33.65
2*11	30.00	36.65
2*12	33.00	39.65

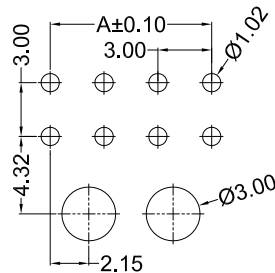
Scale 1:3



2P P.C.B LAYOUT



4P-6P P.C.B LAYOUT



8P-24P P.C.B LAYOUT

IPCW300W\*\* \* \* \* \* \*

- ① Series Type
- ② Pin code.
- ③ Material code.
- ④ Appearance code.
- ⑤ Internal code
- ⑥ Company code.
- ⑦ Other code.

TOLERANCE .X ±0.30 .XX ±0.20 .XXX ±0.10 UNLESS OTHERWISE SPECIFIED		<a href="http://www.i-ncp.com">www. i-ncp. com</a>	
	PART NO. IPCW300W-R	TITLE: Pitch 3.0mm wafer angle	
	DRAWING NO. IPCW300W-R		
	SHEET 1 OF 1	UNITS mm	SCALE 1:1 REV. 01

## X-ON Electronics

Largest Supplier of Electrical and Electronic Components

*Click to view similar products for [Headers & Wire Housings](#) category:*

*Click to view products by [INCP](#) manufacturer:*

Other Similar products are found below :

[57102-F02-18ULF](#) [58102-G61-06LF](#) [582553-1](#) [009176003701906](#) [01.001.5753.1](#) [0050291907](#) [02.125.8002.8](#) [609-3404](#) [61062-3](#)  
[CSU011177004](#) [622-0430](#) [622-3653LF](#) [63453-116](#) [636-1030](#) [636-1427](#) [636-3427](#) [636-4007](#) [641938-9](#) [644827-2](#) [65495-038](#) [65692-001LF](#)  
[65781-018](#) [65781-047](#) [65817-010LF](#) [65817-015LF](#) [66207-023LF](#) [67095-007LF](#) [67601157](#) [68631-112](#) [68645-018](#) [699319-000](#)  
[M90C108951C](#) [70.362.1628.0](#) [70-4210](#) [70-4226B](#) [70-4853B](#) [707-5028](#) [71.350.2428.0](#) [71961-016LF](#) [733-134](#) [733-162](#) [754199-000](#) [760-](#)  
[3052](#) [80.063.4001.1](#) [800-90-001-10-001000](#) [800-90-010-10-002000](#) [801-43-002-10-013000](#) [801-43-006-10-002000](#) [803-41-018-10-001000](#)  
[803-43-024-10-001000](#)