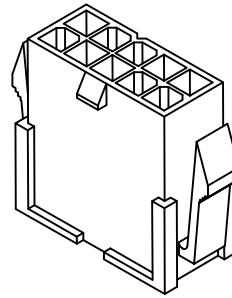
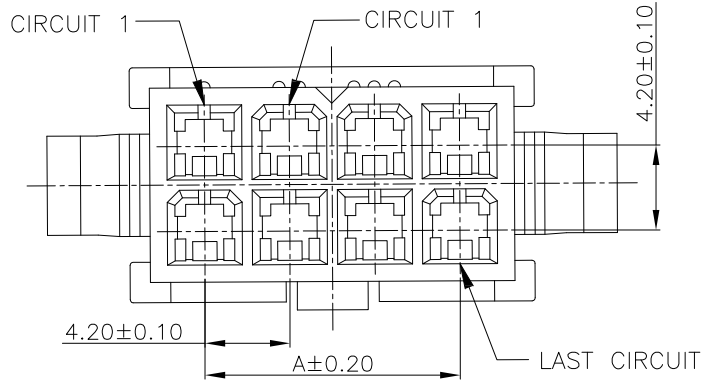


# Engineer Drawing

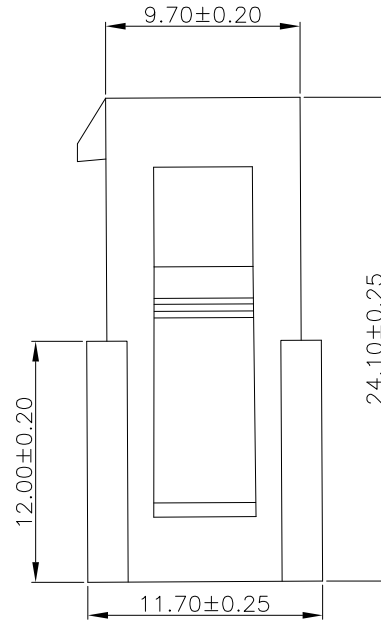
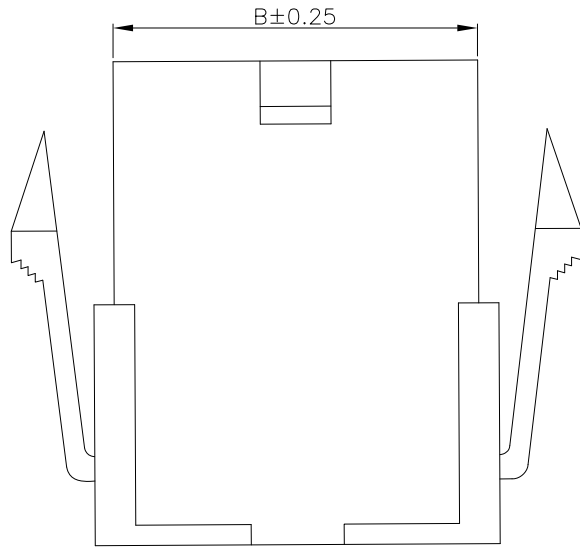
RoHS



3D view 0.5:1

**NOTE:**

- 1.MATERIAL SPECIFICATION:
  - 1-1.HOUSING: PA66
- 2.MECHANICAL PERFORMANCE:
  - 2-1.RETENTIVITY FORCE: 2.5KGF/pin min
  - 2-2.DURABILITY: 30 CYCLES.
- 3.ELECTRICAL PERFORMANCE:
  - 3-1.CURRENT RATING: 9A
  - RATED VOLTAGE : 600V AC/DC
  - 3-2.CONTACT RESISTANCE: 30 mΩ MAX
  - 3-3.INSULATION RESISTANCE: 1000MΩ Min
  - 3-4.DIELECTRIC WITHSTANDING : 1500V
- 4.ENVIRONMENTAL PERFORMANCE:
  - 4-1.OPERATING TEMPERATURE: -25°C~+85°C.
- 5.PACKAGE SPEC: PE BAG



IPCW420H	**	*	*	*	*	*
①	②	③	④	⑤	⑥	⑦
① Series Type	② Pin code.	③ Material code	④ Appereace code	⑤ Ineral code	⑥ Company code.	⑦ Other code.

<p><b>TOLERANCE</b></p> <p>.X ± 0.35 .XX ± 0.25 .XXX ± 0.0 <b>ANGLES</b> ±6°</p> <p>UNLESS OTHERWISE SPECIFIED</p>			<a href="http://www.i-ncp.com">www. i-ncp. com</a>		
	PART NO. IPCW420H xx		TITLE: Pitch 4.2mm Housing		
	DRAWING NO. IPCW420H06		Double row with ears		
SHEET 1 OF 1		UNITS mm	SCALE 1:1	REV. 01	

## X-ON Electronics

Largest Supplier of Electrical and Electronic Components

*Click to view similar products for [Headers & Wire Housings](#) category:*

*Click to view products by [INCP](#) manufacturer:*

Other Similar products are found below :

[0015917161](#) [0022155065](#) [57102-F02-18ULF](#) [58102-G61-06LF](#) [582553-1](#) [01.001.5753.1](#) [0050291907](#) [02.125.8002.8](#) [609-3404](#) [61062-3](#)  
[CSU011177004](#) [622-0430](#) [622-3653LF](#) [63453-116](#) [636-1030](#) [636-1427](#) [636-3427](#) [636-4007](#) [641938-9](#) [65495-038](#) [65692-001LF](#) [65781-018](#)  
[65781-047](#) [65817-010LF](#) [65817-015LF](#) [67095-007LF](#) [67601157](#) [68631-112](#) [68645-018](#) [699319-000](#) [70.362.1628.0](#) [70-4210](#) [70-4226B](#) [70-](#)  
[4853B](#) [71.350.2428.0](#) [733-134](#) [733-162](#) [760-3052](#) [MHR-64-VUAL](#) [80.063.4001.1](#) [800-90-001-10-001000](#) [801-43-002-10-013000](#)  
[801-43-006-10-002000](#) [803-43-024-10-001000](#) [803-93-012-10-001000](#) [8-1437020-4](#) [819-22-004-30-001101](#) [820-22-006-30-001101](#)  
[820-22-008-30-001101](#) [821-22-002-10-001101](#)