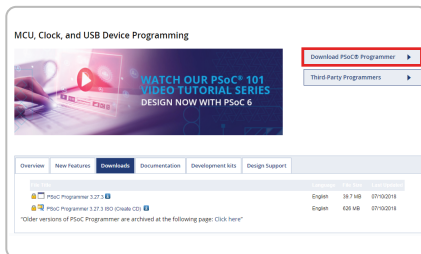
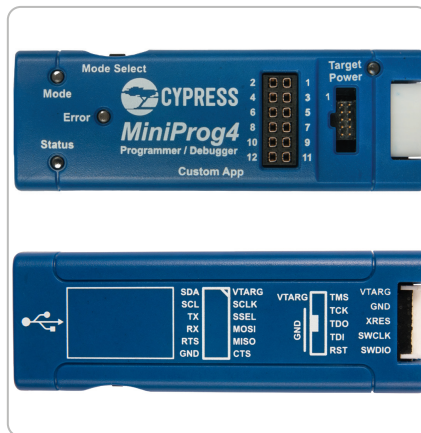


## CY8CKIT-005 MiniProg4 PROGRAM AND DEBUG KIT



### Install Software

- Download and install a programming tool<sup>1</sup>.  
[www.cypress.com/psocprogrammer](http://www.cypress.com/psocprogrammer)  
[www.cypress.com/cypressprogrammer](http://www.cypress.com/cypressprogrammer)



### Supported Devices

- MiniProg4 supports PSoC 4, PSoC 5LP, and PSoC 6 MCU devices<sup>2</sup>.

For more details on MiniProg4, refer to the Kit Guide available on:  
[www.cypress.com/CY8CKIT-005](http://www.cypress.com/CY8CKIT-005)

## CY8CKIT-005 MINIProg4 PROGRAM AND DEBUG KIT

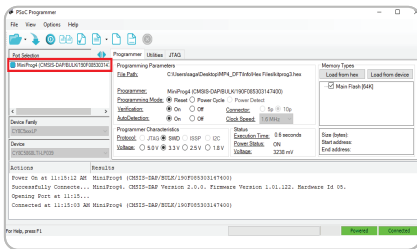
### MiniProg4 Setup

- Launch the programming tool you installed.
- Connect the MiniProg4 to the PC with the USB cable.
- Programmer detects the connected MiniProg4 and the Mode LED on the MiniProg4 turns on.

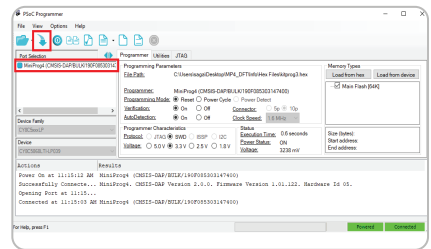
### Program a Device

- Load a .hex file.
- Set the programming settings.
- Connect the MiniProg4 to the target device.
- Click the Program button.

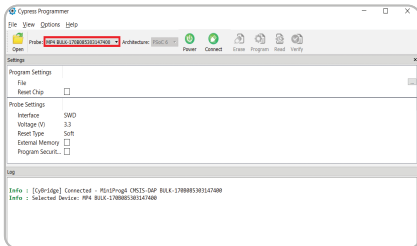
### PSoC Programmer



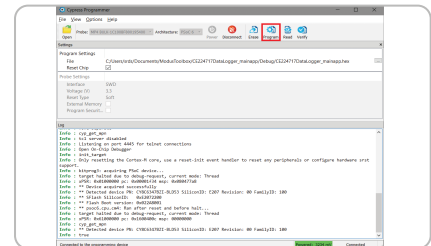
### PSoC Programmer



### Cypress Programmer



### Cypress Programmer



**Note 1:** PSoC Programmer is compatible with the Windows operating system. Cypress Programmer is compatible with Windows, macOS and Linux.

**Note 2:** Each programmer supports a subset of Cypress devices. See the respective tool documentation for which devices each supports.

For the latest information about this kit, visit [www.cypress.com/CY8CKIT-005](http://www.cypress.com/CY8CKIT-005)

## X-ON Electronics

Largest Supplier of Electrical and Electronic Components

*Click to view similar products for [Hardware Debuggers](#) category:*

*Click to view products by [Infineon](#) manufacturer:*

Other Similar products are found below :

[3571](#) [AC244028](#) [2209](#) [AC244036](#) [KITXMCLINKSEGGERV1TOBO1](#) [410-357-B](#) [8.08.91](#) [53506-1648](#) [410-357](#) [DB40](#) [LPC\\_DEBUG\\_2](#)  
[ATATMEL-ICE](#) [ATATMEL-ICE-BASIC](#) [CODEGRIP FOR ARM OVER USB-C](#) [CODEGRIP FOR PIC](#) [CODEGRIP FOR STM32 OVER](#)  
[USB-C](#) [CS-BLYST-08](#) [CS-CTXLINK-01](#) [410-251-B](#) [410-308](#) [410-308-B](#) [DLP-FLASH2](#) [ESP-PROG \(WITH LINES\)](#) [ALL-200](#) [IJET](#)  
[CY8CKIT-005-A](#) [IMOTIONLINK](#) [AC162051](#) [AC162059](#) [AC162060](#) [AC162062](#) [AC162064](#) [AC162066](#) [AC162074](#) [AC162079](#) [AC162087](#)  
[AC162088](#) [AC162096](#) [AC244006](#) [AC244024](#) [AC244027](#) [AC244034](#) [AC244035](#) [AC244048](#) [AC244053](#) [AC244054](#) [AC320202](#) [PG164100](#)  
[PG164140](#) [MIKROE-4511](#)