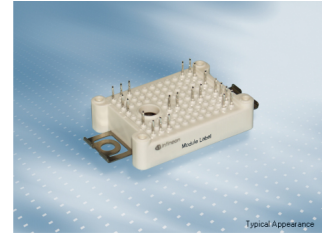


## EasyBRIDGE module with CoolSiC™ Schottky diode and PressFIT / NTC

### Features

- Electrical features
  - $V_{CES} = 1200\text{ V}$
  - $I_{C\text{ nom}} = 40\text{ A} / I_{CRM} = 80\text{ A}$
  - CoolSiC™ Schottky diode gen 5
  - High dynamic robustness
  - $T_{vj\text{ op}} = 150\text{ °C}$
- Mechanical features
  - Compact design
  - Rugged mounting due to integrated mounting clamps
  - PressFIT contact technology
  - Integrated NTC temperature sensor
  - $\text{Al}_2\text{O}_3$  substrate with low thermal resistance



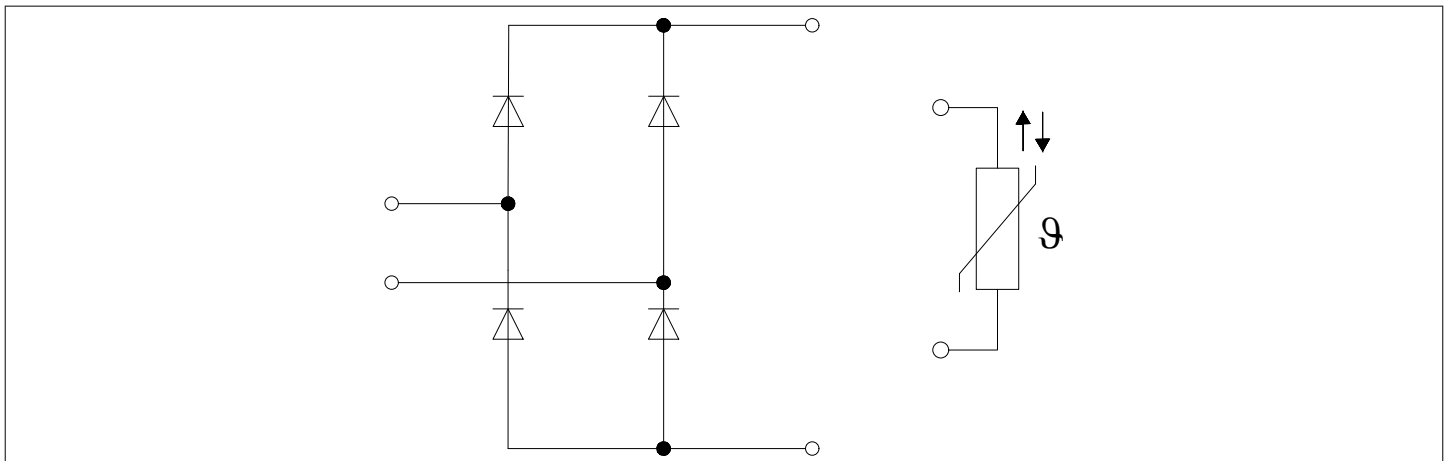
### Potential applications

- DC charger for EV

### Product validation

- Qualified for industrial applications according to the relevant tests of IEC 60747, 60749 and 60068

### Description



## Table of contents

	<b>Description</b> .....	1
	<b>Features</b> .....	1
	<b>Potential applications</b> .....	1
	<b>Product validation</b> .....	1
	<b>Table of contents</b> .....	2
<b>1</b>	<b>Package</b> .....	3
<b>2</b>	<b>Diode, Rectifier</b> .....	3
<b>3</b>	<b>NTC-Thermistor</b> .....	4
<b>4</b>	<b>Characteristics diagrams</b> .....	5
<b>5</b>	<b>Circuit diagram</b> .....	6
<b>6</b>	<b>Package outlines</b> .....	7
<b>7</b>	<b>Module label code</b> .....	8
	<b>Disclaimer</b> .....	9

## 1 Package

**Table 1 Insulation Coordination**

Parameter	Symbol	Note or test condition	Values	Unit
Isolation test voltage	$V_{ISOL}$	RMS, $f = 50$ Hz, $t = 1$ min	3.0	kV
Internal Isolation		basic insulation (class 1, IEC 61140)	$Al_2O_3$	
Creepage distance	$d_{Creep}$	terminal to heatsink	11.5	mm
Creepage distance	$d_{Creep}$	terminal to terminal	6.3	mm
Clearance	$d_{Clear}$	terminal to heatsink	10.0	mm
Clearance	$d_{Clear}$	terminal to terminal	5.0	mm
Comparative tracking index	$CTI$		> 200	
RTI Elec.	$RTI$	housing	140	°C

**Table 2 Characteristic Values**

Parameter	Symbol	Note or test condition	Values			Unit
			Min.	Typ.	Max.	
Stray inductance module	$L_{SCE}$			10		nH
Module lead resistance, terminals - chip	$R_{AA'+CC'}$	$T_H = 25^\circ C$ , per switch		1.9		mΩ
Storage temperature	$T_{stg}$		-40		125	°C
Mounting force per clamp	$F$		20		50	N
Weight	$G$			22		g

*Note:* The current under continuous operation is limited to 25 A rms per connector pin.  
 Designed for storage conditions according to Infineon TR14 (Application Note "Storage of Products Supplied by Infineon Technologies").  
 Designed for climate conditions without condensation or precipitation.

## 2 Diode, Rectifier

**Table 3 Maximum Rated Values**

Parameter	Symbol	Note or test condition	Values	Unit
Repetitive peak reverse voltage	$V_{RRM}$	$T_{vj} = 25^\circ C$	1200	V
Maximum RMS forward current per chip	$I_{FRMSM}$	$T_H = 55^\circ C$	40	A
Maximum RMS current at rectifier output	$I_{RMSM}$	$T_H = 55^\circ C$	55	A

**Table 3** Maximum Rated Values (continued)

Parameter	Symbol	Note or test condition	Values	Unit
Surge forward current	$I_{FSM}$	$t_p = 10 \text{ ms}$ $T_{vj} = 25 \text{ }^\circ\text{C}$	295	A
			$T_{vj} = 150 \text{ }^\circ\text{C}$	
$I^2t$ - value	$I^2t$	$t_p = 10 \text{ ms}$ $T_{vj} = 25 \text{ }^\circ\text{C}$	435	$\text{A}^2\text{s}$
			$T_{vj} = 150 \text{ }^\circ\text{C}$	

**Table 4** Characteristic Values

Parameter	Symbol	Note or test condition	Values			Unit
			Min.	Typ.	Max.	
Forward voltage	$V_F$	$I_F = 40 \text{ A}$ $T_{vj} = 150 \text{ }^\circ\text{C}$		1.85		V
Reverse current	$I_r$	$T_{vj} = 150 \text{ }^\circ\text{C}$ , $V_R = 1200 \text{ V}$		0.116		mA
Thermal resistance, junction to heatsink	$R_{thJH}$	per diode		0.960		K/W
Temperature under switching conditions	$T_{vj, op}$		-40		150	$^\circ\text{C}$

### 3 NTC-Thermistor

**Table 5** Characteristic Values

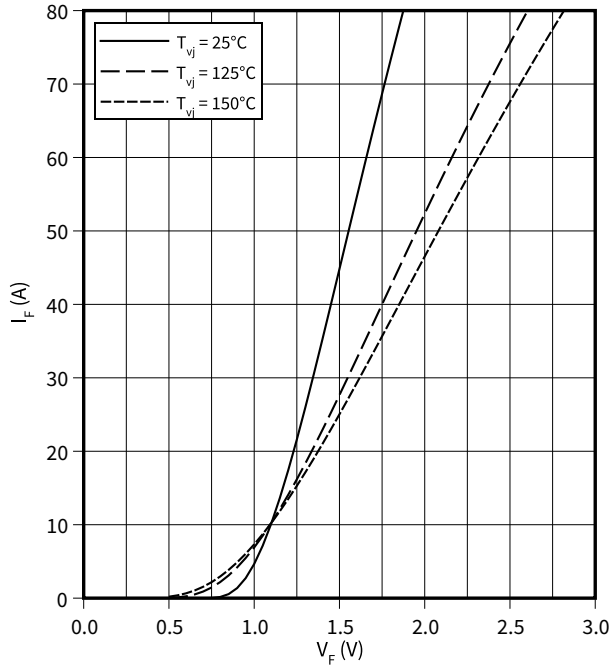
Parameter	Symbol	Note or test condition	Values			Unit
			Min.	Typ.	Max.	
Rated resistance	$R_{25}$	$T_{NTC} = 25 \text{ }^\circ\text{C}$		5		k $\Omega$
Deviation of $R_{100}$	$\Delta R/R$	$T_{NTC} = 100 \text{ }^\circ\text{C}$ , $R_{100} = 493 \text{ } \Omega$	-5		5	%
Power dissipation	$P_{25}$	$T_{NTC} = 25 \text{ }^\circ\text{C}$			20	mW
B-value	$B_{25/50}$	$R_2 = R_{25} \exp[B_{25/50}(1/T_2 - 1/(298,15 \text{ K}))]$		3375		K
B-value	$B_{25/80}$	$R_2 = R_{25} \exp[B_{25/80}(1/T_2 - 1/(298,15 \text{ K}))]$		3411		K
B-value	$B_{25/100}$	$R_2 = R_{25} \exp[B_{25/100}(1/T_2 - 1/(298,15 \text{ K}))]$		3433		K

Note: Specification according to the valid application note.

## 4 Characteristics diagrams

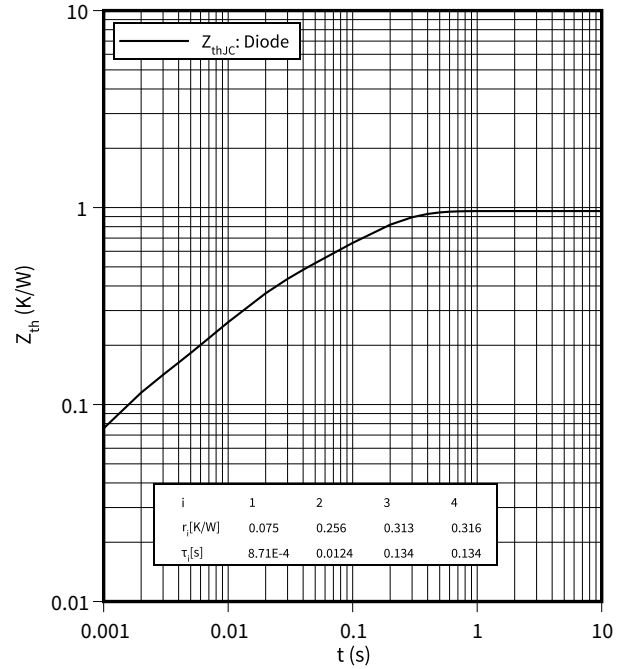
**forward characteristic (typical), Diode, Rectifier**

$$I_F = f(V_F)$$



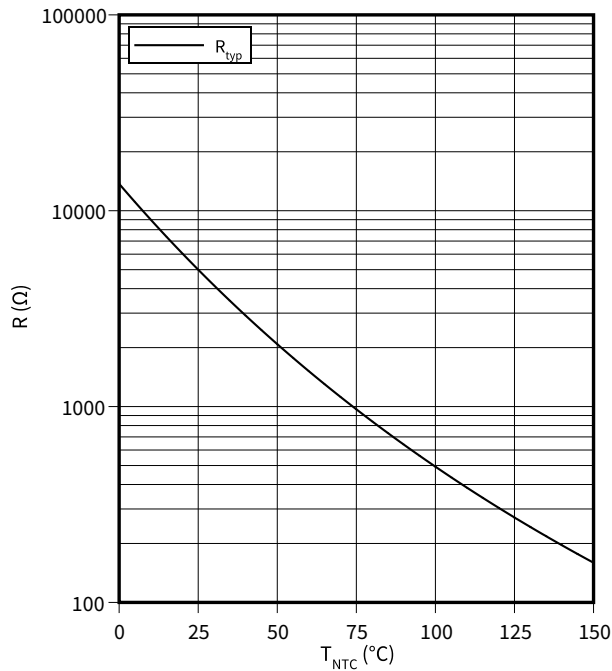
**transient thermal impedance, Diode, Rectifier**

$$Z_{th} = f(t)$$



**temperature characteristic (typical), NTC-Thermistor**

$$R = f(T_{NTC})$$



## 5 Circuit diagram

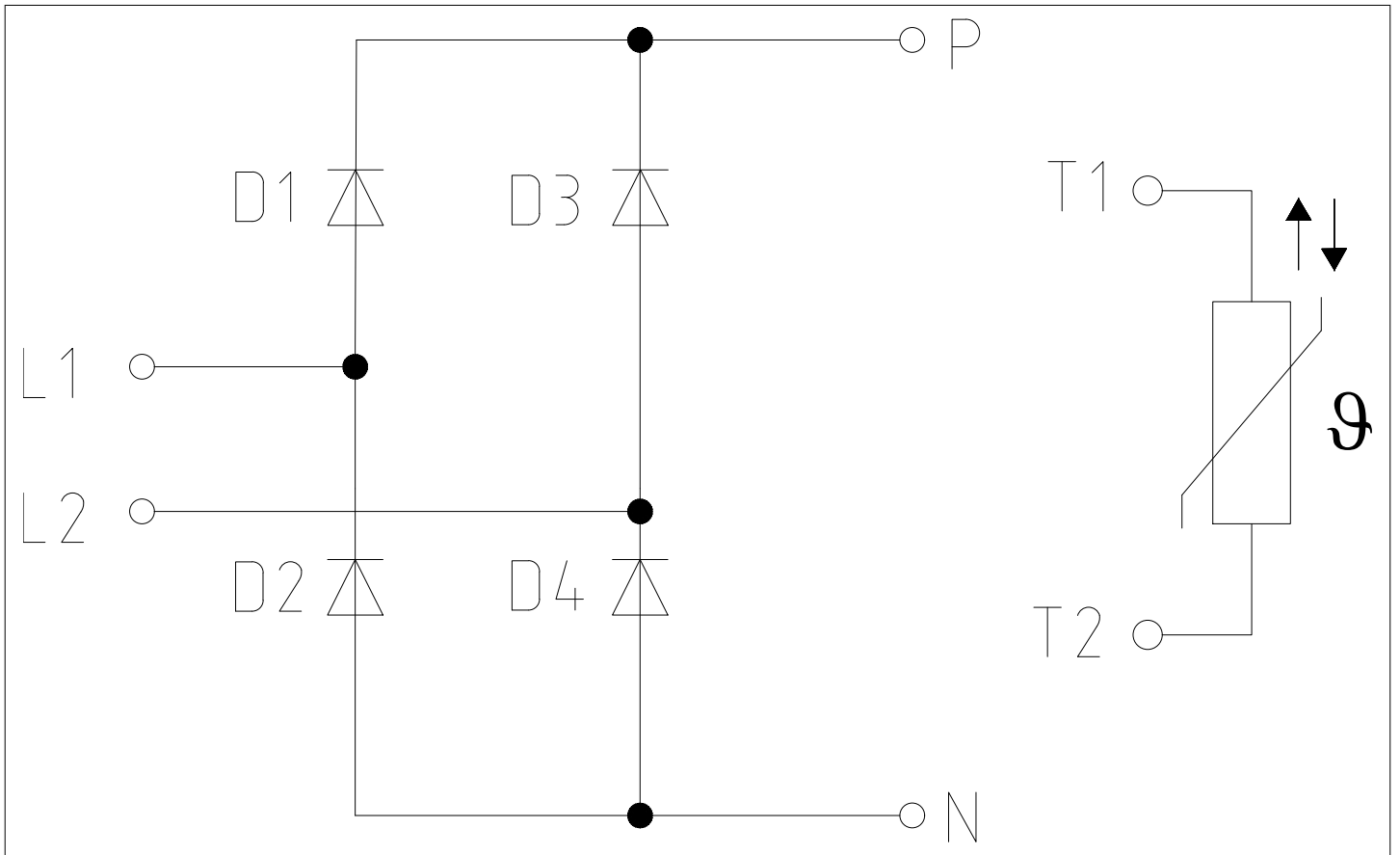
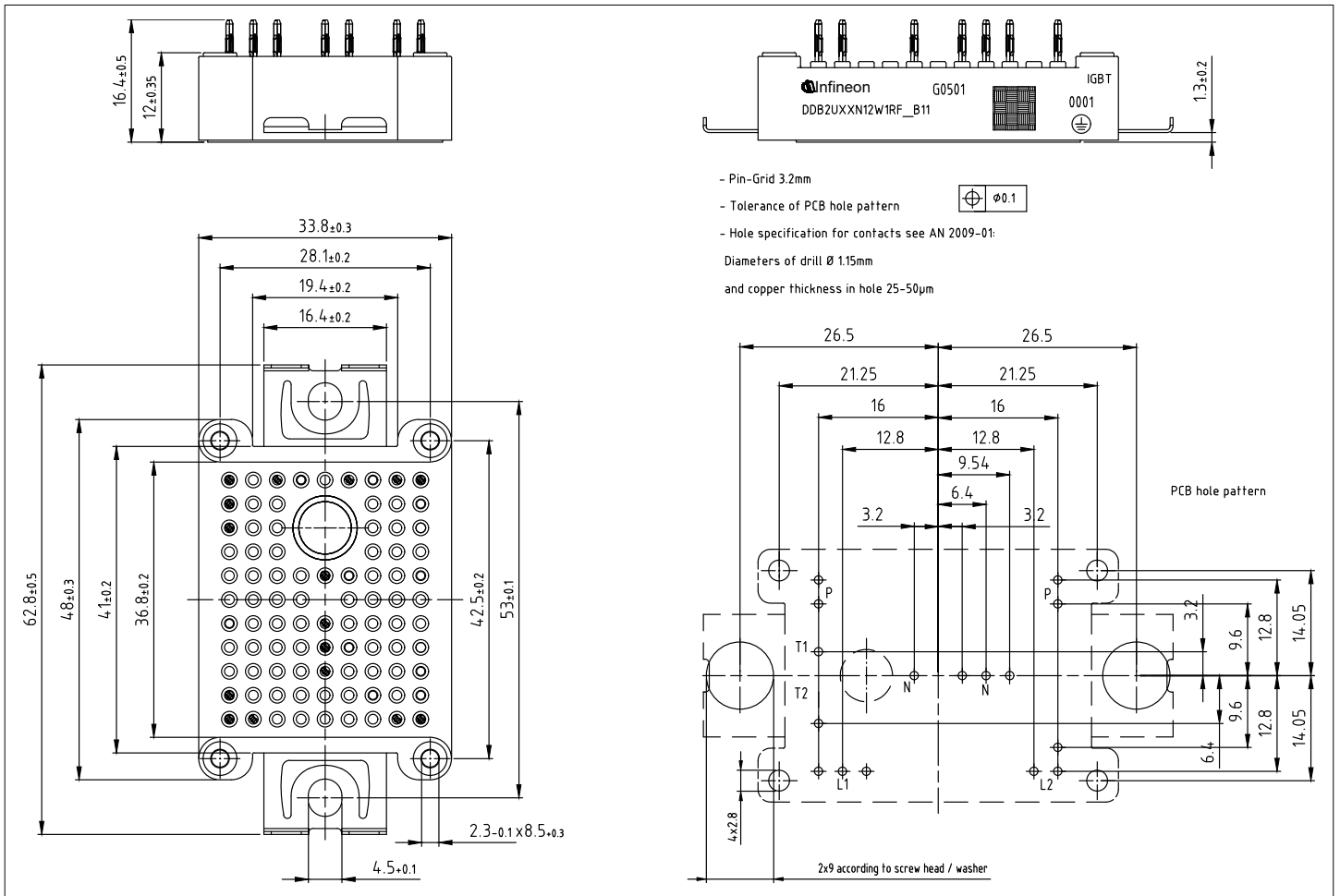


Figure 2



6 Package outlines

**6 Package outlines**



**Figure 3**

## 7 Module label code

Module label code			
Code format	Data Matrix	Barcode Code128	
Encoding	ASCII text	Code Set A	
Symbol size	16x16	23 digits	
Standard	IEC24720 and IEC16022	IEC8859-1	
Code content	Content	Digit	Example
	Module serial number	1 - 5	71549
	Module material number	6 - 11	142846
	Production order number	12 - 19	55054991
	Date code (production year)	20 - 21	15
	Date code (production week)	22 - 23	30
Example	 		
	71549142846550549911530		71549142846550549911530

**Figure 4**



## Trademarks

All referenced product or service names and trademarks are the property of their respective owners.

**Edition 2021-02-10**

**Published by**

**Infineon Technologies AG**

**81726 Munich, Germany**

**© 2021 Infineon Technologies AG**

**All Rights Reserved.**

**Do you have a question about any aspect of this document?**

**Email: [erratum@infineon.com](mailto:erratum@infineon.com)**

**Document reference**

**IFX-**

## IMPORTANT NOTICE

The information given in this document shall in no event be regarded as a guarantee of conditions or characteristics ("Beschaffheitsgarantie").

With respect to any examples, hints or any typical values stated herein and/or any information regarding the application of the product, Infineon Technologies hereby disclaims any and all warranties and liabilities of any kind, including without limitation warranties of non-infringement of intellectual property rights of any third party.

In addition, any information given in this document is subject to customer's compliance with its obligations stated in this document and any applicable legal requirements, norms and standards concerning customer's products and any use of the product of Infineon Technologies in customer's applications.

The data contained in this document is exclusively intended for technically trained staff. It is the responsibility of customer's technical departments to evaluate the suitability of the product for the intended application and the completeness of the product information given in this document with respect to such application.

Please note that this product is not qualified according to the AEC Q100 or AEC Q101 documents of the Automotive Electronics Council.

## WARNINGS

Due to technical requirements products may contain dangerous substances. For information on the types in question please contact your nearest Infineon Technologies office.

Except as otherwise explicitly approved by Infineon Technologies in a written document signed by authorized representatives of Infineon Technologies, Infineon Technologies' products may not be used in any applications where a failure of the product or any consequences of the use thereof can reasonably be expected to result in personal injury.

## X-ON Electronics

Largest Supplier of Electrical and Electronic Components

*Click to view similar products for [Discrete Semiconductor Modules](#) category:*

*Click to view products by [Infineon](#) manufacturer:*

Other Similar products are found below :

[M252511FV](#) [DD89N1600K-A](#) [DR7306](#) [B522F-2-YEC](#) [25.163.0653.1](#) [25.163.2453.0](#) [25.163.4253.0](#) [25.190.2053.0](#) [25.194.3453.0](#)  
[25.320.4853.1](#) [25.320.5253.1](#) [25.326.3253.1](#) [25.326.3553.1](#) [25.330.1653.1](#) [25.330.4753.1](#) [25.330.5253.1](#) [25.334.3253.1](#) [25.334.3353.1](#)  
[25.350.2053.0](#) [25.352.4753.1](#) [25.522.3253.0](#) [T2180N18TOF](#) [VT](#) [T484C](#) [T485F](#) [T485H](#) [T512F-YEB](#) [T514F](#) [T554](#) [25.161.3453.0](#)  
[25.179.2253.0](#) [25.194.3253.0](#) [25.325.1253.1](#) [25.326.4253.1](#) [25.330.0953.1](#) [25.332.4353.1](#) [25.350.1653.0](#) [25.350.2453.0](#) [25.352.1453.0](#)  
[25.352.1653.0](#) [25.352.2453.0](#) [25.352.5453.1](#) [25.522.3353.0](#) [25.640.5053.0](#) [M252532V](#) [M2550TB400](#) [M471B5673EH1-CH900](#) [M505012F-](#)  
[YEC](#) [TT215N22KOF](#) [TT251N16KOF](#) [V100-35.200N](#)